



Universal Routing 7.6

Routing Application Configuration Guide

The information contained herein is proprietary and confidential and cannot be disclosed or duplicated without the prior written consent of Genesys Telecommunications Laboratories, Inc.

Copyright © 2007–2008 Genesys Telecommunications Laboratories, Inc. All rights reserved.

About Genesys

Genesys Telecommunications Laboratories, Inc., a subsidiary of Alcatel-Lucent, is 100% focused on software for call centers. Genesys recognizes that better interactions drive better business and build company reputations. Customer service solutions from Genesys deliver on this promise for Global 2000 enterprises, government organizations, and telecommunications service providers across 80 countries, directing more than 100 million customer interactions every day. Sophisticated routing and reporting across voice, e-mail, and Web channels ensure that customers are quickly connected to the best available resource—the first time. Genesys offers solutions for customer service, help desks, order desks, collections, outbound telesales and service, and workforce management. Visit www.genesyslab.com for more information.

Each product has its own documentation for online viewing at the Genesys Technical Support website or on the Documentation Library DVD, which is available from Genesys upon request. For more information, contact your sales representative.

Notice

Although reasonable effort is made to ensure that the information in this document is complete and accurate at the time of release, Genesys Telecommunications Laboratories, Inc., cannot assume responsibility for any existing errors. Changes and/or corrections to the information contained in this document may be incorporated in future versions.

Your Responsibility for Your System's Security

You are responsible for the security of your system. Product administration to prevent unauthorized use is your responsibility. Your system administrator should read all documents provided with this product to fully understand the features available that reduce your risk of incurring charges for unlicensed use of Genesys products.

Trademarks

Genesys, the Genesys logo, and T-Server are registered trademarks of Genesys Telecommunications Laboratories, Inc. All other trademarks and trade names referred to in this document are the property of other companies. The Crystal monospace font is used by permission of Software Renovation Corporation, www.SoftwareRenovation.com.

Technical Support from VARs

If you have purchased support from a value-added reseller (VAR), please contact the VAR for technical support.

Technical Support from Genesys

If you have purchased support directly from Genesys, please contact Genesys Technical Support at the following regional numbers:

Region	Telephone	E-Mail
North and Latin America	+888-369-5555 or +506-674-6767	support@genesyslab.com
Europe, Middle East, and Africa	+44-(0)-1276-45-7002	support@genesyslab.co.uk
Asia Pacific	+61-7-3368-6868	support@genesyslab.com.au
Japan	+81-3-6361-8950	support@genesyslab.co.jp

Prior to contacting technical support, please refer to the [Genesys Technical Support Guide](#) for complete contact information and procedures.

Ordering and Licensing Information

Complete information on ordering and licensing Genesys products can be found in the [Genesys 7 Licensing Guide](#).

Released by

Genesys Telecommunications Laboratories, Inc. www.genesyslab.com

Document Version: 76r_cg-ra_09-2008_v7.6.101.00



Table of Contents

Preface	7
Customer Interaction Management	7
Multimedia	8
Intended Audience.....	8
Chapter Summaries.....	8
Document Conventions	9
Related Resources	11
Making Comments on This Document	13
 Chapter 1	 Overview..... 15
Routing Defined.....	16
Routing Strategies	16
Selecting the “Right” Target.....	17
Configuration Elements	18
User Interfaces	18
Functions	20
Options	20
Data Storage	21
Universal Routing Functionality	22
 Chapter 2	 Skills-Based Routing..... 25
About Skills-Based Routing	25
Use Case	26
Virtual Agent Groups	26
Configuration Manager Preparation	27
Assigning Skills to Agents	28
Example Skills-Based Routing Strategy	29
Scenario.....	29
Interaction Data	29
Strategy in Design View	30
Routing Based On a Skill Expression.....	35
Functions for Skills-Based Routing.....	36
IRD Objects for Skills-Based Routing.....	37

Chapter 3	Business-Priority Routing	39
	Use Cases	39
	Available Selection Criteria.....	40
	Selecting the Highest Priority Interaction.....	40
	Selecting the Interaction with Longest Current Wait Time	41
	Selecting an Interaction with the Oldest Age	42
	Selecting Based On “What-If” Wait Time	43
	Selecting Based On Highest Risk Factor of Service Objective.....	44
	Types of Risk Factors	45
	Support for Multimedia Interactions.....	46
	Implementation for Multimedia Interactions	46
	Recommended Settings	52
Chapter 4	Cost-Based Routing	59
	Infrastructure Versus Resource Cost.....	60
	Infrastructure Cost	60
	Resource Cost	60
	Non-Configured DNS	61
	Interaction Types	61
	Interaction Type Contracts	62
	Cost as an Agent Property	63
	Specifying Agent Cost in the Annex Tab.....	63
	Cost-Based Routing Reporting.....	64
	CBR Information Attached to Interactions.....	64
	Reporting Data Flow	64
	Special Note on Interaction Attached Data	65
	Features and Benefits of CBR.....	66
	Limitations	67
Chapter 5	Share Agent By Service Level Agreement Routing	69
	Benefits and Features	70
	Problem Addressed By Solution.....	71
	Goal of Solution	71
	Use Case.....	72
	Borrowing Triggering Conditions.....	72
	Lending Triggering Conditions	72
	Implementing SLA Routing.....	73
	Method #1: Target Selection Object.....	73
	Method #2: Function SetTargetThreshold.....	78
	Example Strategy.....	78
	List Objects in SLA Routing.....	83

	Sample Subroutine and List Object	86
	Trigger Conditions Supported	93
	Multi-Tiered Design.....	94
	Limitations	95
Chapter 6	Proactive Routing.....	97
	What Is a Proactive Routing Solution?	97
	Proactive Routing Strategies	98
	Component Products	98
	Business Use Cases	99
	Use Case #1: Multi-lingual Outbound Campaign.....	99
	Use Case #2: Callback Routing.....	100
	Use Case #3: Last minute Pre-Dial Check	101
	Use Case #4: Training Campaign.....	101
	Use Case #5: Automated follow-up list development	101
	Use Case #6: Simple Outbound E-mail Campaigns	102
Chapter 7	SIP/Instant Messaging Solution	103
	Universal Routing SIP Support.....	103
	Genesys Instant Messaging Solution	104
Index	105



Preface

Welcome to *Universal Routing 7.6 Routing Application Configuration Guide*. This guide contains information on some of the types of routing that can be implemented with Genesys Universal Routing. In brief, you will find information about: the following types of routing: skills-based, business priority, cost-based, share agent by service level agreement, and proactive routing. It also summarizes Universal Routing support for a Genesys Instant Messaging Solution.

This guide is valid only for the 7.6 release of this product.

Note: This guide was previously called *Universal Routing 7.6 Routing Solutions Guide*.

This preface provides an overview of this document, identifies the primary audience, introduces document conventions, and lists related reference information:

- [Customer Interaction Management, page 7](#)
- [Intended Audience, page 8](#)
- [Chapter Summaries, page 8](#)
- [Document Conventions, page 9](#)
- [Related Resources, page 11](#)
- [Making Comments on This Document, page 13](#)

Customer Interaction Management

Universal Routing enables you to design sophisticated strategies for handling both voice and non-voice interactions and for directing them to an appropriate target. Universal Routing also provides data required to report on interaction handling in your enterprise.

Universal Routing, which comprises Enterprise Routing and Network Routing, is one part of the Genesys Customer Interaction Management (CIM) Platform.

The CIM Platform consists of the following:

- Genesys Universal Routing

- Genesys Reporting (CC Analyzer, CCPulse+)
- Genesys Multimedia
- Genesys Management Framework

Each has its own documentation set.

Multimedia

Genesys Multimedia is the core of a series of components that work together to handle interactions from disparate media-based devices. It allows you to centralize your handling of the various channels that customers use to reach your contact center. The core functionality provided by Multimedia must operate with at least one of the following media channels:

- Genesys E-mail. This channel has an optional enhancement: Genesys Content Analyzer, which uses natural language technology to provide automated classification of incoming e-mail.
- Genesys Web Media (chat).
- Genesys Open Media, which allows you to add customized support for other media. For more information see the documents for the Genesys Developer Program 7.6, particularly those dealing with the Media Interaction SDK.

Note: Universal Routing 7.6 can work in a pure voice environment or with the Multimedia software components, which allow for the additional routing of non-voice interactions based on IRD-designed business processes.

Intended Audience

This guide is primarily intended for users involved in developing and setting up a routing solution, including administrators and strategy designers. This guide assumes that you have a basic understanding of:

- Computer-telephony integration concepts, processes, terminology, and applications.
- Network design and operation.
- Familiarity with your own network configurations.

You should also be familiar with Framework architecture and functions.

Chapter Summaries

In addition to this preface, this guide contains the following chapters:

- Chapter 1, “Overview,” on [page 15](#), gives a brief introduction to the process of routing, summaries different types routing solutions and associated elements, and lists Universal Routing 7.6 functionality.
- Chapter 2, “Skills-Based Routing,” on [page 25](#), provides information on developing and creating strategies that route interactions to the most appropriately skilled agent.
- Chapter 3, “Business-Priority Routing,” on [page 39](#), describes fine-tuning the criteria used by Universal Routing Server when selecting interactions from queues.
- Chapter 4, “Cost-Based Routing,” on [page 59](#), presents a high level overview of a type of routing that causes URS to consider cost as an additional selection criteria when routing to targets.
- Chapter 5, “Share Agent By Service Level Agreement Routing,” on [page 69](#), describes a type of routing where you define the triggering conditions (borrowing and lending) for sharing agents among different business lines.
- Chapter 6, “Proactive Routing,” on [page 97](#), describes a type of routing that allows you to proactively route preview interactions to the Agent Desktop and completely process Calling List and Do Not Call List records solely from the logic of a routing strategy.
- Chapter 7, “SIP/Instant Messaging Solution,” on [page 103](#), describes Universal Routing support of a Genesys Instant Messaging solution.

Document Conventions

This document uses certain stylistic and typographical conventions—introduced here—that serve as shorthands for particular kinds of information.

Document Version Number

A version number appears at the bottom of the inside front cover of this document. Version numbers change as new information is added to this document. Here is a sample version number:

76r_sol_11-2006_v7.6.000.03

You will need this number when you are talking with Genesys Technical Support about routing solution that can be implemented with Universal Routing 7.6.

Type Styles

Italic

In this document, italic is used for emphasis, for documents' titles, for definitions of (or first references to) unfamiliar terms, and for mathematical variables.

- Examples:**
- Please consult the *Genesys 7 Migration Guide* for more information.
 - *A customary and usual practice* is one that is widely accepted and used within a particular industry or profession.
 - Do *not* use this value for this option.
 - The formula, $x + 1 = 7$ where x stands for . . .

Monospace Font

A monospace font, which looks like teletype or typewriter text, is used for all programming identifiers and GUI elements.

This convention includes the *names* of directories, files, folders, configuration objects, paths, scripts, dialog boxes, options, fields, text and list boxes, operational modes, all buttons (including radio buttons), check boxes, commands, tabs, CTI events, and error messages; the values of options; logical arguments and command syntax; and code samples.

- Examples:**
- Select the Show variables on screen check box.
 - Click the Summation button.
 - In the Properties dialog box, enter the value for the host server in your environment.
 - In the Operand text box, enter your formula.
 - Click OK to exit the Properties dialog box.
 - The following table presents the complete set of error messages T-Server distributes in EventError events.
 - If you select true for the inbound-bsns-calls option, all established inbound calls on a local agent are considered business calls.

Monospace is also used for any text that users must manually enter during a configuration or installation procedure, or on a command line:

- Example:**
- Enter exit on the command line.

Screen Captures Used in This Document

Screen captures from the product GUI (graphical user interface), as used in this document, may sometimes contain a minor spelling, capitalization, or grammatical error. The text accompanying and explaining the screen captures corrects such errors *except* when such a correction would prevent you from

installing, configuring, or successfully using the product. For example, if the name of an option contains a usage error, the name would be presented exactly as it appears in the product GUI; the error would not be corrected in any accompanying text.

Square Brackets

Square brackets indicate that a particular parameter or value is optional within a logical argument, a command, or some programming syntax. That is, the parameter's or value's presence is not required to resolve the argument, command, or block of code. The user decides whether to include this optional information. Here is a sample:

```
smcp_server -host [/flags]
```

Angle Brackets

Angle brackets indicate a placeholder for a value that the user must specify. This might be a DN or port number specific to your enterprise. Here is a sample:

```
smcp_server -host <confighost>
```

Related Resources

Consult these additional resources as necessary:

- *Universal Routing 7.6 Deployment Guide*. The first part of the guide provides information you will need to get started: A high-level overview of Universal Routing features and functions, including product architecture, system availability, redundancy information and deployment-planning. The second part of the guide provides instructions for deploying Universal Routing components, and describes how to start and stop these components once you have configured and installed them.
- *Universal Routing 7.6 Reference Manual*, which describes and defines routing strategies, IRD objects that can be used in routing strategies, Universal Routing Server functions that can be used in routing strategies, Universal Routing Server options and other options that affect routing, number translation, pegs, statistics used for routing, and log events.
- *Universal Routing Business 7.6 Process User's Guide*. This guide contains step-by-step instructions for creating interaction workflows (*business processes*), which direct incoming customer interactions through various processing objects. The goal is to generate an appropriate response for the customer.

- *Universal Routing 7.6 Cost-Based Routing Configuration Guide*, which documents a solution where Universal Routing Server considers the cost of routing to a target, comprised of Infrastructure cost and/or Resource cost, as additional selection criteria when choosing the right target.
- *Universal Routing 7.6 Strategy Samples*, which simplifies strategy configuration for first-time users of the strategy development tool, Interaction Routing Designer. To achieve this goal, this document supplies examples of simple voice and e-mail routing strategies that can be used as general guides during the design stage.
- *Universal Routing 7.6 Interaction Routing Designer Help*, which describes how to use Interaction Routing Designer to create routing strategies. It also describes Interaction Workflow view where you create business processes that route incoming interactions through various processing objects with the goal of generating an appropriate response for the customer.
- *Genesys 7.6 Instant Messaging Solution Guide*, which consolidates instant messaging configuration into one guide. It includes information on using SIP Server, designing a strategy to route instant messaging interactions, and enabling DNs to handle instant messages.
- *Genesys 7 Events and Models Reference Manual*, which provides information on most of the published Genesys events and their attributes, and an extensive collection of models describing core interaction processing in Genesys environments.
- *Genesys 7.6 Resource Capacity Planning Guide* (the last published version of the guide), which provides instructions on using the Genesys Agent Capacity Wizard to set up agent capacity rules, which affect the routing of interactions to agents.
- *Framework 7.6 Stat Server User's Guide*, which introduces you to the concepts, terminology, and procedures relevant to Genesys Stat Server.
- *Framework 7.6 Combined Log Events Help*, which provides details about error and informational messages generated by server components, including Universal Routing Server.
- *Reporting Technical Reference Guide for the Genesys 7.2 Release*, which describes the statistics the CC Analyzer and CCPulse+ applications gather about overall contact center performance and the reporting templates and reporting layouts you can use to present that data.
- *Genesys 7 Interoperability Guide*, which identifies which Genesys components can successfully work together, and which versions are not compatible.
- *Genesys 7 Hardware Sizing Guide*, which provides hardware and CPU guidelines for Genesys products.
- The *Genesys Technical Publications Glossary*, which ships on the Genesys Documentation Library DVD and which provides a comprehensive list of the Genesys and CTI terminology and acronyms used in this document.

- The *Genesys 7 Migration Guide*, also on the Genesys Documentation Library DVD, which provides a documented migration strategy from Genesys product releases 5.1 and later to all Genesys 7.x releases. Contact Genesys Technical Support for additional information.
- The Release Notes and Product Advisories for this product, which are available on the Genesys Technical Support website at <http://genesyslab.com/support>.

Information on supported hardware and third-party software is available on the Genesys Technical Support website in the following documents:

- *Genesys 7 Supported Operating Systems and Databases*
- *Genesys 7 Supported Media Interfaces*

Genesys product documentation is available on the:

- Genesys Technical Support website at <http://genesyslab.com/support>.
- Genesys Documentation Library DVD, which you can order by e-mail from Genesys Order Management at orderman@genesyslab.com.

Making Comments on This Document

If you especially like or dislike anything about this document, please feel free to e-mail your comments to Techpubs.webadmin@genesyslab.com.

You can comment on what you regard as specific errors or omissions, and on the accuracy, organization, subject matter, or completeness of this document. Please limit your comments to the information in this document only and to the way in which the information is presented. Speak to Genesys Technical Support if you have suggestions about the product itself.

When you send us comments, you grant Genesys a nonexclusive right to use or distribute your comments in any way it believes appropriate, without incurring any obligation to you.



Chapter

1

Overview

This guide familiarizes you with the following types of routing:

1. “Skills-Based Routing” on [page 25](#)
2. “Business-Priority Routing” on [page 39](#)
3. “Cost-Based Routing” on [page 59](#)
4. “Share Agent By Service Level Agreement Routing” on [page 69](#)
5. “Proactive Routing” on [page 97](#)

In addition, this guide summarizes a Genesys SIP/Instant Messaging solution on [page 103](#).

Note: Universal Routing 7.6 is not limited to the types of routing presented in this document. For information on all Universal Routing capabilities, see the overview in the *Universal Routing 7.6 Deployment Guide*.

This chapter presents a high level overview of routing for new users. It contains the following topics:

- [Routing Defined, page 16](#)
- [Routing Strategies, page 16](#)
- [Selecting the “Right” Target, page 17](#)
- [Configuration Elements, page 18](#)
- [Universal Routing Functionality, page 22](#)

Routing Defined

In the context of Genesys Universal Routing, *routing* is the process of sending an interaction to a target; for example, sending an incoming telephone call or an incoming e-mail to an agent.

In practice, many steps must be taken between the arrival of an interaction and the selection and use of a target. Not all interactions should go to the same target; choices must be made in order to determine the best target for each interaction. Each *choice-point* is an opportunity to make a decision based on the current situation—with the goal of getting the interaction delivered to the right target.

Routing Strategies

You specify choice-points by creating *routing strategies*, which are an integral part of the solutions covered in this guide. [Figure 1](#) shows an example routing strategy where the first choice point (Day of Week Segmentation object) segments incoming interactions to take different paths in the strategy.

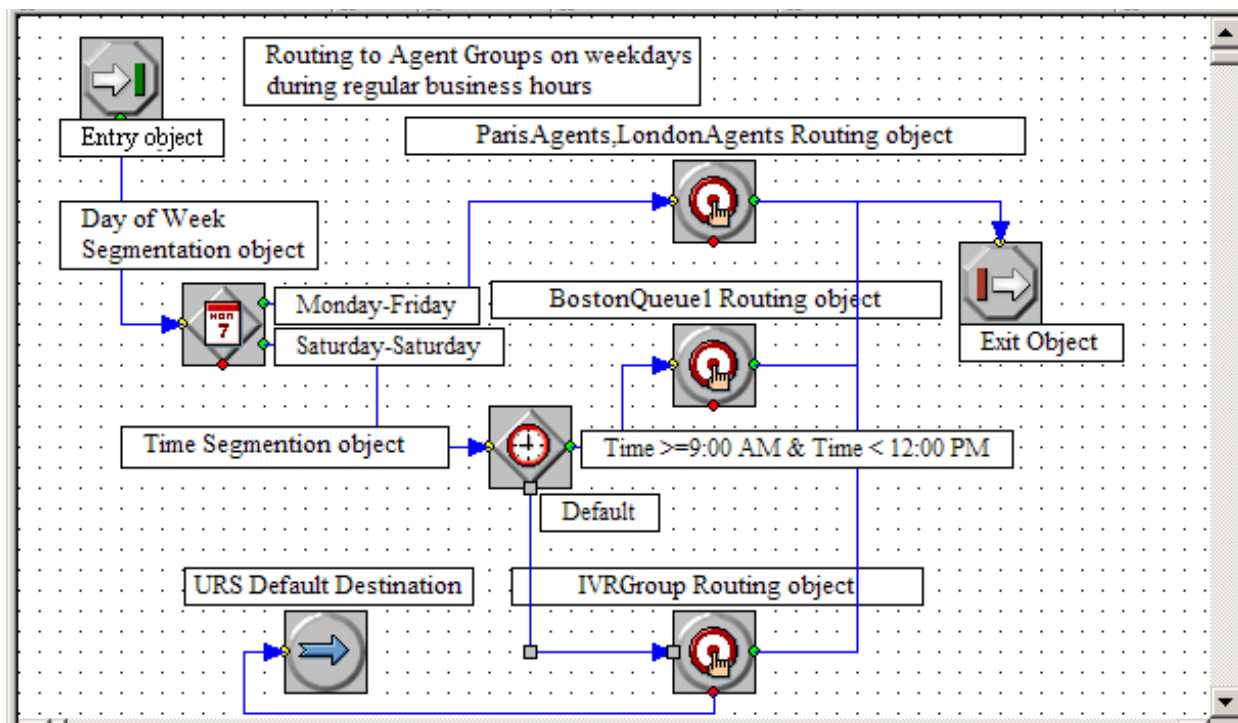


Figure 1: Sample Routing Strategy

Note: For cost-based routing or share agent by service level agreement solutions, Universal Routing supplies sample routing strategies that you can use as guides when creating your own strategies. Genesys also supplies sample strategies through its Interaction Workflow Samples component.

When creating routing strategies, you work in a graphical user interface (GUI) application called Interaction Routing Designer (IRD).

- IRD enables you to create, test, modify, and load routing strategies on routing points.
- Universal Routing Server (URS or “Router”) executes the routing strategy instructions.

For more information on IRD and Universal Routing Server, start with the *Universal Routing 7.6 Deployment Guide*. For step-by-step instructions on using IRD to create strategies, see the *Universal Routing 7.6 Interaction Routing Designer Help* or the *Universal Routing 7.5 Business Process User’s Guide*.

Selecting the “Right” Target

You configure a routing strategy to solve the problem of getting a customer interaction to the right target in the shortest amount of time. The “right target” depends on the type of routing solution you choose to implement.

- In some cases, the right target can be an available agent with the skills that most closely match the customer’s needs.
- In other cases, the right target may be the least expensive agent based on contract cost, contact center infrastructure cost, or both.
- In still other cases, the right target can be the most appropriately skilled agent borrowed from another business unit because all agents serving the called business line are busy.
- Again, the right target depends on the type of routing solution you choose to implement.
- A business priority routing solution enables you to fine-tune the criteria used by Universal Routing Server when selecting interactions from queues. Business priority routing selection criteria can include:

Highest priority interaction

Longest current wait time

Interaction with oldest age

“What-if” wait time

Highest risk factor in service objective based on current wait time

Highest risk factor in service objective based on age of interaction

Highest risk factor in service objective based on predicted wait time

Configuration Elements

To configure the various types of routing discussed in this guide, Genesys supplies following elements:

- “User Interfaces” on [page 18](#)
- “Functions” on [page 20](#)
- “Options” on [page 20](#)
- “Functions” on [page 20](#)

The pages ahead discuss each element.

User Interfaces

You create routing strategies in the Routing Design window of Interaction Routing Designer (see [Figure 2](#)).

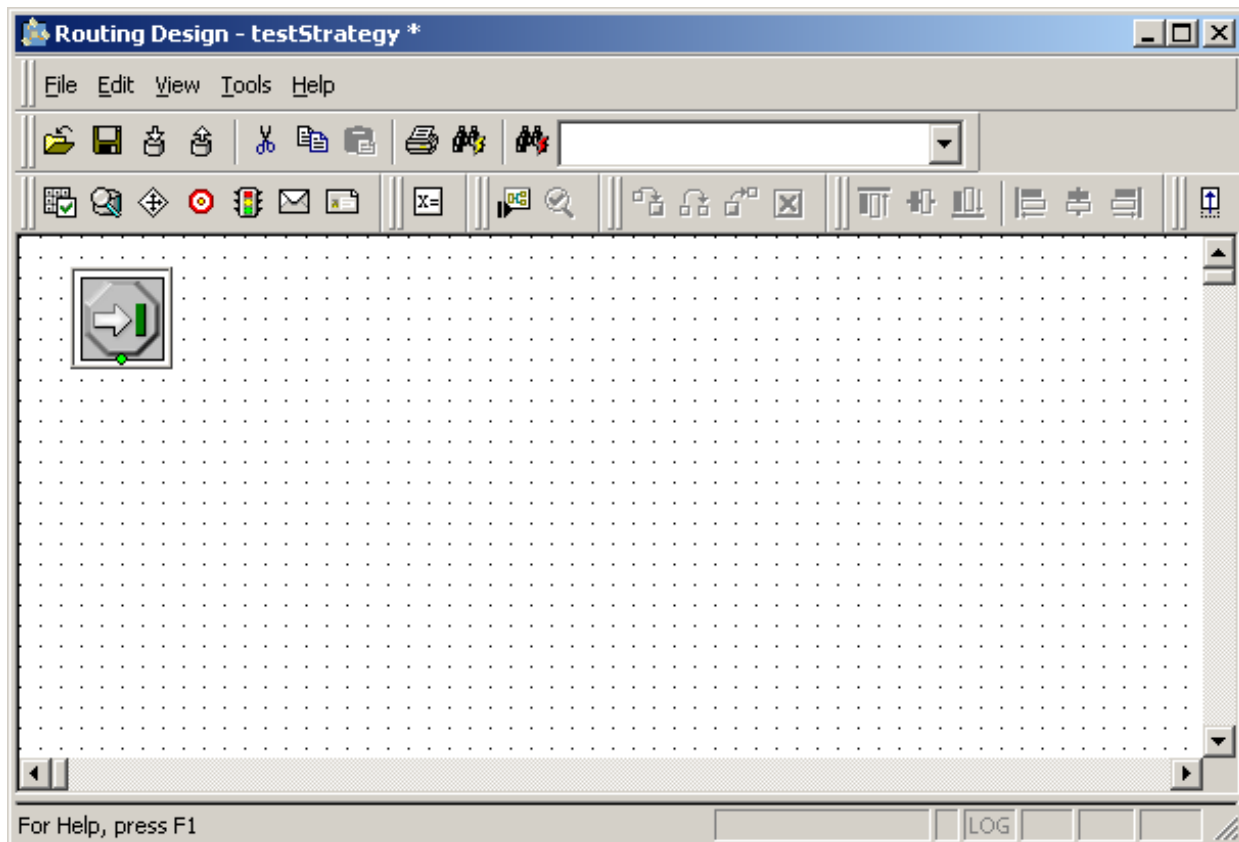


Figure 2: User Interface For Creating Strategies

You create certain objects used by strategies in Configuration Manager and Knowledge Manager. For example, when implementing a skills-based routing solution, you define `Skill` objects in Configuration Manager (see [Figure 3](#)) and then assign those `Skill` objects to agents (Person objects).

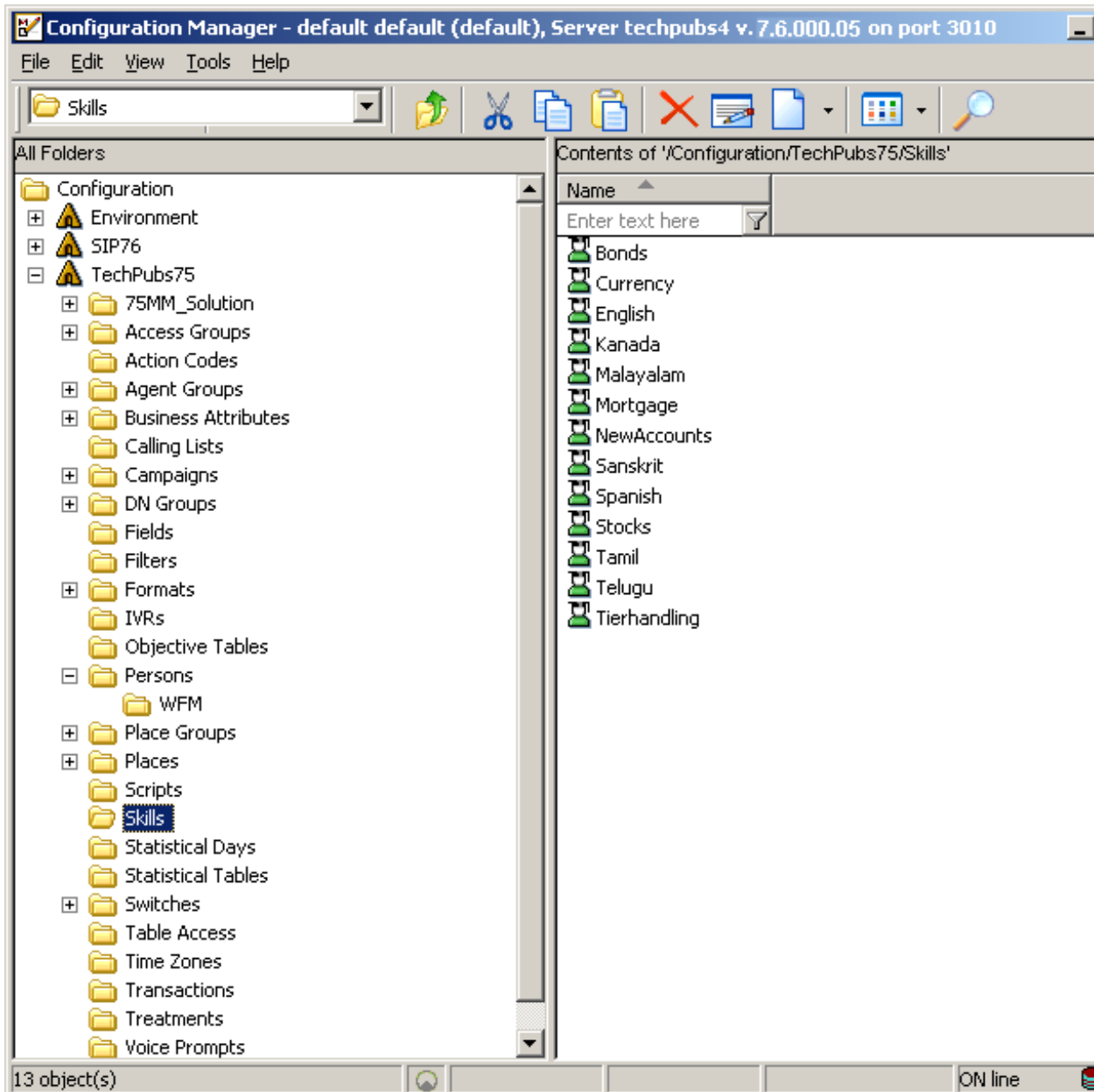


Figure 3: Configuration Manager User Interface

[Figure 4](#) shows the Agent Info tab of the Person Properties dialog box where you assign `Skill` objects and Skill Levels to Person objects.

4001 4001 (4001) [techpubs4:3010] Properties

Annex Security Dependency

General Agent Info Ranks Member Of

Default Place: 4001

Capacity Rule: Default_One_media_allows_mo

Cost contract: [None]

Site: [None]

Skills

Skill	Level
Bonds	10
Currency	9
English	8

Add Skill Edit Skill Delete Skill

Login IDs

Agent Login	Switch	Wrap-up Time
4001	75_G3_1	0

Add ID Edit ID Delete ID

OK Cancel Apply Help

Figure 4: Person Properties Dialog Box

You use the Genesys Knowledge Manager GUI to define standard responses, fields for standard responses, classification categories, and screening rules. Chapter 5, “Share Agent By Service Level Agreement Routing” on [page 69](#), includes many GUI examples.

Functions

When creating a routing strategy, you have the option of using functions described in the *Universal Routing 7.6 Reference Manual*. For example, if implementing a share agent by service level agreement routing solution, you can use the Function object to specify target parameters (see Figure 44 on [page 81](#)).

Options

Options control how interactions are handled and communications with other servers. For example, a business-priority routing solution uses the options described in Table 1 on [page 52](#). Options, described in the *Universal Routing*

7.6 Reference Manual, are configured in the Configuration Manager URS Application object (see [Figure 5](#)).

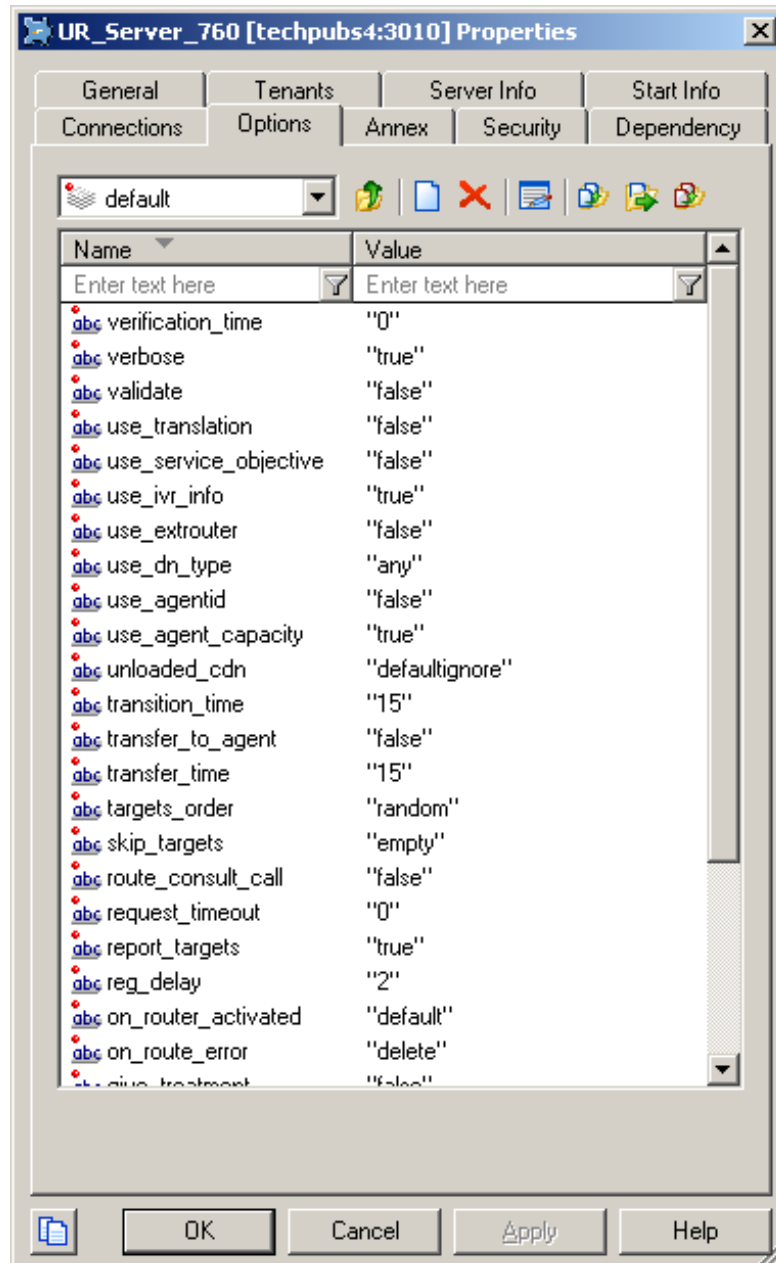


Figure 5: URS Application Object, Options Tab

Data Storage

When you save a strategy in IRD, the strategy source is comprised of the following elements:

- A Configuration Manager object of type `Transaction`. The `Transactions` folder is located under the `Tenant` folder. It can contain one or more of the following items that have been configured in IRD: routing rules, business rules, interaction data, attributes, list objects, macros and statistics.
- A Configuration Manager object of type `Script`. The `Scripts` folder is also located under the `Tenant` folder. It contains the compiled routing strategy code and the path to the `*.rbn` file, which describes the graphical portion of the strategy.
- The graphical portion of the strategy, which is required in order to view and edit the strategy. This is contained in a file with an `*.rbn` extension. The path to the `*.rbn` file is referenced in two places: the Configuration Manager `Script` object, and the IRD Save and Import dialog boxes.

When you use the Save (for a new strategy), Save As, Import from File, or Create Copy command, IRD opens a dialog box, where you have the option of saving the `*.rbn` file on a network drive or centrally in the Configuration Database. Because the dialog box appears when you perform any of these actions, you can overwrite previous storage settings at any time.

If security is a consideration, you might want to use the database storage method to save `*.rbn` files. For example, if you are a Service Provider, you might not want your subscribers to have access to your corporate servers. In this case, saving the `*.rbn` file in the Configuration Database is the preferred method.

For information about running a script that creates the database tables in the Configuration Database where `*.rbn` files are stored, see the *Universal Routing 7.6 Deployment Guide*.

Universal Routing Functionality

Genesys Universal Routing functionality is not limited to the types of routing discussed in this guide. Other important functionality is listed below.

- Database-driven routing.
- Agent-level routing, including routing based on agent schedules (workforce routing).
- Skills-based routing.
- Virtual agent groups with priority routing across virtual queues.
- Service-level routing.
- Multi-site routing.
- Statistical routing.
- Routing voice interactions across tenants.
- Priority tuning for voice interactions.
- Business Attribute assignment.

- Strategy debugging.
- Sharing strategies between environments.
- High availability of Enterprise Routing and Network Routing solutions.
- Support for interaction workflows (business processes) that route interactions in and out of various processing objects, such as queues and routing strategies.
- Specialized interaction processing objects, such as objects for communicating with Web Services outside of Genesys and using that information in a strategy. Interaction Routing Designer contains over 148 specialized strategy-building objects for use in strategies.
- Open media support.
- Routing using agent capacity information.
- Strategy support for ring-no-answer situations.
- Routing to and setting thresholds for non-configured DNSs.
- Service level agreement routing.
- Cost-based routing.
- Genesys Outbound Contact support, including support for proactive routing and for agents participating in multiple outbound campaigns.
- Load balancing.

For more information on these functional areas, start with the *Universal Routing 7.6 Deployment Guide*.



Chapter

2

Skills-Based Routing

This chapter describes skills-based routing and presents an example strategy. It contains the following topics:

- [About Skills-Based Routing, page 25](#)
- [Virtual Agent Groups, page 26](#)
- [Configuration Manager Preparation, page 27](#)
- [Assigning Skills to Agents, page 28](#)
- [Example Skills-Based Routing Strategy, page 29](#)
- [Routing Based On a Skill Expression, page 35](#)
- [Functions for Skills-Based Routing, page 36](#)
- [IRD Objects for Skills-Based Routing, page 37](#)

About Skills-Based Routing

To determine the best agent to handle an interaction, URS evaluates:

- Customer information stored in a database.
- What service the customer requests.
- The profiles of the available agents.

Agent profiles include such things as skill types and skill levels. *Skill types* refer to the skills or knowledge an agent has in a particular area and may include language, customer service, and other skills needed for the contact center. *Skill levels* refer to an agent's level of proficiency for a particular skill. You specify agent skill types and skill levels in Configuration Manager.

Using IRD, you can design strategies that segment interactions based on selected criteria such as customer value, data collected from a database, and/or IVR-collected digits related to the service requested. You can then route these interactions to the agent with the best skill profile, which can be a combination of agent skills and skill levels to specifically meet a customer's needs.

Use Case

For example, a customer may be a premier-level client from France who wants to make a basic stock trade. This customer requires an experienced agent who is fluent in French and has knowledge of stock trading. You can create a strategy that segments based on skill and skill levels for account level, language, and stock trading. The interaction could then be routed to an agent who has a high-level skill in French and a medium-level skill in stocks.

You do not have to group agents together according to skill type or levels, by switch location, or ACD queue. URS stores the agent profiles and creates a list of agents available for each interaction based on the skills needed for handling the interaction. URS uses Stat Server to determine the most available agent who has these skills.

Enterprise Routing and Network Routing solutions handle agents from virtual contact centers (multi-site contact centers) as dynamic work groups formed according to the agent skill profile requested. These dynamic work groups are transparent to geographical location and PBXs.

Virtual Agent Groups

Virtual agent groups combine agents with similar skills or responsibilities regardless of their work location. Stated another way, a group of agents is considered to be *virtual* if agents do not permanently belong to the group. Instead, Stat Server assigns an agent to the group when an agent meets the criteria specified by the virtual group's definition. Stat Server adds agents to, or removes them from, the group if agent parameters that affect eligibility change or if the specified criteria are modified.

Stat Server currently supports virtual group functionality with three types of agent parameters:

- A skill configured for an agent
- An ACD queue to which an agent is logged in
- A switch into which an agent is logged in

You can simultaneously specify these types of parameters in an expression for a single virtual group.

Note: For more information on the skill, ACD queue, and switch agent parameters as well as configuring virtual agent groups in the `Annex` tab of the `Agent Group` object, see the *Framework 7.6 Stat Server User's Guide*, specifically the chapter on Virtual Agent Groups.

Agents can be in more than one group and URS can determine the availability of an agent across all agent groups using Stat Server. You can add or remove

agents from agent groups as needed. URS and Genesys reporting applications are immediately notified of the changes.

Configuration Manager Preparation

If you plan to route based on agent skills or skill levels (see [page 26](#)), you must first create Skill objects. You do this in a user interface called Configuration Manager (see [Figure 3](#) on [page 19](#)).

Under the desired Tenant, right-click the Skills folder shown in [Figure 3](#) on [page 19](#) and select New > Skill from the shortcut menu. The New Skill Properties dialog box opens where you define the skill. [Figure 6](#) shows the General tab of an example completed properties dialog box.

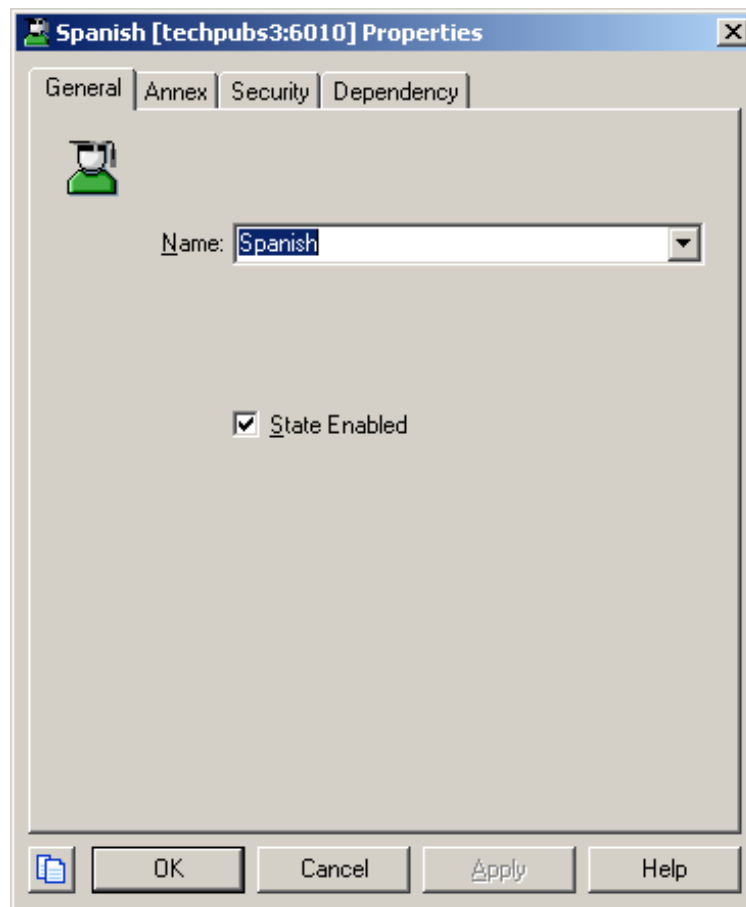


Figure 6: Skill Properties Dialog Box

Note: The name of skills, if used in a skill expression, cannot exceed 126 bytes.

Assigning Skills to Agents

Once you have defined all the necessary skills, you can assign those skills to existing agent (Person) and Agent Group objects or create new objects to assign those skills to. The example below describes how to define new Person objects.

Note: The example given here represents one way to configure skills-based routing. You can also configure skills-based routing in the Annex tab of Agent Group objects as described in the *Framework 7.6 Stat Server User's Guide*, specifically the section on configuring virtual agent groups in the Virtual Agent Groups chapter.

Right-click the Persons folder shown in Figure 3 on [page 19](#) and select New > Person from the shortcut menu. The New Person Properties dialog box opens for defining Person objects, such as agents, quality assurance personnel, managers, and supervisors. Figure 7 shows example completed General and Agent Info tabs.

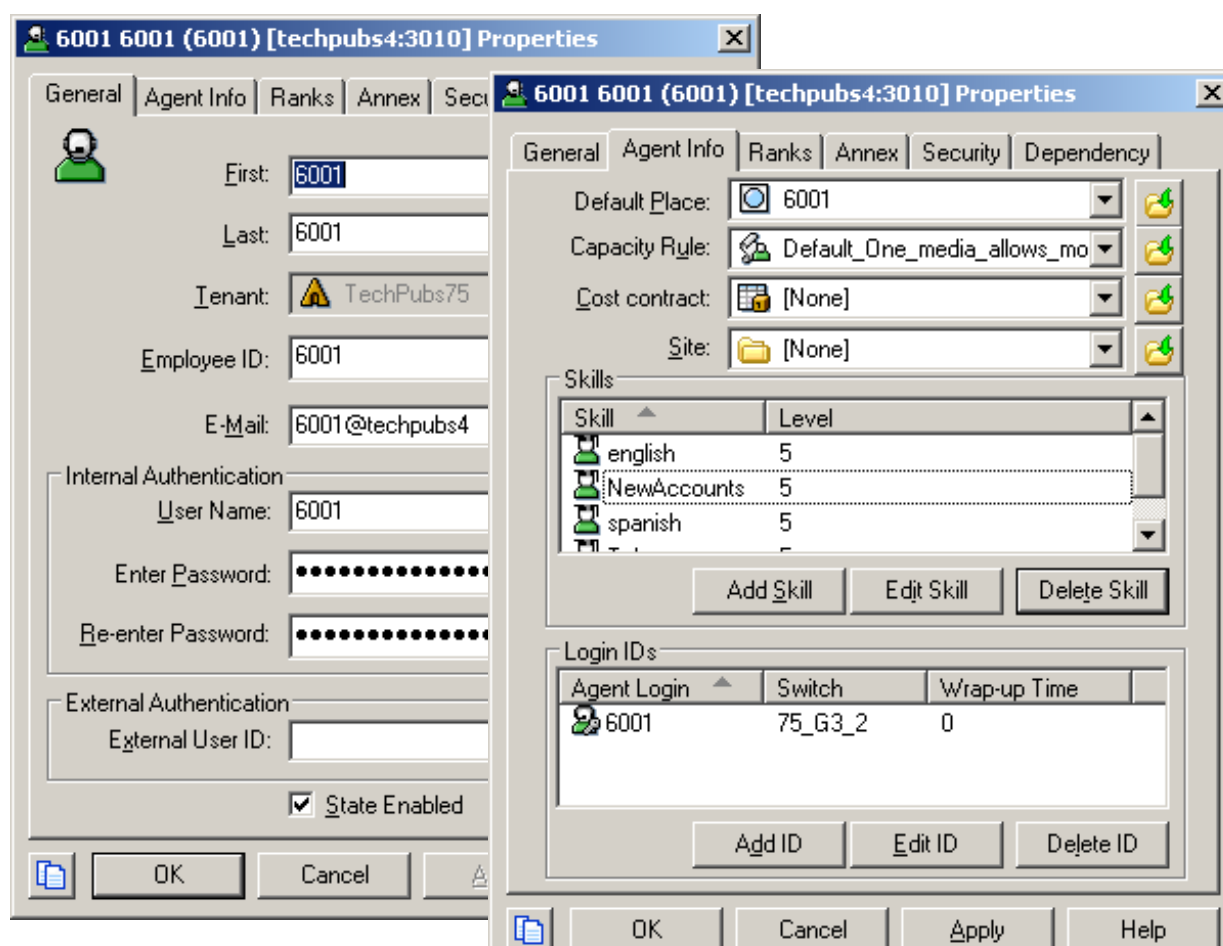


Figure 7: New Persons Dialog Box, General and Agent Info Tabs

Note that each skill can be assigned a `Skill Level`.

Note: If applicable, you can also assign a `Capacity Rule` to the agent, which defines the agent's ability to handle multiple interactions. For more information, see the *Genesys 7.1 Resource Capacity Planning Guide*.

Once you have defined all necessary skills and assigned them to agents, you have done the necessary preparation for skills-based routing strategies.

Example Skills-Based Routing Strategy

This section presents a skills-based routing strategy for routing voice interactions.

Scenario

A cable provider would like to send calls from potential customers to representatives responsible for new accounts. The cable company sets up an IVR to prompt callers for:

The language they prefer to speak:

- 1 for English
- 2 for Spanish

Their account type:

- 1 for new accounts
- 2 for existing accounts

Based on the customer's response, the routing strategy routes the call to an agent that speaks the customer language and handles the customer's account needs. The agent gets a screen pop indicating the customer's preferred language.

The calls will wait for 10 seconds (see `Timeout` in Figure 15 on [page 35](#)) for an agent with a skill level of 5 or above. If no such agent is found, URS sends the call to the `Default Destination`.

Interaction Data

Interactive Voice Response (IVR) interfaces can request T-Server to attach data to calls. This enables responses in the IVR to be passed to the Genesys software. URS can then receive this attached data from T-Server messaging, such as in an `EventRouteRequest` message.

This example strategy uses `Interaction Data`, which:

- Defines the attached data keys used in strategy.
- Allows strategies to gather attached data from event messaging.

- Enables strategies to attach data for screen pops.

Note: Interaction data names must match the names of keys used in the IVR interface, the agent desktop application for screen pops, or any other applications that will use the attached data.

The example strategy assumes that the IVR attaches the account type with the key `acct_type` and the customer's preferred language with the key `language`. The desktop programmer used the key `language` for the agent screen pop to indicate the customer's preferred language.

Figure 8 shows the language Interaction Data configured in IRD for the example skills routing strategy.

Interaction Data				
Name	Type	Description	Values	M
language_name	string	desktop programmers and scree...	English,Spanish	
language	string	IVR attaches customer's preferr...	1,2	
LANGUAGE_CODE	string	Language as defined by DNIS.	English,Spanish	
OPT_OUT_REASON_C...	string	RoutingReason set by VRU	Client Manager,...	
PRC_RELATIONSHIP_...	string			
PRELIMINARY_TARGET	string	Number for VRU to Dial.		
PrimaryWaitExceeded	string		yes,no	
PRODUCT_CODE	string			
PRODUCT_SUB_CODE	string			
PROMOTION_ACCEPT...	string		YES,NO	
PROMOTION_CODE	string	Cross-sell offer code, referred t...		
RELATIONSHIP_GROUP	string	Customer Segment/Tier from BO...	00,01,02,03,04...	
SkillLevelWhenRouted	int			
SLT	string	Customer Service Level Indicato...		

Figure 8: Interaction Data Configured for Skills Routing Strategy

Note: For detailed information on configuring Interaction Data, see the *Universal Routing 7.6 Interaction Routing Designer help*.

Strategy in Design View

Figure 9 shows the example skills routing strategy in the IRD Routing Design window.

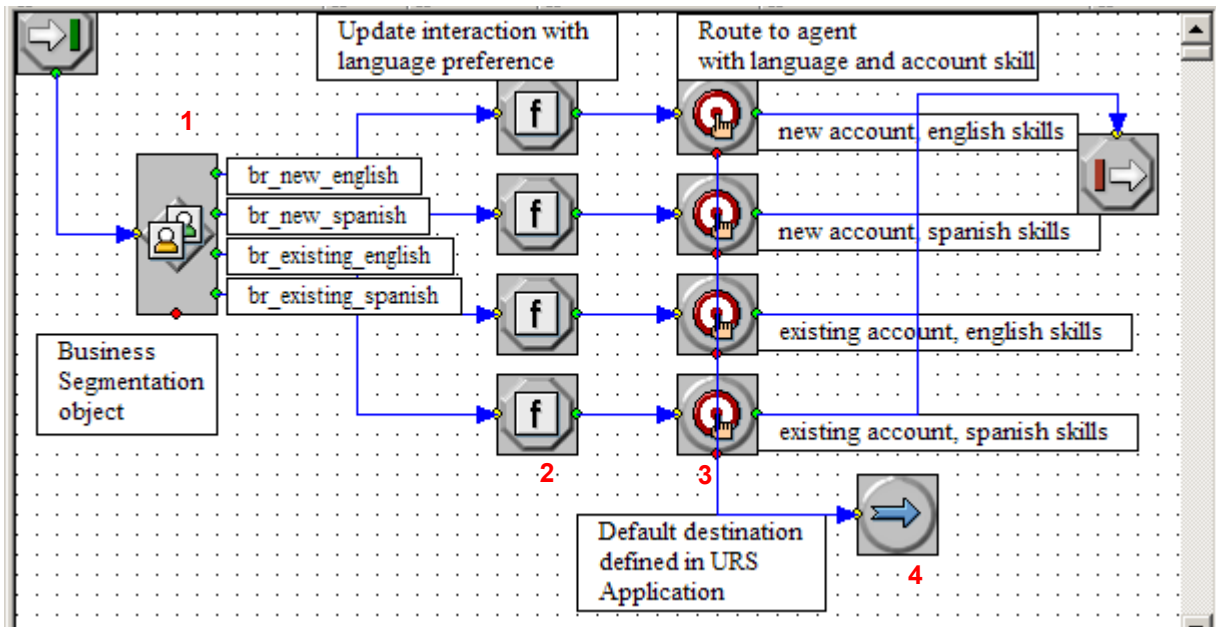


Figure 9: Example Skills-Based Routing Strategy

Summary of Flow

The IRD objects described in this section are keyed to the numbers in [Figure 9](#).

1. A Business Segmentation object causes interactions to take different paths based on Business Rules (see [Figure 10](#)).

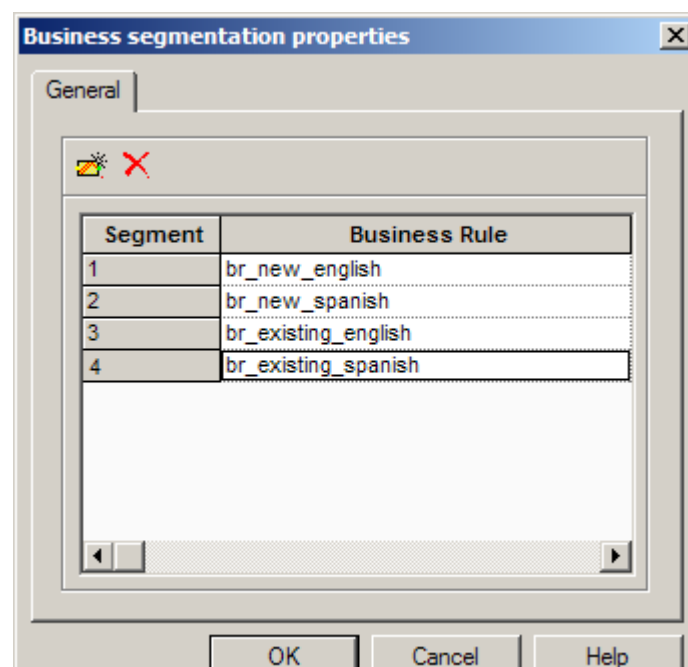


Figure 10: Business Segmentation Object

Attributes and Business Rules

The Business Rules in Figure 10 on [page 31](#) are created from Attributes, as described in the *Universal Routing 7.6 Interaction Routing Designer Help*. Attributes and Business Rules are one way to create logical expressions used for segmentation (see “Routing Based On a Skill Expression” on [page 35](#) for another way). Figure 11 shows the Attributes configured for the Business Rules in Figure 10 on [page 31](#).

Attributes			
Object	Value	Description	Access
[-] att_acct_type		account type	RHD
val_existing	InteractionData[acct_type] = '2'		
val_new	InteractionData[acct_type] = '1'		
[-] att_language		language	RHD
val_english	InteractionData[language] = '1'		
val_spanish	InteractionData[language] = '2'		
[+] attr1		this is for testing purp...	RHD
[+] attr2			RHD
[+] attr3			RHD
[+] attr4			RHD

Used in:
 Business Rule: br_new_english
 Business Rule: br_new_spanish
 Business Rule: br_existing_english
 Business Rule: br_existing_spanish

Figure 11: Example Attributes

Figure 12 shows the Business Rules used in Figure 10 on [page 31](#) as they appear in the IRD main window:

Business Rules				
Object	Value	Description	Details	Access
[-] br_existing_english		existing accounts, English		RHD
att_language	val_engl...		InteractionData[language] = '1'	
att_acct_type	val_exist...		InteractionData[acct_type] = '2'	
[-] br_existing_spanish		existing accounts, Spanish		RHD
att_language	val_spa...		InteractionData[language] = '2'	
att_acct_type	val_exist...		InteractionData[acct_type] = '2'	
[-] br_new_english		new accounts, English		RHD
att_language	val_engl...		InteractionData[language] = '1'	
att_acct_type	val_new		InteractionData[acct_type] = '1'	
[-] br_new_spanish		new accounts, Spanish		RHD
att_language	val_spa...		InteractionData[language] = '2'	
att_acct_type	val_new		InteractionData[acct_type] = '1'	
[+] business_rule_2				RHD

Figure 12: Example Business Rules

2. If the call matches the Business Rule shown in Figure 10 on [page 31](#), it is routed to the corresponding Function object.

For each branch of the Business Segmentation object in Figure 9 on [page 31](#):

English, new accounts (br_new_english)

Spanish, new accounts (br_new_spanish)

English, existing accounts (br_existing_english)

Spanish, existing accounts (br_existing_spanish)

a Function object updates the interaction with the customer's preferred language previously entered via the IVR.

[Figure 13](#) shows the Function object used for updating the new accounts english segment (top segment in Figure 9 on [page 31](#)).

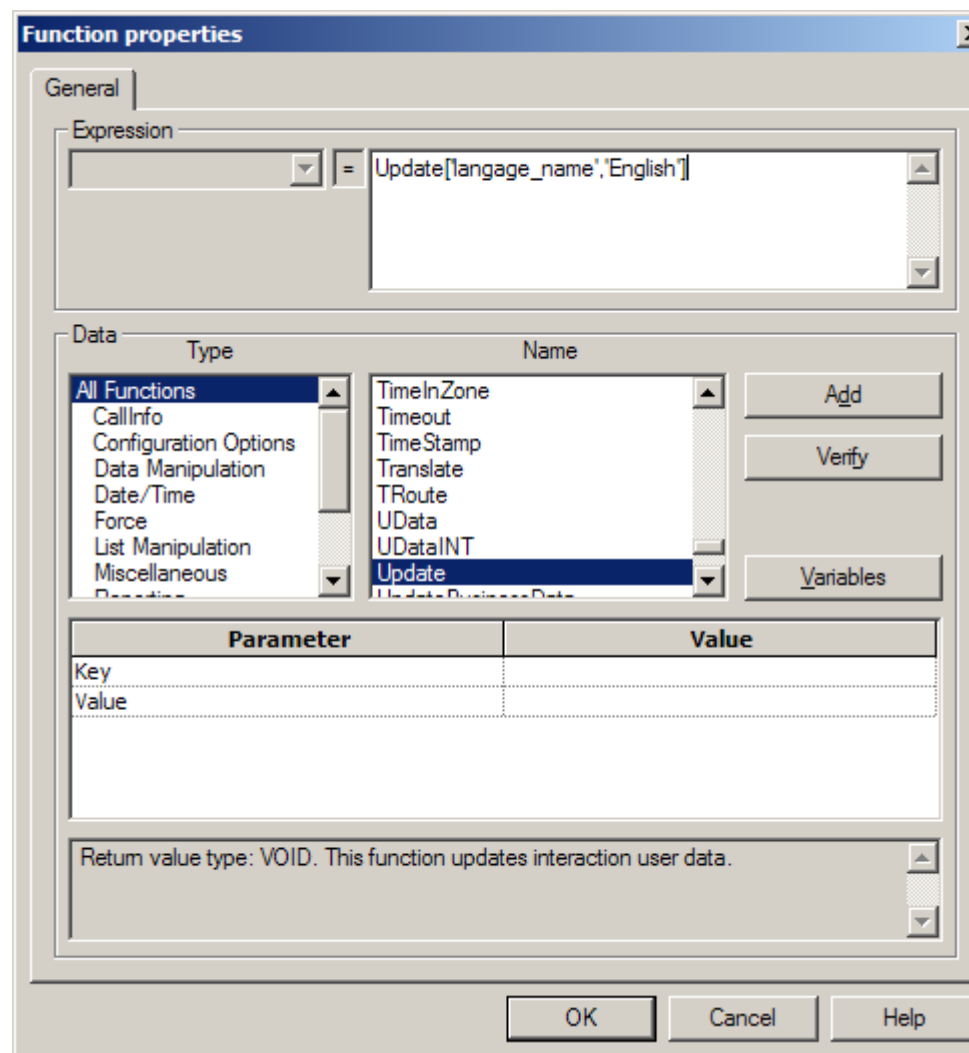


Figure 13: Function Object for Updating Interaction (English)

3. For each branch of the Business Segmentation object:

English, new accounts (br_new_english)

Spanish, new accounts (br_new_spanish)

English, existing accounts (br_existing_english)

Spanish, existing accounts (br_existing_spanish)

a corresponding Routing Selection object targets an agent group with the required language/account skill. [Figure 14](#) shows how a Person (agent) object with english, spanish, and NewAccounts skills might appear in the Configuration Manager Person properties dialog box.

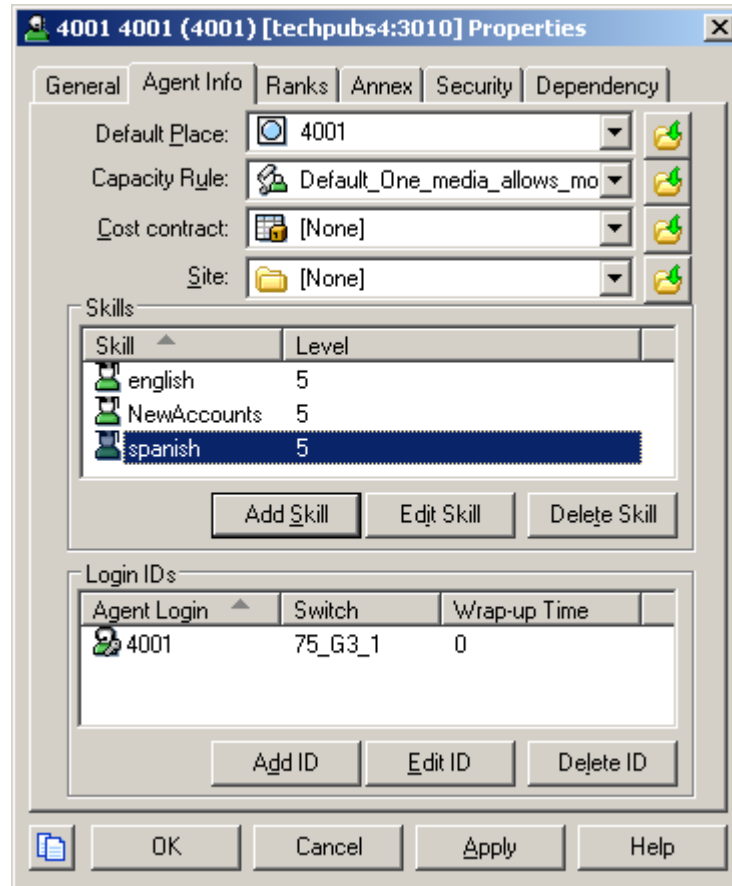


Figure 14: Agent Object in Configuration Manager, Agent Info Tab

[Figure 15](#) shows the properties dialog box for the Routing Selection object shown in the strategy in [Figure 9](#) on [page 31](#).

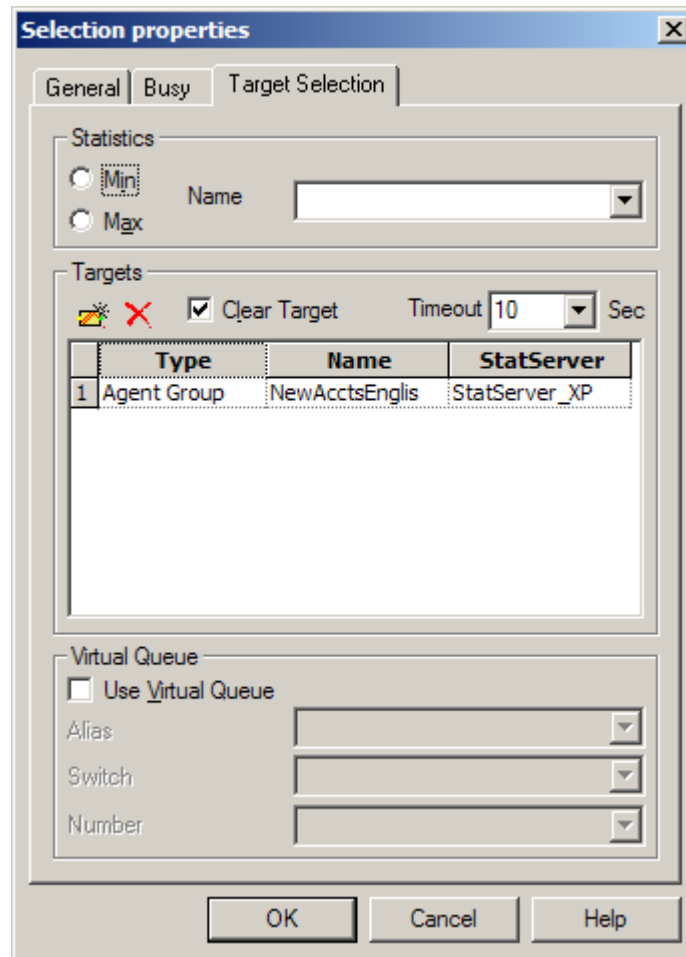


Figure 15: Routing Selection Properties Dialog Box

4. If an agent is not available within 10 seconds, the interaction goes through the red port to the Default Destination, as specified in Universal Routing Server options.

Routing Based On a Skill Expression

You can also route interactions to the most appropriately skilled agent using a skill expression created in IRD's Expression Builder. [Figure 16](#) shows the Skill Expression Properties dialog box after constructing a skill expression.

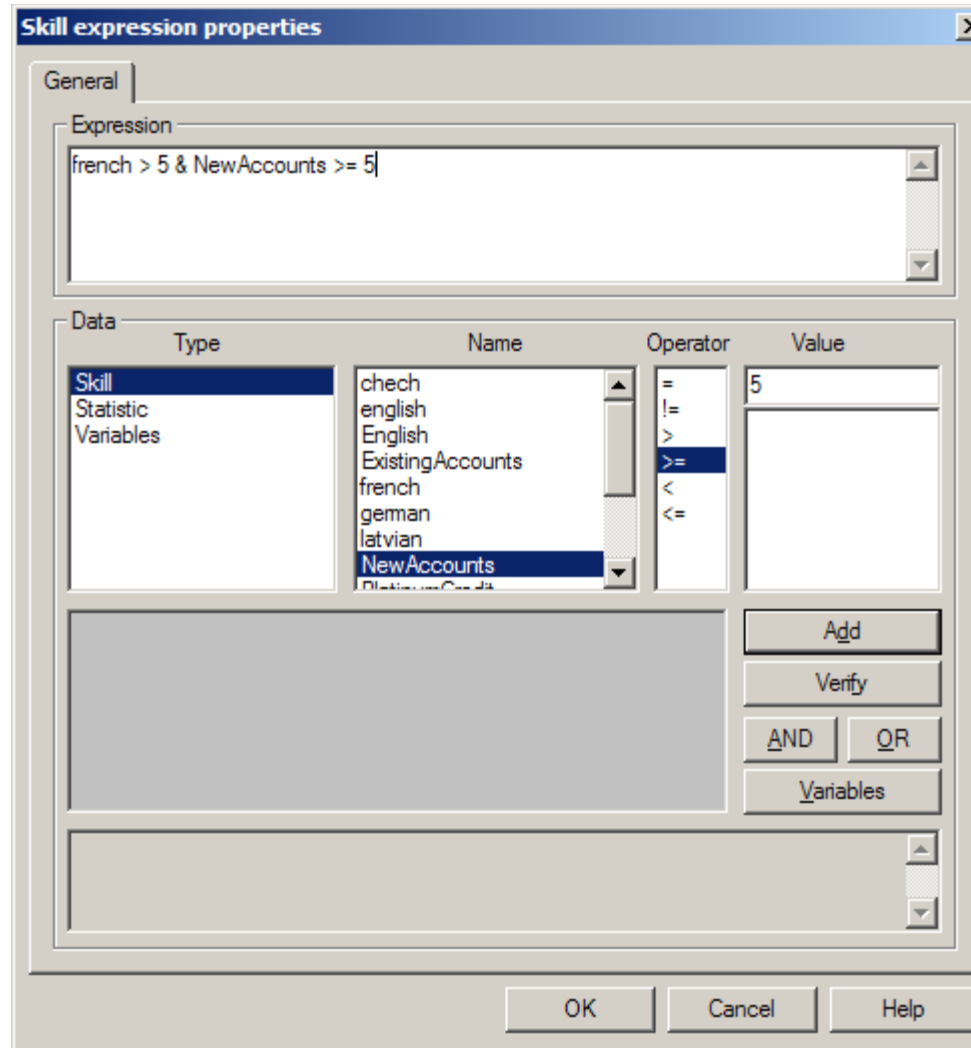


Figure 16: Skill Expression Properties Dialog Box

For information on using skill expressions as routing targets and building expressions, see *Universal Routing 7.6 Reference Manual*

Functions for Skills-Based Routing

As described in the *Universal Routing 7.6 Reference Manual*, IRD functions selected in the Function object (see Figure 13 on [page 33](#)) that support skill expressions include:

- CountSkillInGroup
- GetSkillInGroup
- CreateSkillGroup
- Multiskill

IRD Objects for Skills-Based Routing

As described in the *Universal Routing 7.6 Reference Manual*, the following IRD strategy-building objects allow the Skill routing target:

- Selection
- Statistics
- Service Level
- Route Interaction
- Workbin

Note: The name of skills, if used in a skill expression, cannot exceed 126 bytes.



Chapter

3

Business-Priority Routing

Business-priority routing encompasses specialized selection criteria that URS can consider when routing, including *priority*, *interaction age*, *what-if wait time*, and *service objective risk factor*.

These selection criteria are in addition the types of routing described in the section on Universal Routing Capabilities in the *Universal Routing 7.6 Deployment Guide*.

This chapter contains the following topics:

- [Use Cases, page 39](#)
- [Available Selection Criteria, page 40](#)
- [Support for Multimedia Interactions, page 46](#)
- [Recommended Settings, page 52](#)

Use Cases

In contact centers, it is common for an agent to be a member of multiple agent groups (real or virtual). It is also common for an agent to be able to receive interactions from multiple virtual queues. When such an agent becomes available, there can be multiple interactions waiting to be handled at the head of different virtual queues. The diagram in [Figure 17](#) illustrates this scenario.

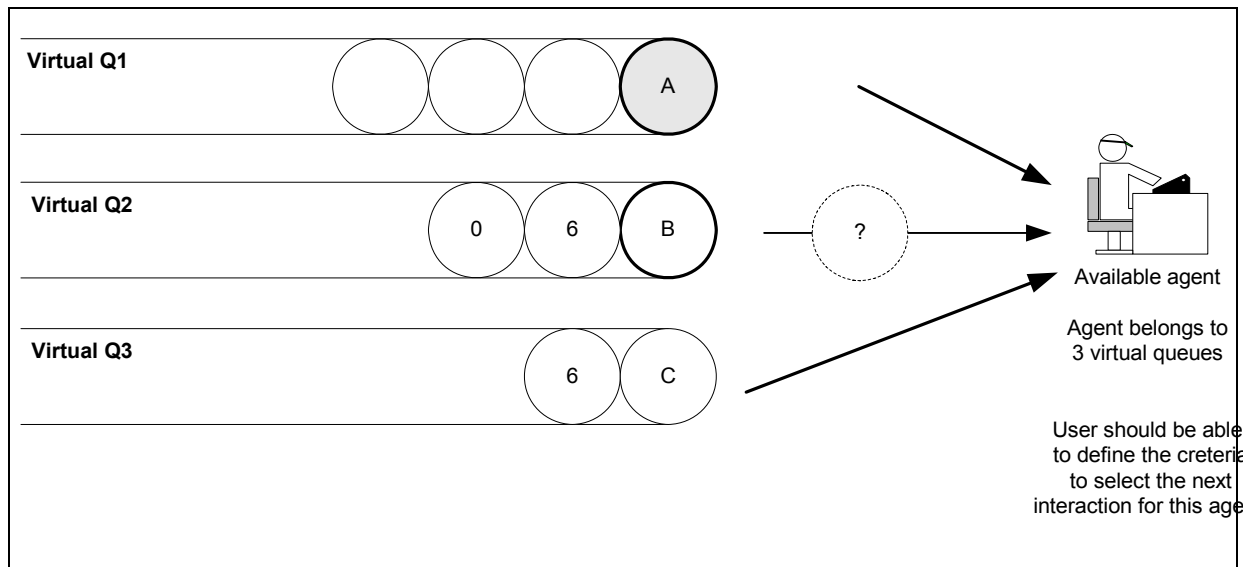


Figure 17: Agent with Interactions Waiting From Multiple Virtual Queues

In the above scenario, URS can decide which interaction is the most suitable for this agent based on the user-defined selection criteria discussed in this chapter.

Available Selection Criteria

In Universal Routing, you can route based on the following criteria:

- Highest priority interaction
- Longest current wait time
- Interaction with oldest age
- “What-if” wait time
- Highest risk factor in service objective based on current wait time
- Highest risk factor in service objective based on age of interaction
- Highest risk factor in service objective based on predicted wait time

The sections that follow discuss each method of selection.

Selecting the Highest Priority Interaction

Objective: Select the highest priority interaction when an agent can receive interactions of various priorities from multiple virtual queues.

Benefit: Prevents URS from routing a lower-priority item to an agent who belongs to multiple target groups.

Business Scenario

- Interactions are queued to Virtual Q1.
- Interactions are queued to Virtual Q2.
- Agent can receive interactions from VQ1 and VQ2.

As shown in [Figure 18](#), interactions with highest priority (at the head of the VQ1 with priority 10) are routed to the agent.

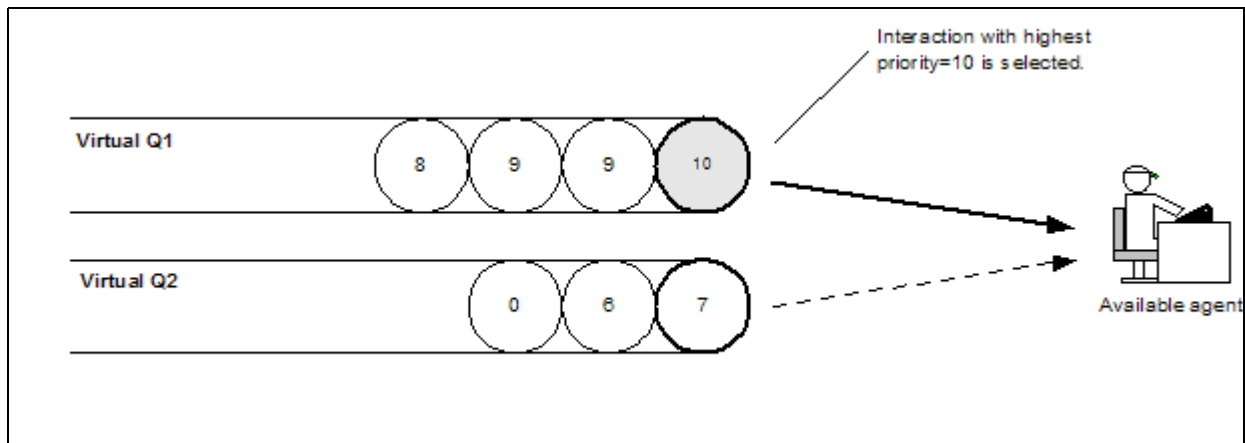


Figure 18: Highest Priority Interaction Selected

Selecting the Interaction with Longest Current Wait Time

Objective: Select the next interaction for an agent (who can be a member of multiple targets, such as multiple virtual queues) based on the current wait time in the virtual queue. The interaction with the longest current wait time in virtual queue is routed to an agent.

Definition: The current wait time is the amount of time that the interaction has been waiting in the virtual queue.

Benefit: Provides fair selection of interactions when customer is using FIFO routing.

Business Scenario

- Interactions are queued to Virtual Q1.
- Interactions are queued to Virtual Q2.
- Agent can receive interactions from VQ1 and VQ2.

As shown in [Figure 19](#), the interaction with longest current wait time (at the head of the VQ1 with 60 second current wait time) is routed to the agent.

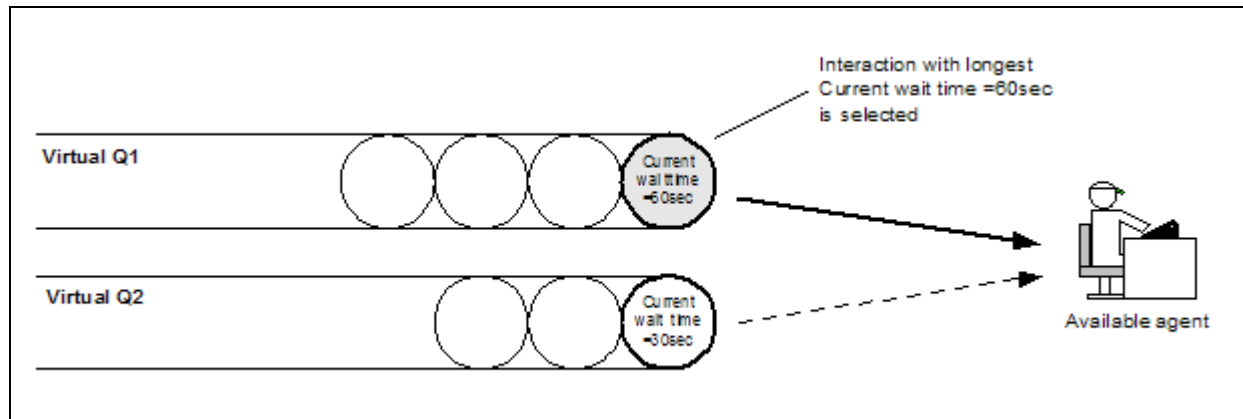


Figure 19: Interaction with Longest Current Wait Time Selected

Selecting an Interaction with the Oldest Age

Objective: Select the next interaction for an agent (who can be a member of multiple targets, such as multiple virtual queues) based on the interaction lifespan or age of interaction. URS routes the oldest interaction to an agent.

Definition: Age of interaction is the time accumulated since the interaction was first recognized by the Genesys software. To route by age of interaction, you must set function `SetInteractionAge` to `true` in the strategy at the first route point the interaction enters.

Benefit: Well-suited for contact centers that have many interaction collaborations and transfers among teams to fulfill customer requests.

Business Scenario

- Interactions are queued to Virtual Q1.
- Interactions are queued to Virtual Q2.
- Agent can receive interactions from VQ1 and VQ2.

See [Figure 20](#) for a diagram.

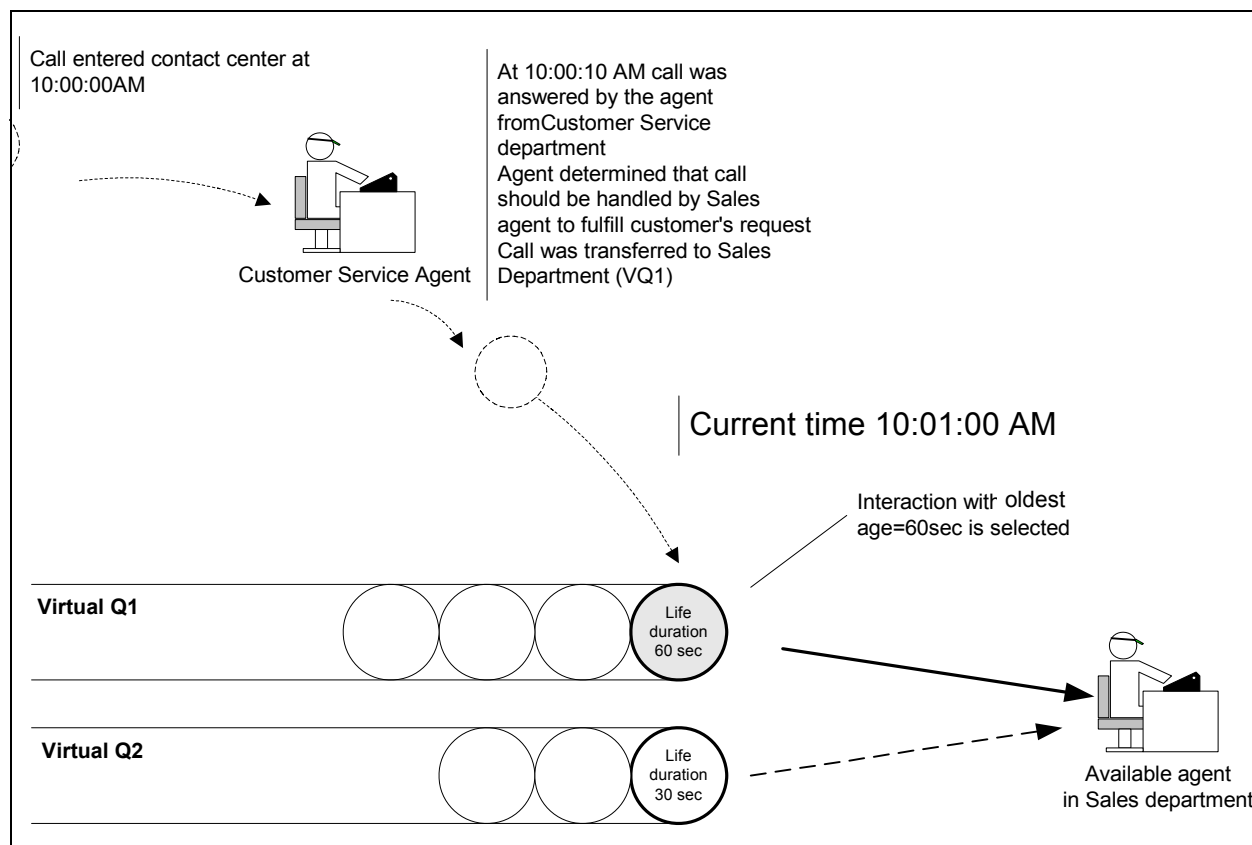


Figure 20: Interaction With Oldest Age Selected

Selecting Based On “What-If” Wait Time

Note: Genesys supports “What-If” Wait Time functionality for voice interactions only.

Objective: In an interaction-surplus scenario, select the next interaction for an agent (who can be a member of multiple targets, such as multiple virtual queues) by evaluating the worst-wait scenario if this interaction is not routed to the one currently available skilled agent right away (that is, evaluate the what-if scenario).

This interaction selection method is based on the observation that an overstaffed virtual queue tends to have interactions distributed faster than an understaffed queue. When an agent is shared among these unevenly staffed virtual queues, URS must decide which interaction from the queues must be routed first to the shared agent.

URS will predict the what-if wait time for each interaction for those queues. The what-if wait time of each interaction is the current wait time plus additional predicted wait time if a counterpart interaction is routed instead. URS will select the interaction for routing with the longest what-if wait time.

Definition: What-if wait time is the current wait time plus the additional predicted wait time if another competing interaction is routed instead. Technically, it is the current wait time plus the average speed of distributing interactions from the virtual queue.

Benefit: Favors the selection of an interaction from the understaffed queue. Balances the routing opportunity between overstaffed and understaffed queues, making sure that routing from the understaffed queue does not lack behind.

Business Scenario

- Interactions are queued to Virtual Q1 - Agent Group 1 with 10 agents.
- Interactions are queued to Virtual Q2 - Agent Group 2 with 30 agents.
- Agent belongs to Agent Group 1 and Agent Group 2 - can receive interactions from VQ1 and VQ2.
- A call queued to VQ1 staffed with a small number of agents has only been waiting in queue for 30 seconds. It has a predicted wait time of an additional 90 seconds because of the small number of agents assigned to the skill.
- Call queued to VQ1 which is staffed by many agents has been waiting for 60 seconds, but is predicted to wait in queue for an agent for only 15 seconds.

Predicted wait time will select the call for the specialized skill first, because its overall predicted wait time will be 120 seconds (30 + 90). The other call will continue to wait in queue because its overall predicted wait time is only 75 seconds. See [Figure 21](#) for a diagram.

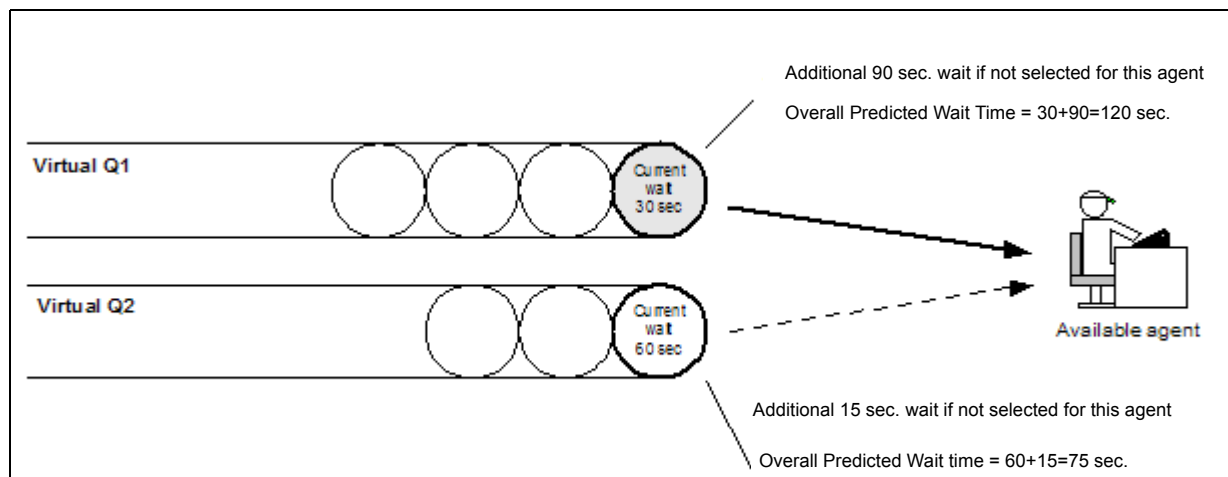


Figure 21: Interaction With Longest Predicted Wait Time Selected

Selecting Based On Highest Risk Factor of Service Objective

Objective: Selects the next interaction for an agent (who can be a member of multiple targets, such as multiple virtual queues) by determining which

interaction is most at risk relative to its particular time objective for servicing (service objective). Using this method, strategy developers can assign priority and incremental values to waiting interactions. The end result is that each interaction has a fair chance of being addressed within an acceptable service objective.

Benefit: Among queues, favors the selection of the interaction that has been waiting longest and has the highest risk of missing its service objective. This method is mainly used by voice contact centers that use first in/first out (FIFO) routing (i.e. not using priority in strategies) where straight FIFO adherence can be overridden by risk factor of service objective.

Types of Risk Factors

There are different types of risk factors for service objective that you can use to address the specific needs of your contact center.

1. Risk factor in service objective based on current wait time is calculated as current wait time divided by service objective.
2. Risk factor in service objective based on age of interaction is calculated as age of interaction divided by service objective.

Benefit: This selection method can be used by contact centers that have a lot of collaboration and transfer of interactions among teams in order to fulfill a customer request. The measurement of service level of the contact center is not based on queue level, but instead is based on the combined service objective. An example is a contact center that needs a customer interaction to be responded to within 24 hours, no matter how many different parties collaborate in the response.

3. Risk factor in service objective base on predicted wait time is calculated as predicted wait time divided by service objective.

Benefit: This selection method can be used by contact centers that want to use predicted wait time in an interaction surplus scenario, but also want service objective adherence.

Business Scenario

- Interaction are queued to Virtual Q1.
- Interaction are queued to Virtual Q2.
- Agent can receive interactions from VQ1 and VQ2.
- Current wait time of voice interaction in VQ1 is 10 seconds. Service objective for voice interactions is 20 seconds. Risk factor in service objective: $10/20 = 0.5$.
- Current wait time of voice interaction in VQ2 is 15 seconds. Service objective for voice interactions is 20 seconds. Risk factor in service objective: $15/20 = 0.75$.

As shown in Figure 22, the Interaction in Virtual Q2 will be routed to an agent.

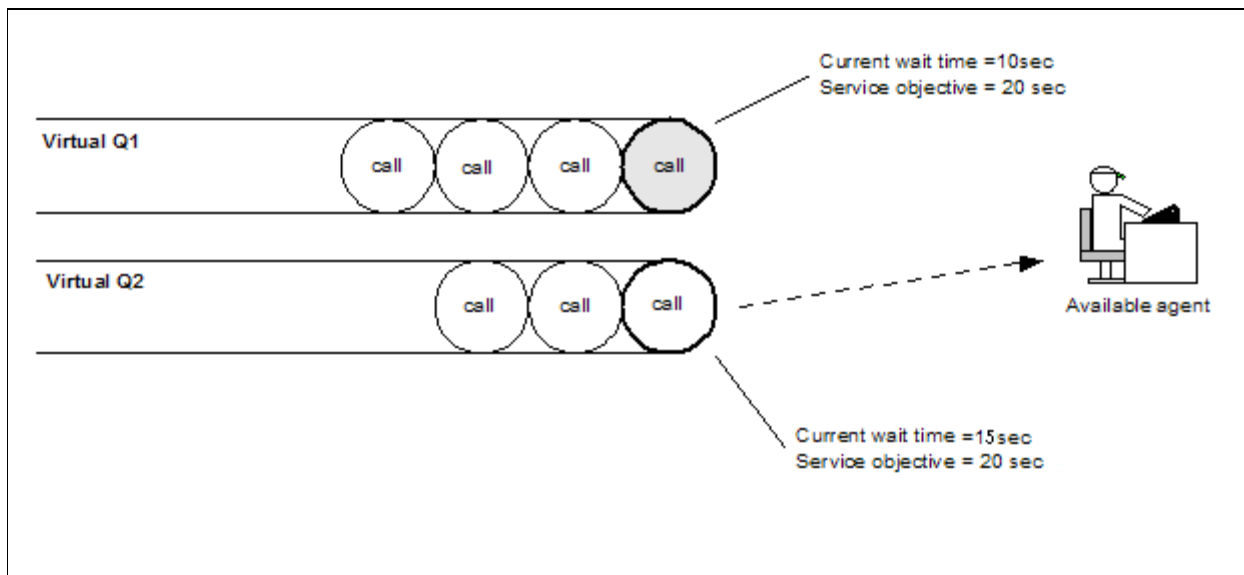


Figure 22: Interaction With Highest Risk Factor of Service Objective Selected

Support for Multimedia Interactions

Note: Genesys supports business-priority routing for interactions of all media types when interactions are processed by URS. When interactions are processed outside of URS (such as by Interaction Server in a business process that controls the entire life cycle of long-living (offline) interactions such as e-mails), some additional configuration is required in order to store and process interactions residing in persistent queues. For more information, contact your Genesys representative.

At the present time, three out of four varieties of business-priority routing and various their combinations can be implemented outside of URS for interactions of all media types:

- Priority routing
- Interaction age-based routing
- Service Objective routing

Genesys does not support “What-if wait time” business-priority routing when interactions are processed outside of URS.

Implementation for Multimedia Interactions

This section describes how to use business-priority routing for multimedia interactions. It builds on information presented in the *Universal Routing 7.6*

Business Process User's Guide, specifically the chapter on creating business process objects and the section on creating View objects.

Note: In order to understand the sequence of steps presented below, you must be familiar with the Queue, View, and Strategy objects as discussed in the above guide.

1. Select interactions in persistent queues based on the `Priority` attribute (Business Attributes folder in Configuration Manager). [Figure 23](#) shows a sample entry for selecting by priority in the Parameterized Conditions tab for a View object in IRD's Interaction Design window.

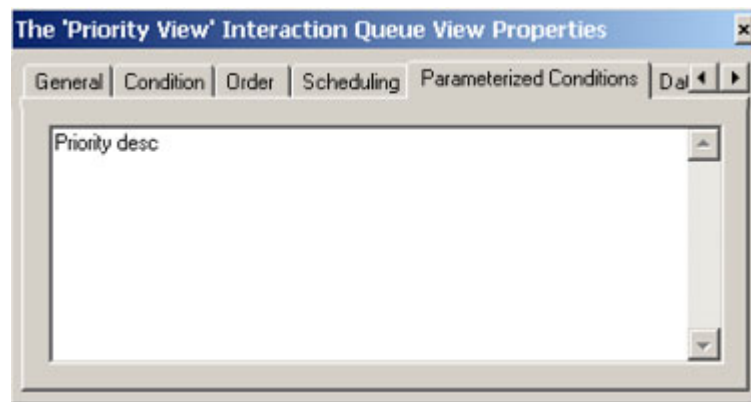


Figure 23: View Object Properties, Selecting by Priority

2. When the interaction enters the strategy, use the current value of the `Priority` attribute to set the priority of the interaction in the virtual queue and its default priority (see [Figure 24](#)).

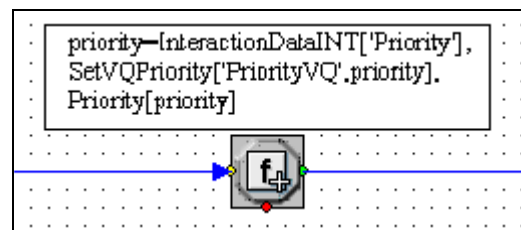


Figure 24: Function Object, Setting Priority with InteractionDataINT

3. When the interaction leaves the strategy and is sent to a Queue Interaction object, update the Business Attribute with the the current value (see [Figure 25](#)).

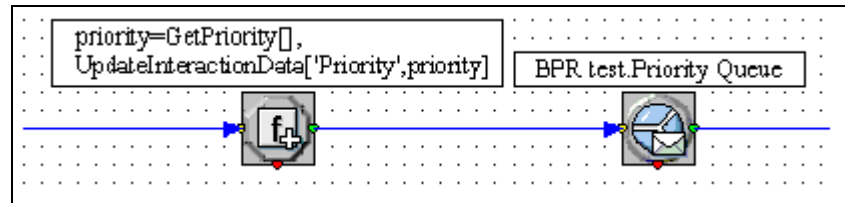


Figure 25: Interaction Sent to Queue Object After Update

4. Select interactions in persistent queues based on their age. [Figure 26](#) shows a sample entry for sorting by age in the Parameterized Conditions tab.

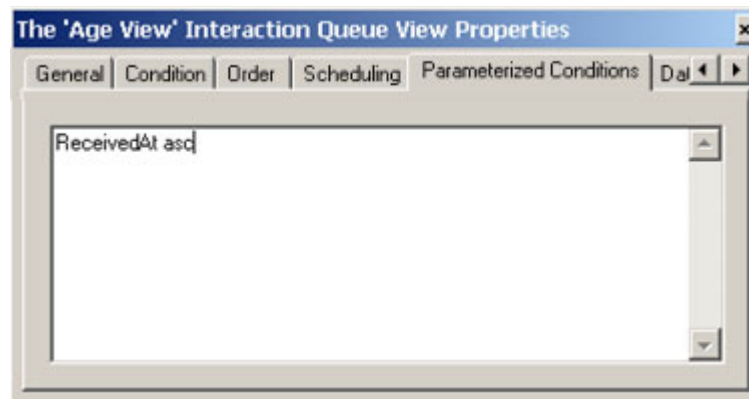


Figure 26: View Object Properties, Selecting by Age

5. Select interactions in persistent queues based on their priority and age. [Figure 27](#) shows a sample entry for selecting by priority and age in the Parameterized Conditions tab.

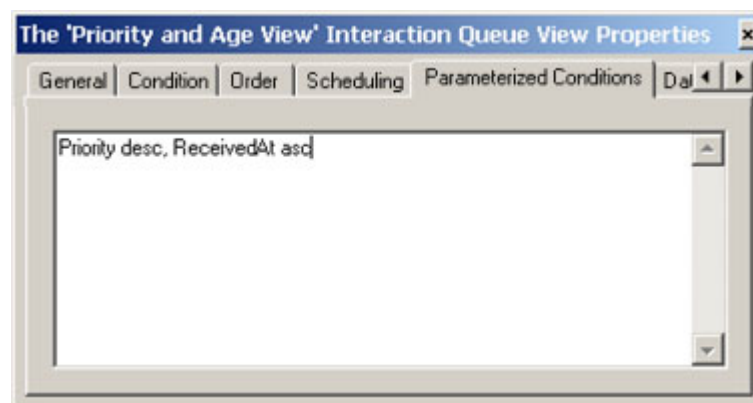


Figure 27: View Object Properties, Selecting by Priority and Age

6. Increase the priority of interactions depending on their time in the persistent queue. Sort interactions by their time in queue and update interactions that have waited more than 20 minutes. [Figure 28](#) shows a sample entry in the Parameterized Conditions tab.

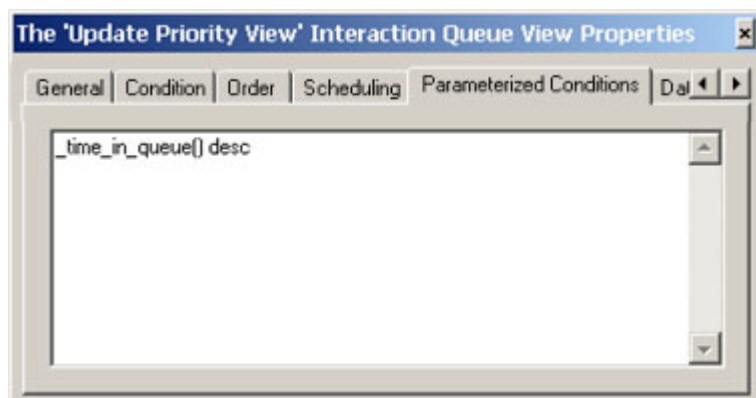


Figure 28: View Object Properties, Selecting by Time in Queue

7. From time to time, select interactions that have waited more than 20 minutes in the queue in order to increase their priority. [Figure 29](#) shows a sample entry in the Parameterized Conditions tab.

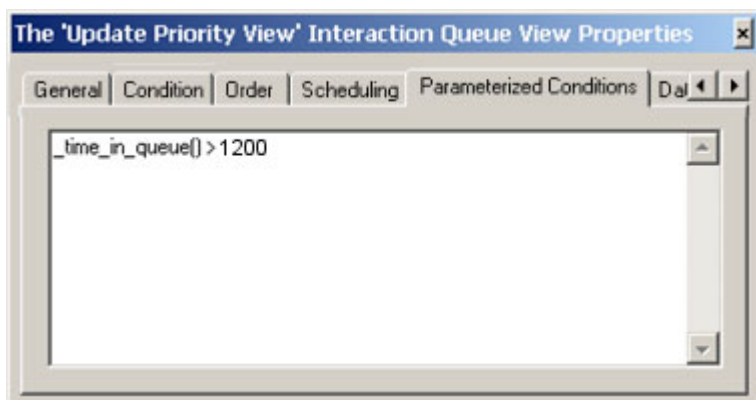


Figure 29: View Object Properties, Selecting Interactions Over 20 Minutes

[Figure 30](#) shows how the above implementation might look in a sample business process.

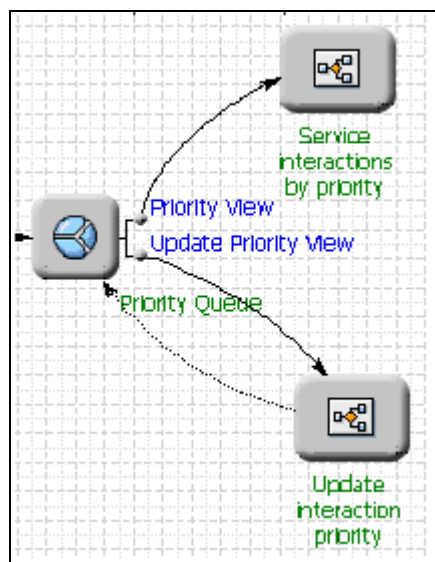


Figure 30:

Figure 31 shows a strategy sample that updates interaction priority.

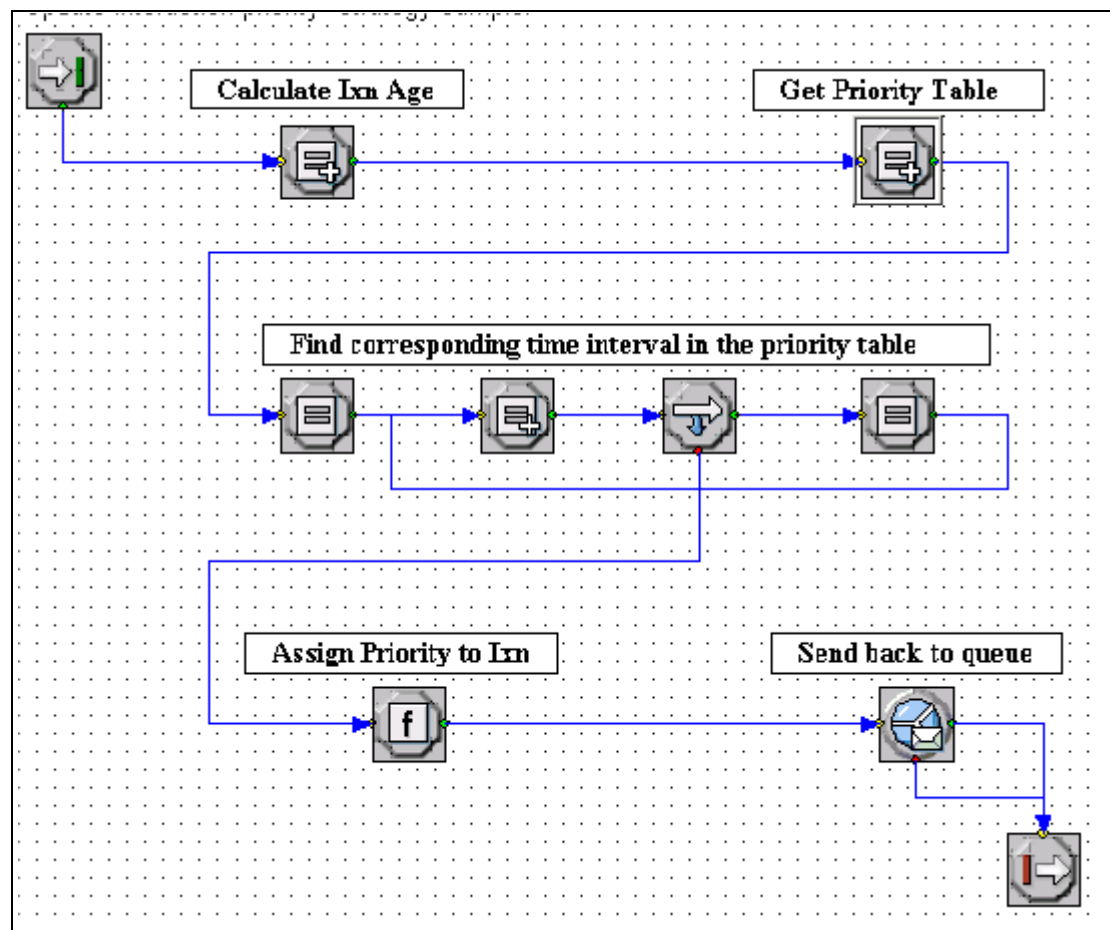


Figure 31: Sample Strategy

Use the Transaction object for storing priority adjustment rules. [Figure 32](#) shows a sample with different adjustment rules for different Customer Segments.

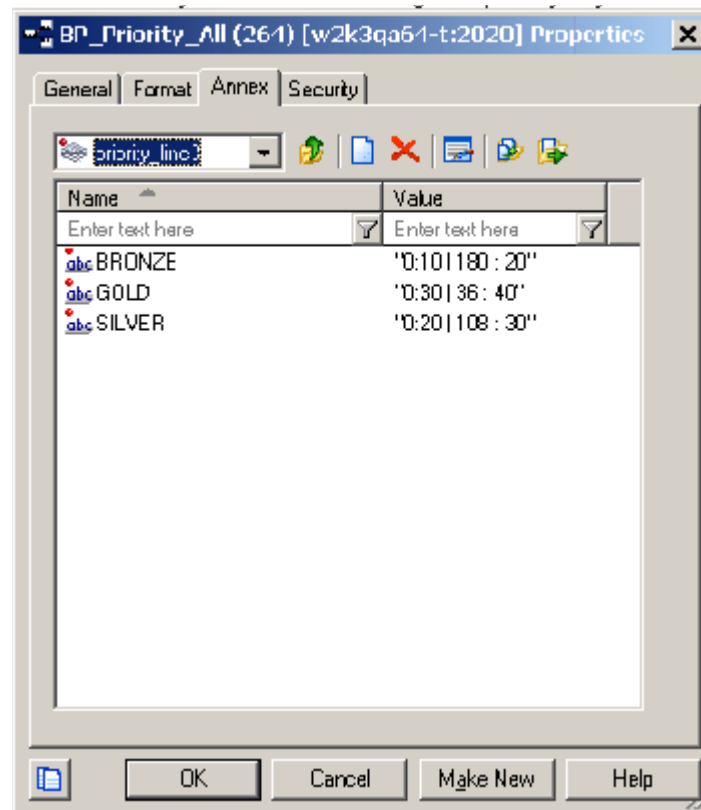


Figure 32: Transaction Object Storing Priority Adjustment Rules

Note: If you plan to use age of interaction instead of its time in queue, let URS know about that via the strategy when submitting an interaction of any media type for the first time.

Recommended Settings

Service objective, as used in the Recommended Settings table below, is the time objective to service a voice interaction.

[Table 1](#) gives recommended settings to both intelligently route voice interactions and achieve business-priority routing based on contact center characteristics. For detailed information on the objects, functions, and options in the Configuration column of [Table 1](#), see the *Universal Routing 7.6 Reference Manual*.

Table 1: Recommended Settings

Contact Center Characteristic	Applicable For Voice / MM		Configuration	How Selection Is Made
Interactions queued by FIFO.	X	X	<ul style="list-style-type: none"> No special setting required. 	
Route based on customer segmentation indicated by priority setting. Normally number of customer segments is small (of 3-4* levels).	X	X	<ul style="list-style-type: none"> Use function Priority or SetVQPriority as needed. 	Interaction with the highest priority will be selected. Among equal priorities interaction will be selected randomly.
Route based on combination of: <ul style="list-style-type: none"> Interactions queued by FIFO. Competing interaction is evaluated by service objective based on customer segment. Have more than 4 levels of customer segmentation.	X	X	<ul style="list-style-type: none"> First set up Objective Tables in Configuration Layer. Then use function FindServiceObjective to associate interactions with predefined business attributes and predefined service objective. Or use the MultiAttach object to override the predefined service objective. Set option <code>use_service_objective</code> to true. 	Interaction with the highest risk factor in service objective based on current wait time will be selected.
Route based on combination of: <ul style="list-style-type: none"> Interactions queued by FIFO. Contact center staffs queues unevenly and agents are shared among these queues. 	X		<ul style="list-style-type: none"> Use function PriorityTuning with parameter UsePrediction set to true. 	Interaction with the highest risk factor in service objective based on predicted wait time will be selected.

Table 1: Recommended Settings (Continued)

Contact Center Characteristic	Applicable For Voice / MM		Configuration	How Selection Is Made
Route based on combination of: <ul style="list-style-type: none"> Interactions queued by FIFO. Business process and call flow requires many transfers/collaborations. 	X	X	<ul style="list-style-type: none"> Use function PriorityTuning with parameter UseAgeOfInteraction set to true; might also set SetInteractionAge to true. 	Interaction with the oldest age will be selected.
Route based on combination of: <ul style="list-style-type: none"> Interactions queued by FIFO. Business process and call flow requires many transfers/collaborations. Contact center staffs queues unevenly and agents are shared among these queues. 	X		<ul style="list-style-type: none"> Use function PriorityTuning with parameter UseAgeOfInteraction to true; might also set function SetInteractionAge to true. Use function PriorityTuning with parameter UsePrediction set to true. 	Interaction with the highest sum of age plus predicted wait time will be selected.
Route based on combination of: <ul style="list-style-type: none"> Interactions queued by FIFO. Uneven staffing among queues. Competing interaction is evaluated by service objective based on customer segment. 	X		<ul style="list-style-type: none"> Use function PriorityTuning with parameter UsePrediction set to true. First set up Objective Tables in Configuration Layer. Then use function FindServiceObjective to associate interactions with predefined business attributes and predefined service objective. Or use the MultiAttach object to override the predefined service objective. Set option use_service_objective to true. 	Interaction with the highest risk factor in service objective based on predicted wait time will be selected.

Table 1: Recommended Settings (Continued)

Contact Center Characteristic	Applicable For Voice / MM		Configuration	How Selection Is Made
Route based on combination of: <ul style="list-style-type: none"> Interactions queued by FIFO. Business process and call flow requires many transfers/collaborations. Competing interaction is evaluated by service objective based on customer segment. 	X		<ul style="list-style-type: none"> Use function PriorityTuning with parameter UseAgeOfInteraction to true; might also set function SetInteractionAge to true. First set up Objective Tables in Configuration Layer. Then use function FindServiceObjective to associate interactions with predefined business attributes and predefined service objective. Or use the MultiAttach object to override the predefined service objective. Set option use_service_objective to true. 	Interaction with the highest risk factor in service objective based on age of interaction will be selected.
Route based on combination of: <ul style="list-style-type: none"> Interactions queued by FIFO. Business process and call flow requires many transfers/collaborations. Uneven staffing among queues. Competing interaction is evaluated by service objective based on customer segment. 	X		<ul style="list-style-type: none"> Use age of interaction. Use function PriorityTuning with parameter UsePrediction set to true. First set up Objective Tables in Configuration Layer. Then use function FindServiceObjective to associate interactions with predefined business attributes and predefined service objective. Or use the MultiAttach object to override the predefined service objective. Set option use_service_objective to true. 	Interaction with the highest risk factor in service objective based on predicted wait plus age of interaction will be selected.

Table 1: Recommended Settings (Continued)

Contact Center Characteristic	Applicable For Voice / MM		Configuration	How Selection Is Made
Route based on combination of: <ul style="list-style-type: none"> • Priority of customer segmentation. • Competing interaction is evaluated by service objective based on customer segment. 	X	X	<ul style="list-style-type: none"> • Use function Priority or SetVQPriority as needed. • First set up Objective Tables in Configuration Layer. Then use function FindServiceObjective to associate interactions with predefined business attributes and predefined service objective. Or use the MultiAttach object to override the predefined service objective. Set option use_service_objective to true. 	Interaction with the highest priority will be selected. Among equal priorities, the interaction with the highest risk factor in service objective based on current wait time will be selected.
Route based on combination of: <ul style="list-style-type: none"> • Priority of customer segmentation. • Contact center staffs queues unevenly and agents are shared among these queues. 	X		<ul style="list-style-type: none"> • Use function Priority or SetVQPriority as needed. • Use function PriorityTuning with parameter UsePrediction set to true. 	Interaction with the highest priority will be selected. Among equal priorities, the interaction with the highest predicted wait time will be selected.
Route based on combination of: <ul style="list-style-type: none"> • Priority of customer segmentation. • Business process and call flow requires many transfers/collaborations. 	X	X	<ul style="list-style-type: none"> • Use function Priority or SetVQPriority as needed. • Use function PriorityTuning with parameter UseAgeOfInteraction to true; might also set function SetInteractionAge to true. 	Interaction with the highest priority will be selected. Among equal priorities, the interaction with the oldest age will be selected.

Table 1: Recommended Settings (Continued)

Contact Center Characteristic	Applicable For Voice / MM		Configuration	How Selection Is Made
Route based on combination of: <ul style="list-style-type: none"> • Priority of customer segmentation. • Competing interaction is evaluated by service objective based on customer segment. • Contact center staffs queues unevenly and agents are shared among these queues. 	X	X	<ul style="list-style-type: none"> • Use function Priority or SetVQPriority as needed. • First set up Objective Tables in Configuration Layer. Then use function FindServiceObjective to associate interactions with predefined business attributes and predefined service objective. Or use the MultiAttach object to override the predefined service objective. Set option <code>use_service_objective</code> to true. • Add customer segmentation. • Set interaction predicted wait time. 	Interaction with the highest priority will be selected. Among equal priorities, the interaction with the highest risk factor in service objective based on predicted wait time will be selected.
Route based on combination of: <ul style="list-style-type: none"> • Priority of customer segmentation. • Competing interaction is evaluated by service objective based on customer segment. • Business process and call flow requires many transfers/collaborations. 	X	X	<ul style="list-style-type: none"> • Use function Priority or SetVQPriority as needed. • First set up Objective Tables in Configuration Layer. Then use function FindServiceObjective to associate interactions with predefined business attributes and predefined service objective. Or use the MultiAttach object to override the predefined service objective. Set option <code>use_service_objective</code> to true. • Use function PriorityTuning with parameter <code>UseAgeOfInteraction</code> to true; might also set function <code>SetInteractionAge</code> to true. 	Interaction with the highest priority will be selected. Among equal priorities, the interaction with the highest risk factor in service objective based on age of interaction will be selected.

Table 1: Recommended Settings (Continued)

Contact Center Characteristic	Applicable For Voice / MM		Configuration	How Selection Is Made
Route based on combination of: <ul style="list-style-type: none"> • Priority of customer segmentation. • Contact center staffs queues unevenly and agents are shared among these queues. • Business process and call flow requires many transfers/collaborations. 	X		<ul style="list-style-type: none"> • Use function Priority or SetVQPriority as needed. • Use function PriorityTuning with parameter UsePrediction set to true. • Use function PriorityTuning with parameter UseAgeOfInteraction to true; might also set function SetInteractionAge to true. 	Interaction with the highest priority will be selected. Among equal priorities, the interaction with the highest sum of age plus predicted wait time will be selected.
Route based on combination of: <ul style="list-style-type: none"> • Priority of customer segmentation. • Contact center staffs queues unevenly and agents are shared among these queues. • Business process and call flow requires many transfers/collaborations. • Competing interaction is evaluated by service objective based on customer segment. 	X		<ul style="list-style-type: none"> • Use function Priority or SetVQPriority as needed. • Use function PriorityTuning with parameter UsePrediction set to true. • Use function PriorityTuning with parameter UseAgeOfInteraction to true; might also set function SetInteractionAge to true. • First set up Objective Tables in Configuration Layer. Then use function FindServiceObjective to associate interactions with predefined business attributes and predefined service objective. Or use the MultiAttach object to override the predefined service objective. Set option use_service_objective to true. 	Interaction with the highest priority will be selected. Among equal priorities, the interaction with the highest risk factor in service objective based on age of interaction plus prediction will be selected.
* An arbitrary number.				

Note: For information on implementing the various selection criteria, see the *Universal Routing 7.5 Reference Manual*, specifically the chapters on Interaction Routing Designer objects, functions, and options.



Chapter

4

Cost-Based Routing

Note: This chapter presents a high-level overview of cost-based routing. For detailed information, as well as instructions on how to configure cost-based routing, refer to the *Universal Routing 7.6 Cost-Based Routing Configuration Guide*.

With cost-based routing (CBR), Universal Routing Server (URS) can:

- Calculate the cost of routing to any target based on configuration information, statistical values, and its own data.
- Use the cost of routing to target as additional target selection criteria.
- Use information contained in strategies to activate/de-active cost-based routing during target selection.
- Automatically attach to interactions information that can be used for cost-based routing reporting.

While the cost-based routing model described in this chapter is not media-specific, Universal Routing currently supports cost-based routing for voice (TDM or VOIP) interactions only.

The information in this chapter is divided among the following topics:

- [Infrastructure Versus Resource Cost, page 60](#)
- [Interaction Types, page 61](#)
- [Cost as an Agent Property, page 63](#)
- [Cost-Based Routing Reporting, page 64](#)
- [Features and Benefits of CBR, page 66](#)
- [Limitations, page 67](#)

Infrastructure Versus Resource Cost

In the case of CBR, URS considers the cost of routing to a target, comprised of the *Infrastructure* cost and/or the *Resource* cost, as additional selection criteria when choosing the right target.

Infrastructure Cost

Infrastructure cost is related to items such as switches, phones, transport layer, and so on. It is the cost to transfer an interaction from Site A to Site B, but does not include the cost of Resources. It can also be the cost of transferring interactions to Sites associated with Switches that can serve multiple locations. Or it can be the cost to transfer an interaction back to the Enterprise from a Site. You can also define Infrastructure cost for an interaction that is being sent from Switch A to an outsourcer whose Resources (agents, DNs, and so on) are not defined by Genesys (see “[Non-Configured DNs](#)” below). Infrastructure cost is associated with a Configuration Layer entity called a `Site` object.

Resource Cost

A Resource can be a human (agent, knowledge worker, employee, and so on defined as a `Person` object) or a non-human (IVR, IVR port, and so on) entity that belongs to the Enterprise or Network Provider.

Resources can also include outsourcers. For the purpose of CBR, there are two types of outsourcers:

- An outsourcer that is involved only in staffing (supplying agents). In this case, the Enterprise is responsible for supplying the Infrastructure. For this type of outsourcer, the Enterprise’s Genesys software can monitor the outsourcer’s Resources, such as DNs and agents.
- An outsourcer that manages everything from Infrastructure to staffing. For this type of outsourcer, the Enterprise’s Genesys software does not have the necessary visibility to monitor the outsourcer’s Resources (DNs, agents, and so on) because the outsourcer does not have the Genesys software installed. The routing targets are typically expressed as non-configured DNs (see “[Non-Configured DNs](#)” below).

Resource cost is represented by a Configuration Layer entity called a `Cost Contract` object.

Both contact center Infrastructure cost and Resource cost use the same cost unit (US cents, euros, or abstract units). It is the responsibility of the user to consistently use the same cost units when configuring a CBR solution.

Non-Configured DNs

Certain types of DN objects in the Configuration Database can have associated Cost Contract objects. However, if a particular DN is associated with a routing destination where the Genesys software is not installed, Stat Server cannot monitor the DN for the purpose of generating state and statistical information. In this case, the main usage for such a DN is to enable the routing of calls to a *non-monitored destination* (a Site where there is no Genesys software installed). This is a common practice for hosted vendors who route calls in load balancing mode to different Sites that might not be Genesys customers.

Interaction Types

Resource cost is represented in Configuration Layer by a Cost Contract object, which is comprised of Interaction Type (IT) contracts and Interaction Type (IT) records. Interaction Types for a Cost Contract object are different combinations of:

Media Type + Service Type + Customer Segment

Example Interaction Types:

voice + Service + Gold

voip + Sales + Silver

In effect, each Interaction Type record represents an Interaction Type contract. [Figure 33](#) shows an example Interaction Type record:

The screenshot shows a dialog box titled "Objective Table Record [test33:8070] Properties". It contains the following fields and values:

- Media Type:** voice
- Service Type:** Banking
- Customer Segment:** Gold
- Service Objective Goal:** 0
- Service Objective Delta:** 0
- IT Contract:** ITContract_Voice_Site1

At the bottom of the dialog are three buttons: OK, Cancel, and Help.

Figure 33: Example Interaction Type Record

Interaction Type Contracts

Genesys offers two kinds of processing for Interaction Type contracts:

1. **Variable rate**, which does not impose any volume commitment from the Enterprise. Since there is no volume commitment, the cost is typically higher than the volume rate discussed below.
2. **Volume-based**. Since there is a volume commitment, the negotiated cost can be a more of a “bargain” price.

Note: The same Cost Contract object can have a Variable Rate contract for one Interaction Type and a Volume contract for another Interaction Type. You indicate whether to use a Variable rate or Volume processing for an Interaction Type by the IT Contract object you specify in the Cost Contract object.

Variable Rate Contract

When creating a new IT Contract object, you can select Variable Rate Contract. If selected, you can then choose between Flat and Agent Hourly.

- For flat rate per interaction processing, you enter a value in dollars and cents.
- For agent hourly processing, you also enter a value in dollars and cents. URS calculates the variable rate based on the Average Handling Time statistic.

Volume Contract

When creating a new IT Contract object, you can also select Volume Contract. With a Volume contract, URS calculates the price of an interaction based on a Day Contract object.

Day Contract

A Day Contract object defines:

- A forecasted volume for each time interval (called a *volume period*).
- A base rate for each interaction in the volume period.
- Over and under penalties (if applied).

With Volume contracts, URS counts the number of interactions sent to every target during a specific interval. URS derives the cost of interactions by comparing these numbers with forecasted volumes during the same period.

- If the actual number of interactions routed within the current period is within the forecasted boundary, URS evaluates each potential routing destination by using a predefined base rate per interaction.
- If the actual number of interactions routed within the current period is over or under the forecasted boundary, URS includes overflow/underflow penalty cost information when it calculates the cost for each potential routing destination.

Note: Day Contracts do not apply to Variable-rate IT Contracts.

The end result of defining Interaction Types are records in a cost contract table read by URS when calculating the Resource cost of an interaction.

Cost as an Agent Property

Configuring a full-scale CBR solution may not always be the best approach. Deploying and maintaining a full-scale CBR solution can be a complex task. For example, some Sites may want only simple cost-based routing, not a cost-based routing solution. In such cases, Universal Routing provides a lighter alternative to a full-scale solution. You may wish to do this if:

- There is no need to define Cost Contracts for different Interaction Types.
- Agent cost is based on a flat rate per call.
- You do not plan to use Infrastructure cost.

Specifying Agent Cost in the Annex Tab

Figure 34 shows an example of how agent cost might look when specified in the Annex tab of the Person Properties dialog box.

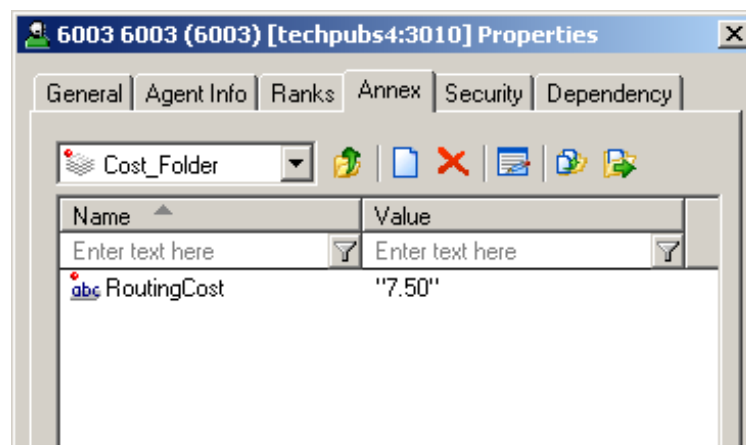


Figure 34: Person Properties, Annex Tab

Cost-Based Routing Reporting

Note: This release of cost-based routing does not supply any “out-of-the-box” cost-based routing reports. Instead you can configure Genesys ICON/Info Mart to capture sufficient data from Universal Routing to allow the building of CBR reports as a Genesys Professional Services engagement.

CBR Information Attached to Interactions

URS automatically attaches cost-based routing information to interactions when:

- The URS option `report_targets` is set to `true` (for information on this option, see the *Universal Routing 7.6 Reference Manual*).
- You are implementing Infrastructure and/or Resource cost.

The attached cost-based routing data is propagated into interaction-related event messages from:

- T-Server (for voice interactions). For information on T-Server Event messages, see *Genesys 7 Events and Models Reference Manual*.
- Interaction Server (for non-voice interactions).

Note: Note: This release of CBR supports voice and voip Media Types only).

Reporting Data Flow

When URS attaches CBR reporting information to interactions, the data flow for generating CBR reports is as follows:

- When configured to do so, Genesys Call Concentrator and ICON process these events and store interaction-specific details in their databases.
- When configured to do so, Genesys Info Mart batch processes use ICON databases as inputs for loading into a Genesys Info Mart database. For more information, see [“Special Note on Interaction Attached Data”](#) below.
- The reporting tool of your choice (for example, Hyperion) extracts data from Genesys Info Mart and Genesys Configuration Databases and lets you build custom reports as a Genesys Professional Services engagement.

[Figure 35](#) depicts this graphically.

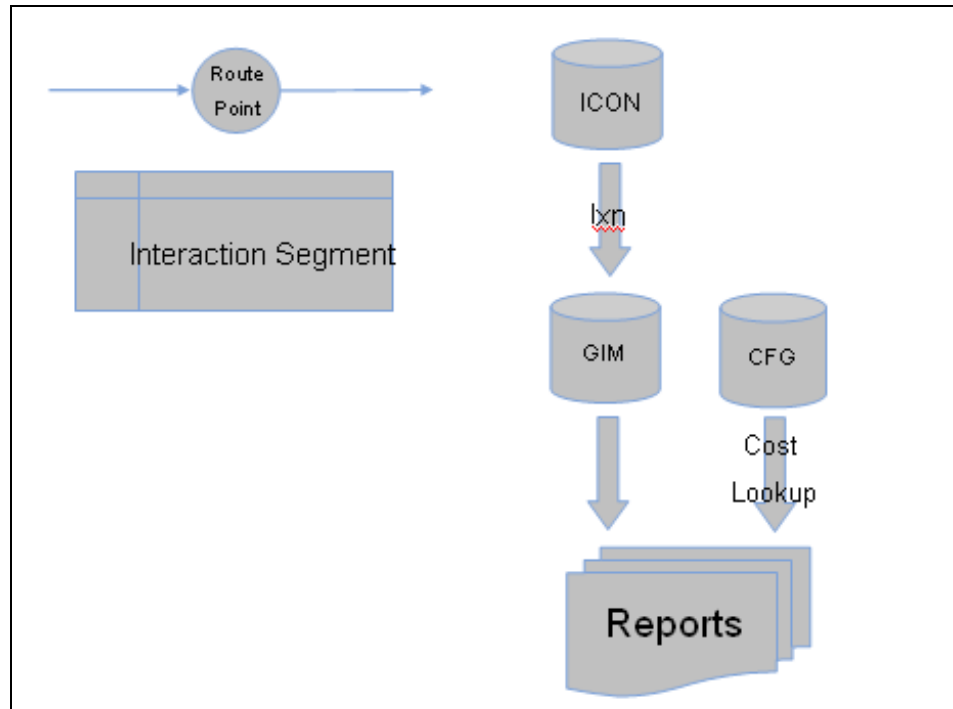


Figure 35: CBR Reporting Data Flow

Special Note on Interaction Attached Data

If default routing occurs, such as when the Switch handles an interaction instead of URS routing, attached data (such as reporting data) can become outdated. This occurs for all types of reporting based on interaction attached data, not just cost-based data. For this reason, Genesys recommends that you work with Professional Services to handle this situation for purposes of reporting.

- You may wish to set the URS option `default-destination` to one that can be monitored by Genesys.
- You can also use the `report_reasons` option, which enables you to add information (database identifier for a Reason code) to interactions regarding the reason for routing. The primary intent is for reporting purposes, to distinguish a URS routing attempt from default routing performed by the switch, such as during cost-based routing.

For information on these options, see the *Universal Routing 7.6 Reference Manual*.

Features and Benefits of CBR

The features of a CBR routing solution are as follows:

- Enables you to define two types of interaction cost: Resource cost and Infrastructure cost. Together, Resource cost and Infrastructure cost comprise the total routing cost of an interaction. You can also define Infrastructure cost for an interaction being sent to a Site (such as an outsourcer) whose Resources (Persons, DNs, and so on) are not defined by Genesys (non-monitored destination).
- To define Infrastructure cost, uses a Configuration Layer entity called a `Site` object to define Sites (remote and otherwise) that URS can potentially route to. Each `Site` object can have its own `Configuration Units` (such as `Persons` (agents), `Switches`, and so on) and references to other Sites that can potentially be routed to (including the transfer cost to each Site).
- You can configure CBR solutions of varying complexity:
 - Level 1: Define Infrastructure cost only for Sites to which URS can potentially route.
 - Level 2: Define Resource cost only, which is represented in the Configuration Layer by a `Cost Contract` object. A `Cost Contract` can use an agent hourly rate, a flat rate per interaction, or a volume-based rate.
 - Full-Scale: Use a combination of Level 1 and Level 2.

You can also define `Cost` as an agent property in the Configuration Layer.
- You can assign Resource cost to various objects in the Configuration Layer: `Person`, `AgentGroup`, `Place`, `PlaceGroup`, `DN` (certain types), `Site`, and `Tenant`.
- Gives the flexibility of defining Resource cost for different Interaction Types.
- For each Interaction Type defined, you can specify a `Dominant Optimization Factor`. This factor controls whether URS should use `Cost` as additional selection criteria or whether it should route based on `Performance/Service Objective` (minimum/maximum value of a statistic).
- You have the option of defining Resource cost for different Interaction Types based on interaction volume (`Volume Contract`) or using a variable rate (`Variable Rate Contract`). If you select variable rate processing, you can specify a flat rate per interaction or use an agent hourly rate/average handling time.
- If you use a `Volume Contract`, you then define one or more `Day Contracts`. A `Day Contract` forecasts interaction volume for a specific day, such as a holiday, day of the week, or a specific day of the year. For each `Day Contract`, you forecast interaction volume for different volume periods during the day, define a base rate per interaction in each volume period, and penalties for interaction volume over or under the forecast.

- When a Volume Contract is used, URS implements a special pacing and regulating algorithm to evenly distribute the number of interactions sent to a routing destination.
- Existing Configuration Manager objects are extended to support Resource cost: `Objective Table` is extended to represent Cost Contract. `Statistical Table` is extended to represent IT Contract. `Statistical Day` is extended to represent Day Contract. `Business Attribute` is extended to represent IT Record.
- You can activate CBR via a function or an IRD predefined statistic, `RStatCost`.
- Universal Routing provides sample strategy files that demonstrate how to activate and configure cost-based routing.
- Genesys ICON/Info Mart can be configured to capture sufficient data to allow the building of CBR reports as a Professional Services engagement.

Limitations

For information on the limitations of a cost-based routing solution, see the *Universal Routing 7.6 Cost-Based Routing Configuration Guide*.

Note: CBR is not supported in a Federated environment in which Resources are shared across Enterprises, as described in the *Framework 7.5 Federation Proxy Deployment Guide*.



Chapter

5

Share Agent By Service Level Agreement Routing

Note: The routing model described in this chapter is not media-specific. It is applicable to both non-voice (Open-Media) and voice (TDM or VOIP) interactions.

Share agents by *service level agreement* (SLA) routing (also called *conditional routing*) enables a business user that manages multiple business lines to define the triggering conditions and constraints that allow agents to be shared among business lines. Applicable to all media types, this type of routing can work in concert with cost-based routing (see [page 59](#)) and business-priority routing (see [page 39](#)).

Note: See [page 95](#) for important information on routing models incompatible with SLA routing.

The information in this chapter is divided among the following topics:

- [Benefits and Features, page 70](#)
- [Problem Addressed By Solution, page 71](#)
- [Goal of Solution, page 71](#)
- [Use Case, page 72](#)
- [Implementing SLA Routing, page 73](#)
- [List Objects in SLA Routing, page 83](#)
- [Trigger Conditions Supported, page 93](#)
- [Multi-Tiered Design, page 94](#)
- [Limitations, page 95](#)

Benefits and Features

Following are the major features and benefits of SLA routing:

- Allows you to perform conditional routing without the need to configure “looping” in complex strategies.
- Allows you to define triggering conditions for borrowing agents from other business lines as well as the conditions that apply to the lending business line. You do this by constructing a *threshold expression* as described on [page 76](#). A single threshold expression contains both the borrowing and lending conditions.
- See [page 93](#) for detail on the types of triggering conditions supported. In summary, trigger conditions contained in a threshold expression can be stated as:

The number of interactions of a specific media type currently in queue. This number can also be stated as less than or equal to a user-defined number.

A requirement to always have X number of agents ready at any time, including X number of agents skilled in a particular media type ready at any time.

The estimated wait time for a queue exceeding a user-defined number of seconds or minutes.

A comparison of an IRD predefined statistic or a custom statistic to a user-defined value.

A comparison to a service level objective; for example, a service level objective of X percent of calls answered within Y number of seconds.

A comparison of data received from an external enterprise system to a user-defined value.

The skill criteria for the shared agents from the lending business line. You can use a multi-tier mode to specify how long to wait before extending to the next tier of shared agents from another lender business line. You can also specify how long to wait before switching back to the previous tier.

From an interface outside of a routing strategy, such as conditions contained in an IRD list object or a Configuration Manager object. When you change a triggering condition from outside the strategy (including agent skills), the change affects existing calls waiting for the business line and new incoming calls.

Any combination of the above using the relationship operators defined on [page 94](#).

- IRD supplies the following threshold functions to facilitate the use of threshold expressions:
 - data for routing conditions based on statistics.

`acfgdata` to return a numeric value from a Configuration Layer Application object.

`callage` to return the age of an interaction in seconds.

`lcfgdata` to return a numeric value from an IRD list object.

- URS routes interactions to targets only if both borrowing and lending conditions are met.
- Interactions waiting for the main business line can be routed to skilled agents as the first choice.
- Once URS determines that lending conditions are no longer met, it revokes the agents' shared status so they can once again only handle interactions from their main business line.
- The Universal Routing 7.6 installation package provides sample strategies that demonstrate SLA routing. See "Implementing SLA Routing" on [page 73](#) for more information.

Problem Addressed By Solution

In certain contact center operation models where there are multiple business lines to manage, a supervisor manages the SLA for a specific business line and the group of agents staffed for it. With a service level agreement, a specific group of agents (bearing some other business skills) can sometimes help handle interactions from other business lines.

Previously, you could only specify overflow conditions from the main business line to agents in other business lines. After that, interactions were queued and delivered to the first agent that became available. In some cases, while occupied with an overflow interaction, a shared agent could sometimes be delayed in responding to interactions from their core business line, which should be the agent's main focus. This could affect performance (Average Speed of Answer, Average Handling Time, and so on) for the agent's core business line.

Goal of Solution

With SLA routing:

- You can define a specific set of activation conditions for the main business line to invoke shared agents (i.e., to borrow agents).
- You can also define the "guarding" conditions so that the shared agents eligible to receive interactions from non-primary business lines do not negatively impact their own business goals.

Below is an example use case for SLA routing.

Use Case

ACME is a company that provides credit card customer services to other companies. It has two main credit card customer services groups (business lines):

1. Customer services for VisaCard.
2. Customer services for MasterCard.

Each card group manager wants to meet their own service level objectives (e.g., number of calls waiting in queue and targeted average handling time per call).

- The VisaCard business line wants to borrow agents from the MasterCard business line only under certain conditions.
- The MasterCard business line only wants to lend agents to the VisaCard business line only if their lender conditions are met.

Borrowing Triggering Conditions

The VisaCard business line defines the triggering conditions to borrow agents from MasterCard as follows:

- If the VisaCard queue has more than 30 voice calls waiting in virtual queue and
- If the number of stolen card in VisaCard system exceeds 200.

Lending Triggering Conditions

The MasterCard business line defines the conditions to lend agent to VisaCard as follows:

- If the MasterCard queue has 0 calls waiting and two agents have the MasterCard skill level ≥ 5 and with an available voice channel.

URS will distribute VisaCard calls to agents whose primary responsibility is the MasterCard business line when when triggering conditions for *both the borrower and lender* are met.

Implementing SLA Routing

You can implement SLA routing using two methods. Both methods are implemented in a routing strategy using a threshold expression to state both borrowing and lending triggering conditions. The implementation methods are as follows:

1. “Method #1: Target Selection Object”

In the General tab of a Selection object in a routing strategy (which defines the routing targets) you can open a dialog box for building threshold expressions.

2. “Method #2: Function SetTargetThreshold”

You can associate threshold expressions with targets using function SetTargetsThreshold in a Function object within a routing strategy.

Note: You can use Method #1 and Method #2 simultaneously.

Method #1: Target Selection Object

Figure 36 shows the `sla2_sample` strategy supplied by Universal Routing.

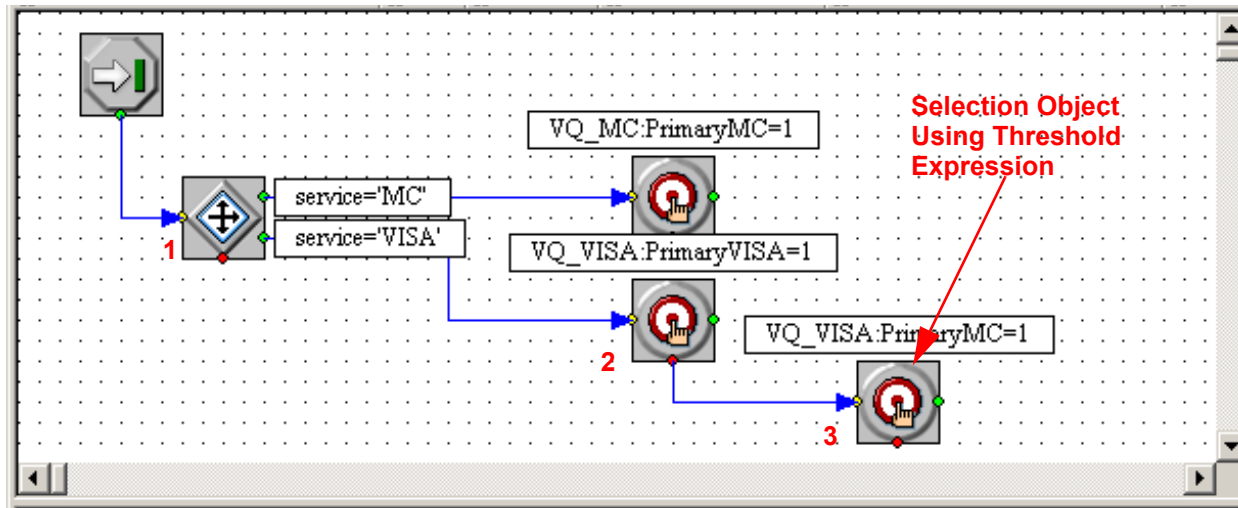


Figure 36: Strategy `sla2_sample`

The sample strategy contains a Selection object that uses a threshold expression.

Processing Flow

1. After the Entry object, the next object in Figure 36 on [page 73](#) is a Generic Segmentation object (1). It segments interactions to take different paths in the strategy based on the service requested. Assume that customers identify themselves via the IVR unit as MasterCard (“MC”) or a VisaCard (“VISA”) customers.
2. The remaining objects are all Routing (target) Selection objects.

[Figure 37](#) shows the Target Selection tab in the properties dialog box for the middle Selection object (2).

The dialog box titled "Selection properties" has three tabs: "General", "Busy", and "Target Selection". The "Target Selection" tab is active. It contains three main sections:

- Statistics:** Radio buttons for "Mini" (selected) and "Max". A "Name" dropdown menu is to the right.
- Targets:** Includes a "Clear Target" checkbox (checked), a "Timeout" dropdown set to "0" with "Sec" units, and a table.

	Type	Name	StatServer
1	Skill	PrimaryVISA=1	
- Virtual Queue:** Includes a "Use Virtual Queue" checkbox (checked), and dropdown menus for "Alias" (set to "VQ_VISA"), "Switch", and "Number".

At the bottom are "OK", "Cancel", and "Help" buttons.

Figure 37: Routing Target Selection Object, Target Selection Tab

Under Type in [Figure 37](#), Skill is selected. This indicates calls are being routed to agents based on a skill expression (agents having the PrimaryVISA skill where the skill level = 1). **Note:** Even though Clear Target is checked in the sample, you must uncheck this flag for this particular Target Selection object to make the sample workable.

3. If URS does not find any available agents meeting this criteria (if all agents are busy), the call goes out the bottom (error) port to the Routing Selection object marked with a “3” in Figure 36 on [page 73](#).

Note: This is the Selection object that demonstrates use of a threshold expression.

Double-clicking this Selection object opens a properties dialog box. The General tab contains the borrowing/lending conditions (see [Figure 38](#)).

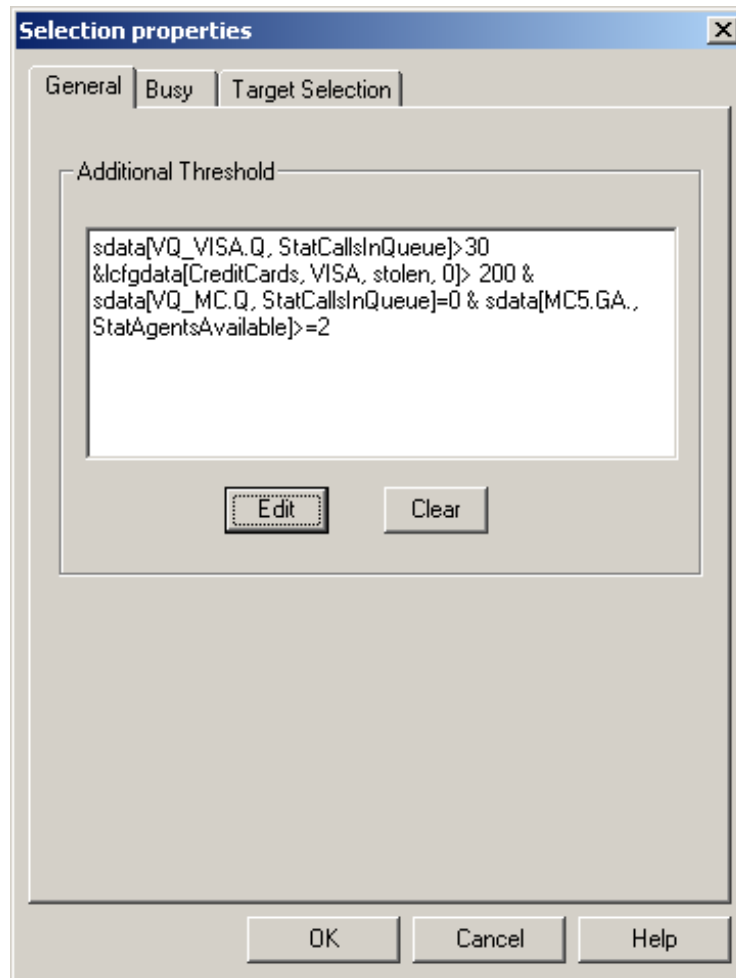


Figure 38: Selection Object, General Tab

Note: While you can enter the borrowing/lending conditions under Additional Threshold in the General tab, it is much easier to click the Edit button and use the Threshold Expression Properties dialog box (see [Figure 39](#)).

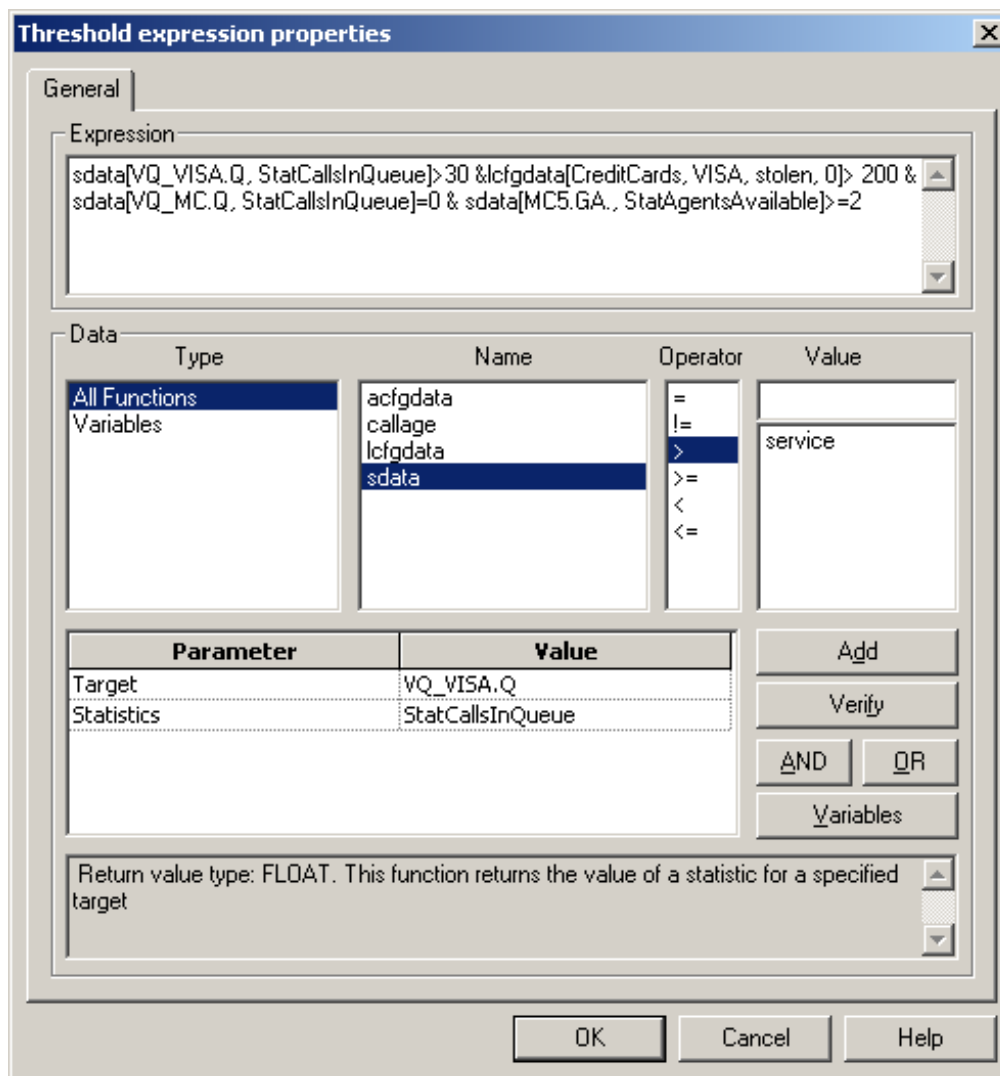


Figure 39: Threshold Expression Properties Dialog Box

Threshold Expression

A threshold expression is text string very similar to the regular expressions used in Generic Segmentation or If strategy-building objects, but uses the predefined threshold functions described on [page 77](#). In the example in [Figure 40](#), *sdata* and *lcfgdata* are the predefined threshold functions.

```
sdata[VQ_VISA.Q, StatCallsInQueue]>30 &lcfgdata[CreditCards, VISA, stolen, 0]> 200 &
sdata[VQ_MC.Q, StatCallsInQueue]=0 & sdata[MC5.GA., StatAgentsAvailable]>=2
```

Figure 40: Example Threshold Expression

Both the borrowing and lending conditions are defined in a single threshold expression (see [Figure 41](#)):

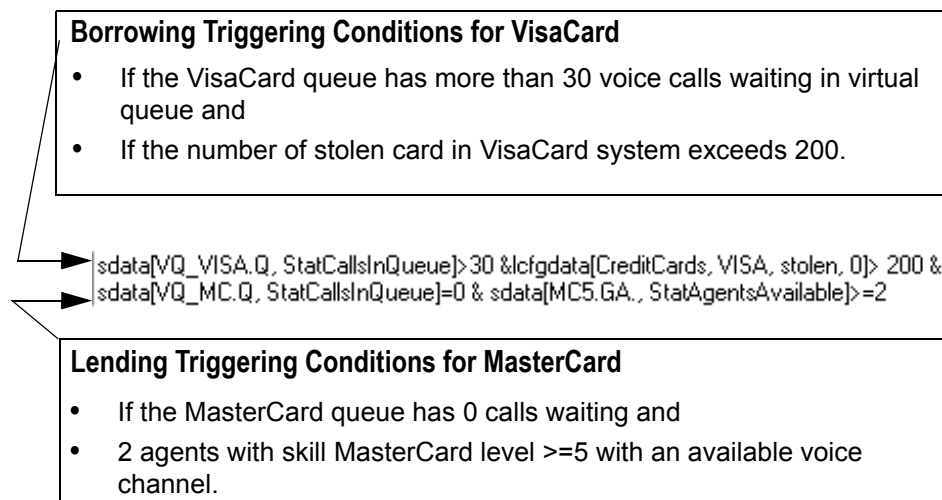


Figure 41: Example Threshold Expression Using sdata Function

URS will distribute VisaCard calls to the MasterCard group only when triggering conditions for both the borrower and lender are met. Operations can be performed on string/numeric constants, strategy variables, and functions. See “Trigger Conditions Supported” on [page 93](#) for more information.

An empty value in the General tab indicates that the target specified in the Target Selection tab has no routing conditions.

Predefined Threshold Functions

You can use the following functions in threshold expressions (all lowercase):
`sdata(target, statistic)`

Use this function to affect routing conditions based on statistics. Specify targets and statistics just like for the `SData[]` function described in the *Universal Routing 7.6 Reference Guide*. You can manually enter IRD predefined statistics, such as: `PositionInQueue`, `CallsWaiting`, and `InVQWaitTime`.

Examples:

```
sdata(Group2.GA, StatAgentsAvailable)>2
```

`acfgdata(Application name, folder, property, default value)`

Use this function to affect routing conditions based on external data stored in properties of Configuration Layer Application objects (`ApplicationConfigDATA`). Returns a numeric value for specified Application option. If an Application has no such option then the default value is returned.

Example:

```
sdata(Group2.GA, StatAgentsAvailable)>acfgdata(URS,
default, MinNumOfRdyAgents, 2)
```

callage

Use this function to return the age of an interaction in seconds. Use for time-based routing conditions, such as a call that can only be routed if it waits more than 60 seconds.

lcfgdata(List name, item, attribute, default value)

Use this function to affect routing conditions based on external data stored in IRD list objects. Returns a numeric value for a specified attribute of a list object's item (see Figure 48 on [page 83](#)). If a list object has no such item or attribute, the default value is returned. Works like `acfgdata`, but uses an IRD list object (`ListConfigData`) instead of an `Application`. Return value type: `FLOAT`. If you need a review of list objects, see the *Universal Routing 7.6 Reference Manual*.

Note: The above threshold functions are only for use in threshold expressions. IRD's `Function Properties` dialog box does not list them in the `Data` pane under `Type` (see Figure 44 on [page 81](#)).

Method #2: Function `SetTargetThreshold`

The second method for implementing SLA routing is through the strategy function `SetTargetThreshold`, which defines the statistical thresholds for borrowing and lending agents.

Parameters: `Target`: `STRING` (statistical object) or variable (representing a string for the target that the routing condition is imposed upon), such as a string for the target that can lend agents if all conditions are met. See Figure 44 on [page 81](#).

`Expression`: `STRING`. Statistical (threshold) expression representing a condition that must be true for the conditional routing to occur.

Note: Interactions can only be routed to the target if the expression resolves to a not zero (0) value.

Example Strategy

[Figure 42](#) shows the Universal Routing-supplied `sla1_sample` strategy, which implements the use case on [page 72](#) in a slightly different fashion.

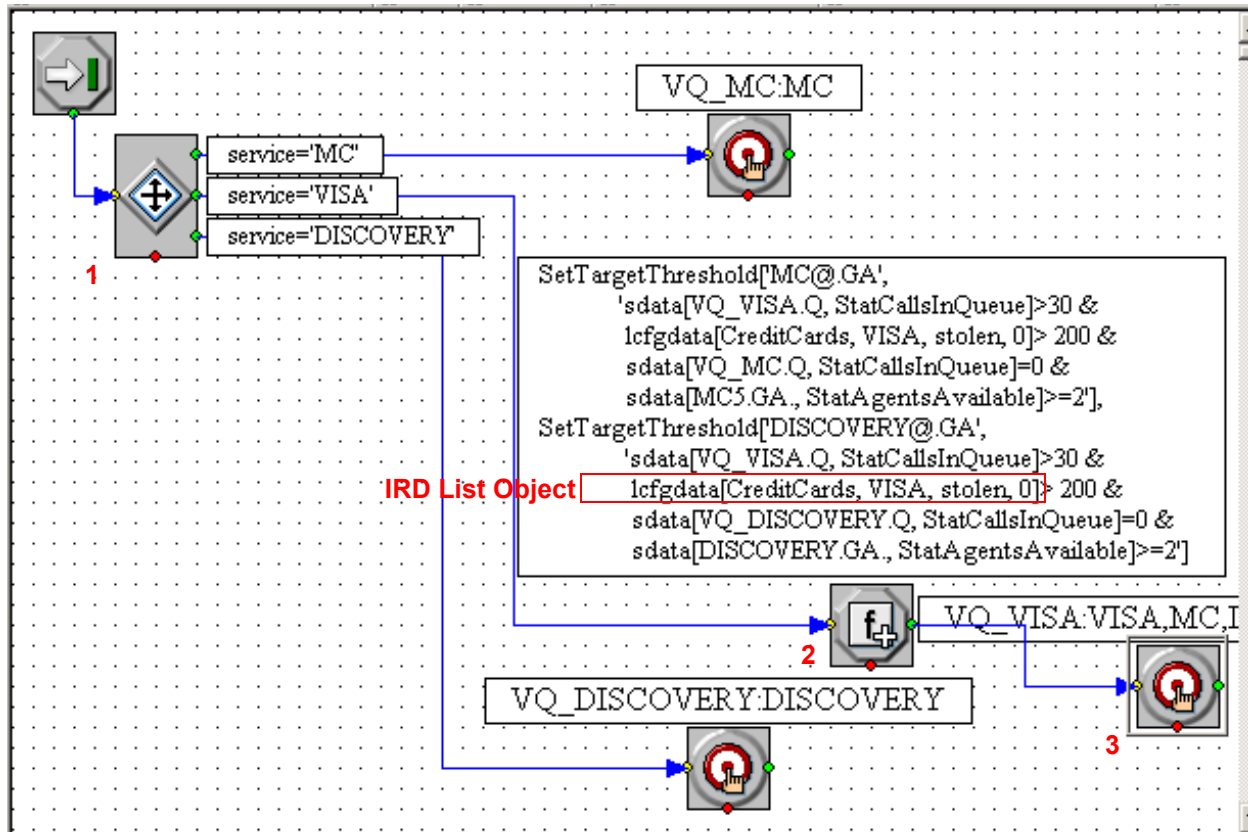


Figure 42: Strategy sla1_sample

This strategy uses the SetTargetThreshold function and a list object to contain routing conditions. **Note:** Only VISA services demonstrate the usage of SetTargetThreshold.

Strategy Assumptions

- MasterCard (MC) calls are served with any agent from Agent Group MC; the skill level is defined by skill MC.
- VisaCard (VISA) calls are served with any agent from Agent Group VISA; the skill level is defined by skill VISA.
- There is virtual group MC5 (MC5.GA in Figure 43 on [page 80](#)) in Configuration Manager, which is defined as containing agents with the MC skill ≥ 5 .
- No agents with $MC \geq 5$ are in VISA Agent Group.

Note: The use case requires getting statistics for agents with $MC \geq 5$. Stat Server can take a statistic only for objects defined in Configuration Manager so an Agent Group representing those $MC \geq 5$ agents is required.

- The number of stolen VISA cards are stored in a list object named `CreditCards` in item `VISA` under the key `stolen` (see Figure 49 on page 84).

Processing Flow

1. After the Entry object in Figure 42 on page 79, the next object (1) is a Generic Segmentation object. It segments interactions to take different paths in the strategy based on the requested service. Assume that customers identify themselves as MC, VISA, or DISCOVERY customers.
2. The middle port (`service=VISA`) directs interactions for VISA customers to a Multi Function object (2), which allows you to use multiple functions within one object. You can then specify conditions for borrowing from the MC Agent Group and conditions for borrowing from the DISCOVERY Agent Group. Figure 43 shows a partial view of the properties dialog box for the Multi Function object (2) in the strategy in Figure 42 on page 79.

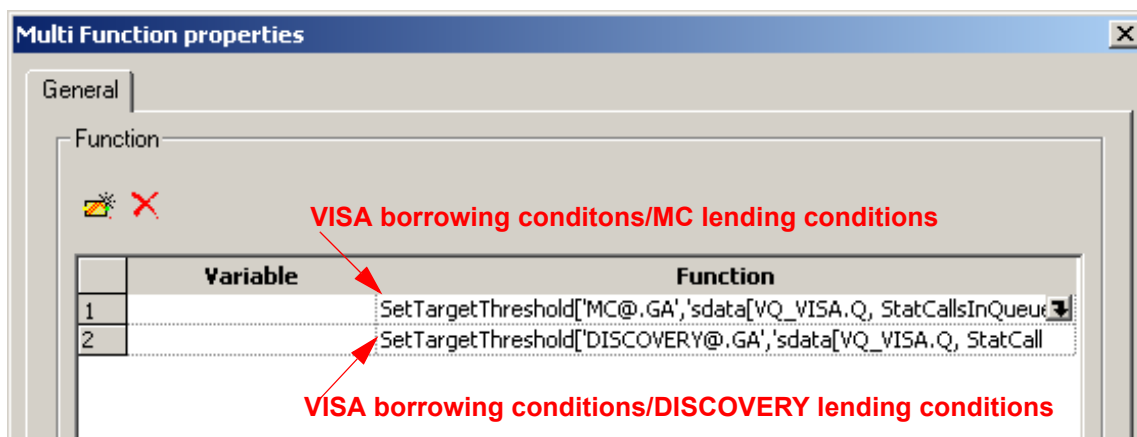


Figure 43: Multi Function Object Properties Dialog Box

Note that the Multi Function object is placed before the Routing Selection object in the strategy shown in Figure 42 on page 79. It specifies the borrowing/lending conditions for the virtual Agent Group (`VQ_VISA.Q`) that must exist in order to borrow agents from:

- The MC virtual Agent Group (`VQ_MC.Q`) and
- The DISCOVERY virtual Agent Group (`VQ_DISCOVERY.Q`)

As shown in Figure 43, clicking a row under the Function column displays a down arrow. Clicking the down arrow opens the Function Properties dialog box where the function name was selected and its parameters assigned.

Figure 44 shows the Function Properties dialog box for the first use of the `SetTargetThreshold` function in Figure 43.

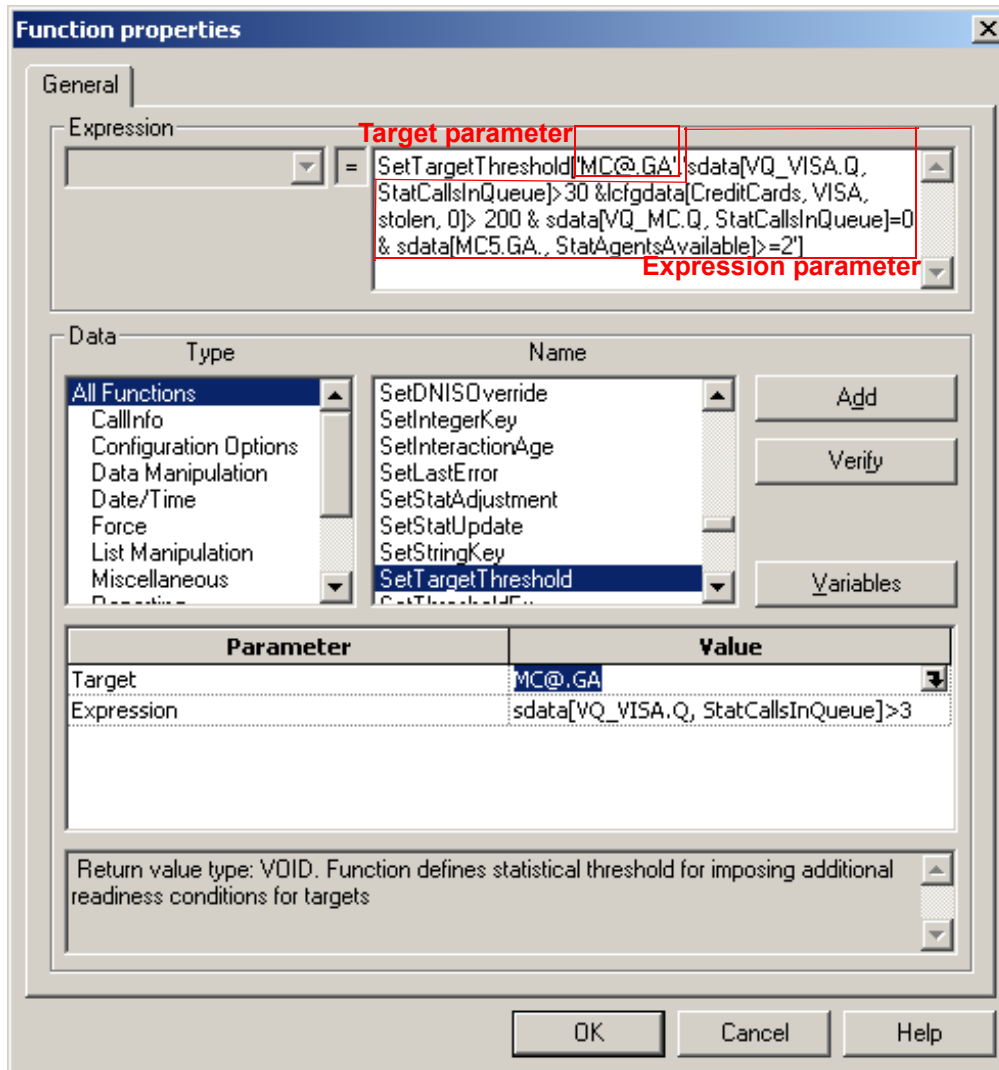


Figure 44: Function Properties Dialog Box

Target Parameter

In Figure 44, note the Target parameter of the SetTargetThreshold function. This is the target that the routing condition (specified opposite Expression under Value) is imposed upon. In this example, the target is the MC Agent Group, the first Agent Group that VISA can potentially borrow agents from.

You select the Target parameter by clicking under Value to display a down arrow. Clicking the down arrow opens a dialog box where you select the target Type, target Name, and Location. Figure 45 shows available selections for the Type field.

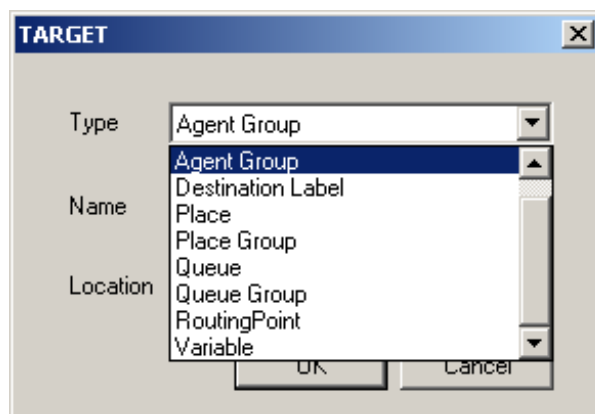


Figure 45: Target Dialog Box

Expression Parameter

The Expression parameter is where you construct a threshold expression as discussed previously on [page 76](#). Clicking opposite Expression under Value in Figure 44 on [page 81](#) displays a down arrow. Clicking the down arrow brings up the Threshold Expression Properties dialog box (see [Figure 46](#)).

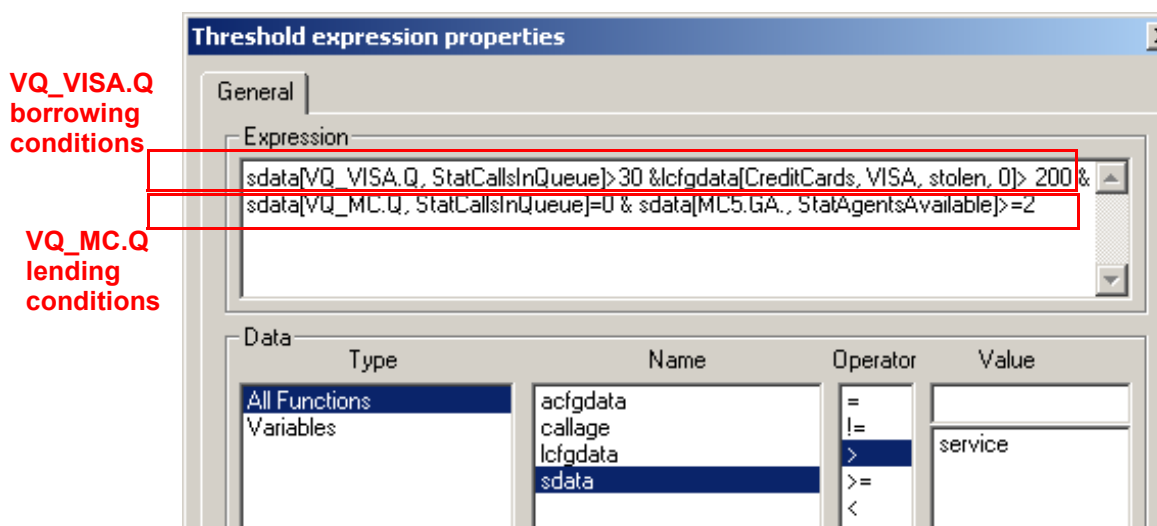


Figure 46: Threshold Expression Properties Dialog Box

Note: In order for the share to occur, both borrowing conditions (in this case, for the virtual Agent Group VQ_VISA.Q) and lending conditions (in this case, for the virtual Agent Group VQ_MC.Q) must be true.

List Objects in SLA Routing

You can construct expressions (borrowing and lending conditions) in a strategy dynamically from smaller parts. Parts of expressions (or an entire expression) can be stored outside of the strategy; for example inside list objects. The dynamic parts can be as simple as threshold values or as complex as sub-expressions. [Figure 47](#) shows the part of the previously discussed expression that uses a list object named `CreditCards`.



Figure 47: Predefined Threshold Function lcfdata

The `lcfdata` function (see [page 78](#)) specifies as a borrowing condition (see [Figure 47](#)) that the number of VISA stolen credit cards must be greater than 200. [Figure 48](#) shows Properties tab of the `CreditCards` list object used in the above expression.

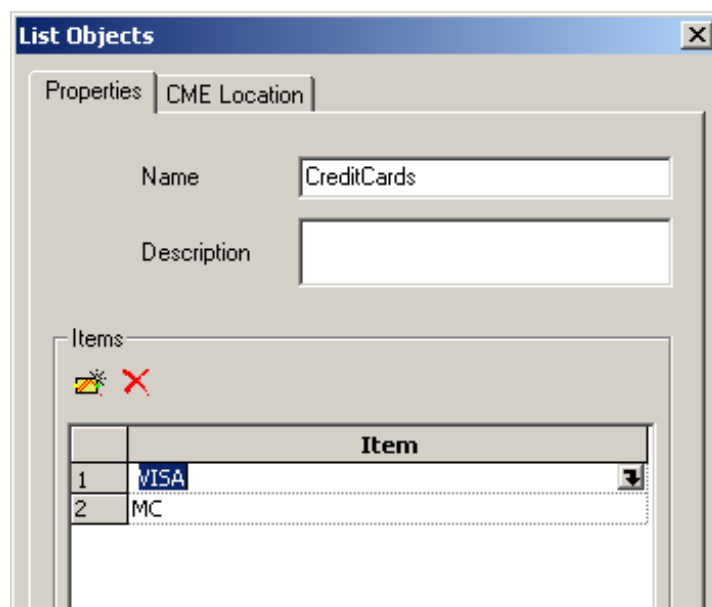


Figure 48: CreditCards List Object

Note: Universal Routing 7.6 supplies a sample list object called `CreditCardsSample`. For more information, see the *Universal Routing 7.6 Deployment Guide*.

Click the down arrow opposite VISA in Figure 50 on [page 84](#) to view the routing condition for the `lcfdata` portion of the threshold expression (see [Figure 49](#)).

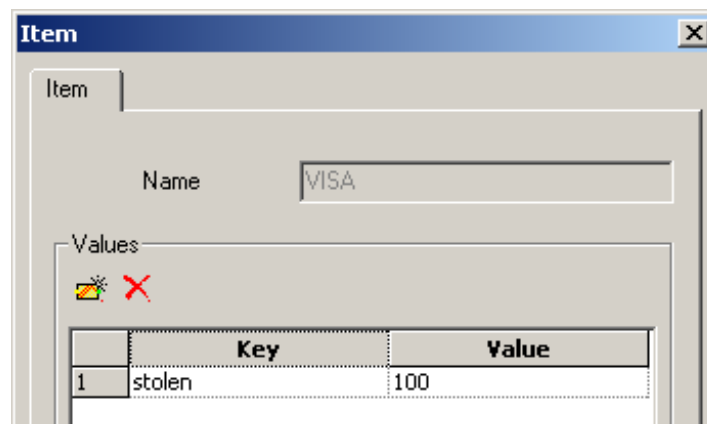


Figure 49: Routing Condition for VISA Agent Group

The next three figures review the chain of dialog boxes to get to the point where you specify the list object.

1. [Figure 50](#) shows the `SetTargetThreshold` function in the Multi Function Properties dialog box.

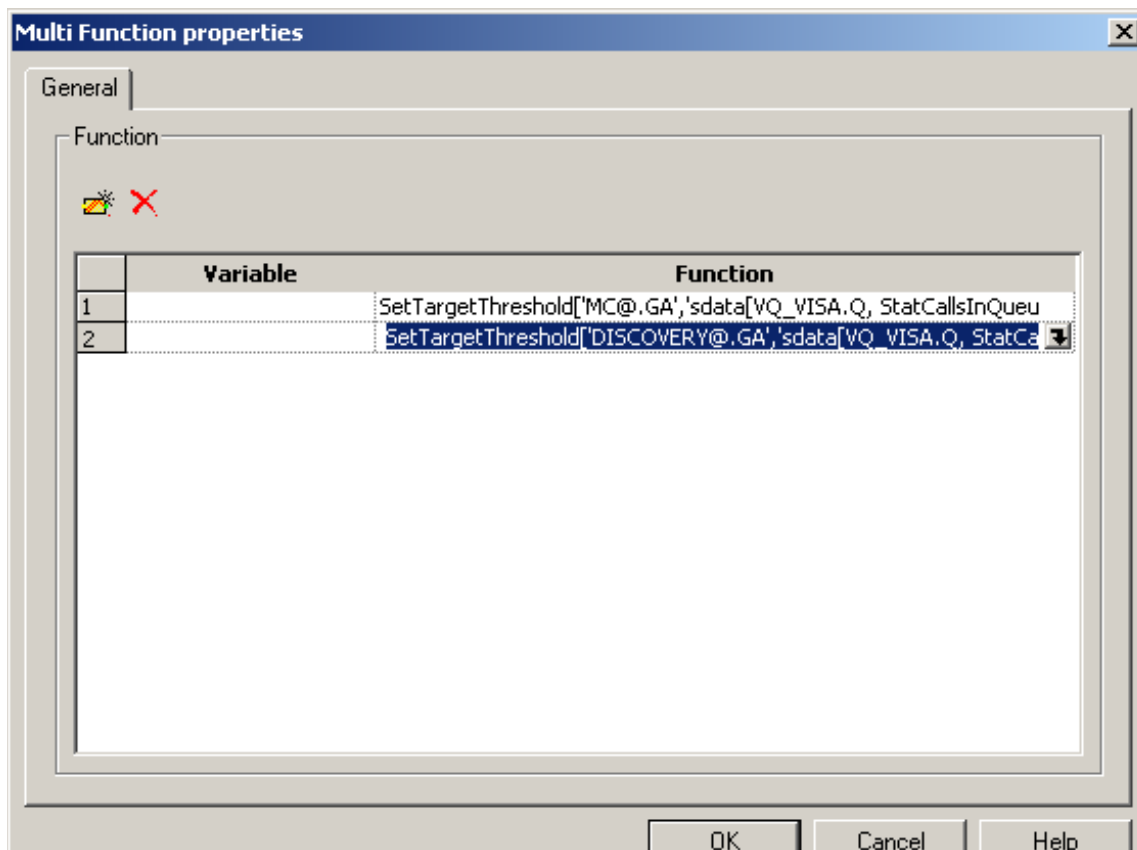


Figure 50: Multi Assign Object with SetTargetThreshold Function

The information in Figure 50 on page 84 was previously entered in the Function Properties dialog box shown in Figure 51 on page 85.

- Clicking the down arrow in Figure 50 opens the Function Properties dialog box where you entered the SetTargetThreshold function and its parameters (see Figure 51).

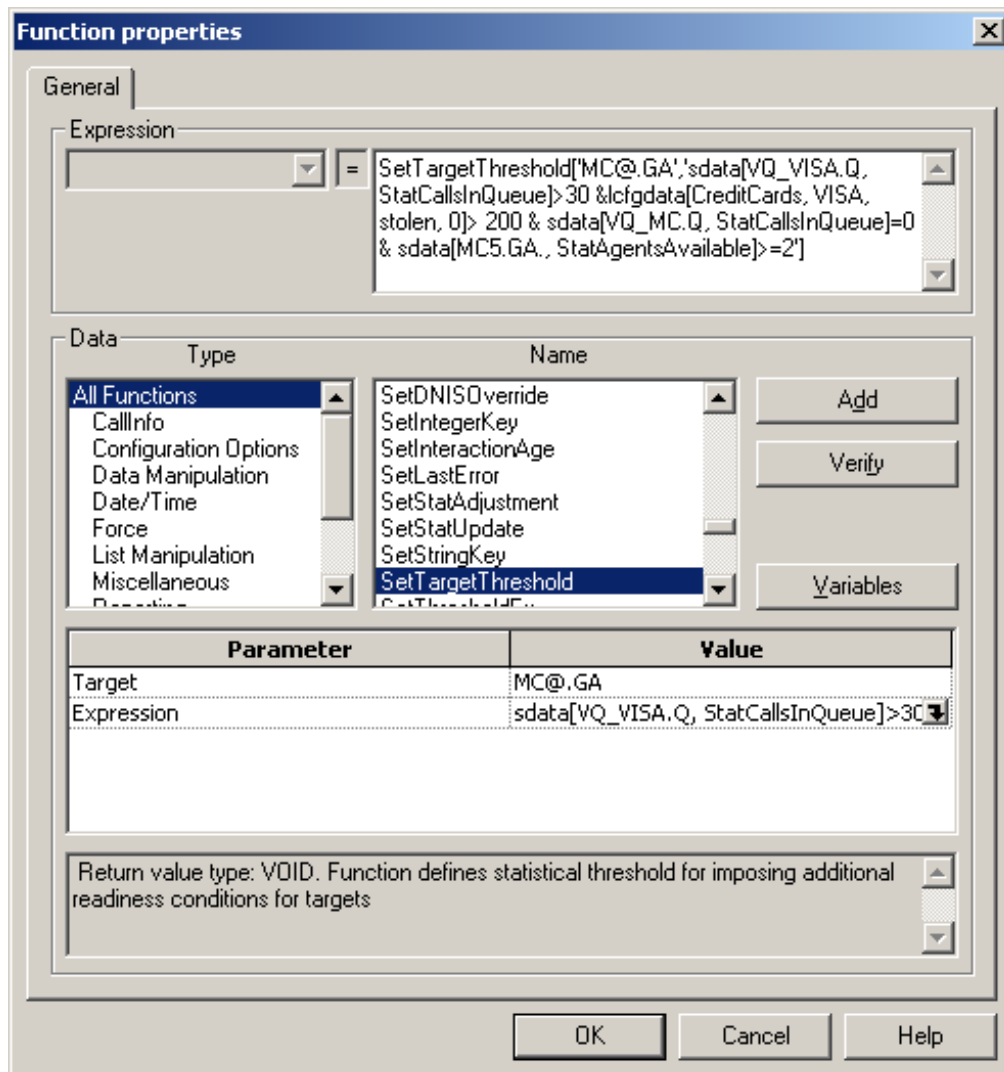


Figure 51: Function Properties, Target and Expression Parameters

- Clicking the down arrow opposite Expression in Figure 51 opens the dialog box where you entered the threshold expression, which specifies the list object name and parameters.
 - Figure 46 on page 82 shows the completed expression in the Threshold Expression Properties dialog box.
 - Figure 52 shows the dialog box after entering only the lcfdata part of the expression, where the list object (CreditCards) and its parameters are specified.

Threshold expression properties

General

Expression

sdata[VQ_VISA.Q, StatCallsInQueue]> 30 & lcfqdata[CreditCards,VISA,stolen,0] > 200

Data

Type	Name	Operator	Value
All Functions	acfgdata	=	200
Variables	callage	!=	service
	lcfqdata	>	
	sdata	>=	
		<	
		<=	

Parameter	Value
list	CreditCards
item	VISA
attribute	stolen
default	0

Add

Verify

AND OR

Variables

Return value type: FLOAT. The function returns numeric value for specified attribute of list's item. If list has no such item or attribute then default value will be returned

Figure 52: List Parameters in Threshold Expression Properties

Sample Subroutine and List Object

Universal Routing supplies a sample subroutine called `servicelevelagreement_sample`. It uses a list object (`businesslines_sample`) to contain a larger subset of routing information than that contained in the `CreditCards` list object previously discussed.

Subroutine Context

Assume that an IVR has identified customers as wanting information on the MC, VISA, or DISCOVERY business line, the requested business line information has been passed to the calling strategy, the strategy has segmented interactions to take different paths based on the requested business line. Also assume that all agents serving the requested business line are busy. When SLA routing is implemented, URS can borrow agents from other business lines.

Figure 53 shows the `servicelevelagreement_sample` subroutine.

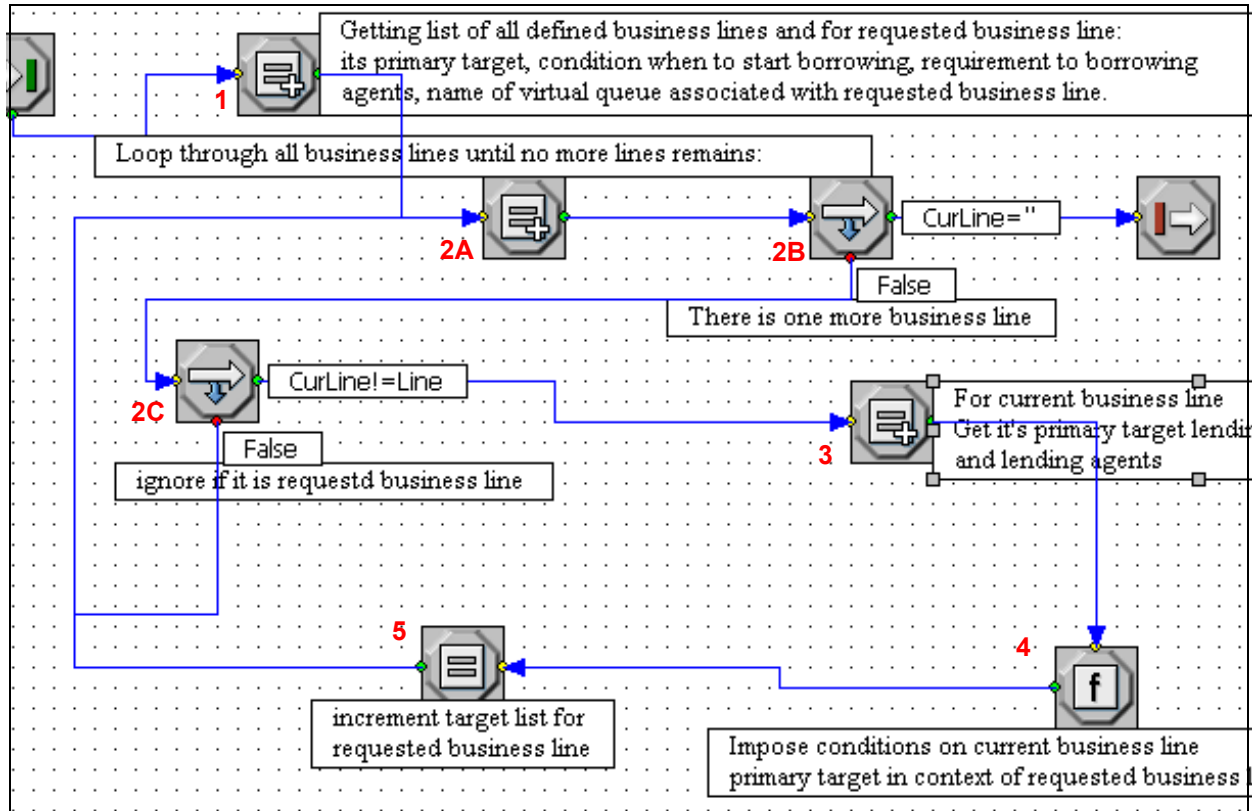


Figure 53: Subroutine servicelevelagreement_sample

Processing Flow

1. After the Entry object, the next object in Figure 53 is a Multi Assign object (1). It retrieves all defined business lines from a list object. For the business line requested by the strategy calling the subroutine, it gets:
 - The requested business line's primary target.
 - Conditions when to start borrowing.
 - Requirements for lending agents.
 - Name of virtual queue associated with the requested business line.
 Data retrieved is written to variables.

Figure 54 shows the properties dialog box for the Multi Assign object (1).

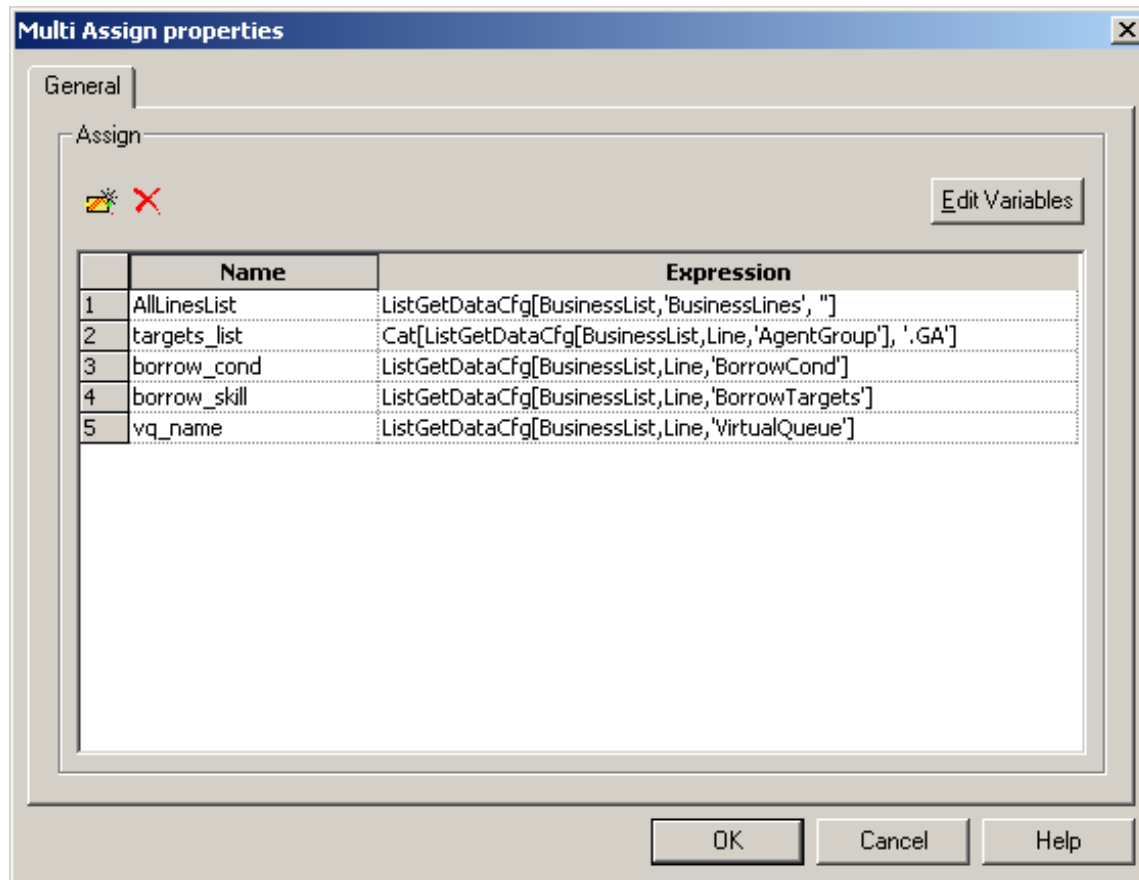


Figure 54: Multi Assign Object 1

In the Multi Assign Properties dialog box shown in [Figure 54](#), function ListGetDataCfg extracts various pieces of information from a list object named BusinessList and writes the information to the variables listed under Name.

- The AllLinesList variable holds the names of business lines.
- The targets_list variable holds the names of Agent Group targets that can be routed to. The Cat function concatenates strings returned by ListGetDataCfg (list object name, item, key).
- The borrow_cond variable holds borrowing conditions for each business line's Agent Group.
- The borrow_skill variable holds the skills that an agent to be borrowed must possess.
- The vq_name variable holds the virtual queues associated with each business line.

[Figure 55](#) shows the properties dialog box for the BusinessList list object.

List Objects

Properties | CME Location

Name: BusinessList

Description: sample of business lines infrastructure

Items

	Item
1	VISA
2	MC
3	DISCOVER
4	BusinessLines

Figure 55: Sample List Object, Properties Tab

Note: The BusinessList list object in [Figure 55](#) is the same as the businesslines_sample list object supplied by Universal Routing.

Click the down arrow opposite VISA to see the routing information stored in the list object for the VISA Agent Group (see [Figure 56](#)).

Item

Item

Name: VISA

Values

	Key	Value
1	AgentGroup	VISA
2	BorrowCond	sdata[VQ_VISA.Q, StatC
3	BorrowTargets	VISA_SKILL > 0
4	LendCondition	sdata[VQ_VISA.Q, StatC
5	LendTargets	VISA_SKILL < 5
6	VirtualQueue	VQ_VISA

Figure 56: VISA Agent Group Routing Information

Note: The same keys shown in Figure 56 on [page 89](#) exist for the MC and DISCOVER Agent Groups in Figure 55 on [page 89](#).

Table 2 lists each Key in Figure 56 on [page 89](#) and describes its value.

Table 2: Business Line Properties

Key	Value
AgentGroup	Name of real or virtual group of agents responsible for primary task of serving the business line.
BorrowCond:	Threshold expression defining borrowing conditions. In Figure 56 on page 89 , opposite BorrowCond, the entire value is: <code>sdata[VQ_VISA.Q, StatCallsInQueue]>30 & lcfgdata[CreditCards, VISA, stolen, 0]> 200</code>
BorrowTargets:	Skill expression defining agents to be borrowed from other business lines.
LendCondition	Threshold expression defining lending conditions. In Figure 56 on page 89 , opposite LendCondition, the entire value is: <code>sdata[VQ_VISA.Q, StatCallsInQueue]=0 & sdata[VISA.GA, StatAgentsAvailable]>=2</code>
LendTargets	Skill expression defining requirements for agents that other business lines can borrow.
VirtualQueue	Virtual queue associated with business line.

Processing Flow Continued

This section continues the `servicelevelagreement_sample` processing flow started on [page 87](#).

- Objects 2A, 2B and 2C in the `servicelevelagreement_sample` subroutine shown in Figure 53 on [page 87](#) cause URS to loop through the list object (`BusinessList`) until all business line information is stored in variables (see Figure 54 on [page 88](#)). If the current business line being read from the list object is not the business line requested by the customer, the interaction goes out to green port to Object 3.
- Object 3 in Figure 53 on [page 87](#) is another Multi Assign object. For the current business line being evaluated to see if it can lend agents, URS gets the following from the list object and write the information to variables:
 - Agent Group primary target (`CurTarget`)
 - Lending conditions that must be met (`Lend_cond`)
 - Skills that agents to be lent/borrowed must have (`Lend_skill`).

[Figure 57](#) shows the properties dialog box.

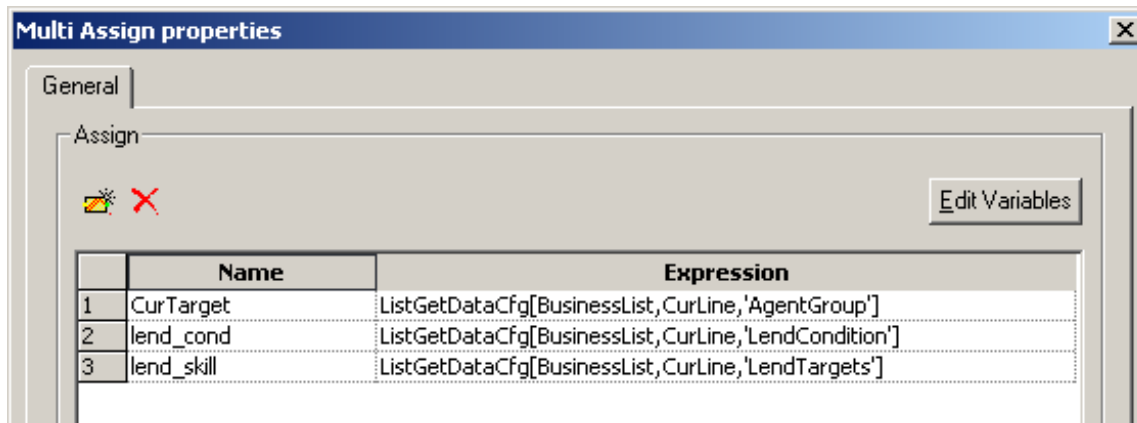


Figure 57: Multi Assign Properties 3

4. Object 4 in Figure 53 on [page 87](#) is a Function object (see [Figure 58](#)).

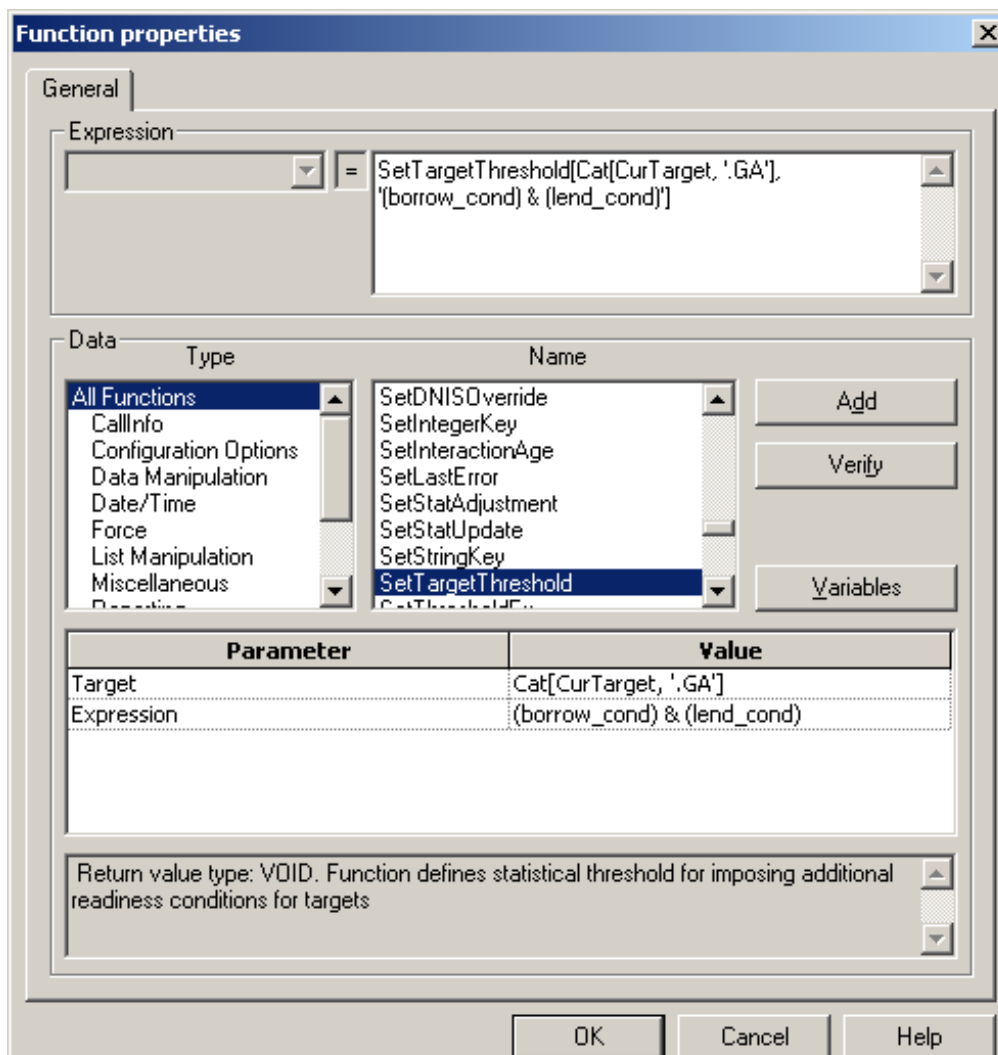


Figure 58: Function Properties

The Function object in Figure 58 on [page 91](#) imposes the conditions contained in variables on the current business line primary target (business line being evaluated) in context of the customer's requested business line.

Note: The interaction can only be routed if Expression in Figure 58 on [page 91](#) resolves to a not zero (value) indicating both the borrowing and lending conditions are true.

- Object 5 in Figure 53 on [page 87](#) is another Multi Assign object. It increments the target list for the requested business line (see [Figure 59](#)).

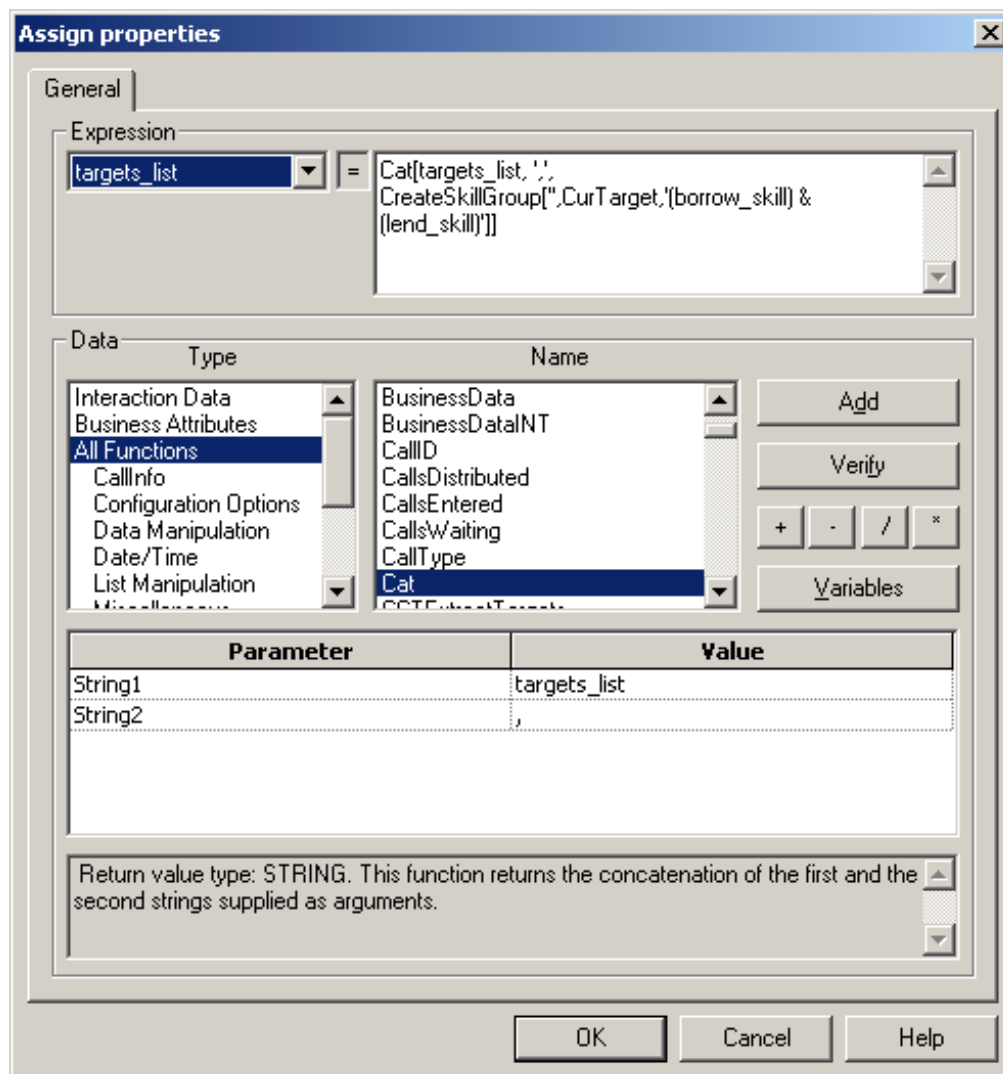


Figure 59: Assign Properties Dialog Box 5

The Cat function concatenates the strings returned by ListGetDataCfg.

As shown in Figure 54 on [page 88](#) and described in Table 2 on [page 90](#), the targets_list variable holds the names of Agent Group targets that can be routed to. The target_lists variable was previously defined as an Output

variable along with. vq_name. To see this, click the X= icon in the Routing Design window to open the Variable List dialog box (see [Figure 60](#)).

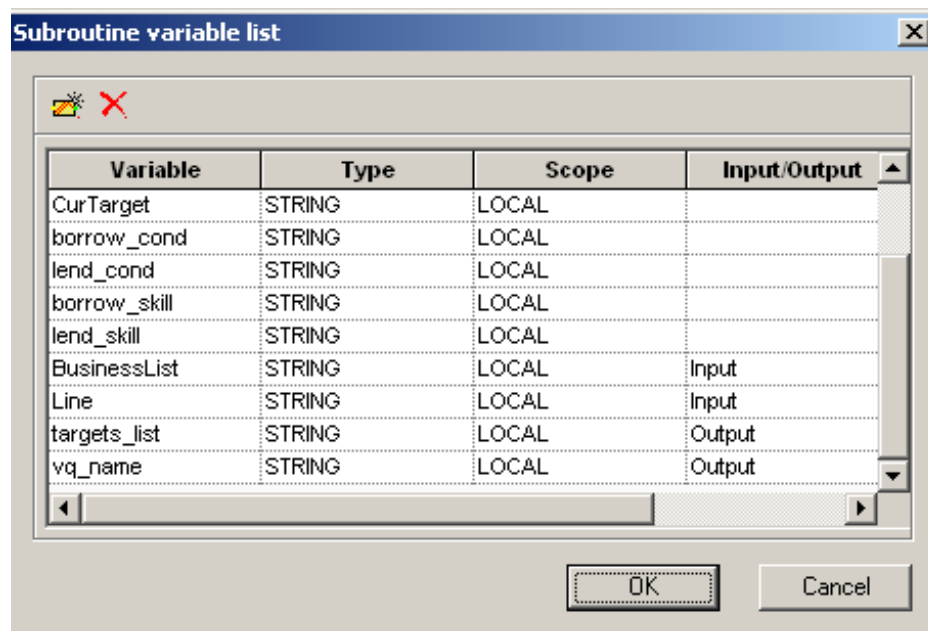


Figure 60: Variable List Dialog Box

Trigger Conditions Supported

Listed below are trigger conditions that are supported for use in threshold expressions:

- Number of interactions of a specific media type currently in queue.

Examples:

```
sdata(BLVirtualQueue, StatCallsInQueue)<x
```

or

```
sdata(BLVirtualQueue, StatCallsInQueueForMedia)<x
```

where StatCallsInQueueForMedia is a custom statistic similar to StatCallsInQueue, but filtered by media type.

- Estimated wait time for this queue exceeding X number of seconds or minutes.

Examples:

```
sdata(BLVirtualQueue, StatExpectedWaitingTime)<x
```

or

```
sdata(BLVirtualQueue, StatExpectedWaitingTimeForMedia)<x
```

where:

StatExpectedWaitingTimeForMedia is a custom statistic similar to StatExpectedWaitingTime, but filtered by media type.

- Comparing IRD predefined statistics or custom statistics (see the chapter on routing statistics in the *Universal Routing 7.6 Reference Manual*) with a certain value.

Example:

Current Service Level is less than 80% of calls answered within 20 seconds.

- Comparing result data retrieved from an external enterprise system with some user-defined value.
- Comparison operators supported are:
+, -, *, /, <, >, <=, >=, =, !=, &, |, ()
- Any combination of the above operators using AND, OR, () .
- Trigger conditions contained outside of a strategy in an IRD list object or a Configuration Manager object when used with predefined threshold functions `acfddata` and `lcfdata` (see [page 77](#)).

When you change a trigger condition contained in a list object or Configuration Manager object, the change takes place immediately (i.e., new incoming interactions and existing interactions waiting for the business line are affected).

- The lender always having X number of agents ready at any time or X number of agents ready at any time for a specific media type.

Example:

```
sdata[VISA.GA, StatAgentsAvailable]>=x
```

- Stating the lender condition using a Service Level statistic, such as Service Level of X% of calls answered within Y seconds.

Example:

```
sdata(BLVirtualQueue, StatServiceFactor)<x
```

Multi-Tiered Design

You can define agent skill criteria using a “multi-tiered” routing strategy design where each tier specifies:

- The skill criteria of the shared agents from the lender business line in a threshold expression.
- How long to wait before extending to the next tier of shared agents from another lending business line.
- How long to wait before switching back to the previous tier of agents from the previous lending business line.

Possible methods to implement a multi-tier approach include:

1. Using a cascading series of Routing target Selection objects connected through their red ports.

2. Strategy “looping” with the target set extended on every loop and then re-entering the same target Selection object.

Note: It is not necessary to encode within the strategy the targets to be added on every iteration. Instead the targets can be obtained from outside the strategy, such as list objects and database lookups.

Limitations

Share agent by service level agreement routing is applicable to and compatible with all routing models (including business-priority routing and cost-based routing) with the following exceptions:

- **Load balancing** (Load Balancing IRD object) based on StatExpectedWaitingTime, StatEstimatedWaitingTime, StatLoadBalance, StatCallsInQueue, and other statistic derived from these stats. Routing based on the value of these statistics focus load balancing on wait time; using the additional targets (associated with the lending business line) will upset the balance.
- Routing based on **Service Level routing rules**. Routing based on meeting Service Level objectives will upset the balance.
- **Percentage distribution** (Percentage IRD object), which focuses on a volume ratio distribution. Using the additional targets as target selection criteria will upset the balance.
- The use of Workforce Routing Rules.
- Routing based on the value of any type of statistic that leads to **equal or quantifiable distribution of interactions to routing targets**.



Chapter

6

Proactive Routing

In general, proactive routing means using the Genesys software to send potential customer interactions to agents prior to customer contact when running a *Campaign*. Examples of Campaigns include a telephone collection Campaign aimed at customers with outstanding balances on credit cards or an e-mail Campaign marketing a new product. The goal is to prepare agents for customer contact prior to running the Campaign. Contrast proactive routing with the routing of interactions that originate from customers. Proactive routing can also be used for agent work items initiated in-house.

Note: This chapter presents summary information on a Genesys Proactive Routing solution. For detailed information and step-by-step configuration instructions, see the *Genesys 7.6 Proactive Routing Solution Guide*.

The information in this chapter is divided among the following topics:

- [What Is a Proactive Routing Solution?, page 97](#)
- [Component Products, page 98](#)
- [Business Use Cases, page 99](#)

What Is a Proactive Routing Solution?

Note: From a Genesys Configuration Database standpoint, proactive interactions are Open Media interactions with a media type of outbound preview.

A Proactive Routing solution provides the ability to:

1. Proactively route outbound preview interactions to Genesys Agent Desktop. Only non-voice interactions of the outbound preview media type can be processed in Push Preview mode.

2. Completely process Calling List and Do Not Call List records solely from the logic of a routing strategy without agent intervention.
3. Use the same Outbound List and Campaign Management capabilities for managing both voice and non-voice interactions.
4. Configure the solution to select agents based on business rules contained in routing strategies while still considering agent capacity rules.

For a complete list of features and benefits, see the *Genesys 7.6 Proactive Routing Solution Guide*.

Proactive Routing Strategies

You can create proactive routing strategies that use the following Outbound strategy-building objects for “agent-less” processing of Campaign List records: Add Record, Reschedule, Update, Do Not Call, and Processed. Example of agent-less processing (second strategy):

1. A customer calls, but abandons the call before an agent can answer.
2. The first routing strategy detects the abandoned call.
3. The routing strategy uses the Create Interaction IRD strategy-building object to create a customer interaction record in the Universal Contact Server Database and then writes the interaction to a queue in a business process.
4. A second strategy in the business process uses the Add Record object to add the customer to a specified Calling List without agent intervention.

The Calling List can subsequently be used by an Outbound Campaign that dials out these customers during off peak hours and has the agent apologize and follow up.

Component Products

The ability to proactively route outbound preview interactions to the Agent Desktop is enabled through the integration of the following Genesys products/servers:

- Outbound Contact and Outbound Contact Server (the dialing engine)
- Universal Routing and Universal Routing Server (the routing engine)
- Multimedia and Interaction Server (the workflow engine)

Outbound Contact Server push preview mode pushes interactions to the Genesys Agent Desktop through the inter-communication of Interaction Server and Universal Routing Server.

Business Use Cases

Business use cases for a Proactive Routing solution fall into the following categories:

- **High value/low volume activities such as:**
 - Multi-lingual Outbound Campaign
 - Flexible callback routing
 - Last minute pre-dial check
- **Strategic interactions such as:**
 - Training Campaigns
 - Automated follow-up list development
- **Non-voice communications (multimedia interactions)**
 - Simple outbound e-mail Campaigns
 - The new Proactive Contact – E-mail/SMS package described in the *Genesys 7.6 Proactive Contact Solution Guide*

The next section presents some specific use cases.

Use Case #1: Multi-lingual Outbound Campaign

A Proactive Routing solution could be used to implement the following use case:

- Single Campaign running in *Preview* mode (calls are dialed only after the agent first previews a Calling List record and manually requests the call to be dialed).
- Customers on the Calling List speak different languages.
- Agents possess multiple language skills, with those *Skills* defined in the Configuration Database and assigned to the *Person* (agent) object.
- Routing interactions to agents is accomplished by URS executing a routing strategy, matching the customer's primary language with agent language skills.
- This is a multi-lingual fraud protection Campaign directed at credit card customers because a recent transaction triggered the suspicion of fraud.
- Calling List is generated dynamically (new records arrive, old records may disappear as customers call in themselves).
- Customer's language is contained in the interaction as a record attribute.
- Each agent's language is identified as a *Skill* object in Configuration Manager and the *Skill* object is assigned to the *Person* (agent) object.
- Outbound records routed to appropriate language agents in *Preview* mode.

- If the attempt to contact the customer fails (exceeds five hours), solution generates an e-mail with the text: We blocked your card for the fraud suspicion. Tried to contact you. Please call this number.
- The Campaign attempts to contact high-value customers first (Customer Segment specified as a record attribute).
- If the customer calls in, the call is matched with the case (record) and the record is updated with the appropriate result.
- Agents are blended (can work with media channels other than voice). Priority is defined by customer value, but inbound calls with the same value have a higher priority than outbound.

Use Case #2: Callback Routing

A Proactive Routing solution could be used to implement the following use case:

- Contact center with specific business requirements associated with outbound calls and callback distribution among agents.
- Outbound agents are divided into relatively small teams (5-7 people) with specific revenue objectives. When an outbound call results in a callback request, this callback request must be managed by the same agent team in order to keep track of the revenue.
- Outbound call distribution is implemented according to the following rules:

Predictive dialing mode used to create new calls (records) (agent availability is predicted). Calls are delivered to any Campaign agent.

Personal callback uses Preview mode (calls dialed from a Calling List only when an agent previews a customer Calling List record and manually requests a call to be dialed).

Solution delivers Personal Callback record to requesting agent. If requesting agent is not available, deliver to requesting agent's team. If no agents available in Team, deliver to any Campaign agent.

This scenario is graphically depicted below.

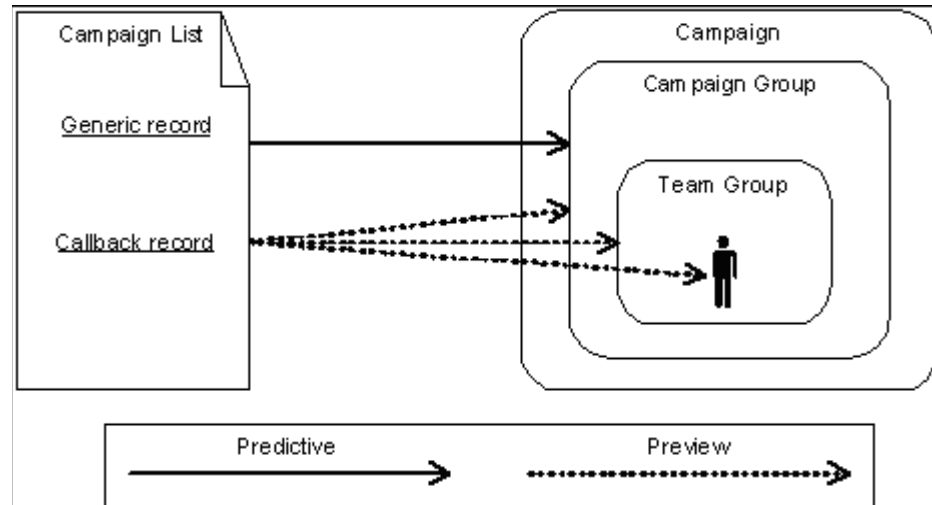


Figure 61: Callback Routing

Use Case #3: Last minute Pre-Dial Check

A Proactive Routing solution could be used to for the following use case:

- Collection Campaign running in preview mode.
- Preview records are routed to agents with routing strategy.
- Before sending the record to the Agent Desktop, the strategy checks if customer still has an outstanding balance or whether the issue was resolved after the Calling List was built for the collection Campaign. If the issue is resolved, the record is completed without sending it to the agent.

Use Case #4: Training Campaign

A Proactive Routing solution could be used for the following use case:

- There is a shortage of agents trained (skilled) for selling product XYZ in a call center. It is identified that at least 20 more agents should be trained for this skill.
- An online web session delivers agent training to individual agents so that training time does not negatively affect Service Level (for example, you may want to deliver 60% of interactions in less than 10 seconds).

To handle this use case, create a Proactive Campaign with 20 training work items. Route these work items to idle agents during low traffic times who are the best choice for this task (have adjacent skill but not the required skills).

Use Case #5: Automated follow-up list development

A Proactive Routing solution could be used for the following use case:

- Automatically develop a Calling List to follow up on inbound calls, abandoned during traffic peaks.
- A routing strategy detects the abandoned calls and adds a record to the specified list with the parameters of the incoming interaction.

Use the Calling List for an outbound Campaign that dials these customers during off peak hours to apologize and to follow up.

Note: For detailed information on proactive routing, including Features and Benefits, as well as step-by-step configuration instructions, see the *Genesys 7.6 Proactive Routing Solution Guide*.

Use Case #6: Simple Outbound E-mail Campaigns

A Proactive Routing solution could be used for the following use case:

- Create an Outbound List with e-mail address as one of the record attributes.
- Configure a Campaign for proactive interaction routing.
- Routing strategy does not route interactions to the Agent Desktop, but instead sends outbound e-mails using integrated Genesys E-mail capabilities.

Note: For detailed information, including Features and Benefits, as well as step-by-step configuration instructions, see the *Genesys 7.6 Proactive Routing Solution Guide*.



Chapter

7

SIP/Instant Messaging Solution

Genesys SIP Server is a combined T-Server and a call-switching component, in which the call-switching element functions as a Session Initiation Protocol (SIP) Back-to-Back User Agent. In concrete terms, this means that call switching and control is performed by Genesys—no third-party PBX or ACD system is required.

Universal Routing 7.6 supports a Genesys SIP/Instant Messaging solution as described in the *Genesys 7.6 Instant Messaging Solution Guide*.

The information in this chapter is divided among the following topics:

- [Universal Routing SIP Support, page 103](#)
- [Genesys Instant Messaging Solution, page 104](#)

Universal Routing SIP Support

Universal Routing Server can work with SIP Server to support both chat and instant messaging (IM) sessions between agents and customers in a Genesys SIP/Instant Messaging Solution. If an agent can receive both voice and IM interactions based on agent capacity rules, Universal Routing supports the following SIP capabilities:

- Routing voice call to agents behind a traditional PBX (TDM phone and SIP Instant Messaging client).
- Routing voice calls to agents with SIP voice-only phones.
- Routing voice calls to agents with SIP endpoints supporting both the voice and the instant message channels at the same time.
- A single agent can support several instant message interactions simultaneously based on agent-capacity rules.

Genesys Instant Messaging Solution

A Genesys Instant Messaging solution allows individual parties to communicate with one another in real time using text messages. Additionally, some of the available Genesys instant messaging solutions allow for features such as supervisor monitoring, conferencing, suggested responses, and other similar contact-center-related features you might expect from a communication medium.

Instant messaging in the Genesys context can take many forms:

- SIP inbound instant messages handled by Genesys SIP Server and delivered to an agent using Genesys Desktop (with or without Genesys Desktop SIP Endpoint running).
- SIP inbound instant messages handled by Genesys SIP Server and delivered to a customized agent desktop. For Genesys instant messaging purposes, this desktop need only be able to handle text associated with the interaction, and could be built with or without a SIP endpoint. This agent desktop could be built with Genesys SDK software or a third-party set of tools.
- The Genesys Multimedia Chat offering, which allows for an HTTP-based chat client to send instant messages to agents working in a Genesys contact center.
- Customized text message communication inside the contact center using a communication DN configured for your switch in the Configuration Layer.

Note: For more information on a Genesys Instant Messaging solution, see the *Genesys 7.6 Instant Messaging Solution Guide*.



Index

Symbols

..... 12

A

acfgdata function 77
Age of Interaction 42
agent configuration 34
agent cost 63
Agent Desktop 98
agent information 34
agent skills 99
Attached data for CBR reporting 64
Attributes 32
audience
 defining 8

B

borrowing conditions for SLA 72
business line 69, 86
business priority routing
 available selection criteria 40
 customer segment 52
 highest priority interaction 40
 longest current wait time 41
 oldest interaction 42
 overview 39
 recommended settings 52
 service objective risk 44
 voice interactions only 52
 what-if wait time 43
Business Rules 31
Business use cases 99

C

Call Concentrator 64
callage function 78

Callback Routing 100
Campaign 98, 99
Campaigns 97
chapter summaries 8
chat/instant messaging 103
CIM Platform 7
collaboration 42
commenting on this document 13
conditional routing 69
Configuration Manager 19, 34
configuration options 20
Configuration Units 66
cost units in cost-based routing 60
cost-based routing
 cost as agent property 63
 cost units 60
 definition 59, 97, 103
 features & benefits 66
 reporting 64
 simple solution 63
 Volume IT contract 62
CPU sizing 12
Current Wait Time 41

D

data flow for reporting 64
Day Contract 62
DN
 non-configured 61
 outsourcing 61
document
 conventions 9
 errors, commenting on 13
 version number 9
documentation
 Agent Capacity Wizard 12
 Deployment Guide 11
 Genesys 7 Events and Models Reference
 Manual 12
 Genesys 7.6 Instant Message Solution Guide .

- 12
 - getting started information 11
 - IRD Help 12
 - Reporting 12
 - sizing 12
 - Stat Server 12
 - Universal Routing Business Process User's Guide 11
 - Universal Routing Cost-Based Routing Configuration Guide 12
 - Universal Routing Reference Manual 11
 - Universal Routing Strategy Samples 12
- E**
- E-mail Campaigns 102
- F**
- FIFO 52, 53, 54
 - functions
 - acfgdata 77
 - available for strategies 20
 - callage 78
 - FindServiceObjective 52
 - for threshold expressions 77
 - lcfgdata 78
 - Priority 56
 - PriorityTuning 52
 - sdata 77
 - SetTargetThreshold 78
 - SetVQPriority 55
 - Update 33
- G**
- Genesys Knowledge Manager 20
 - Genesys Outbound Contact 23
- H**
- hardware sizing 12
 - help file
 - Framework 6.5 Log Events 12
 - Interaction Routing Designer Help 12
 - highest priority interaction 40
- I**
- ICON 64
 - IM sessions 103
 - Info Mart 64
 - instant messaging 103
- interaction age in business priority routing. . . 42
 - interaction data 29
 - Interaction Routing Designer 17
 - Interaction Server 98
 - Interactive Voice Response 29
 - IRD 17
 - IVR 29
- K**
- Knowledge Manager 20
- L**
- lcfgdata function 78
 - lending conditons for SLA 72
 - life duration 42
 - list object 78, 83, 86
 - log events 12
 - longest age 42
 - longest current wait time 41
 - low priority interactions 40
- M**
- Multi Assign object 87
 - Multi Function object 84
 - multi-lingual Outbound Campaign 99
 - Multimedia definition 8
- N**
- non-configured DN 61
 - non-monitored destination 66
 - non-monitored outsourcer 61
- O**
- oldest age of interaction 42
 - options for configuration 20
 - Outbound Contact 23
 - Outbound strategy-building objects 98
 - outbound_preview media type 97
 - outsourcers 60
- P**
- Person Properties dialog box 28
 - Pre-Dial Check 101
 - priority routing 40
 - proactive routing
 - component products 98
 - defined 97

solution	97
Push Preview mode	98

R

rbn files	22
recommended settings business priority routing	52
reporting for cost-based routing	64
Risk Factors for Service Objective	45
Router	17
Routing (target) Selection object	74
routing defined	16
Routing Design window	18
routing selection criteria	40
routing strategies	16
routing strategy samples	12

S

sample strategy, skills-based routing	16
Samples	12
saving a strategy	21
sdata function	77
Segmentation object	31
Selection object	74
Service Objective	44
service objective risk factor	44
Service Objective vs. Response Objective	52
servicelevelagreement_sample subroutine	86
Session Initiation Protocol	103
SetTargetThreshold function	78
share agent by service level agreement	
definition	69
features	70
problem solved	71
threshold expression	73
use case	71
SIP Server	12, 103
sizing	12
skill assignment to agents	34
Skill Expression Builder	35
Skill Properties dialog box	27
skills	99
skills-based routing	
agent skills	34
attached data	29
Attributes	32
Business Rules	31, 32
Business Segmentation object	31
definition	25
example	29
Expression Builder	35
Function object	33
language	29

profile (agent)	25
Routing Selection object	34
skill expression	35, 37
skill level	25
T-Server	29
virtual agent groups	26
sla1_sample strategy	78
sourcing DN	61
strategy	
saving	21
strategy samples	31, 78
subroutine sample	86

T

threshold expression	73, 76
Training Campaign	101
transfer of interactions	42
typographical styles	10

U

Universal Routing product	16
Universal Routing Server	17, 98
log events	12
use cases	99
user interface for strategies	18

V

Variable Rate IT Contract	62
version numbering	
document	9
virtual queue	41
Volume IT Contract	62

W

wait time in business priority routing	41
--	----

