



This PDF is generated from authoritative online content, and is provided for convenience only. This PDF cannot be used for legal purposes. For authoritative understanding of what is and is not supported, always use the online content. To copy code samples, always use the online content.

# Genesys Events and Models Reference

ISCC Events

4/2/2025

---

## Contents

- 1 ISCC Events
  - 1.1 EventAnswerAccessNumber
  - 1.2 EventRemoteConnectionSuccess
  - 1.3 EventRemoteConnectionFailed
  - 1.4 EventReqGetAccessNumberCanceled

---

# ISCC Events

## EventAnswerAccessNumber

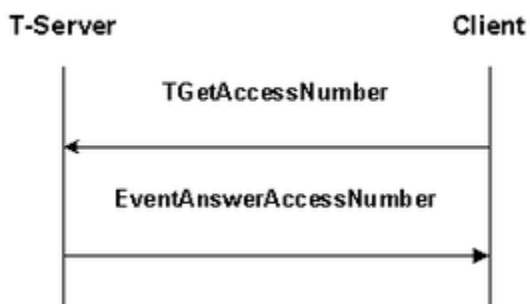
### Description

T-Server has processed a previously called TGetAccessNumber() function and has returned the requested access number.

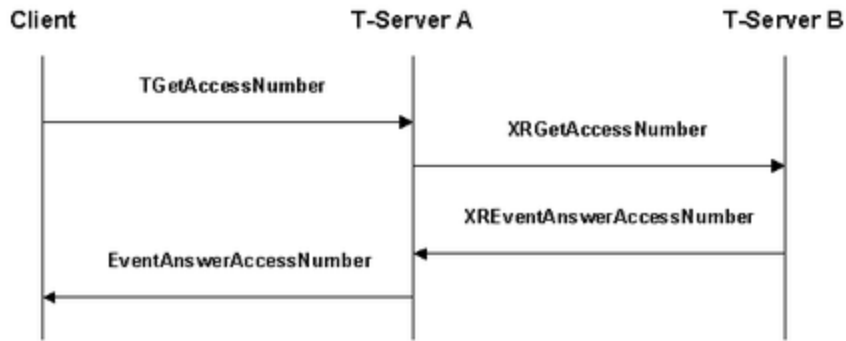
### Contents

Event Attribute	Type
AccessNumber	Mandatory
ThisDN	Mandatory
ConnID	Mandatory
Event	Mandatory
ReferenceID	Mandatory
Server	Mandatory
time	Mandatory
Extensions	Optional

### Examples



EventAnswerAccessNumber when GetAccessNumber Does Not Contain AttributeLocation



EventAnswerAccessNumber when TGetAccessNumber Contains AttributeLocation

### Important

In EventAnswerAccessNumber T-Server A acts as an origination, and T-Server B a destination T-Server.

## EventRemoteConnectionSuccess

### Description

The call has successfully reached the remote switch.

### Contents

Event Attribute	Type
ConnID	Mandatory
CustomerID	Optional
Event	Mandatory
Extensions	Optional
ReferenceID	Mandatory
Server	Mandatory
ThisDN	Mandatory
time	Mandatory

## EventRemoteConnectionFailed

### Description

The call failed to reach the remote switch or could not be treated as successful (for example, ISCC could not route the call to a requested destination DN).

### Contents

Event Attribute	Type
ConnID	Mandatory
CustomerID	Optional
Event	Mandatory
ReferenceID	Mandatory
Server	Mandatory
time	Mandatory
ThisDN	Mandatory
Extensions	Optional

## EventReqGetAccessNumberCanceled

### Description

T-Server has canceled a previously called TGetAccessNumber() function before processing is complete.

### Contents

Event Attribute	Type
Event	Mandatory
ReferenceID	Mandatory
Server	Mandatory
time	Mandatory
XReferenceID	Mandatory
Extensions	Optional

---