



This PDF is generated from authoritative online content, and is provided for convenience only. This PDF cannot be used for legal purposes. For authoritative understanding of what is and is not supported, always use the online content. To copy code samples, always use the online content.

Genesys Events and Models Reference

ISCC Events

5/4/2025

Contents

- 1 ISCC Events
 - 1.1 EventAnswerAccessNumber
 - 1.2 EventRemoteConnectionSuccess
 - 1.3 EventRemoteConnectionFailed
 - 1.4 EventReqGetAccessNumberCanceled

ISCC Events

EventAnswerAccessNumber

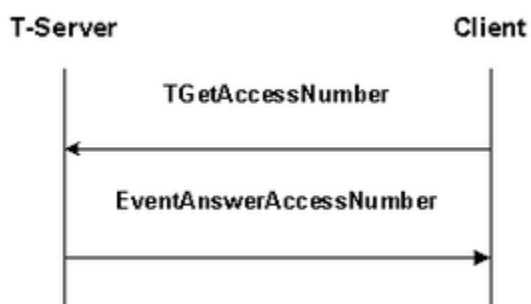
Description

T-Server has processed a previously called `TGetAccessNumber()` function and has returned the requested access number.

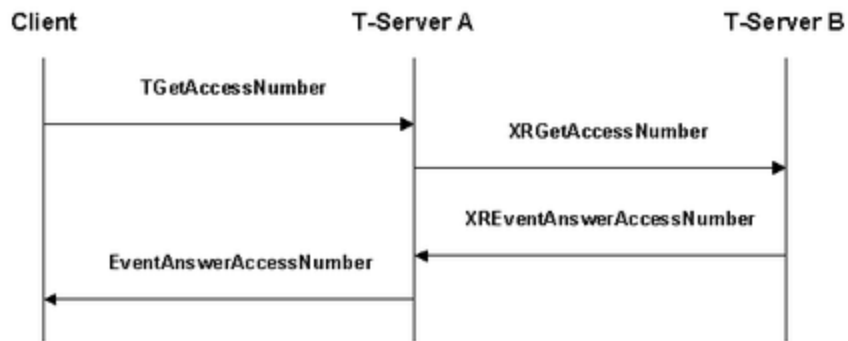
Contents

Event Attribute	Type
AccessNumber	Mandatory
ThisDN	Mandatory
ConnID	Mandatory
Event	Mandatory
ReferenceID	Mandatory
Server	Mandatory
time	Mandatory
Extensions	Optional

Examples



EventAnswerAccessNumber when GetAccessNumber Does Not Contain AttributeLocation



EventAnswerAccessNumber when TGetAccessNumber Contains AttributeLocation

Important

In EventAnswerAccessNumber T-Server A acts as an origination, and T-Server B a destination T-Server.

EventRemoteConnectionSuccess

Description

The call has successfully reached the remote switch.

Contents

Event Attribute	Type
ConnID	Mandatory
CustomerID	Optional
Event	Mandatory
Extensions	Optional
ReferenceID	Mandatory
Server	Mandatory
ThisDN	Mandatory
time	Mandatory

EventRemoteConnectionFailed

Description

The call failed to reach the remote switch or could not be treated as successful (for example, ISCC could not route the call to a requested destination DN).

Contents

Event Attribute	Type
ConnID	Mandatory
CustomerID	Optional
Event	Mandatory
ReferenceID	Mandatory
Server	Mandatory
time	Mandatory
ThisDN	Mandatory
Extensions	Optional

EventReqGetAccessNumberCanceled

Description

T-Server has canceled a previously called TGetAccessNumber () function before processing is complete.

Contents

Event Attribute	Type
Event	Mandatory
ReferenceID	Mandatory
Server	Mandatory
time	Mandatory
XReferenceID	Mandatory
Extensions	Optional