



This PDF is generated from authoritative online content, and is provided for convenience only. This PDF cannot be used for legal purposes. For authoritative understanding of what is and is not supported, always use the online content. To copy code samples, always use the online content.

Workbench User's Guide

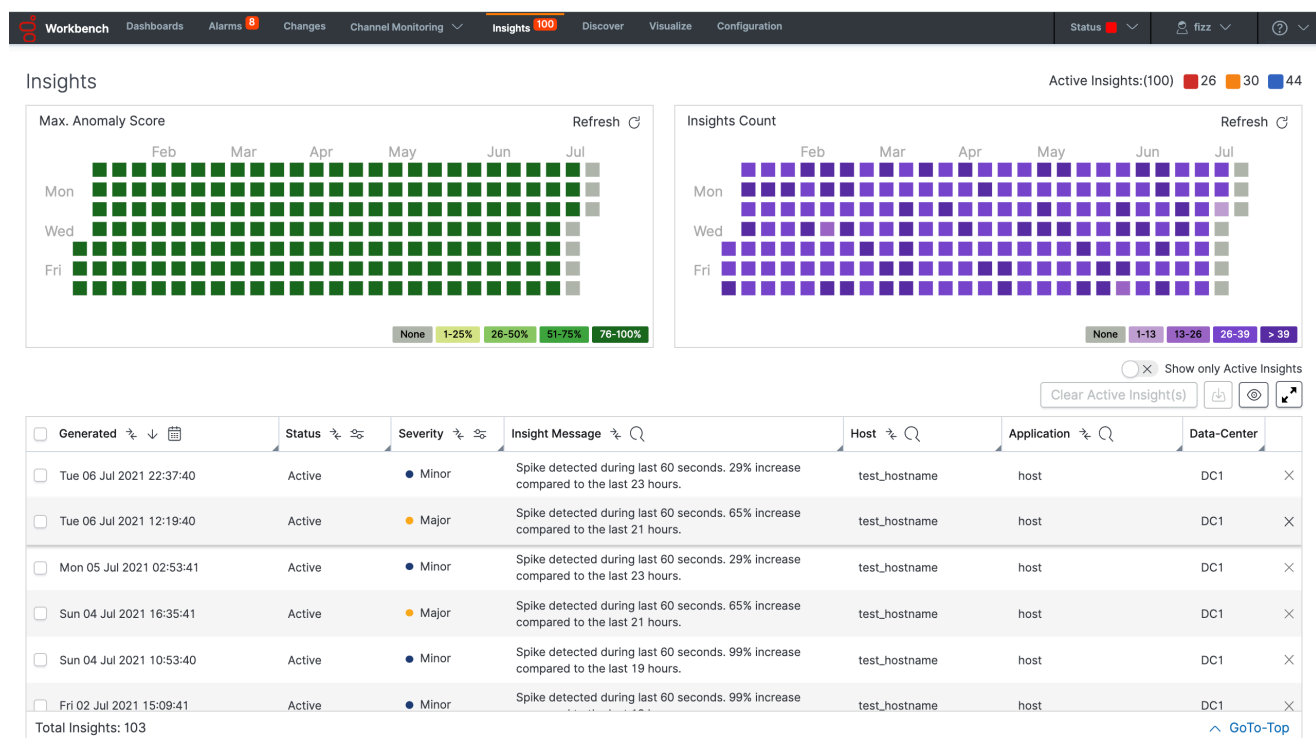
Anomaly Detection (AD)

5/2/2025

Anomaly Detection (AD)

Workbench Anomaly Detection (AD) "Insights" will be autonomously and predictively raised, via the dedicated "Insights" Console, based on the dynamic Anomaly Detection model of the ingested metric data received from Hosts/Processes, via the Workbench Remote Agent (WAR) applications that are installed on the Genesys Application servers (i.e. sip, urs, gvp etc etc).

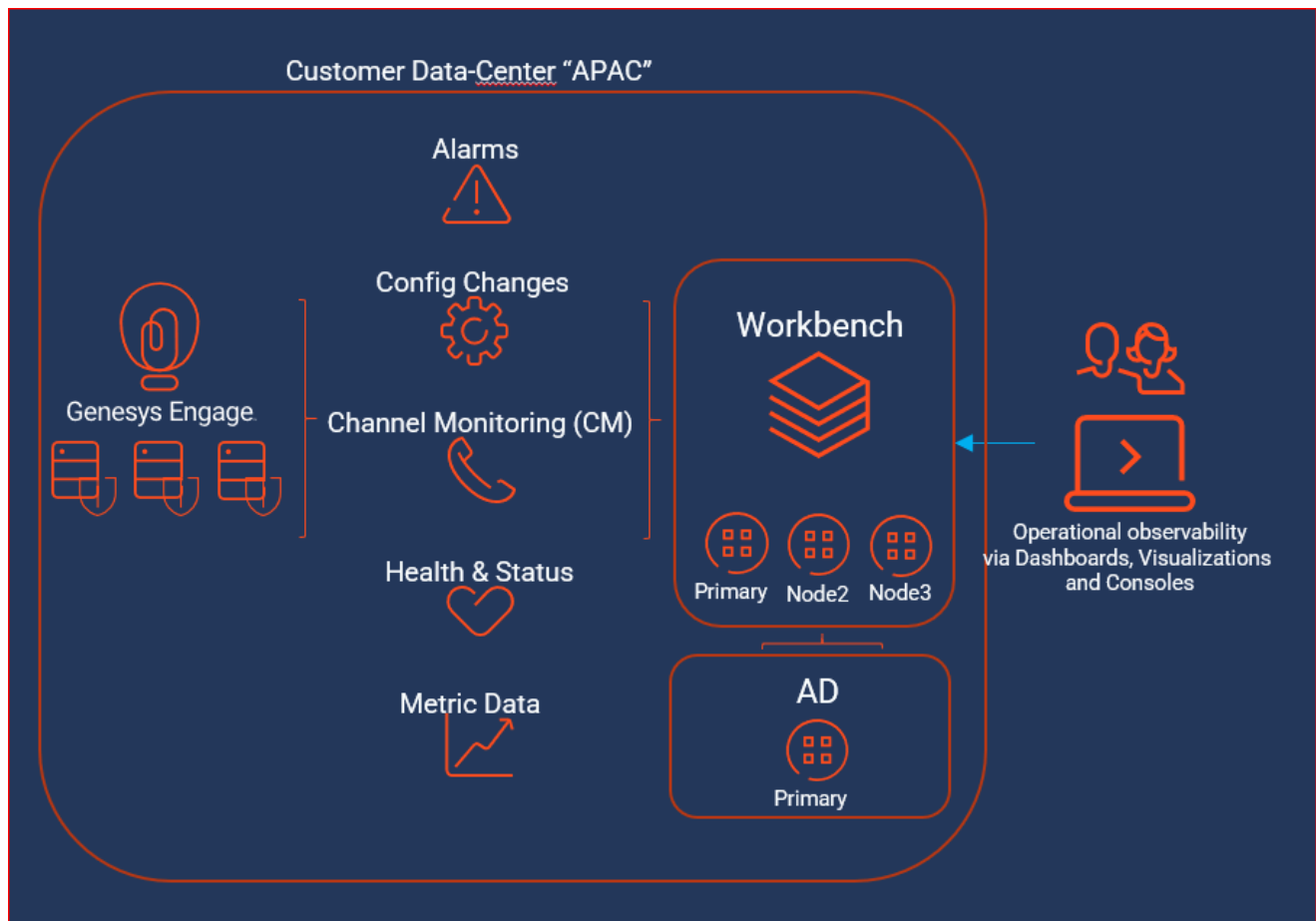
AD Insights Console



Important

- Please review [Using AD](#) for more details on using the AD feature of Workbench

Example AD Architecture



Important

- Please review [AD Architecture Examples](#) for more details on AD architectures.