



This PDF is generated from authoritative online content, and is provided for convenience only. This PDF cannot be used for legal purposes. For authoritative understanding of what is and is not supported, always use the online content. To copy code samples, always use the online content.

# SpeechMiner Administration Guide

Installing IIS on the Web Server or Interaction Receiver Server

12/13/2025

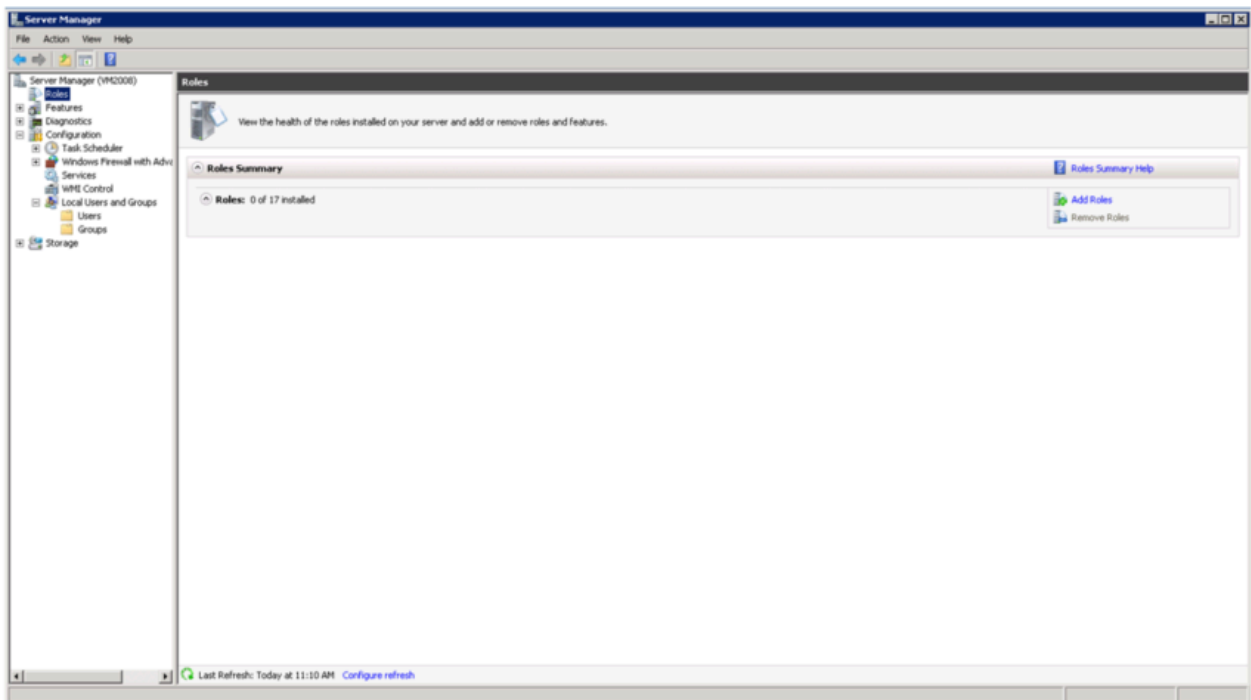
# Installing IIS on the Web Server or Interaction Receiver Server

## Windows Server 2008

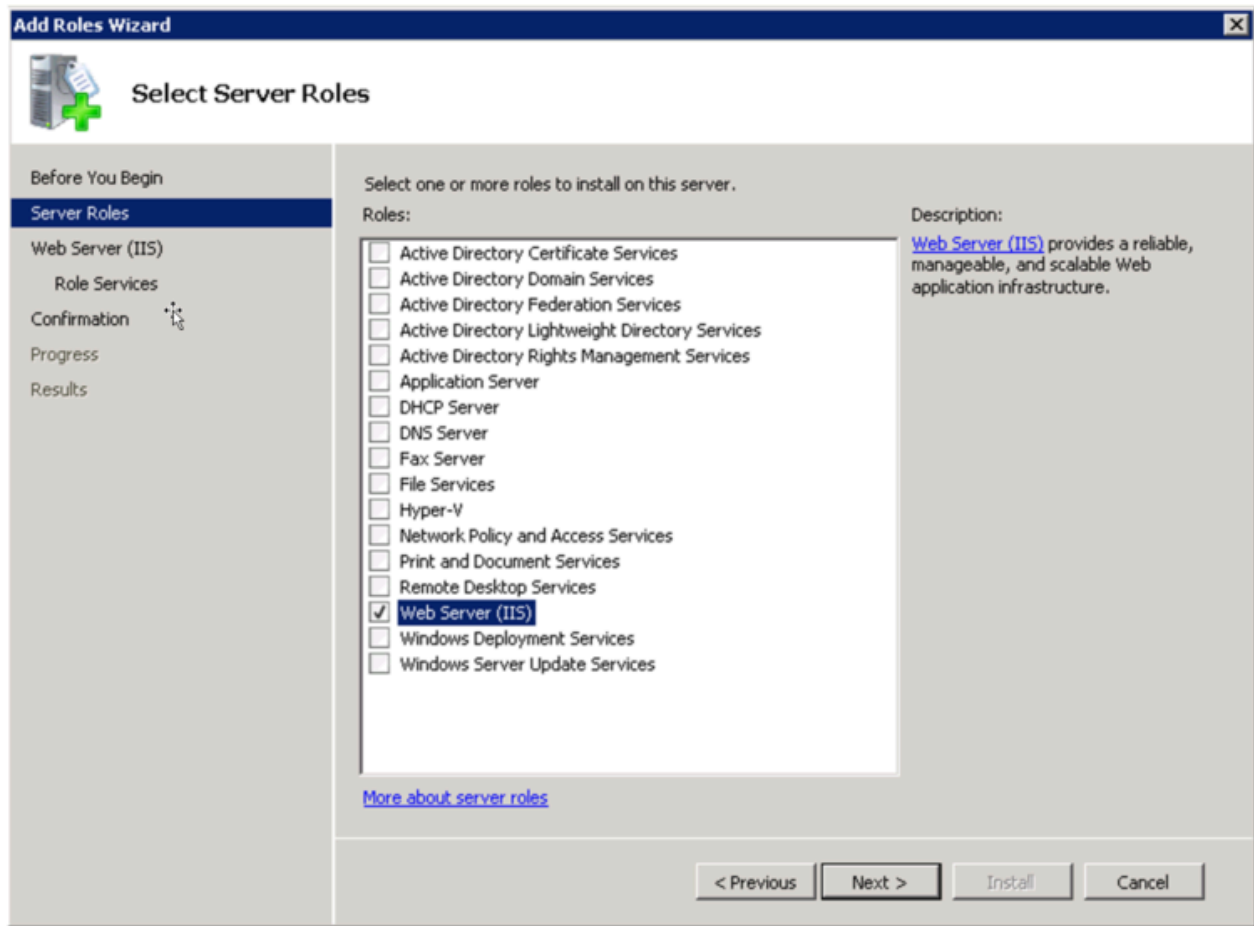
On Windows Server 2008, you can install and configure the Internet Information Services (IIS) in the Server Manager.

To install and configure the IIS component:

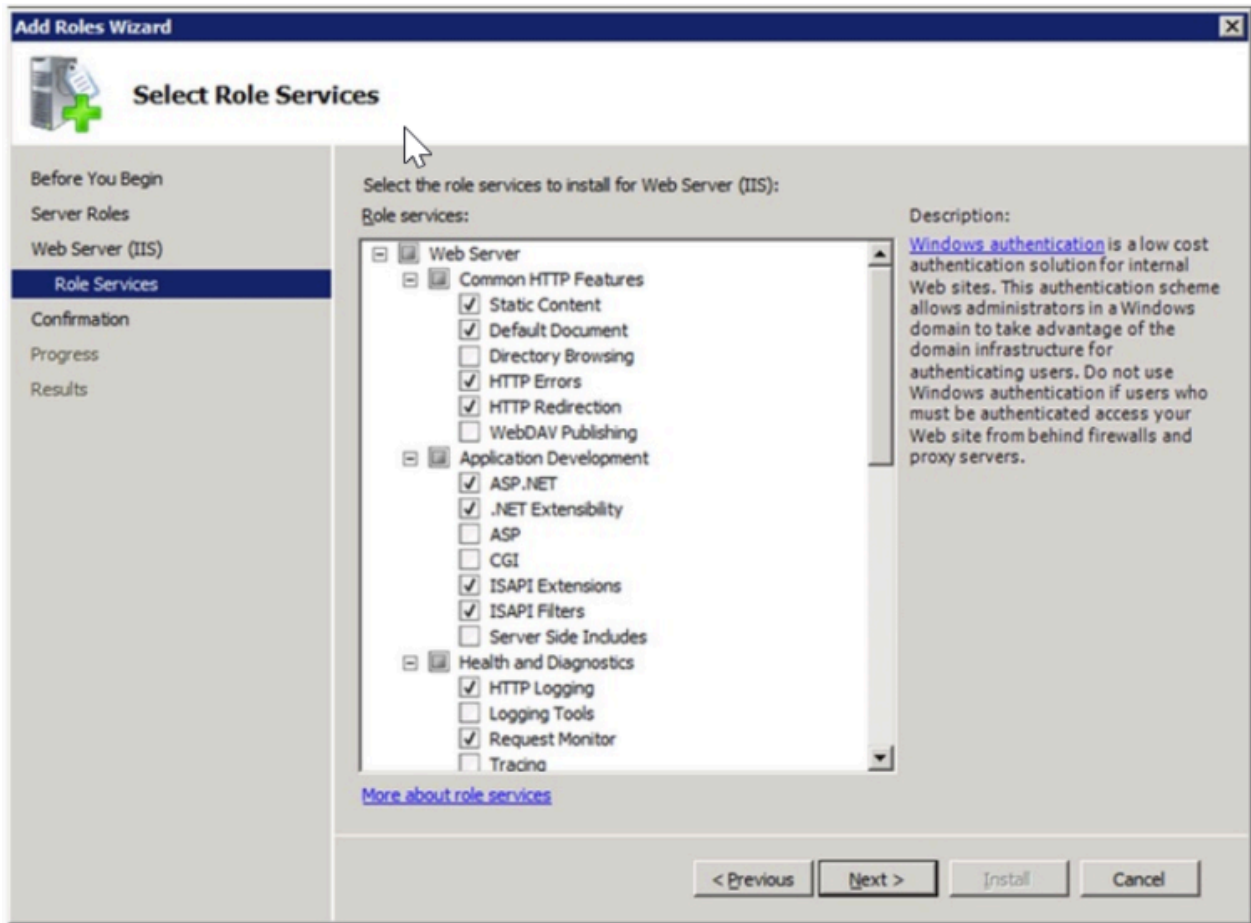
1. From the **Start** menu, select **All Programs > Administrative Tools > Server Manager**. The **Server Manager** opens.
2. On the left side of the window, select **Roles**.



3. On the right side of the screen, select **Add Roles**. The **Add Roles Wizard** opens.



4. From the list of roles, select **Web Server (IIS)**, and then select **Next**. An **Introduction to the Web Server** is displayed.
5. Select **Next**. The **Role Services** screen opens.

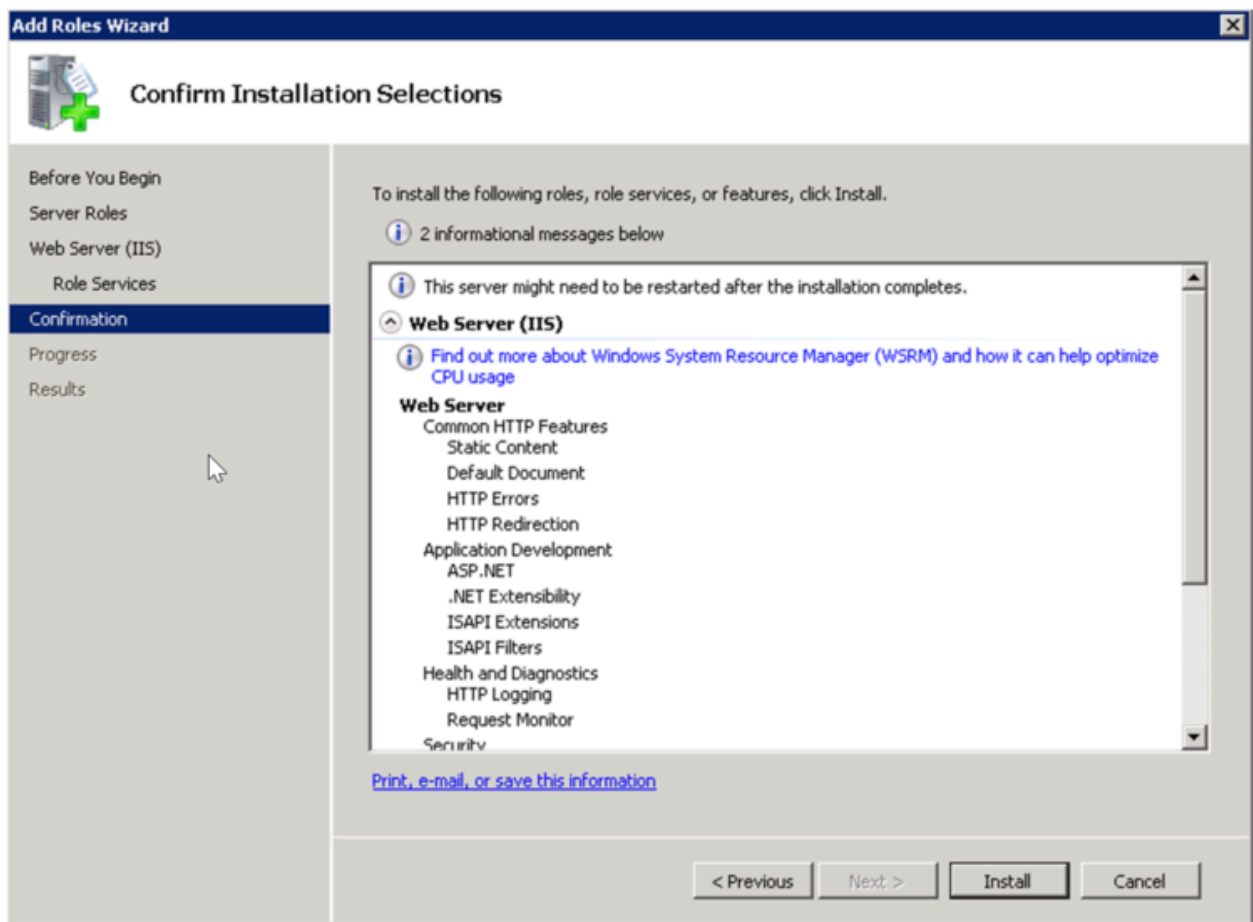


6. Under **Role Services**, make sure the following services are selected:
  - a. Under **Common HTTP Features**:
    - **Static Content**
    - **Default Document**
    - **HTTP Errors**
    - **HTTP Redirection**
  - b. Under **Application Development**:
    - **ASP.NET**
    - **ISAPI Extensions**
    - **ISAPI Filters**

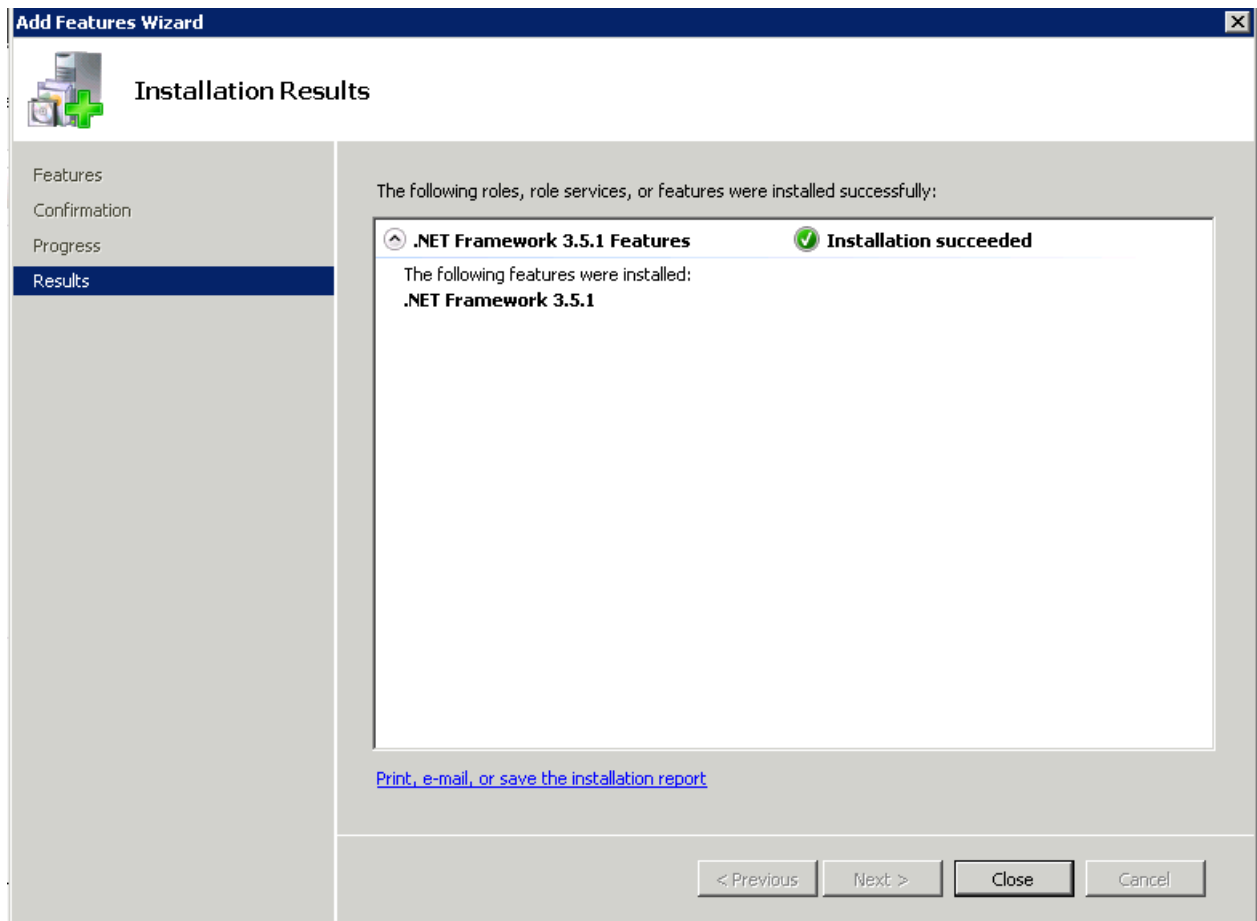
## Important

When you select ASP.NET, a window pops up, asking you to confirm that you want to "Add role services required for ASP.NET." Select **Add required role services**.

- c. Under **Security**:
    - **Windows Authentication**
  - d. Under **IIS 6 Management Compatibility**:
    - **IIS 6 WMI Compatibility**
    - **IIS 6 Metabase Compatibility**
7. Click Next. A **Confirm Installation Selections** screen opens.



8. Select **Install**. The installation process begins, and the **Installation Progress** screen is displayed. When the installation is completed, an **Installation Results** screen is displayed.

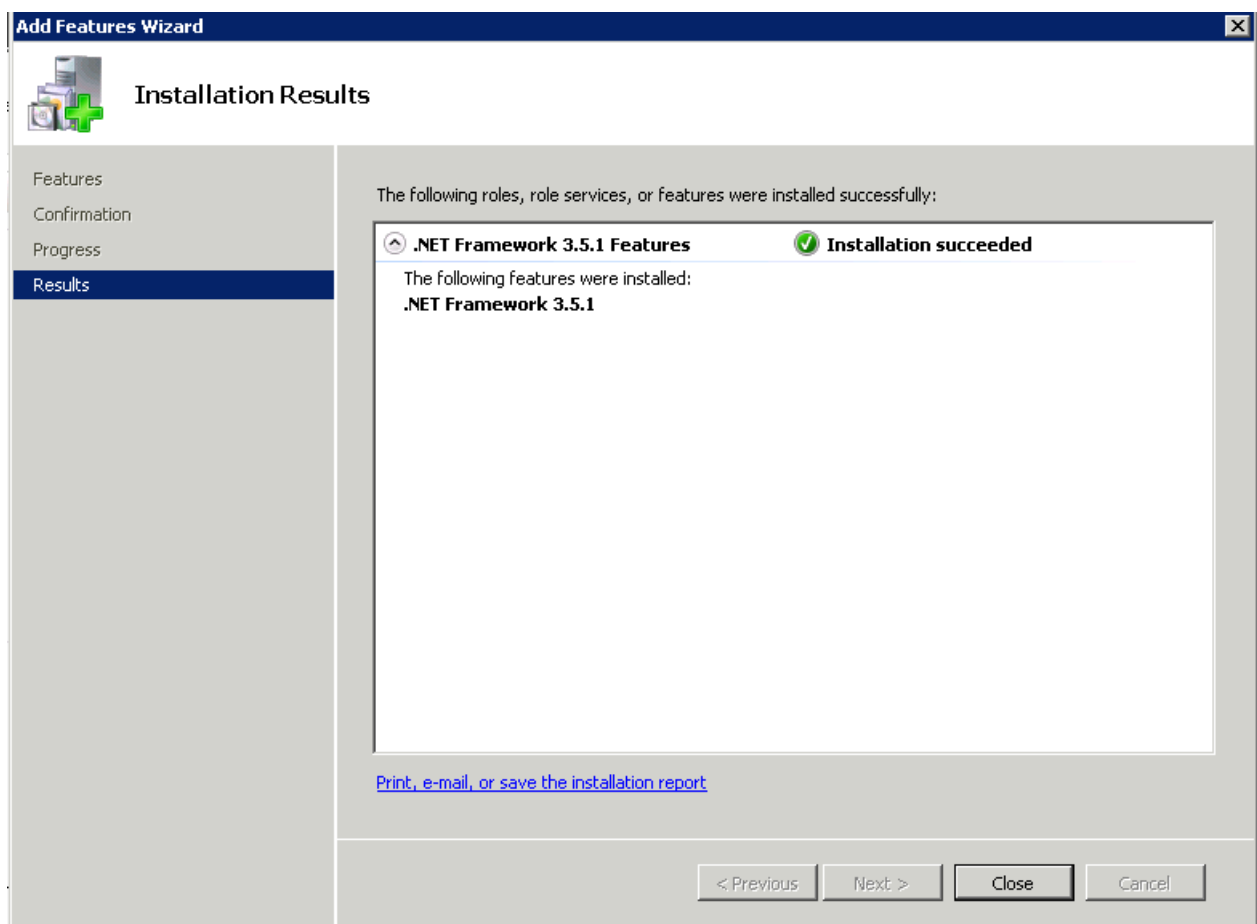


9. Click **Close**. The **Add Roles Wizard** closes, and the **Server Manager** lists the **Web Server (IIS)** role as installed.



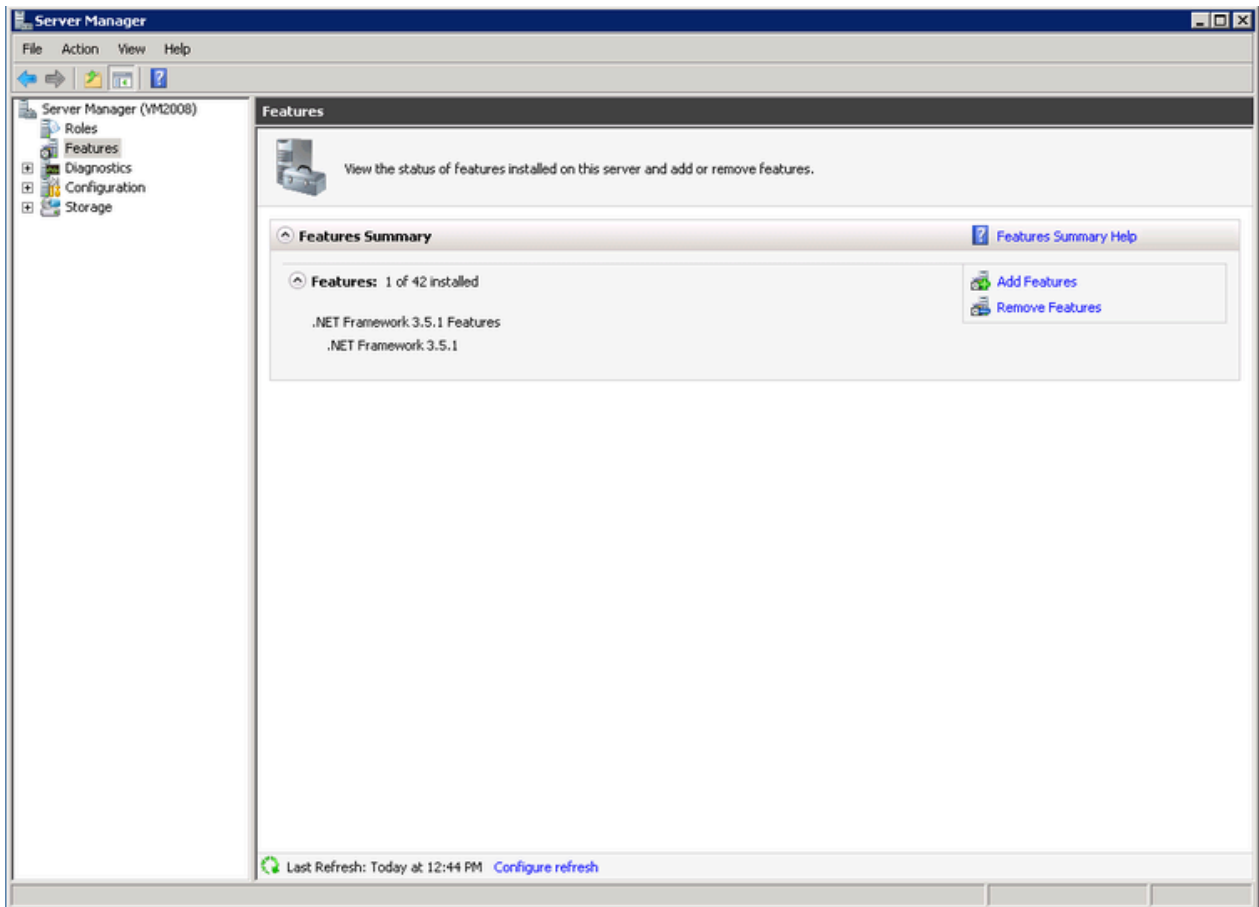
10. From the **Server Manager**, in the left pane, select **Features**, and then, in the right pane, select **Add Features**. The **Add Features Wizard** opens.
11. Select **Add required role services**. The window closes.

Click **Next** three times, and then click **Install**. The installation process begins, and the **Installation Progress** screen is displayed. When the installation is completed, the **Installation Results** screen is displayed.



12. Click **Close**. The **Add Features Wizard** closes, and the **Server Manager** lists the features you selected as installed.



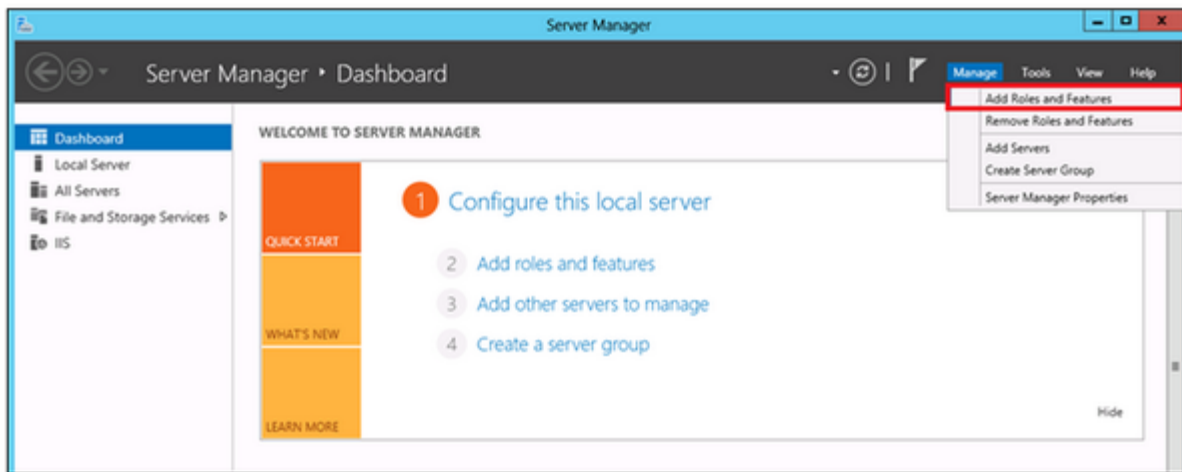


## Windows Server 2012

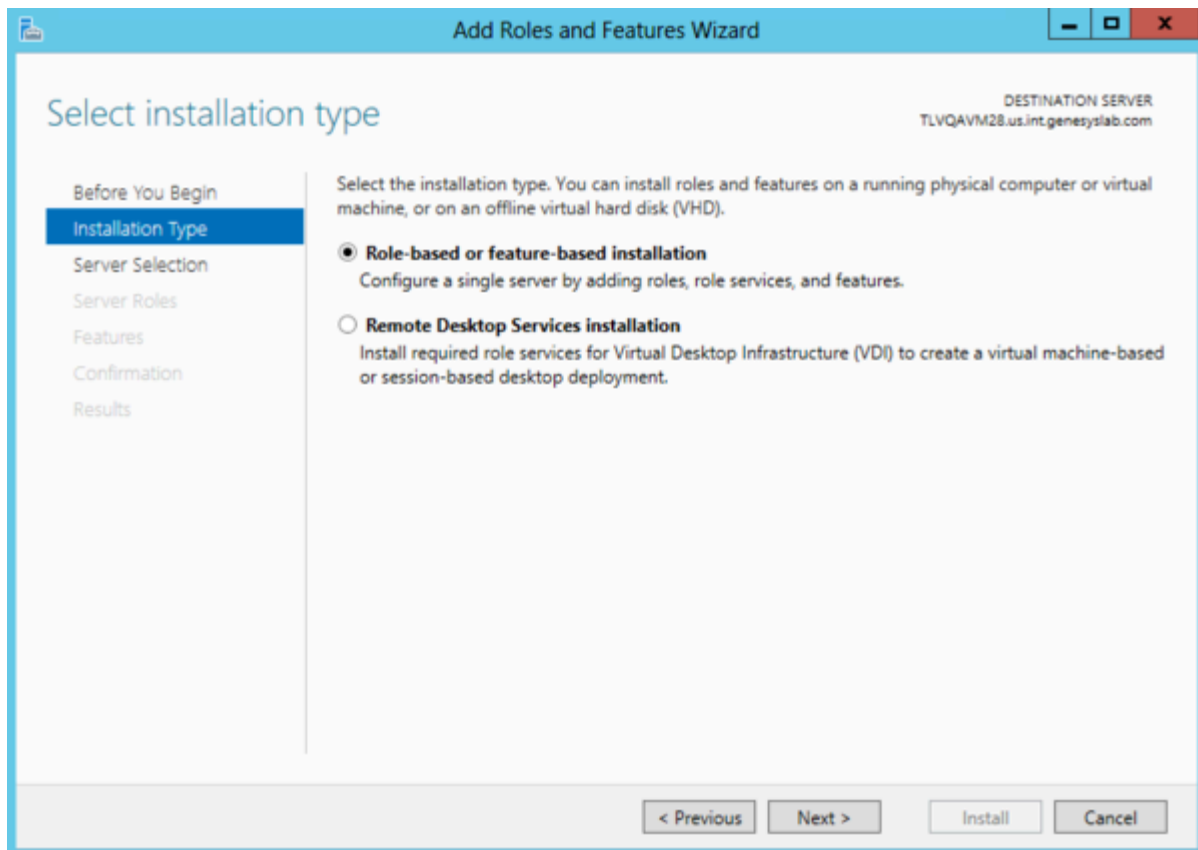
On Windows Server 2012, you can install and configure the Internet Information Services (IIS), version 8, in the **Server Manager**.

To install and configure the Internet Information Services (IIS) component:

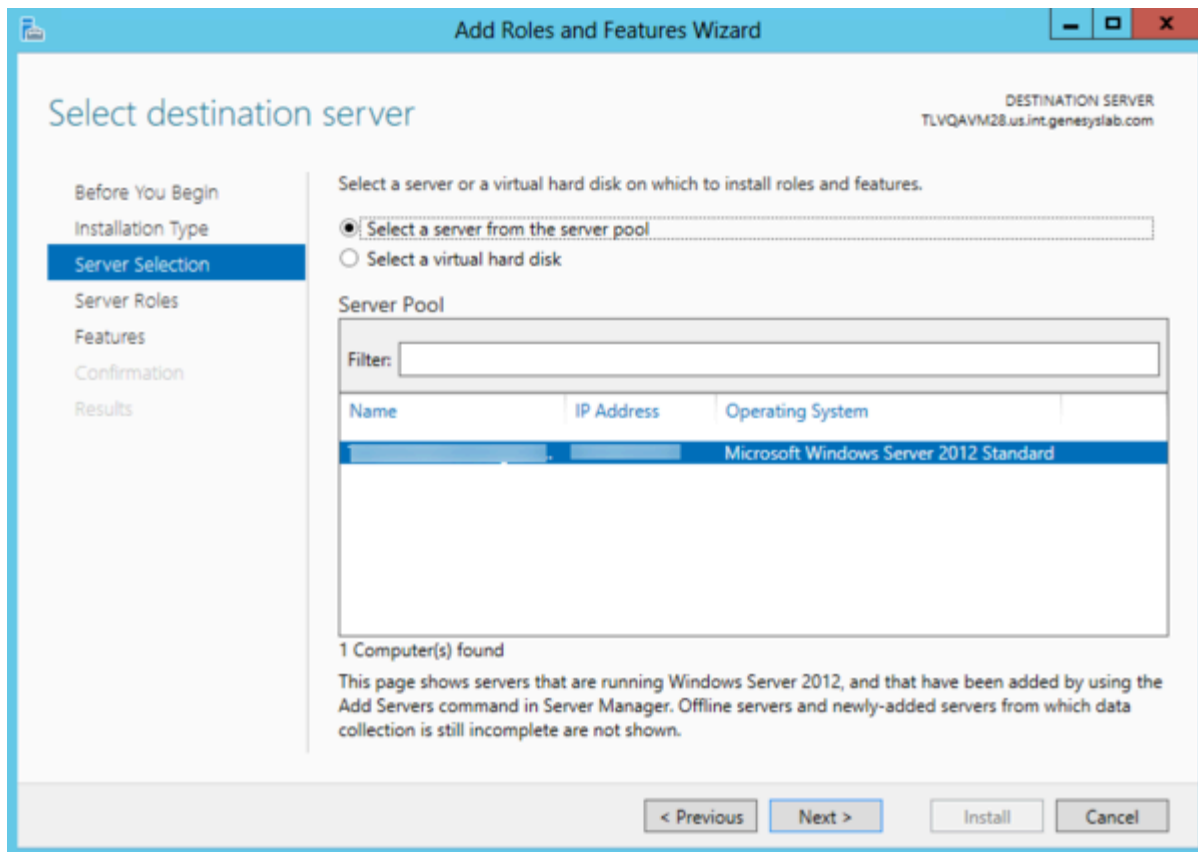
1. Open the **Server Manager**.



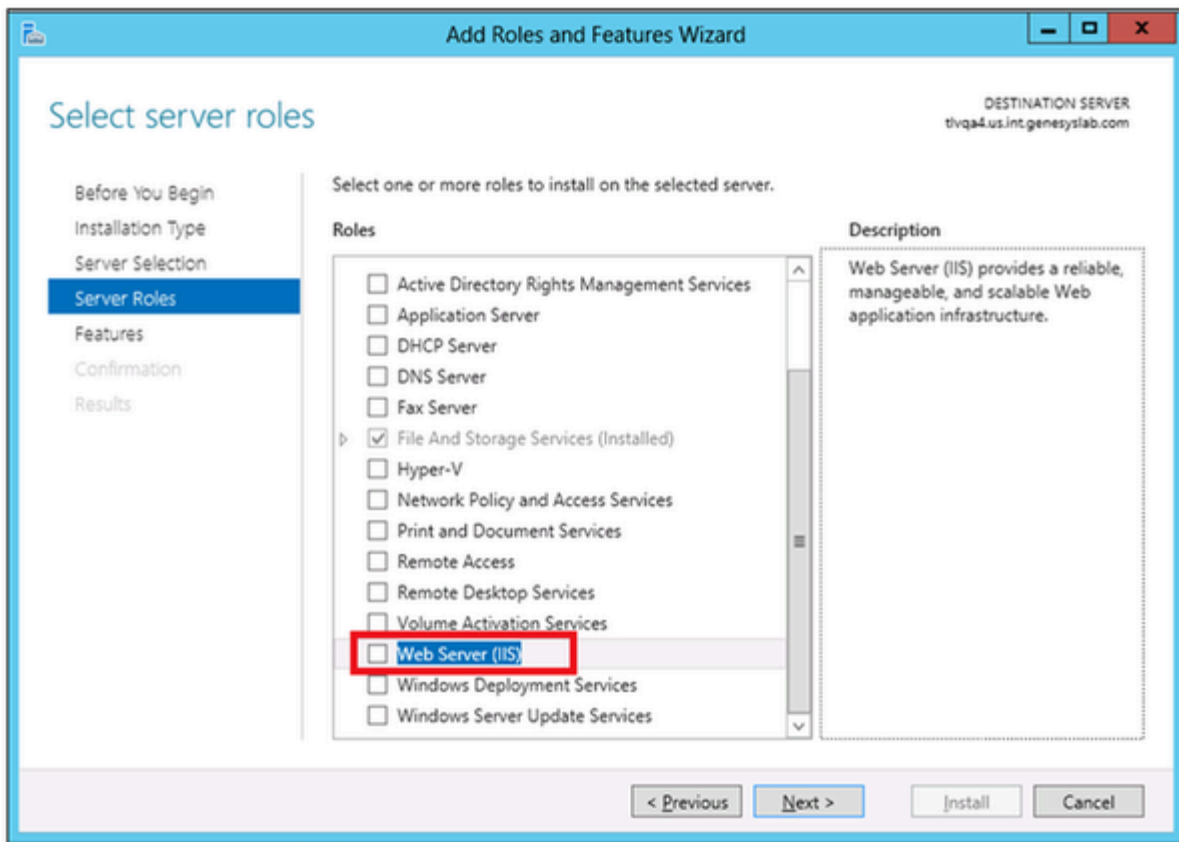
2. From the upper-right side of the window, in the **Manage** menu, select **Add Roles and Features**. The **Add Roles and Features Wizard** opens.
3. Click **Next**. The **Installation Type** screen opens.



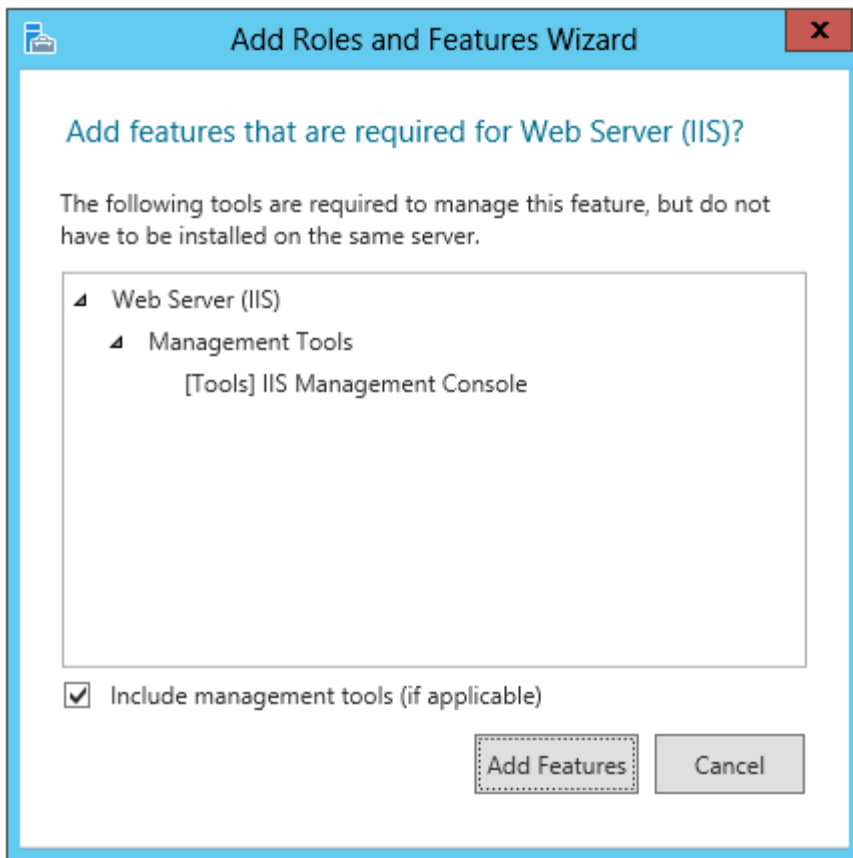
4. Select **Role-based or feature-based installation**, and click **Next**. The **Server Selection** screen opens.



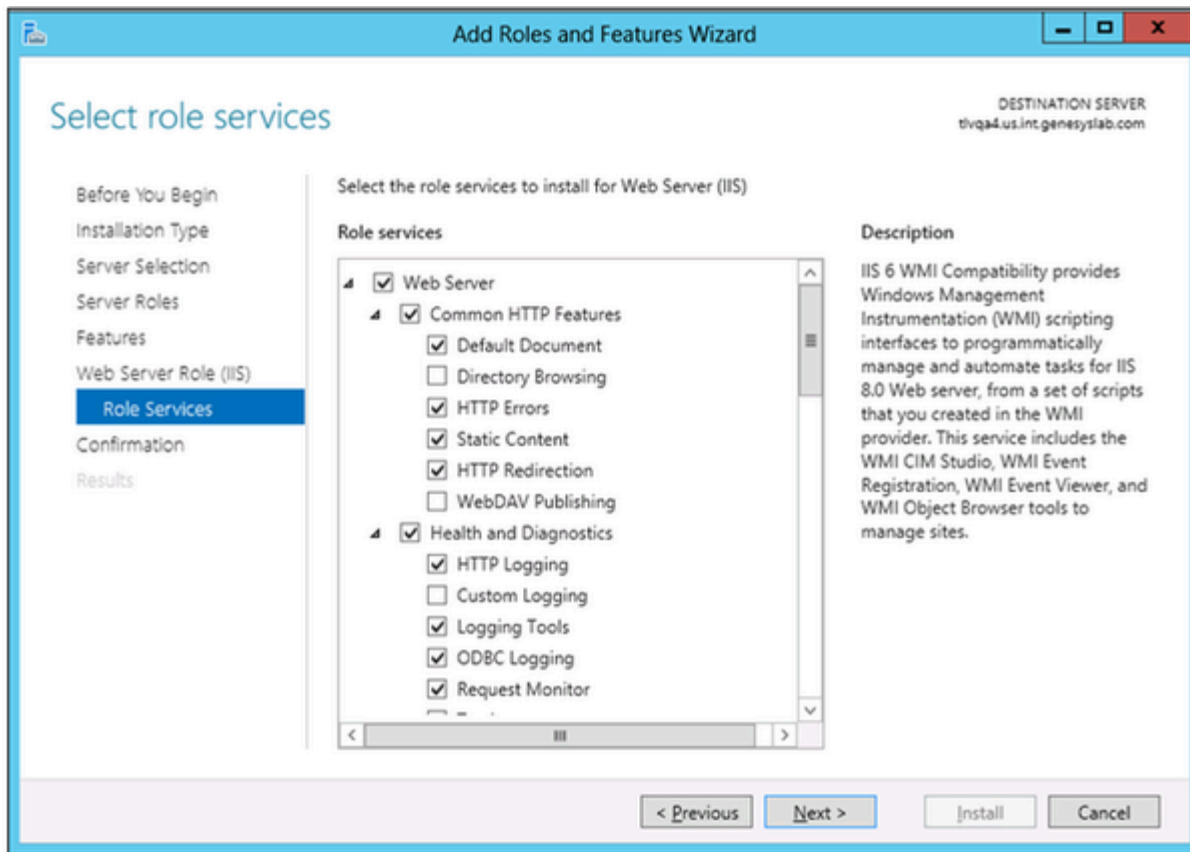
5. Verify that the **Select a server from the server pool** is selected and select the server on which you will be installing the SpeechMiner web server. Click **Next**. The **Server Roles** screen opens.



6. From the list of roles, select **Web Server (IIS)**. The following window pops up.



7. Select the **Include management tools (if applicable)** checkbox and click **Add Features**. The window closes.
8. Select **Next**. The **Role Services** screen opens.



9. From the list of **Role services**, make sure the following services are selected:

a. Under **Common HTTP Features**:

- **Static Content**
- **Default Document**
- **HTTP Errors**
- **HTTP Redirection**

b. Under **Application Development**:

- **Application Initialization**
- **ASP.NET**
- **ASP.NET Extensibility**
- **ISAPI Extensions**
- **ISAPI Filters**

c. Under **Security**:

- **Windows Authentication**

d. Under **IIS Management tools**:

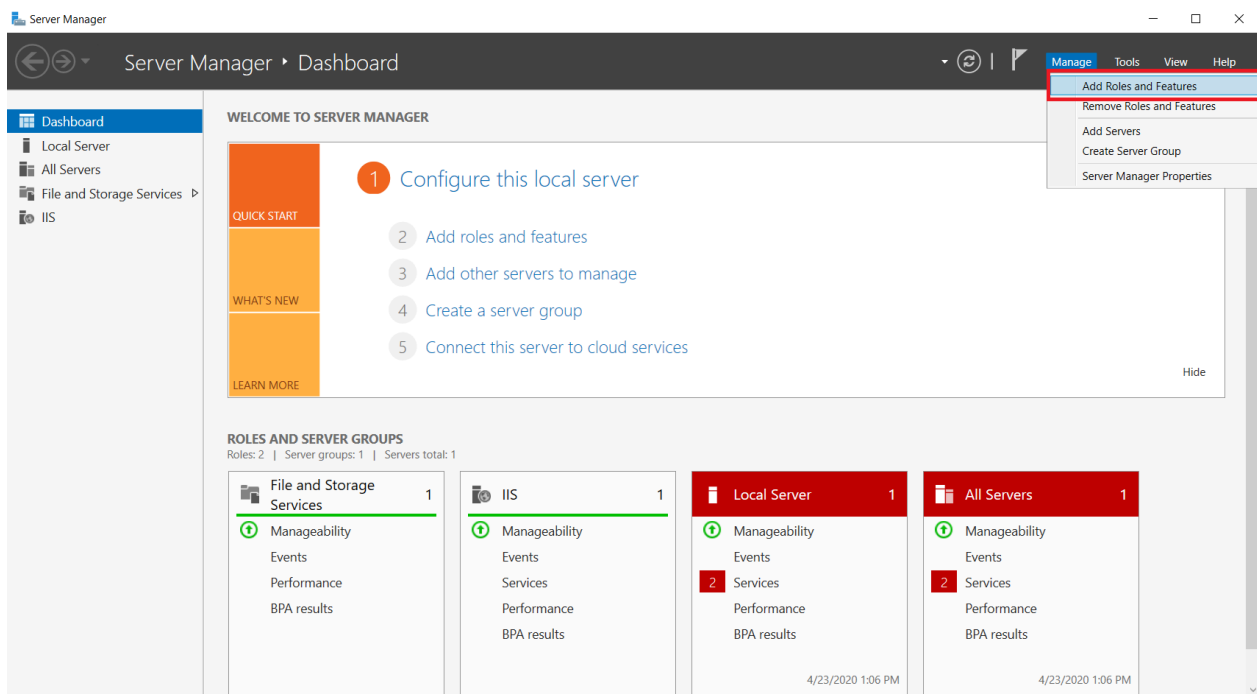
- **IIS 6 Management Compatibility**
- **IIS Management Console**

10. Select **Next** and then select **Install**. The IIS server is installed with the roles and features you selected.

## Windows Server 2016

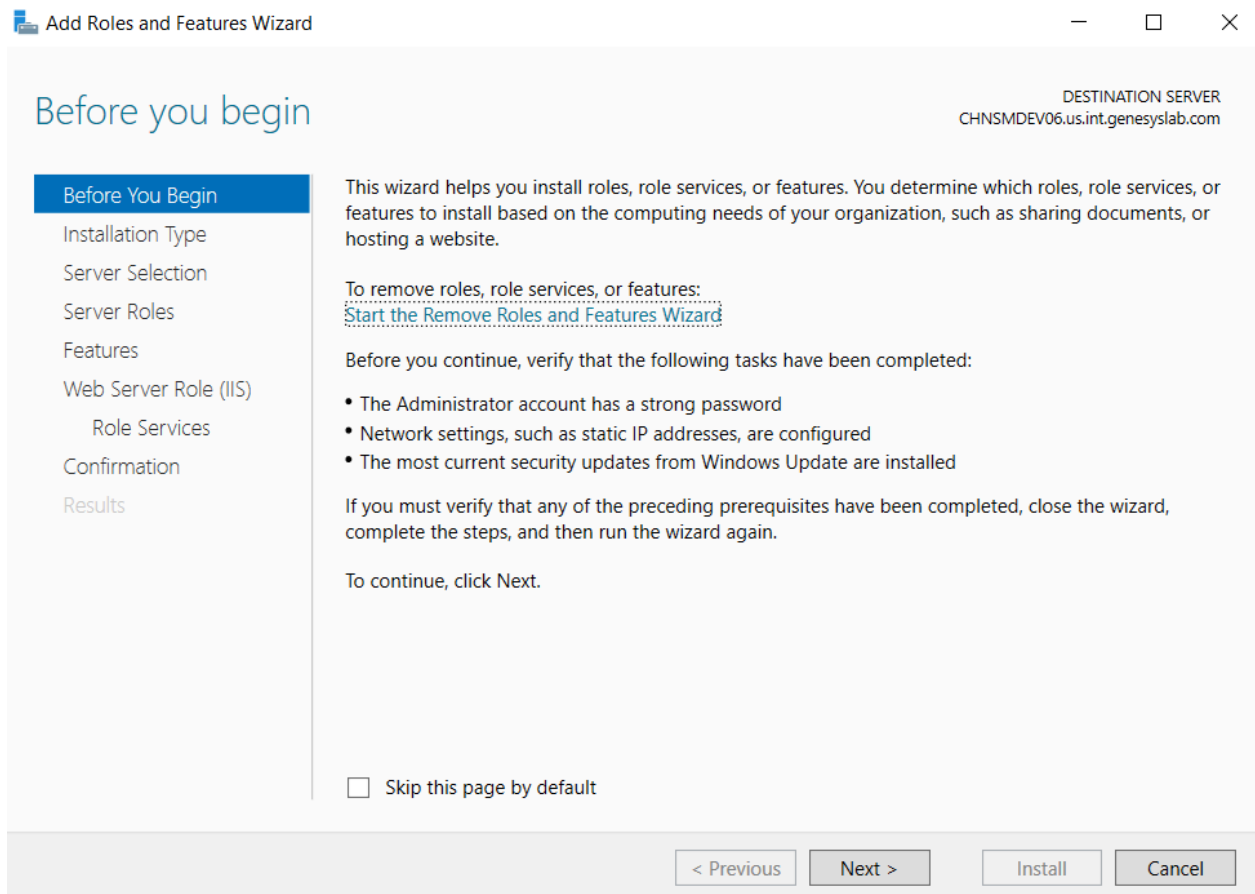
On Windows Server 2016, you can install and configure the Internet Information Services (IIS), version 8, in the **Server Manager**. To install and configure the Internet Information Services (IIS) component:

1. Open the **Server Manager**.

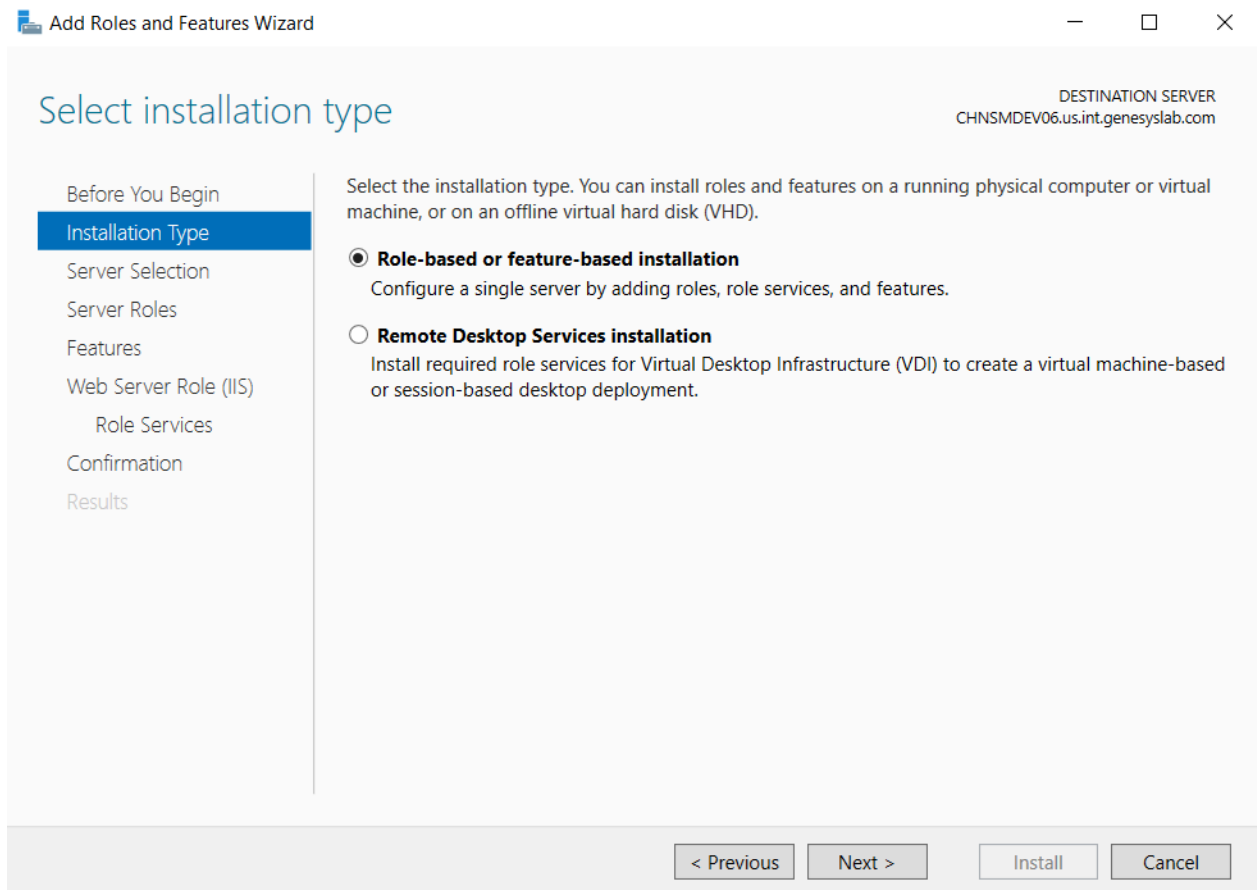


2. From the upper-right side of the window, in the **Manage** menu, select **Add Roles and Features**. The **Add Roles and Features Wizard** opens.

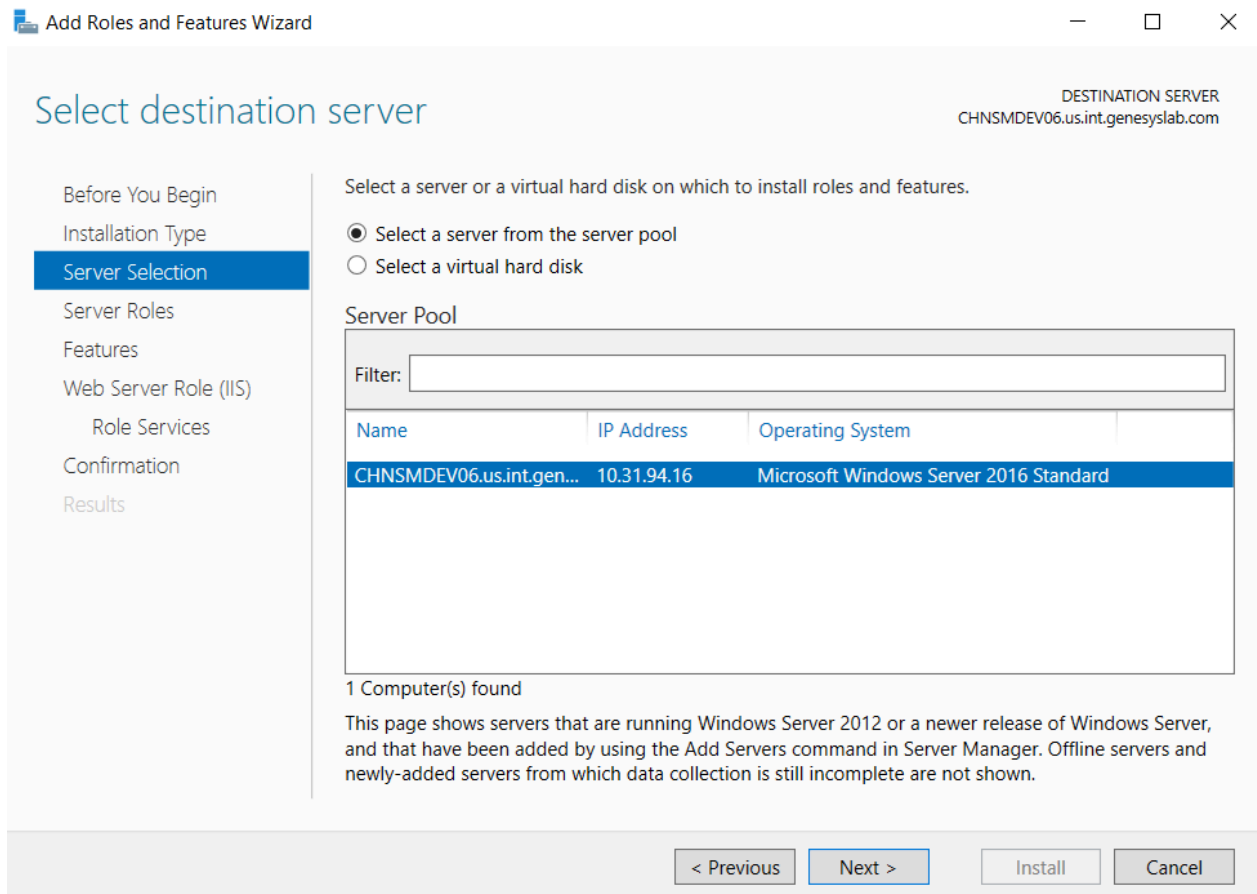




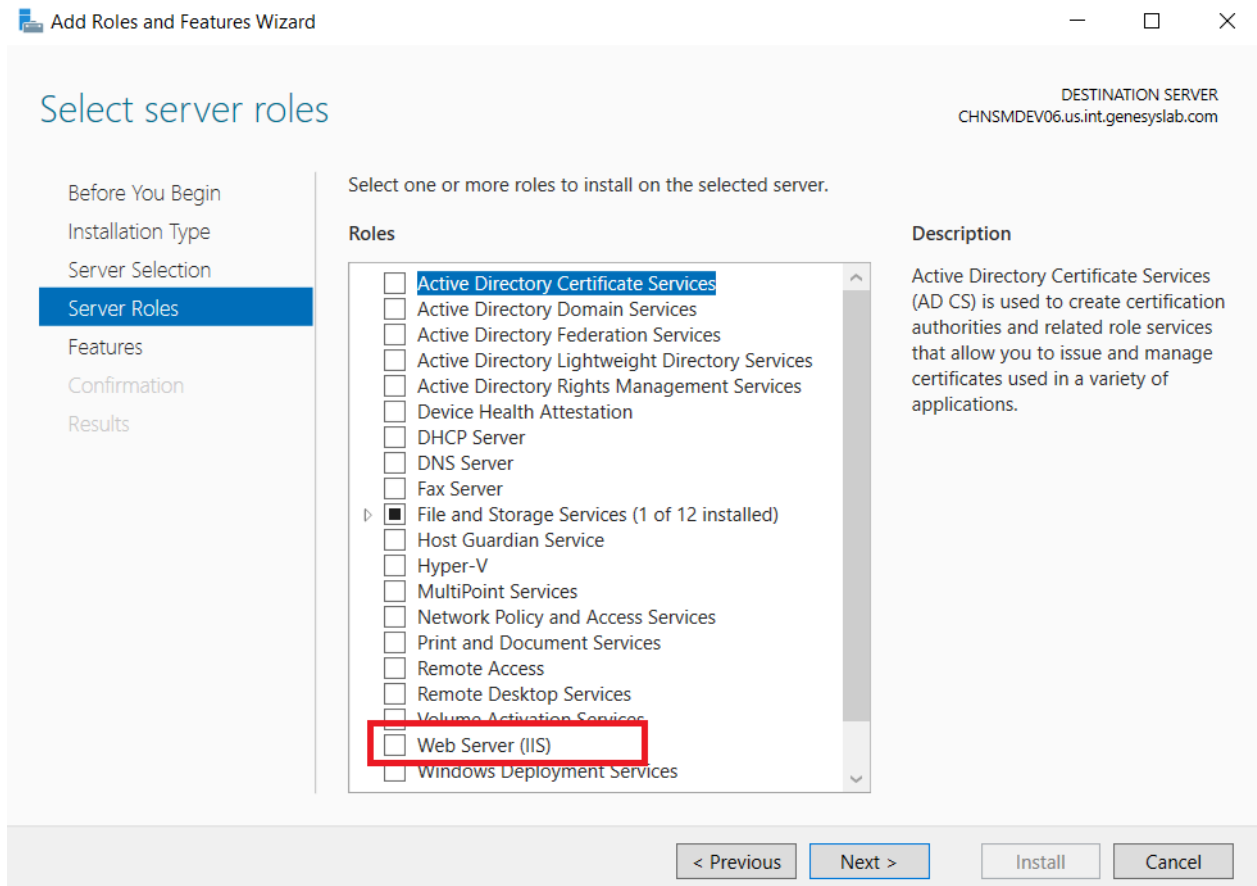
3. Click **Next**. The **Installation Type** screen opens.



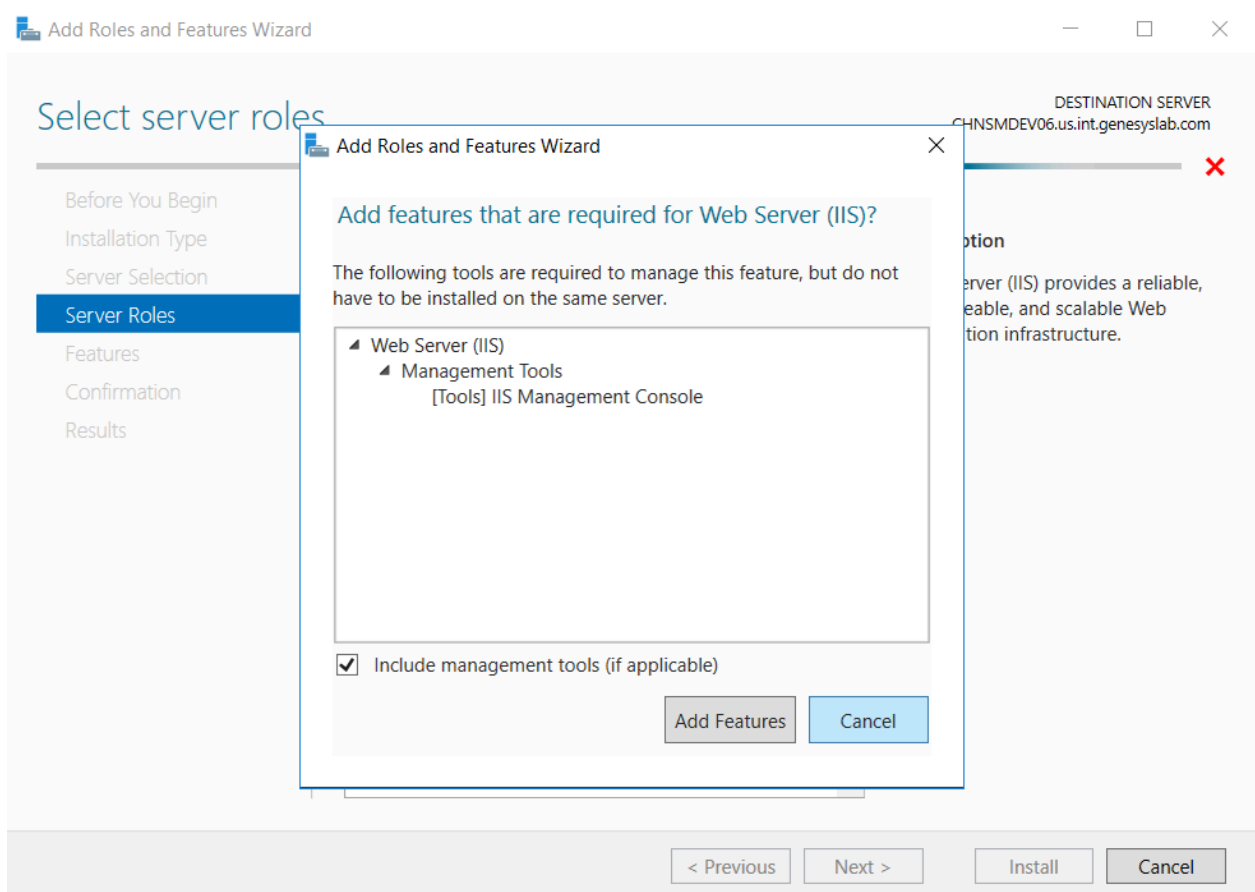
4. Select **Role-based or feature-based installation**, and click **Next**. The **Select destination server** screen opens.



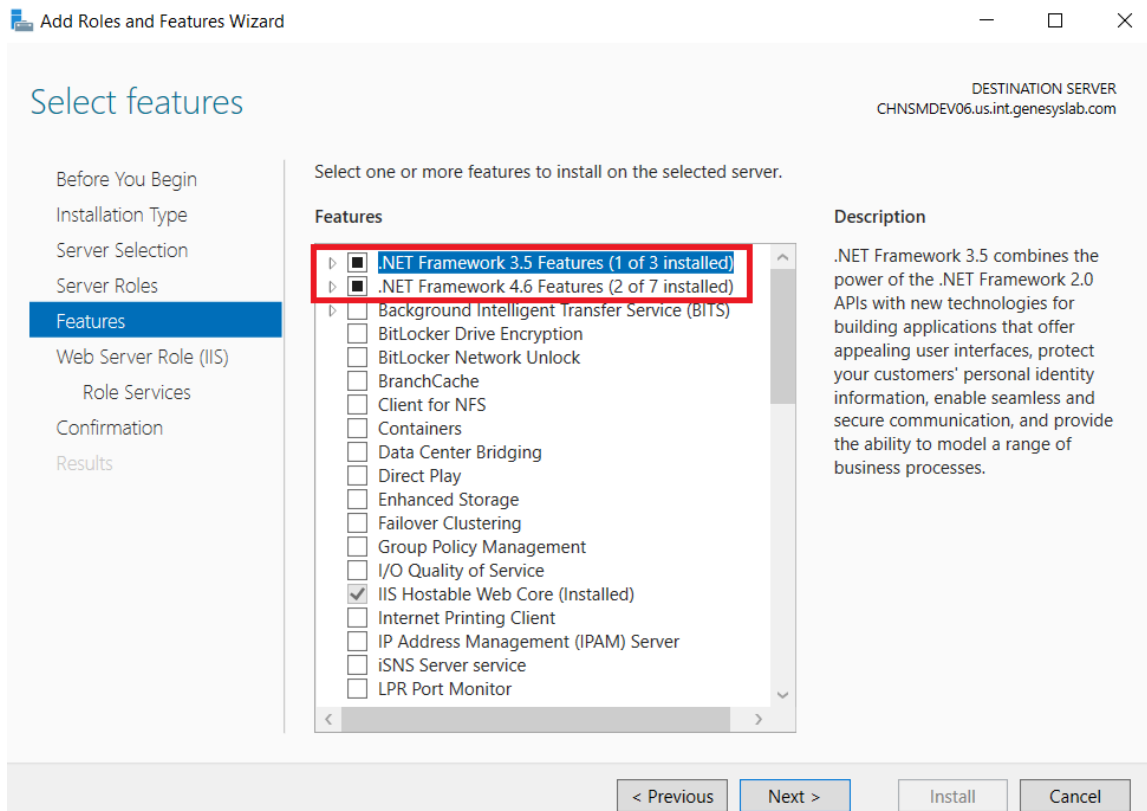
5. Select **Server Selection**, verify that **Select a server from the server pool** is selected, and select the server on which you will be installing the SpeechMiner web server. Click **Next**. The **Select server roles** screen opens.



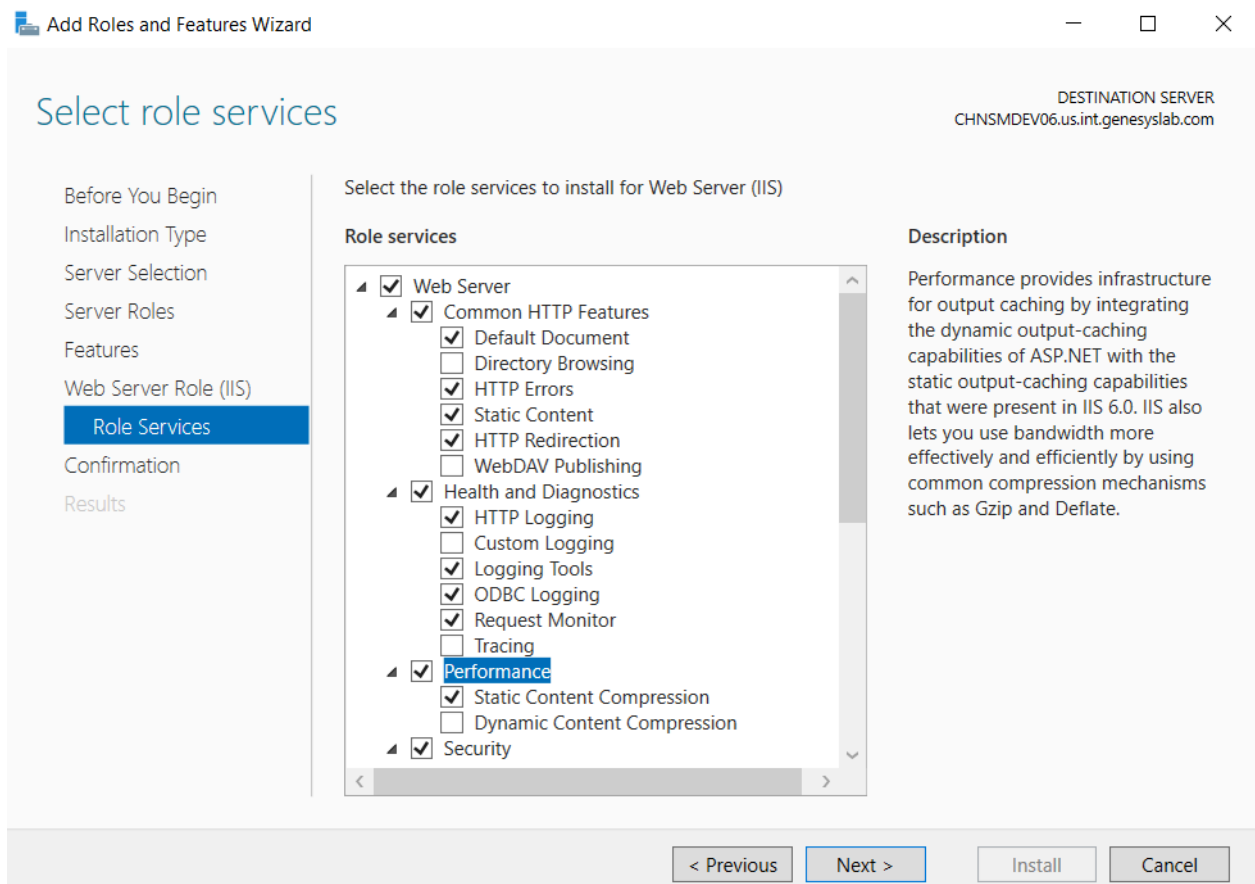
6. Select **Server Roles** and from the list of roles, select **Web Server (IIS)**. The following window pops up.



7. Select the **Include management tools (if applicable)** checkbox and click **Add Features**. The window closes and you are returned to the following **Select Features** screen.



8. Select **Features**.
9. Select **.NET Framework 3.5 features** and **.NET Framework 4.6 features**.
10. Click **Next**. The **Select roles services** screen appears.



11. From the **Role services** list, select the following services:

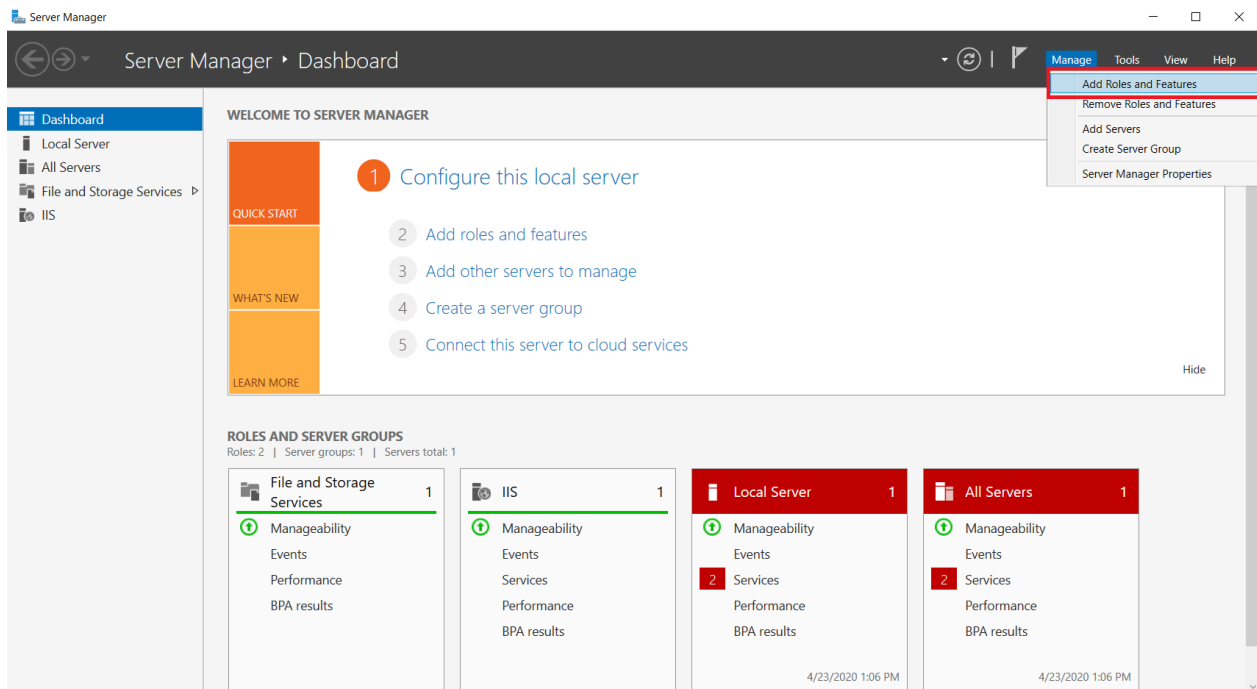
- Under **Common HTTP Features**:  
Static Content  
Default Document  
HTTP Errors  
HTTP Redirection
- Under **Application Development**:  
Application Initialization  
ASP.NET  
ASP.NET Extensibility  
ISAPI Extensions  
ISAPI Filters
- Under **Security**:  
Windows Authentication
- Under **IIS Management tools**:  
IIS 6 Management Compatibility  
IIS Management Console

12. Select **Next** and then select **Install**. The IIS server is installed with the roles and features you selected.

### Windows Server 2019

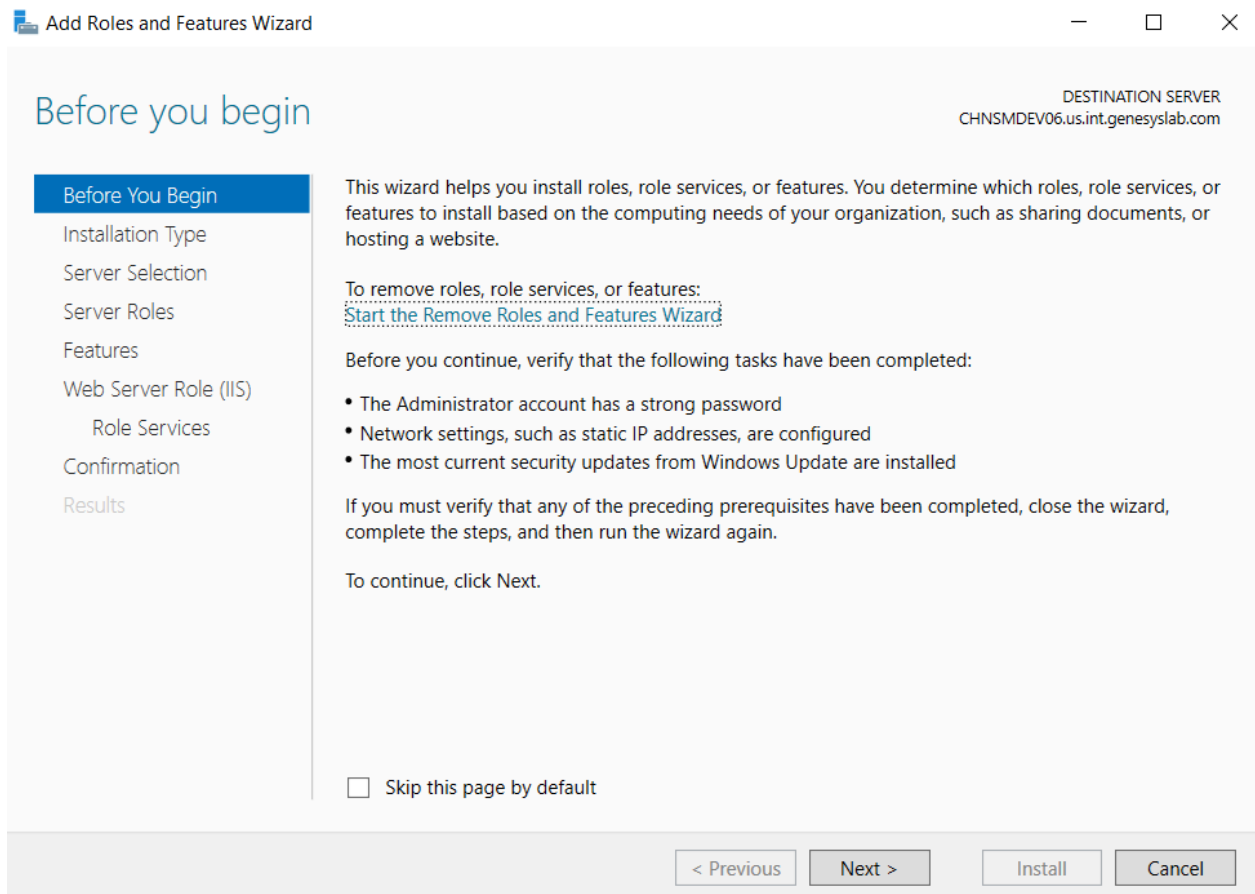
On Windows Server 2019, you can install and configure the Internet Information Services (IIS), version 8, in the **Server Manager**. To install and configure the Internet Information Services (IIS) component:

1. Open the **Server Manager**.

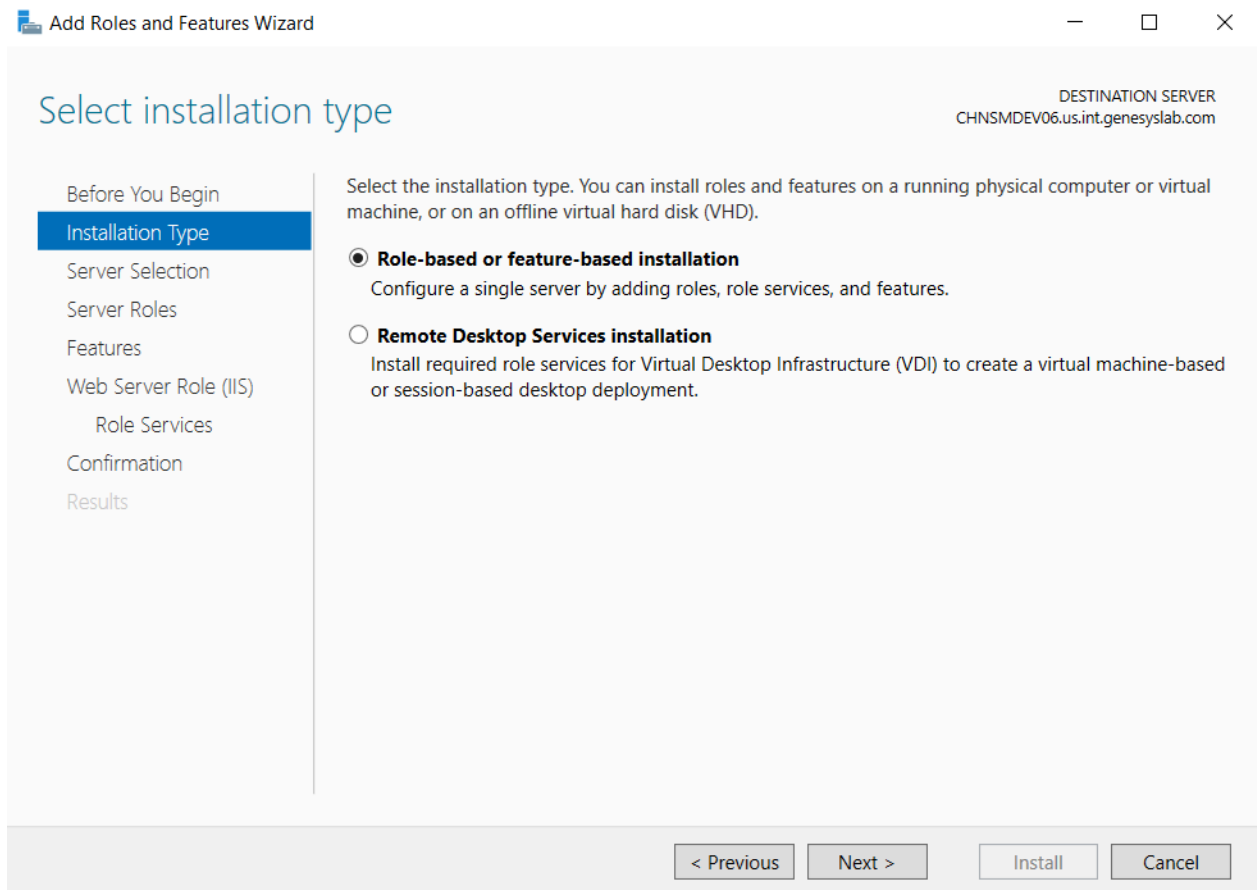


2. From the upper-right side of the window, in the **Manage** menu, select **Add Roles and Features**. The **Add Roles and Features Wizard** opens.

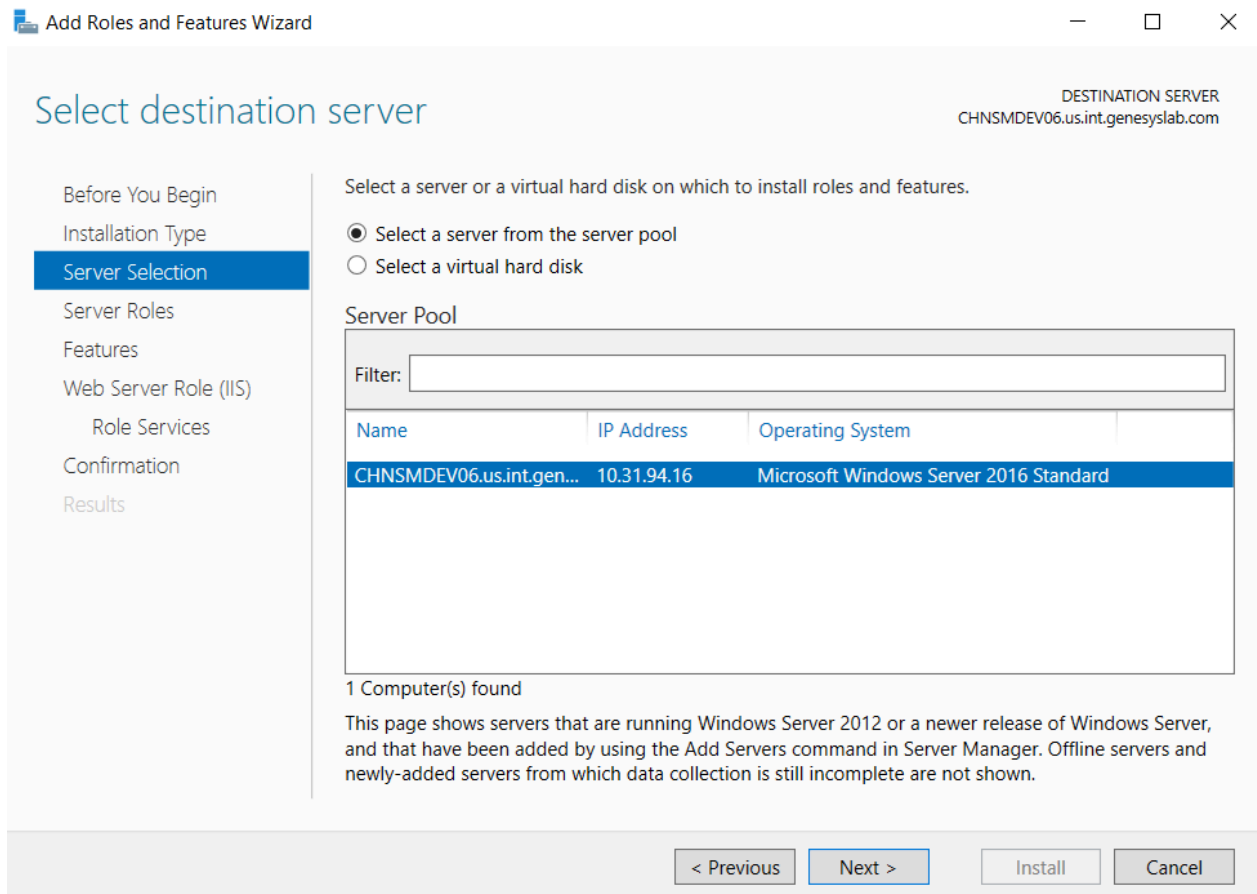




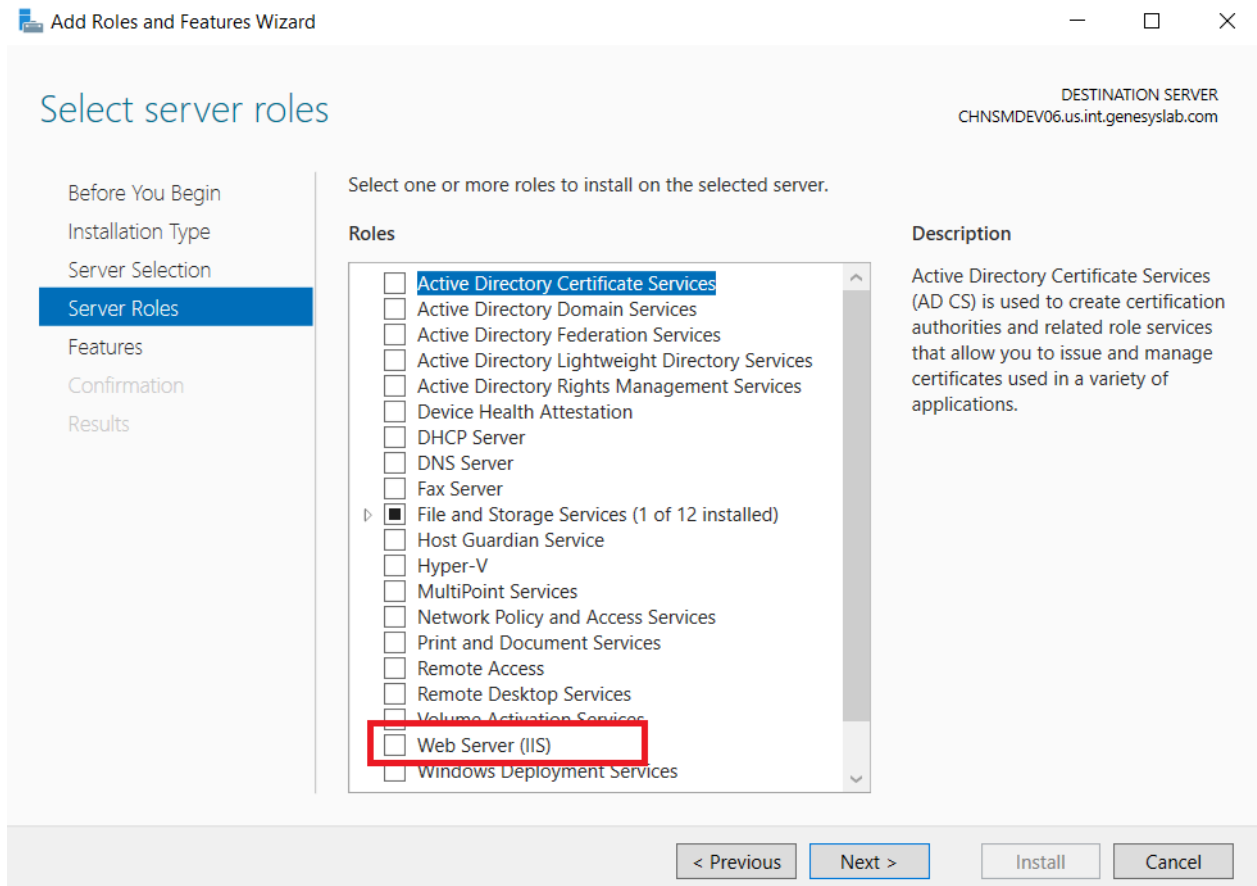
3. Click **Next**. The **Installation Type** screen opens.



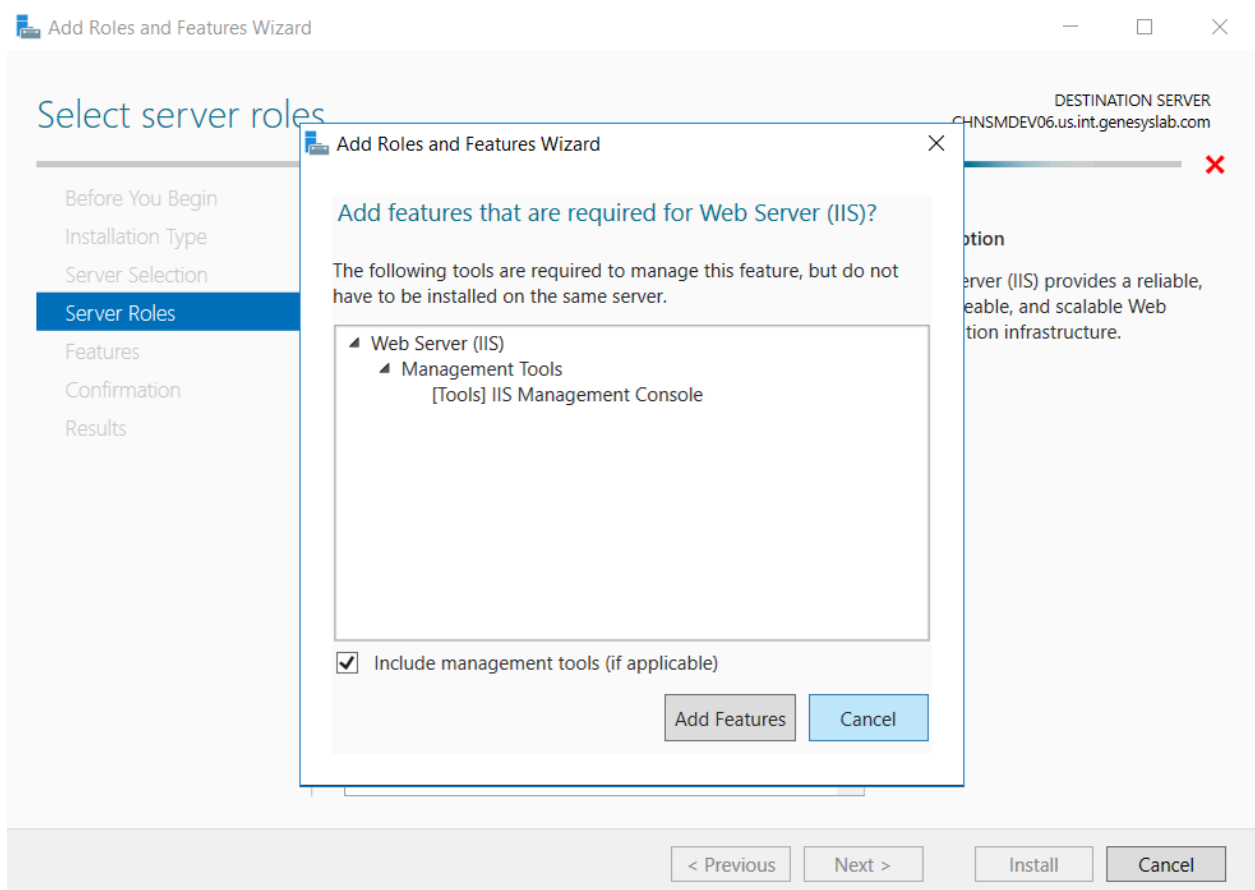
4. Select **Role-based or feature-based installation**, and click **Next**. The **Select destination server** screen opens.



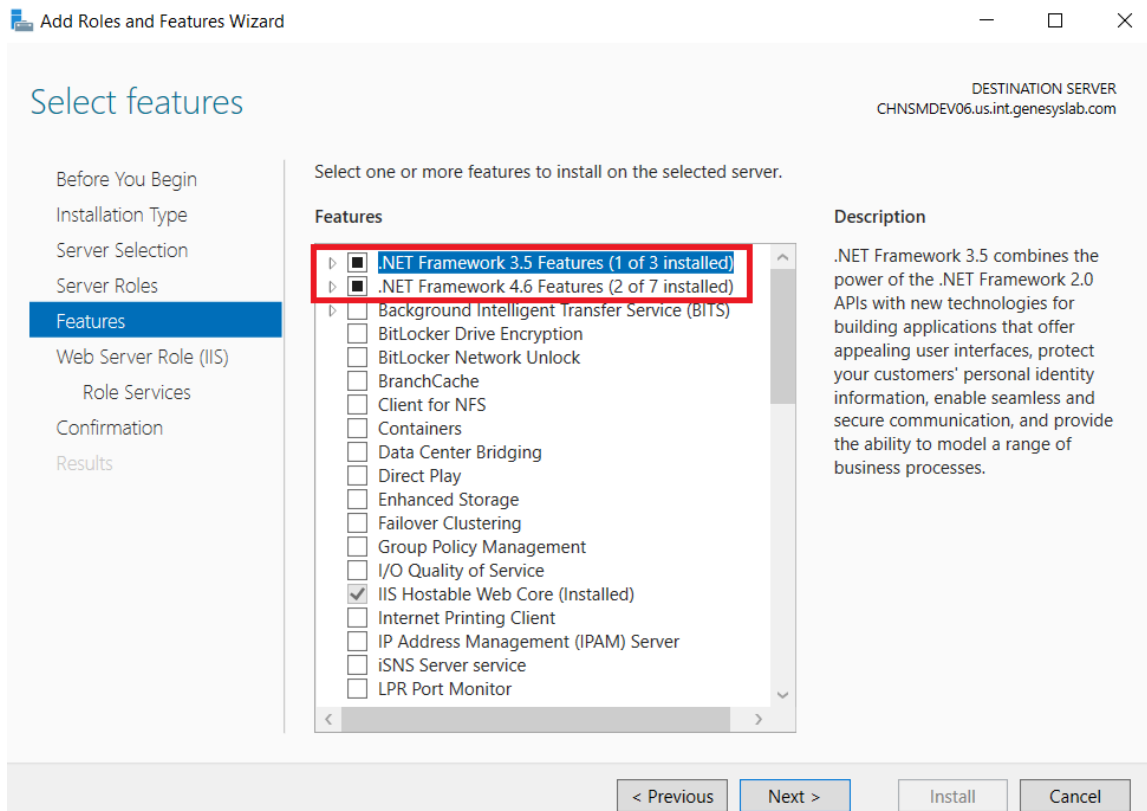
5. Select **Server Selection**, verify that **Select a server from the server pool** is selected, and select the server on which you will be installing the SpeechMiner web server. Click **Next**. The **Select server roles** screen opens.



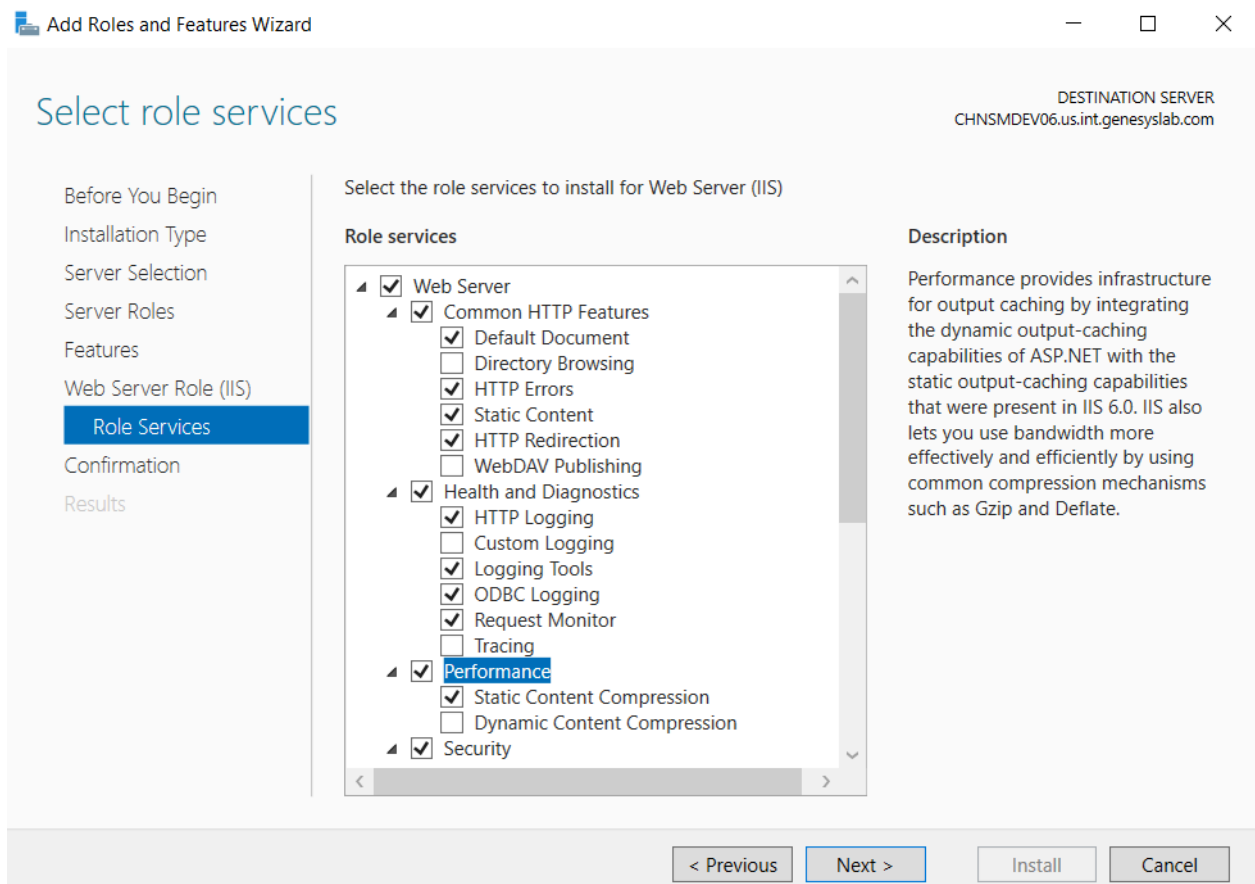
6. Select **Server Roles** and from the list of roles, select **Web Server (IIS)**. The following window pops up.



7. Select the **Include management tools (if applicable)** checkbox and click **Add Features**. The window closes and you are returned to the following **Select Features** screen.



8. Select **Features**.
9. Select **.NET Framework 3.5 features** and **.NET Framework 4.6 features**.
10. Click **Next**. The **Select roles services** screen appears.



11. From the **Role services** list, select the following services:

- Under **Common HTTP Features**:  
Static Content  
Default Document  
HTTP Errors  
HTTP Redirection
- Under **Application Development**:  
Application Initialization  
ASP.NET  
ASP.NET Extensibility  
ISAPI Extensions  
ISAPI Filters
- Under **Security**:  
Windows Authentication
- Under **IIS Management tools**:  
IIS 6 Management Compatibility  
IIS Management Console

12. Select **Next** and then select **Install**. The IIS server is installed with the roles and features you selected.

