



This PDF is generated from authoritative online content, and is provided for convenience only. This PDF cannot be used for legal purposes. For authoritative understanding of what is and is not supported, always use the online content. To copy code samples, always use the online content.

SpeechMiner Administration Guide

Configuring Permissions

Configuring Permissions

This section describes the permissions that must be set for the functional SpeechMiner domain user (SMUSER) and for users of SMART.

UPlatform

Configuring Permissions for UPlatform

SpeechMiner uses a domain user account as the credentials for all the registered SpeechMiner services. Your IT department must be able to create this account for you. The domain user must have assigned permissions on all machines on which the UPlatform service will run, as described below. The user account must be created and assigned the required permissions before you begin configuring SpeechMiner.

Important

In this guide, this functional user account is called **SMUSER**.

Groups

SMUSER must be added to the following groups:

- Power Users
- Performance Monitor Users (if this group exists on the machine)

Folder Properties

In the Properties of the following folders, assign permissions to SMUSER, as follows:

Important

Tab indicates the tab in the **Properties** dialog box in which the permission can be assigned.

Folder	Tab	Permission	Comments
Genesys installation folder	Security	Modify	Usually C:\Program Files (x86)\Genesys\Software
Genesys data folders	Security	Modify	For example, C:\data - where the data\input and data\filtered folders are located
Genesys data folders	Sharing	Change	For example, C:\data - where the data\input and data\filtered folders are located
C:\Program Files (x86)\Genesys\Software\utopy\product\WEB	Security	Read/Write	This is for the impersonation user specified in the web.config file.

SMART

Configuring Permissions for SMART

Any user who will run SMART should have the following permissions:

Folder	Permission	Comments
SpeechMiner installation folder	Read/write	Usually C:\Program Files (x86)\Genesys\Software
Package Root Path	Read/write	The path configured in the Packages folders text box in the Sites and Machines section.

In addition, all SMART users should have permission to use .net encryption. To add this, an administrator can run the following command on the local user workstation:

```
aspnet_regiis -pa "NetFrameworkConfigurationKey" "{domain}\{user}"
```

Web Server

Configuring Permissions for the Web Server

Once you have installed the SpeechMiner web server, you should set the following permissions:

- On the folder **C:\Windows\Microsoft.NET\Framework\v2.0.50727\Temporary ASP.NET Files**, set Modify permissions to the domain user that SpeechMiner will impersonate (For the SMUSER, see **UPlatform**).
- Set read/write/modify permissions to the IIS user/group (IIS_IUSRS in Windows server 2008 and above) and the operational domain user (SMUSER) on the SpeechMiner installation folder.
- Set read/write/modify permissions to the IIS user/group (IIS_IUSRS in Windows server 2008 and above) on the windows temp folder.

Directories Used by ASP.NET

Give SMUSER access permissions to the IIS metabase and other directories used by ASP.NET. To do this, an administrator can run this command:

```
c:\Windows\Microsoft.NET\Framework64\v4.0.30319\aspnet_regiis.exe -ga  
"{domain}\{user}"
```

Report Server

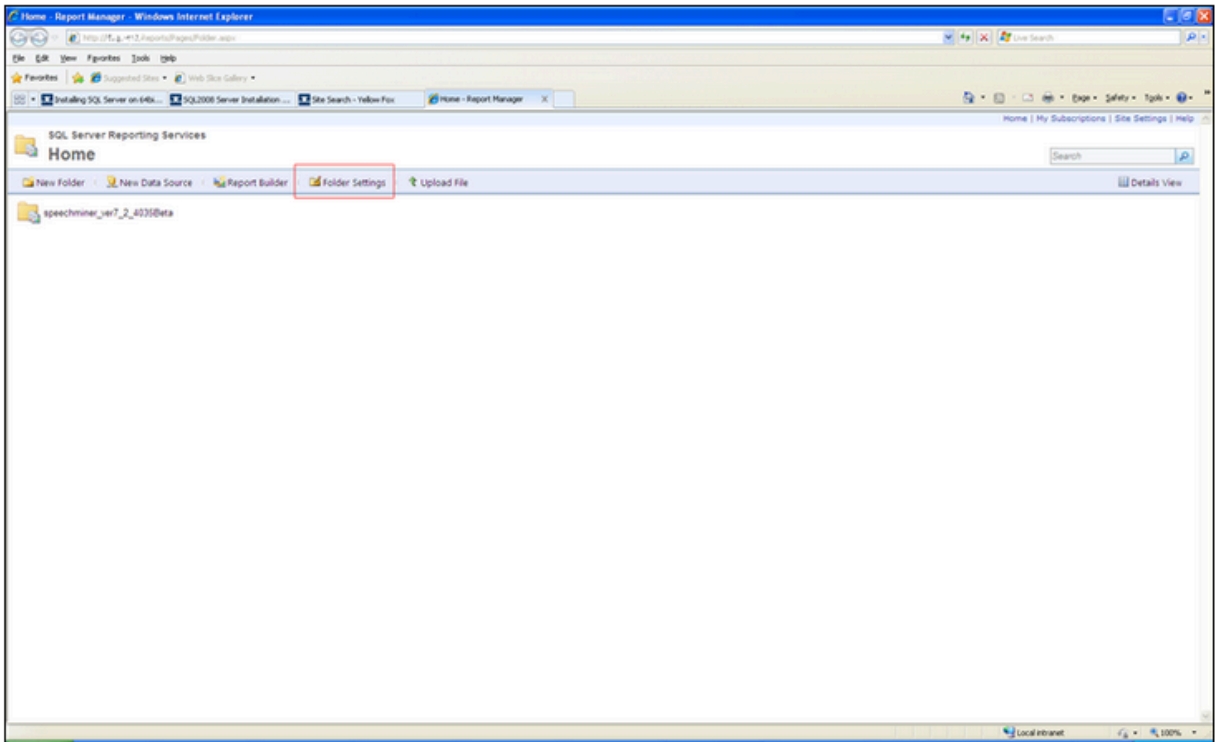
Configuring Permissions for the Report Server (Pre SQL Server 2019)

On the report server, assign the Content Manager role to SMUSER, as follows:

1. On the database server, open a browser, and navigate to **//<database server name>/reports**. The **SQL Server Reporting Services** manager opens.

Important

If the Windows UAC (User Account Control) is active on the server, open the browser by right-clicking its icon and then selecting **Run as administrator**.

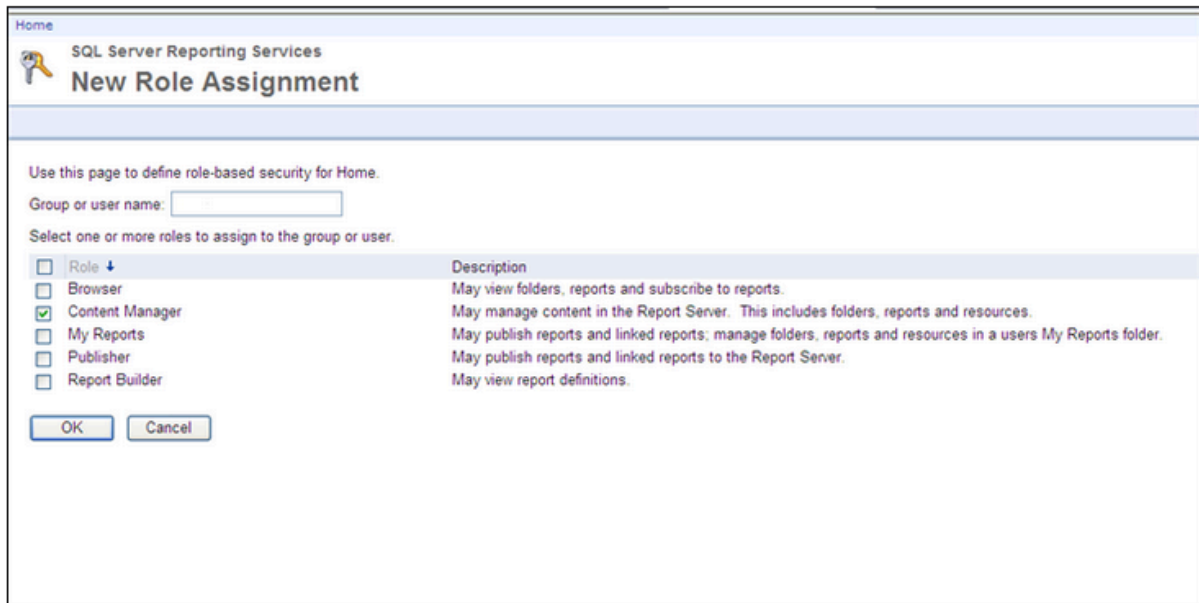


2. Select the **Folder Settings** tab.

Important

If you cannot access this folder, because you are repeatedly asked for your credentials, and then the screen turns blank, do the following: In `rsreportserver.config`, remove the value `RSWindowsNegotiate` and ensure that `RSWindowsNTLM` is specified. (For more information about this problem, and some other solutions, see <https://docs.microsoft.com/en-us/sql/reporting-services/security/configure-windows-authentication-on-the-report-server?view=sql-server-ver15>)

3. If `SMUSER` is not on the list, click **New Role Assignment** and add it. If it is on the list, click **Edit** to edit the existing account settings.
4. Select **speechminer database > sme**.
5. In the **Security** tab, click **New Role Assignment**. The **New Role Assignment** tab opens.
6. In **Group or user name**, enter the user name (`SMUSER`).
7. Select the **Content Manager** checkbox.

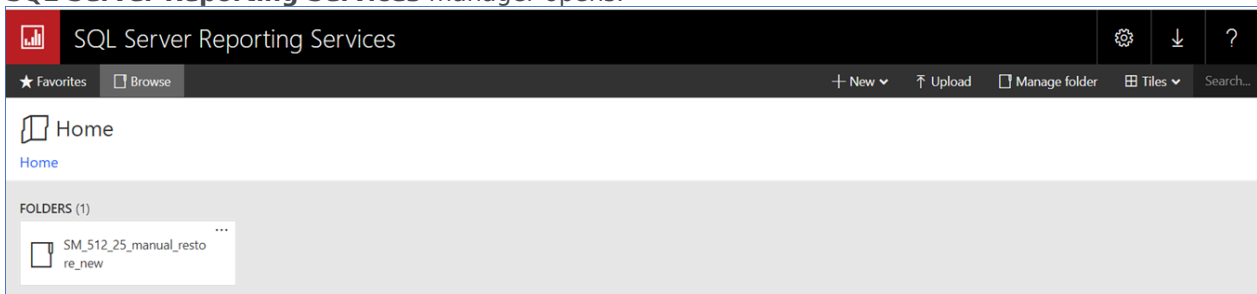


8. Click **OK**. The Content Manager role is assigned to SMUSER.

Configuring Permissions for the Report Server for SQL Server 2019

On the report server, assign the Content Manager role to SMUSER, as follows:

1. On the database server, open a browser, and navigate to `//<database server name>/reports`. The **SQL Server Reporting Services** manager opens.



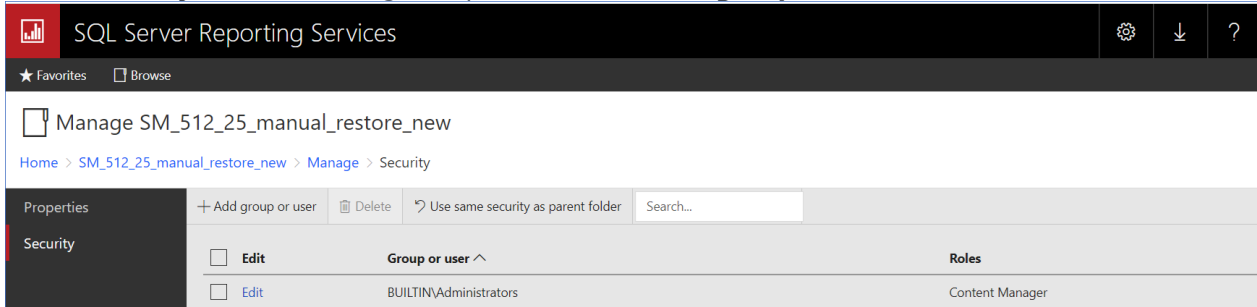
2. Right-click on the database folder and click **Manage**.

Important

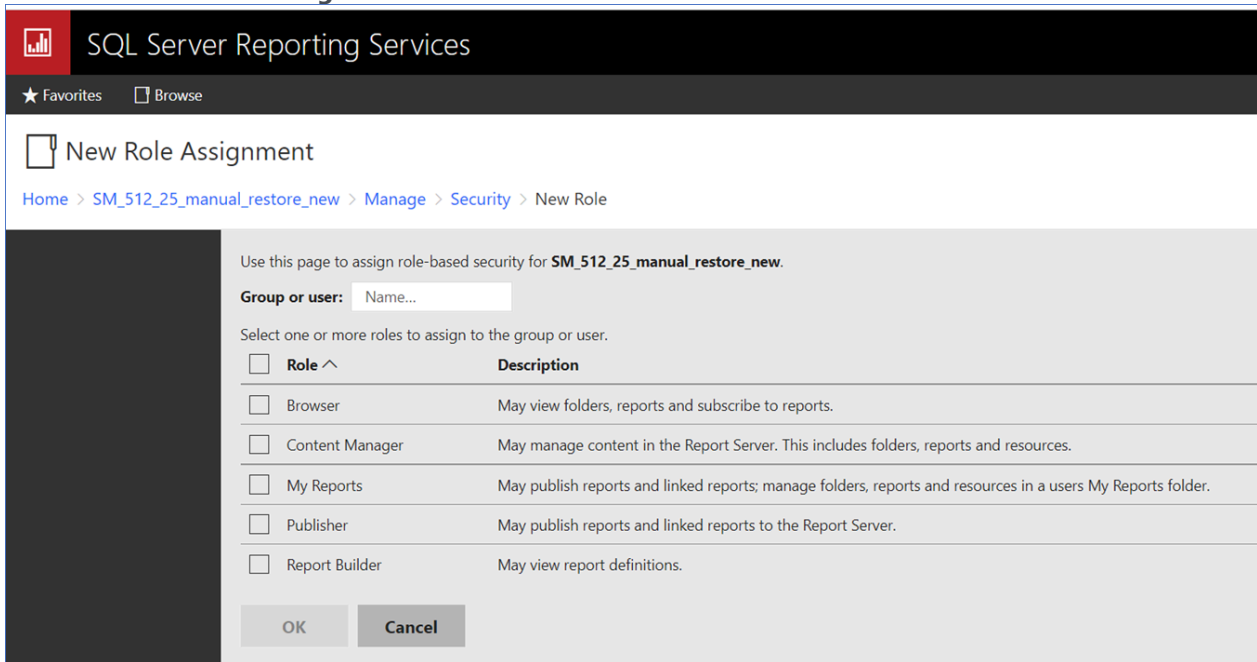
To configure permission at the Home level, click **Manage folder**

and follow the steps below.

3. Select **Security** on the left navigation panel and click **Add group or user**.



4. In **Group or user**, enter the user name (SMUSER).
5. Select the **Content Manager** checkbox.



6. Click **OK**. The Content Manager role is assigned to SMUSER.