



This PDF is generated from authoritative online content, and is provided for convenience only. This PDF cannot be used for legal purposes. For authoritative understanding of what is and is not supported, always use the online content. To copy code samples, always use the online content.

# SMART User Manual

Logging into SMART

12/20/2025

# Logging into SMART

As soon as you log into SMART the roles and groups that are assigned to your account are automatically verified. Roles notify the system about which SMART functions and features you are allowed to access. Only categories, programs and topics that you have permissions to view are displayed in your SMART account.

## Before you begin

- Verify that SMART is installed on your computer.
- Verify that your user privileges enable you to work with SMART. To work with SMART you must have a SpeechMiner, Windows or Genesys account.

## Procedure



1. Double-click the SMART desktop icon.

The SMART title screen appears and the Login window opens.




2. Select a SpeechMiner user account:
  - **SpeechMiner Authentication:** requires a SpeechMiner username and password.
  - **Windows Authentication:** requires your Windows username and password.
  - **Genesys Authentication:** requires a Genesys username and password.
3. Type your username and password in the **Username** and **Password** fields.

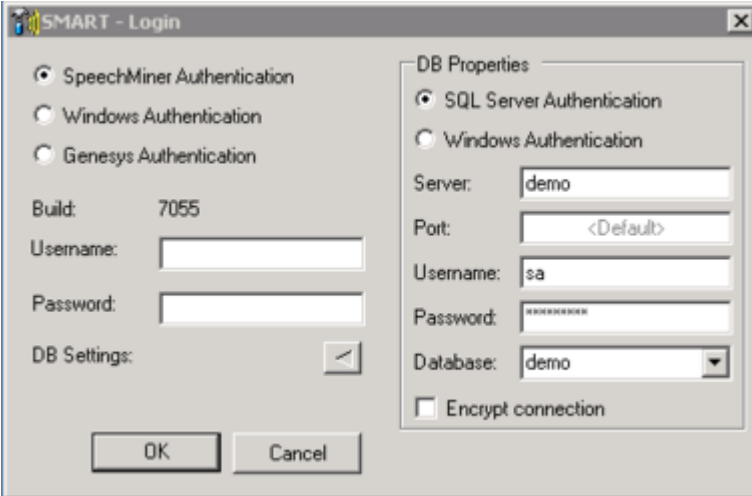
If you selected Windows Authentication, the username is automatically entered into its respective field. The username is *domain\username*.

### Important

If you do not need to set or modify the Database Properties, skip steps 4 and 5

4. When first logging into SMART, or to change an existing database, click **DB Settings**  to select the **database** that represents your Line of Business.

The SMART Login window expands.



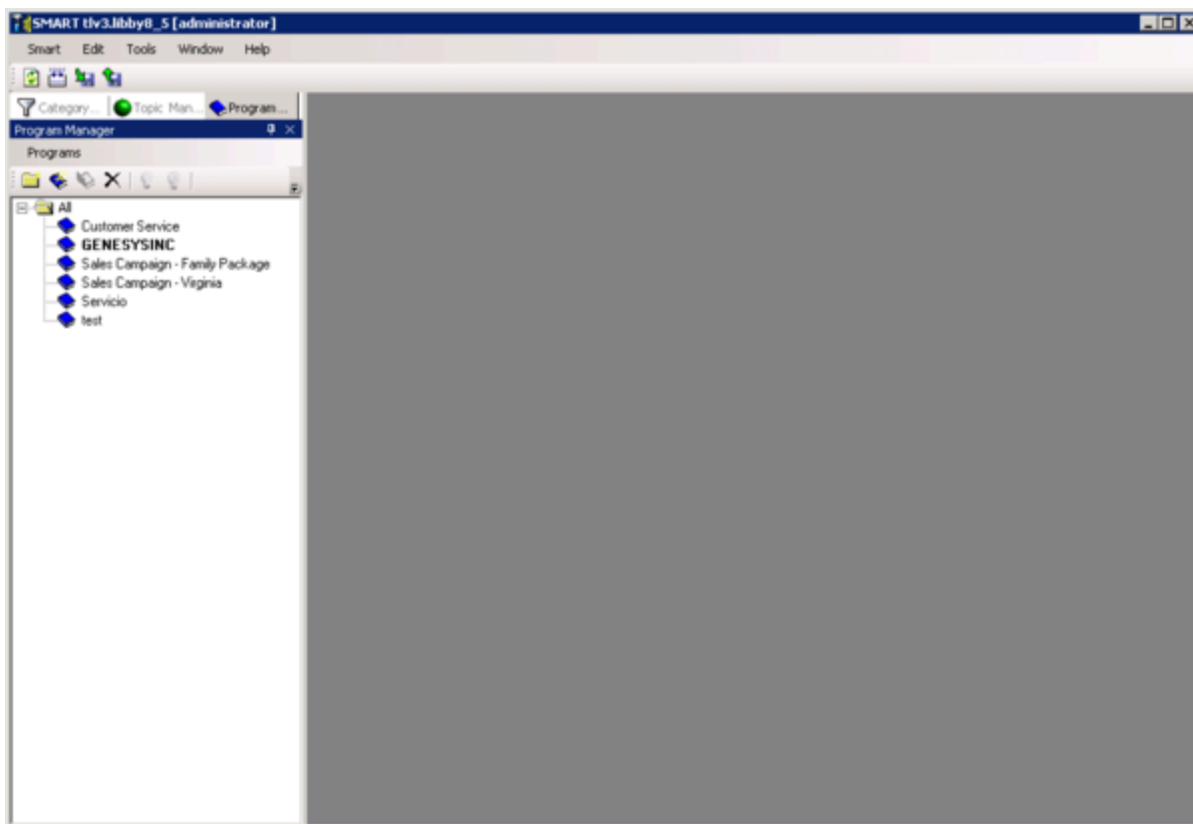
The image shows the SMART - Login dialog box. It has two main sections. The left section contains three radio buttons for authentication: 'SpeechMiner Authentication' (selected), 'Windows Authentication', and 'Genesys Authentication'. Below these are fields for 'Build' (7055), 'Username', 'Password', and a 'DB Settings' button with a right-pointing arrow. At the bottom are 'OK' and 'Cancel' buttons. The right section is titled 'DB Properties' and contains two radio buttons: 'SQL Server Authentication' (selected) and 'Windows Authentication'. Below these are fields for 'Server' (demo), 'Port' (<Default>), 'Username' (sa), 'Password' (masked with asterisks), and a 'Database' dropdown menu (demo). At the bottom of this section is an 'Encrypt connection' checkbox.

5. Use the following reference table to fill in the **DB Properties** fields:

Field	Description
SQL Server Authentication / Windows Authentication	The type of authentication required to connect to the SQL server.
Server	The name of the Database server.
Port	The Port number used to connect to the database server.
Username	The username required to connect to the database server.
Password	The password required to connect to the database server.
Database	The name of the database server.
Encrypt Connection	Activates encryption. (optional)

6. Click **OK** to log into SMART.

The SMART Main window opens.



For additional information about your SpeechMiner user account and permissions, refer to the [SpeechMiner User Manual](#) or contact your SpeechMiner System Administrator.

### Related Topics

[SMART Overview](#)  
[Programs](#)  
[Topics](#)  
[Categories](#)