



This PDF is generated from authoritative online content, and is provided for convenience only. This PDF cannot be used for legal purposes. For authoritative understanding of what is and is not supported, always use the online content. To copy code samples, always use the online content.

iWD Data Mart Reference Guide

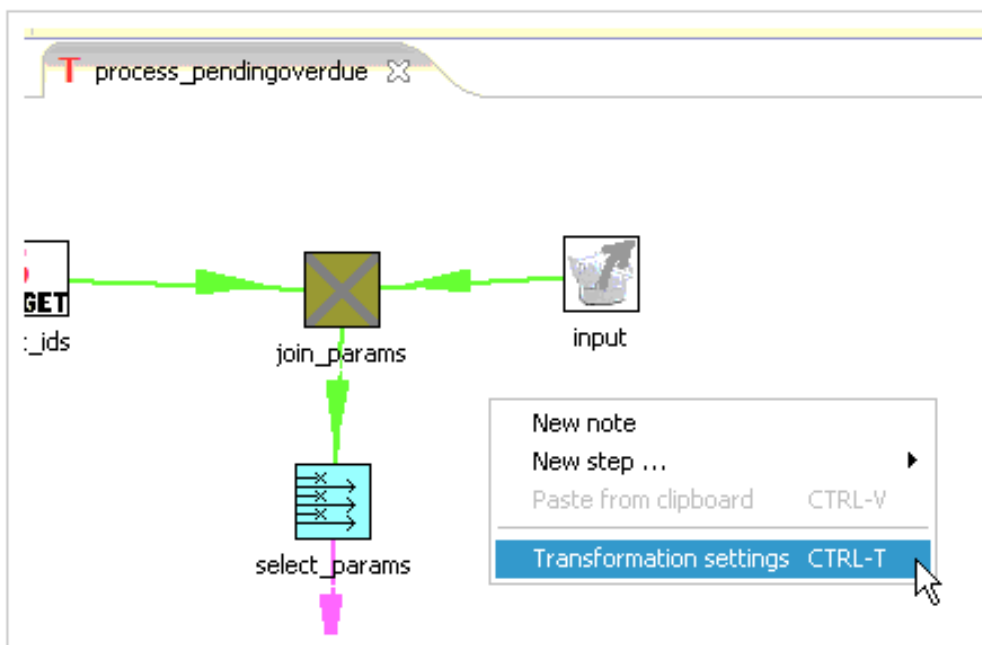
Customization Example

12/15/2025

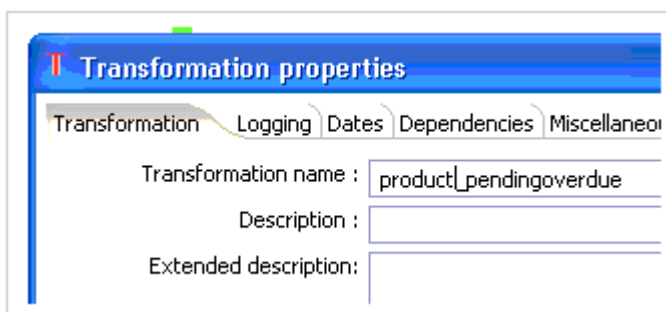
Customization Example

This example creates a new statistic transformation script, `product_pending overdue.ktr`, that calculates how many pending and overdue tasks there are for a particular product. You start by copying the `process_pendingoverdue` transformation script, which calculates similar statistics for the **PROCESS** dimension. This script references the **TASK_CLASSIF_FACT** subject area, which supports a join to the **PRODUCT** dimension.

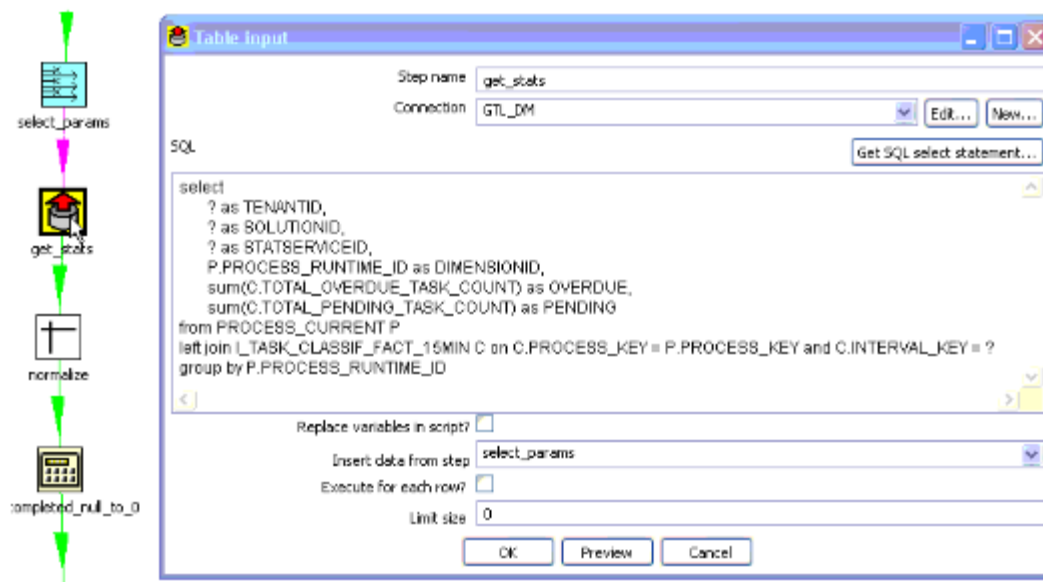
1. In the `aggregate_stats\stats` subdirectory, copy the `process_pending overdue.ktr` transformation script and rename it as follows: `product_pendingoverdue.ktr`
2. Open this script in Kettle ETL Designer.
3. Within the Transformation window, right-click and select Transformation Settings from the context menu (shown below) to open the Transformation properties dialog box.



4. Rename the transformation appropriately and click OK. The figure below uses the name `product_pendingoverdue`.



5. Double-click the `get_stats` step to open the Table input dialog box that is shown below. Next, you must update the logic for the calculation of this statistic.

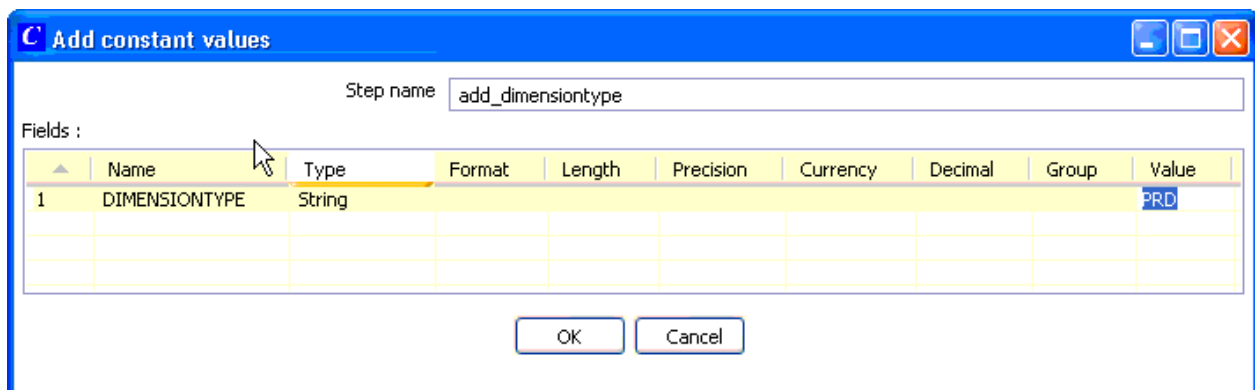


6. Replace the SQL statement with the following and click OK:

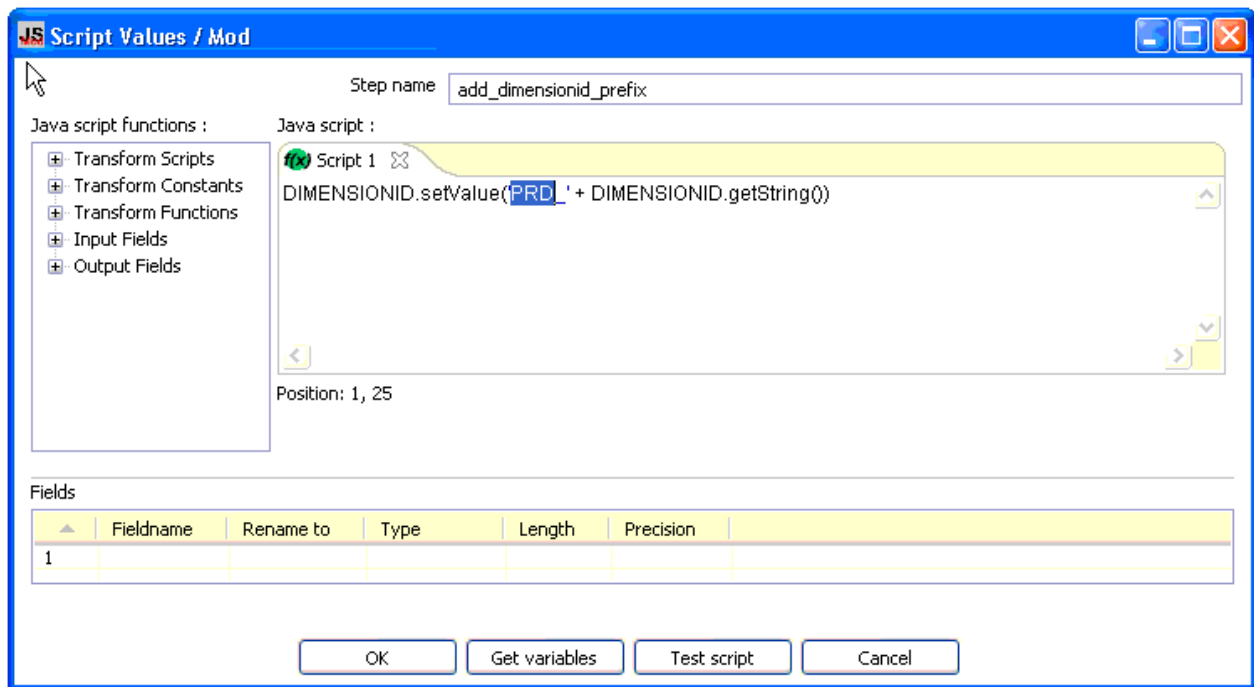
```
SELECT ? AS TENANTID ,
? AS SOLUTIONID ,
? AS STATSERVICEID ,
P.PRODUCT_TYPE AS DIMENSIONID ,
SUM(C.TOTAL_OVERDUE_TASK_COUNT) AS OVERDUE ,
SUM(C.TOTAL_PENDING_TASK_COUNT) AS PENDING
FROM PRODUCT P
LEFT JOIN I_TASK_CLASSIF_FACT_15MIN C
ON C.PRODUCT_KEY = P.PRODUCT_KEY
AND C.INTERVAL_KEY = ?
GROUP BY P.PRODUCT_TYPE
```

You use a left join on I_TASK_CLASSIF_FACT_15MIN, instead of an inner join because you want to retrieve data about all products, whether or not they have tasks associated with them.

7. Double-click the add_dimensiontype step to open the Add constant values dialog box.
8. Set the value of DIMENSIONTYPE to some string, and click OK. The figure below sets this string to PRD.



9. Double-click the add_dimensionid_prefix step to open the Script Values dialog box.
10. Change the script to use the dimension-type string that was assigned in Step 8, as shown in the figure below, and click OK.



11. Close the Designer, saving all work.
12. Stop iWD Data Mart runtime node.
13. In the `aggregate_stats\stats` subdirectory, using an ASCII editor, edit the `stats.properties` file to enable the statistic. Add the last line shown in the example below, and then save and close the file:

```

${KETTLE_REPOS_DIR}\aggregate_stats\stats\department_activeheld.ktr<br/>
${KETTLE_REPOS_DIR}\aggregate_stats\stats\department_newcompleted.ktr<br/>
${KETTLE_REPOS_DIR}\aggregate_stats\stats\department_pendingoverdue.ktr<br/>
${KETTLE_REPOS_DIR}\aggregate_stats\stats\process_activeheld.ktr<br/>
${KETTLE_REPOS_DIR}\aggregate_stats\stats\process_pendingoverdue.ktr<br/>
${KETTLE_REPOS_DIR}\aggregate_stats\stats\solution_newcompleted.ktr<br/>
${KETTLE_REPOS_DIR}\aggregate_stats\stats\product_pendingoverdue.ktr
    
```

This new `product_pendingoverdue` script is now ready for ETL to calculate overdue and pending tasks on its next run.