



This PDF is generated from authoritative online content, and is provided for convenience only. This PDF cannot be used for legal purposes. For authoritative understanding of what is and is not supported, always use the online content. To copy code samples, always use the online content.

Workspace Desktop Edition Developer's Guide

Toolbar Window

Contents

- [1 Toolbar Window](#)
 - [1.1 Window: ToolbarWindow](#)
 - [1.2 References](#)

Toolbar Window

Tip

If you want to highlight the functional areas in the Workspace UI with the red boxes and descriptions shown in the screen shots in this topic, on a *non-production* developer workstation, configure the value of the `keyboard.shortcut.action.test.hidden` developer option to a keyboard short cut, such as: `Ctrl+P`. When you press the keyboard shortcut, the functional areas are highlighted.

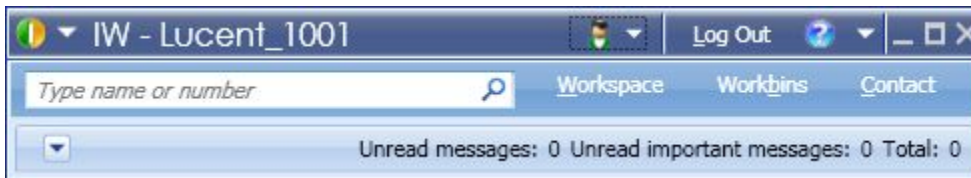


Purpose: To present for each window, the list of default views and regions that your application can customize.

Window: ToolbarWindow

Available since: 8.0.1; **updated in:** 8.1.0, 8.1.1, 8.1.2, 8.1.3, 8.1.4

The ToolbarWindow (IToolbarWindow) <ref name="Windows" >Module: Genesyslab.Desktop.Modules.Windows</ref> is the top-level window which contains predefined buttons in theToolbarWorksheetButtonRegion associated with specific working views.



The ToolbarWindow; no working view is deployed.

This toolbar contains views and regions which are activated depending on the user's input by clicking expandable button for instance. The components available in this toolbar are the following views and regions:

- **Window:** ToolbarWindow (IToolbarWindow) <ref name="Windows" />
 - **Region:** MainSplitButtonRegion (Multi-view)
 - **View:** MainButtonView (IMainButtonView) <ref name="Windows" >Module: Genesyslab.Desktop.Modules.Windows</ref>
 - **View:** MainToolbarMonitorView (IMainToolbarMonitorView) <ref name="ActiveRecording" >Module: Genesyslab.Desktop.Modules.ActiveRecording</ref>
 - **Region:** HelpSplitButtonRegion
 - **View:** ButtonHelpView (IButtonHelpView) <ref name="Windows" >Module:

Genesyslab.Desktop.Modules.Windows</ref>

- **Region:** ToolbarDialerRegion
 - **View:** ToolbarDialerView (ITeamCommunicatorView) <ref name="TeamCommunicator" >Module: Genesyslab.Desktop.Modules.TeamCommunicator</ref>
- **Region:** ToolbarWorksheetButtonRegion (Multi-view)
 - **View:** MyWorkplaceButtonView (IMyWorkplaceButtonView) <ref name="Windows" />
 - **Region:** ~~WorkspaceMenuRegion~~ **Deprecated.**
 - **View:** PlaceStatusMenu (IPlaceStatusMenuView)
 - **View:** MyCampaignsMenu (IMyCampaignsMenuView) <ref name="Outbound" >Module: Genesyslab.Desktop.Modules.Outbound</ref>
 - **View:** MyHistoryMenu (IHistoryMenuView) <ref name="Contacts" />
 - **View:** MyStatisticsMenu (IMyStatisticsMenuView) <ref name="Statistics" />
 - **View:** CallCenterStatisticsMenu (ICallCenterStatisticsMenuView) <ref name="Statistics" >Module: Genesyslab.Desktop.Modules.Statistics</ref>
 - **View:** MainToolbarWorkbinsContainerButtonView (IMainToolbarWorkbinsContainerButtonView) <ref name="OpenMedia" >Module: Genesyslab.Desktop.Modules.OpenMedia</ref>
 - **View:** MainToolbarContainerButtonView (IMainToolbarContainerButtonView) <ref name="Contacts" >Module: Genesyslab.Desktop.Modules.Contacts</ref>
 - **View:** MainToolbarContainerAlertMessageButtonView (IAlertMessageButtonView) <ref name="Windows" />
 - **Region:** ToolbarInteractionBarRegion
 - **View:** InteractionMainToolbarContainerView (IInteractionMainToolbarContainerView) <ref name="Interactionbar" >Module: Genesyslab.Desktop.Modules.InteractionBar</ref>
 - **Region:** InteractionMainToolbarContainerRegion
 - **View:** InteractionBar (IInteractionBarView) <ref name="Interactionbar" >Module: Genesyslab.Desktop.Modules.InteractionBar</ref>
 - **Region:** **InteractionBarCasesRegion** (Multi-view)
 - **Region:** ToolbarStatusRegion
 - **View:** AlertMessageView (IAlertMessageView) <ref name="Windows" />
 - **Region:** MyMessageRegion
 - **View:** MyMessagesView (IMyBroadcastMessageView) <ref name="Windows" />
 - **Region:** ToolbarWorksheetRegion
 - **View:** **MyWorkplaceContainerView** (IMyWorkplaceContainerView) <ref name="Windows" />
 - **View:** **MainToolbarContainerView** (IMainToolbarContainerView) <ref name="Contacts" />
 - **View:** **MainToolbarWorkbinsContainerView** (IMainToolbarWorkbinsContainerView) <ref name="OpenMedia" />

The following subsections detail the multi-views which are part of the components listed above.

Multi-view InteractionBarCasesRegion

Available since: 8.1.1. **Updated in:** 8.1.2, 8.1.3, 8.1.4

The multi-view InteractionBarCasesRegion is part of the InteractionBar region and includes the following regions and views:

- **Region:** InteractionBarCasesRegion (Multi-view)
 - **View:** InteractionBarCase (IInteractionBarCaseView) <ref name="InteractionBar"/>
 - **Region:** InteractionBarMainBundleRegion
 - **View:** InteractionBarMainBundle (IInteractionBarMainBundleView) <ref name="InteractionBar">Module: Genesyslab.Desktop.Modules.InteractionBar</ref>
 - **Region:** InteractionBarInteractionsRegion (Multi-view)
 - **View:** InteractionBarInteraction (IInteractionBarInteractionView) <ref name="InteractionBar"/>
 - **Region:** BundleToolbarContainerRegion (Multi-view)
 - **View:** InteractionCallbackToolBarView (IInteractionCallbackToolBarView) <ref name="Callback">Module: Genesyslab.Desktop.Modules.Callback</ref>
 - **View:** TeamLeadToolBarView (ITeamLeadToolBarView) <ref name="TeamLead">Module: Genesyslab.Desktop.Modules.TeamLead</ref>
 - **View:** InteractionPreviewToolBarView (IInteractionPreviewToolBarView) <ref name="Outbound">Module: Genesyslab.Desktop.Modules.Outbound</ref>
 - **View:** InteractionSmsToolBarView (IInteractionSmsToolBarView) <ref name="OpenMedia">Module: Genesyslab.Desktop.Modules.OpenMedia</ref>
 - **View:** InteractionInboundEmailToolBarView (IInteractionInboundEmailToolBarView) <ref name="OpenMedia" />
 - **View:** InteractionOutboundEmailToolBarView (IInteractionOutboundEmailToolBarView) <ref name="OpenMedia" />
 - **View:** BundleToolBarView (IBundleToolBarView) (Module: Genesyslab.Desktop.Modules.Windows)
 - **Region:** BundleCustomButtonRegion (Multi-view)
 - **View:** DonePullPreviewToolBarView (IDonePullPreviewToolBarView) <ref name="Outbound">Module: Genesyslab.Desktop.Modules.Outbound</ref>
 - **View:** RescheduleToolBarView (IRescheduleToolBarView) <ref name="Outbound">Module: Genesyslab.Desktop.Modules.Outbound</ref>
 - **View:** IxnMonitor (IxnMonitor) <ref name="

"ActiveRecording">Module:
Genesyslab.Desktop.Modules.ActiveRecording</ref>
Deprecated in 8.1.4

- **View:** InteractionCallbackRescheduleToolBarView (InteractionCallbackRescheduleToolBarView) <ref name="Callback">Module: Genesyslab.Desktop.Modules.Callback</ref>
- **View:** InteractionChatToolBarView (InteractionChatToolBarView) <ref name="OpenMedia" />
- **View:** InteractionChatConsultToolBarView (InteractionChatConsultToolBarView) <ref name="OpenMedia">Module: Genesyslab.Desktop.Modules.OpenMedia</ref>
- **View:** InteractionIMToolBarView (InteractionIMToolBarView) <ref name="Voice">Module: Genesyslab.Desktop.Modules.Voice</ref>
- **View:** InteractionPreviewToolBarView (InteractionPreviewToolBarView) <ref name="Outbound">Module: Genesyslab.Desktop.Modules.Outbound</ref>
- **View:** InteractionVoiceToolBarView (InteractionVoiceToolBarView) <ref name="Voice" />
 - **Region:** InteractionVoiceCustomButtonRegion (Multi-view)
 - **View:** SIPMonitor (ISIPMonitor) <ref name="ActiveRecording">Module: Genesyslab.Desktop.Modules.ActiveRecording</ref>
 - **View:** SIPEndpointSoundView (ISIPEndpointSoundView) <ref name="SIPEndpointCommunication">Module: Genesyslab.Desktop.Modules.SIPEndpointCommunication</ref>
 - **View:** IxnMonitor (IxnMonitor) <ref name="Desk">Module: Genesyslab.Desk</ref>
Available since: 8.1.4
- **View:** InteractionWorkItemToolBarView (InteractionWorkItemToolBarView) <ref name="OpenMedia" />
 - **Region:** CustomWorkItemToolBarRegion (Multi-view)
- **Region:** InteractionBarBundleToolBarRegion (Multi-view)
 - **View:** TeamLeadToolBarView (ITeamLeadToolBarView) <ref name="TeamLead">Module: Genesyslab.Desktop.Modules.TeamLead</ref>
 - **View:** BundleToolBarView (IBundleToolBarView) <ref name="Windows" />
 - **Region:** BundleCustomButtonRegion (Multi-view)
 - **View:** DonePullPreviewToolBarView (IDonePullPreviewToolBarView) <ref name="Outbound" />
 - **View:** RescheduleToolBarView (IRescheduleToolBarView) <ref name="Outbound" />
 - **View:** IxnMonitor (IxnMonitor) <ref name="

"ActiveRecording">Module:
Genesyslab.Desktop.Modules.ActiveRecording</ref>
Deprecated in: 8.1.4.

- **View:** InteractionCallbackRescheduleToolBarView (IInteractionCallbackRescheduleToolBarView) <ref name="Callback">Module: Genesyslab.Desktop.Modules.Callback</ref>
- **Region:** InteractionBarConsultationBundlesRegion (Multi-view)
 - **View:** InteractionBarConsultationBundle (IInteractionBarConsultationBundleView) <ref name="Interactionbar" >Module: Genesyslab.Desktop.Modules.InteractionBar</ref>
 - **Region:** InteractionBarInteractionsRegion (Multi-view)
Updated in: 8.1.4.
 - **View:** InteractionBarInteraction (IInteractionBarInteractionView) <ref name="InteractionBar">Module: Genesyslab.Desktop.Modules.InteractionBar</ref>
 - **Region:** BundleToolBarContainerRegion (Multi-view)
 - **View:** InteractionCallbackToolBarView (IInteractionCallbackToolBarView) <ref name="Callback" />
 - **View:** TeamLeadToolBarView (ITeamLeadToolBarView) <ref name="TeamLead" />Module: Genesyslab.Desktop.Modules.TeamLead</ref>
 - **View:** InteractionPreviewToolBarView (IInteractionPreviewToolBarView) <ref name="Outbound" />
 - **View:** InteractionCallbackToolBarView (IInteractionCallbackToolBarView) <ref name="Callback" />
 - **View:** InteractionSmsToolBarView (IInteractionSmsToolBarView) <ref name="OpenMedia" />
 - **View:** InteractionWorkItemToolBarView (IInteractionWorkItemToolBarView) <ref name="OpenMedia" />
 - **Region:** CustomWorkItemToolBarRegion (Multi-view)
 - **View:** InteractionOutboundEmailToolBarView (IInteractionOutboundEmailToolBarView) <ref name="OpenMedia" />
 - **View:** InteractionInboundEmailToolBarView (IInteractionInboundEmailToolBarView) <ref name="OpenMedia" />
 - **View:** BundleToolBarView (IBundleToolBarView) <ref name="Windows" />
 - **Region:** BundleCustomButtonRegion (Multi-view)
 - **View:** InteractionCallbackRescheduleToolBarView (IInteractionCallbackRescheduleToolBarView) <ref name="Callback" />
 - **View:** DonePullPreviewToolBarView (IDonePullPreviewToolBarView) <ref name="Outbound" />
 - **View:** RescheduleToolBarView (IRescheduleToolBarView) <ref name="Outbound" />
 - **View:** IxnMonitor (IxnMonitor) <ref name="ActiveRecording" />

- **View:** InteractionCallbackRescheduleToolbarView (IInteractionCallbackRescheduleToolbarView) <ref name="Callback" />
- **View:** InteractionVoiceToolbarView (IInteractionVoiceToolbarView) <ref name="Voice" >Module: Genesyslab.Desktop.Modules.Voice</ref>
 - **Region:** InteractionVoiceCustomButtonRegion (Multi-view)
 - **View:** SIPEndpointSoundView (ISIPEndpointSoundView) <ref name="SIPEndpointCommunication" >Module: Genesyslab.Desktop.Modules.SIPEndpointCommunication</ref>
 - **View:** SIPMonitor (ISIPMonitor) <ref name="ActiveRecording" />
 - **View:** IlnMonitor(IlnMonitor) <ref name="ActiveRecording" />
- **View:** InteractionIMToolbarView (IInteractionIMToolbarView) <ref name="Voice" />
- **View:** InteractionChatToolbarView (IInteractionChatToolbarView) <ref name="OpenMedia" />
- **View:** InteractionChatConsultToolbarView (IInteractionChatConsultToolbarView) <ref name="OpenMedia" />
- **Region:** InteractionBarBundleToolbarRegion (Multi-view)
Updated in: 8.1.4.
 - **View:** TeamLeadToolbarView (ITeamLeadToolbarView) (Module: Genesyslab.Desktop.Modules.TeamLead)
 - **View:** BundleToolbarView (IBundleToolbarView) (Module: Genesyslab.Desktop.Modules.Windows)
 - **Region:** BundleCustomButtonRegion (Multi-view)
 - **View:** InteractionCallbackRescheduleToolbarView (IInteractionCallbackRescheduleToolbarView) (Module: Genesyslab.Desktop.Modules.Callback)
 - **View:** DonePullPreviewToolbarView (IDonePullPreviewToolbarView) <ref name="Outbound" />
 - **View:** RescheduleToolbarView (IRescheduleToolbarView) <ref name="Outbound" />

Multi-view MyWorkplaceContainerView

Available since: 8.0.1

Updated in: 8.1.0, 8.1.1, 8.1.2

The multi-view MyWorkPlace is part of the ToolbarWorksheetRegion region and includes the following regions and views:

- **View:** MyWorkplaceContainerView (IMyWorkplaceContainerView) <ref name="Windows" />

- **Region:** ToolbarWorkplaceRegion (Multi-view)
 - **View:** MyPlaceStatusView (IMyPlaceStatusView) <ref name="Windows" />
 - **View:** myCampaignsListView (IMyCampaignsView) <ref name="Outbound" >Module: Genesyslab.Desktop.Modules.Outbound</ref>
 - **Region:** CampaignsErrorRegion
 - **View:** campaignsErrorView (ILastAlertErrorView) <ref name="Windows" />
 - **View:** MyContactHistory (IMyContactHistoryView) <ref name="Contacts" />
 - **Region:** ContactHistoryErrorRegion
 - **View:** ContactHistoryErrorView (ILastAlertErrorView) <ref name="Windows" />
 - **Region:** ContactTabBottomHistoryMultiRegion (Multi-view)
 - **View:** ContactDetailView (IContactDetailView) <ref name="Contacts" />
 - **Region:** ContactDetailRegion
 - **View:** OpenMediaContactDetailContentView (IOpenMediaContactDetailContentView) <ref name="Contacts">Module: Genesyslab.Desktop.Modules.Contacts</ref>
 - **Region:** ControllistAttachmentRegion
 - **View:** ControllistAttachmentView (IAttachmentView) <ref name="Windows" />
 - **View:** CallbackContactDetailContentView (ICallbackContactDetailContentView) <ref name="Callback" />
Added in: 8.1.4
 - **Region:** ContactDetailCallbackInformationRegion
 - **View:** ContactDetailCallbackInformationView (IGenericDataView) <ref name="Windows" />
 - **View:** FormerContactDetailContentView (IFormerContactDetailContentView) <ref name="Contacts">Module: Genesyslab.Desktop.Modules.Contacts</ref>
 - **Region:** ControllistAttachmentRegion
 - **View:** ControllistAttachmentView (IAttachmentView) <ref name="Windows" />
 - **View:** ContactHistoryNotepadView(INotepadView) <ref name="Windows" />
 - **View:** ContactHistoryCaseDataView (IStaticCaseDataView) <ref name="Windows" />
 - **Region:** StaticCaseDataRegion
 - **View:** StaticCaseDataView (IGenericDataView) <ref name="Windows" >Module: Genesyslab.Desktop.Modules.Windows</ref>
 - **Region:** StaticDispositionCodeRegion
 - **View:** StaticDispositionCodeView (IGenericDataView) <ref name="Windows" >Module: Genesyslab.Desktop.Modules.Windows</ref>

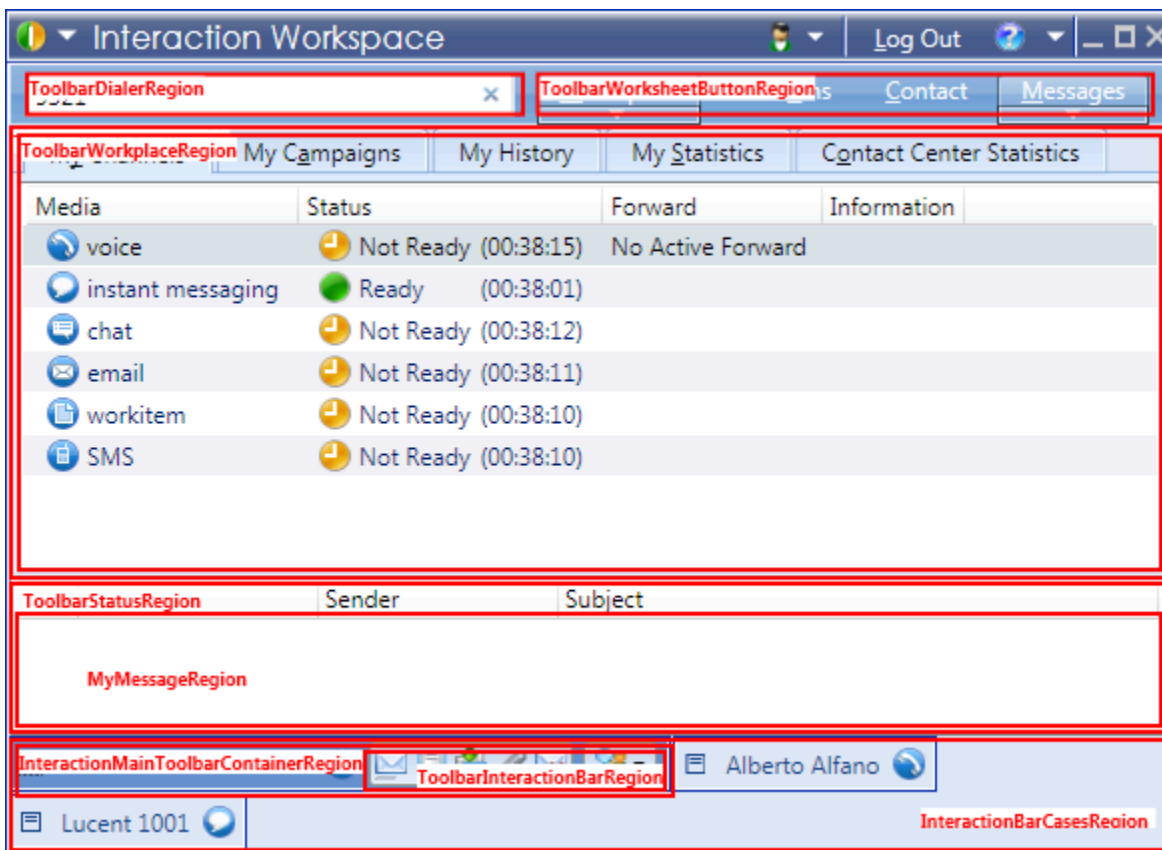
- **View:** MyStatisticsView (IMyStatisticsView) <ref name="Statistics" />
- **View:** MyCallCenterStatisticsView (IMyCallCenterStatisticsView) <ref name="Statistics" />

See the [Gadget Windows](#) for screenshots of [MyStatisticsView](#) and [MyCallCenterStatisticsView](#).

Example MyPlaceStatusView

In the following example, you can observe the views and regions which are visible when:

1. The Place Status Menu is selected in the ToolbarWorksheetButtonRegion.
2. The *MyChannel* tab is selected and makes visible the MyPlaceStatusView.



The selection of 'MyChannels' displays the 'PlaceStatus' View (8.1.1).

The views and regions which are visible in this screenshot are the following:

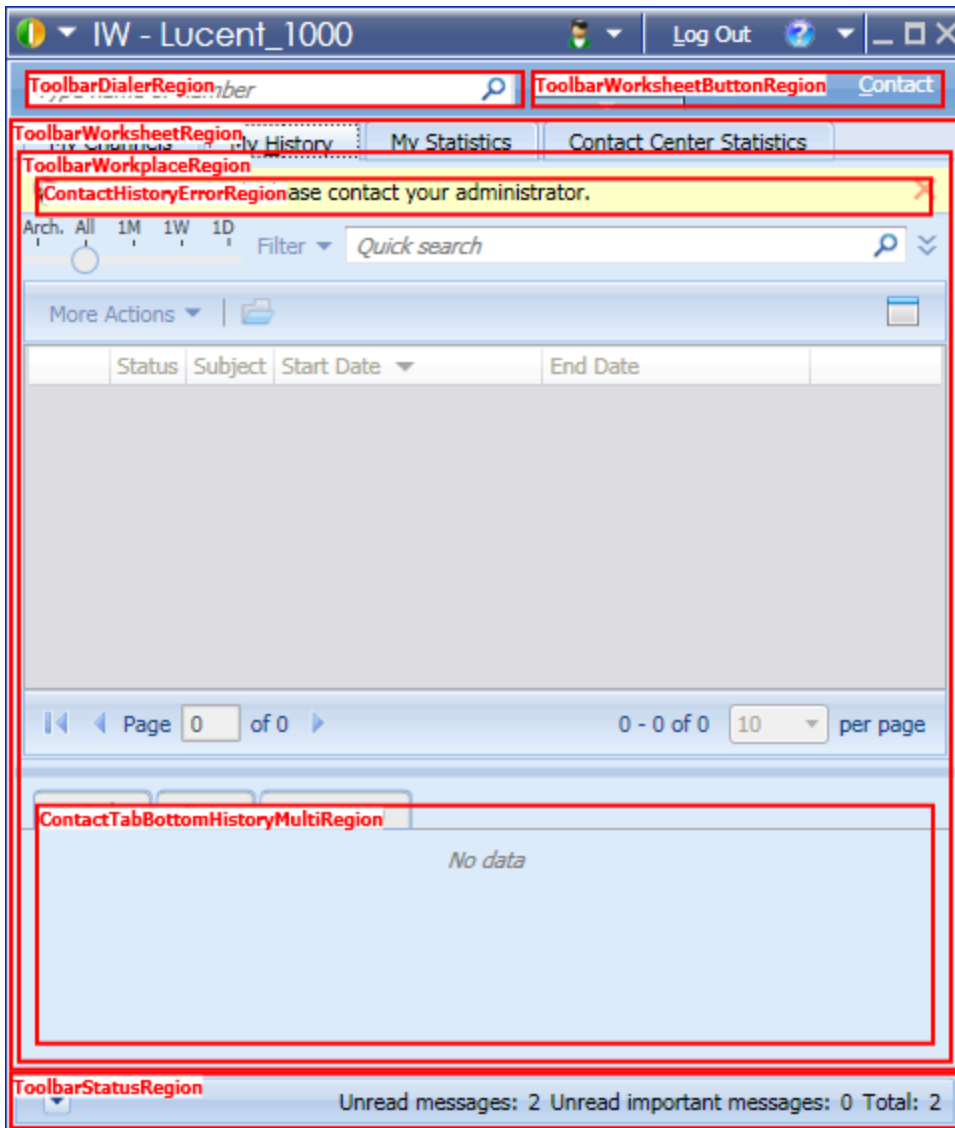
- **Window:** ToolbarWindow (IToolbarWindow) <ref name="Windows" />
 - **Region:** MainSplitButtonRegion (Multi-view)
 - **View:** MainButtonView (IMainButtonView) <ref name="Windows" >Module: Genesyslab.Desktop.Modules.Windows</ref>
 - **Region:** HelpSplitButtonRegion

- **View:** ButtonHelpView (IButtonHelpView) <ref name="Windows" >Module: Genesyslab.Desktop.Modules.Windows</ref>
- **Region:** ToolbarDialerRegion
 - **View:** ToolbarDialerView (ITeamCommunicatorView) <ref name="TeamCommunicator" />
- **Region:** ToolbarWorksheetButtonRegion (Multi-view)
 - **View:** MyWorkplaceButtonView (IMyWorkplaceButtonView) <ref name="Windows" />
 - **Region:** WorkspaceMenuRegion
 - **View:** PlaceStatusMenu (IPlaceStatusMenuView)
- **Region:** ToolbarStatusRegion
 - **View:** AlertMessageView (IAlertMessageView) <ref name="Windows" />
 - **Region:** MyMessageRegion
 - **View:** MyMessagesView (IMyBroadcastMessageView) <ref name="Windows" />
- **Region:** ToolbarWorksheetRegion
 - **View:** MyWorkplaceContainerView (IMyWorkplaceContainerView) <ref name="Windows" />
 - **Region:** ToolbarWorkplaceRegion (Multi-view)
 - **View: MyPlaceStatusView** (IMyPlaceStatusView) <ref name="Windows" />
- **Region:** ToolbarInteractionBarRegion
 - **View:** InteractionMainToolbarContainerView (IInteractionMainToolbarContainerView) <ref name="Interactionbar" >Module: Genesyslab.Desktop.Modules.InteractionBar</ref>
 - **Region:** InteractionMainToolbarContainerRegion
 - **View:** InteractionBar (IInteractionBarView) <ref name="Interactionbar" >Module: Genesyslab.Desktop.Modules.InteractionBar</ref>
 - **Region:** InteractionBarCasesRegion (Multi-view)

Example MyContactHistory

In the following example, you can observe the views and regions which are visible when:

1. The Place Status Menu is selected in the ToolbarWorksheetButtonRegion.
2. The *MyHistory* tab is selected and makes visible the MyContactHistory.



MyContactHistory in IMyWorkplaceView

The views and regions which are visible in this screenshot are the following:

- **Window:** ToolbarWindow (IToolbarWindow) <ref name="Windows" />
 - **Region:** MainSplitButtonRegion (Multi-view)
 - **View:** MainButtonView (IMainButtonView) <ref name="Windows" >Module: Genesyslab.Desktop.Modules.Windows</ref>
 - **Region:** HelpSplitButtonRegion
 - **View:** ButtonHelpView (IButtonHelpView) <ref name="Windows" >Module: Genesyslab.Desktop.Modules.Windows</ref>
- **Region:** ToolbarDialerRegion

- **View:** ToolbarDialerView (ITeamCommunicatorView) <ref name="TeamCommunicator" />
- **Region:** ToolbarWorksheetButtonRegion (Multi-view)
 - **View:** MyWorkplaceButtonView (IMyWorkplaceButtonView) <ref name="Windows" />
 - **Region:** WorkspaceMenuRegion
 - **View:** MyHistoryMenu (IHistoryMenuView)
- **Region:** ToolbarStatusRegion
- **Region:** ToolbarWorksheetRegion
 - **View:** MyWorkplaceContainerView (IMyWorkplaceContainerView) <ref name="Windows" />
 - **Region:** ToolbarWorkplaceRegion (Multi-view)
 - **View:** MyContactHistory (IMyContactHistoryView) <ref name="Contacts" />
 - **Region:** ContactHistoryErrorRegion
 - **View:** ContactHistoryErrorView (ILastAlertErrorView) <ref name="Windows" />
 - **Region:** ContactTabBottomHistoryMultiRegion (Multi-view)
 - **View:** ContactDetailView (IContactDetailView) <ref name="Contacts" />
 - **Region:** ContactDetailRegion
 - **View:** OpenMediaContactDetailContentView (IOpenMediaContactDetailContentView) <ref name="Contacts">Module: Genesyslab.Desktop.Modules.Contacts</ref>
 - **Region:** ControlListAttachmentRegion
 - **View:** ControlListAttachmentView (IAttachmentView) <ref name="Windows" />
 - **View:** CallbackContactDetailContentView (ICallbackContactDetailContentView) <ref name="Callback" />
 - **Region:** ContactDetailCallbackInformationRegion
 - **View:** ContactDetailCallbackInformationView (IGenericDataView) <ref name="Windows" />
 - **View:** FormerContactDetailContentView (IFormerContactDetailContentView) <ref name="Contacts">Module: Genesyslab.Desktop.Modules.Contacts</ref>
 - **Region:** ControlListAttachmentRegion
 - **View:** ControlListAttachmentView (IAttachmentView) <ref name="Windows" />

Multi-view MainToolbarContainerView

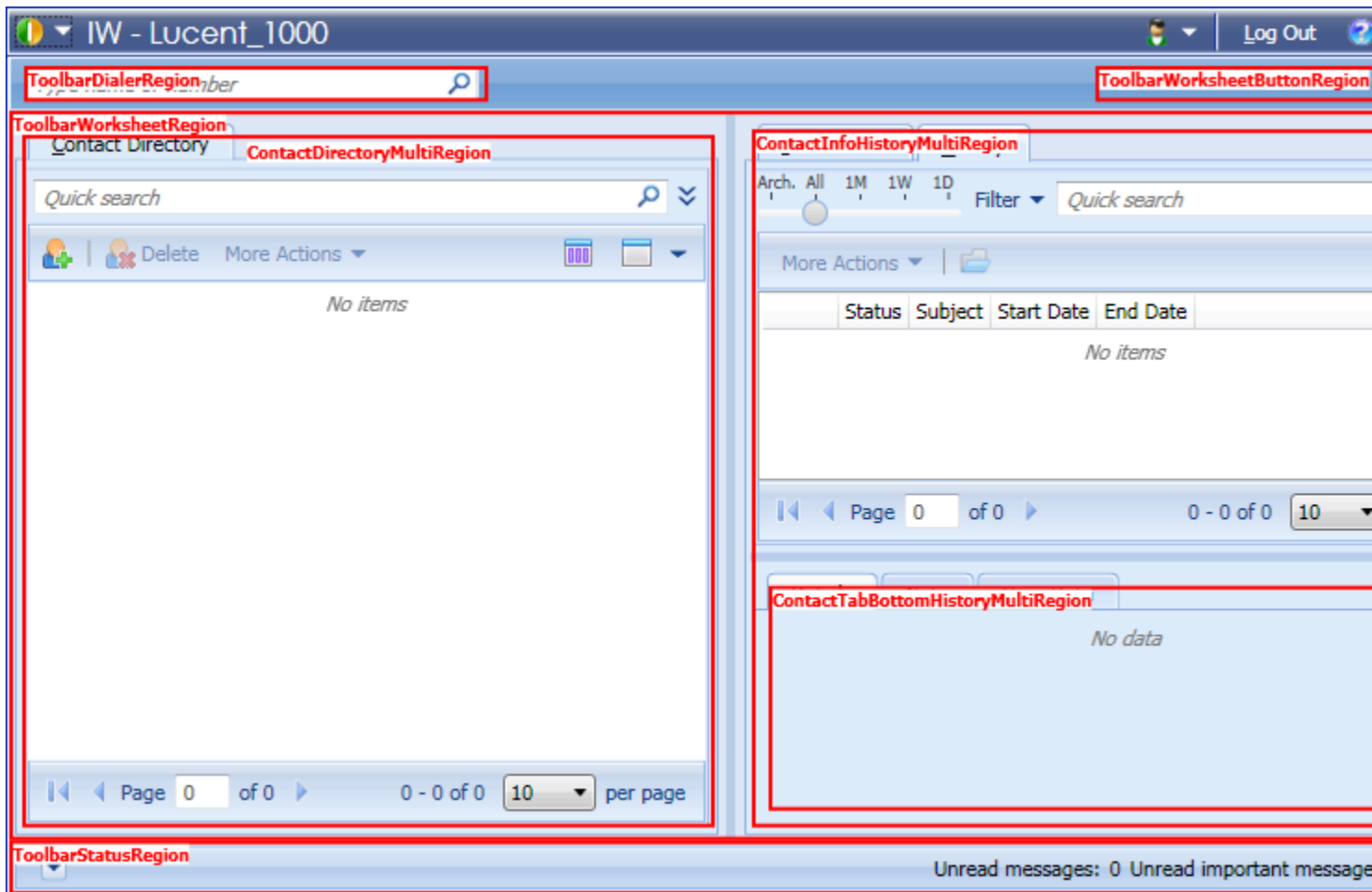
The multi-view MainToolbarWorkbinsContainerView is part of the ToolbarWorksheetRegion region,

which includes the following regions and views:

- **View:** MainToolbarContainerView (IMainToolbarContainerView) <ref name="Contacts" />
 - **Region:** ContactDirectoryMultiRegion (Multi-view)
 - **View:** ContactDirectoryView (IContactDirectoryView) <ref name="Contacts" />
 - **Region:** ContactDirectoryErrorRegion
 - **View:** ContactDirectoryErrorView (ILastAlertErrorView) <ref name="Windows" />
 - **Region:** ContactInfoHistoryMultiRegion (Multi-view)
 - **View:** ContactInformationView (IContactInformationView) <ref name="Contacts" />
 - **Region:** ContactInformationErrorRegion
 - **View:** ContactInformationErrorView (ILastAlertErrorView) <ref name="Windows" />
 - **View:** ContactHistoryView (IMyContactHistoryView) <ref name="Contacts" />
 - **Region:** ContactHistoryErrorRegion
 - **View:** ContactHistoryErrorView (ILastAlertErrorView) <ref name="Windows" />
 - **Region:** ContactTabBottomHistoryMultiRegion (Multi-view)
 - **View:** ContactDetailView (IContactDetailView) <ref name="Contacts" />
 - **Region:** ContactDetailRegion
 - **View:** FormerContactDetailContentView FormerContactDetailContentView (IFormerContactDetailContentView) <ref name="Contacts">Module: Genesyslab.Desktop.Modules.Contacts</ref>
 - **Region:** ControlListAttachmentRegion
 - **View:** ControlListAttachmentView (IAttachmentView) <ref name="Windows" />
 - **View:** CallbackContactDetailContentView (ICallbackContactDetailContentView) <ref name="Callback" />
 - **Region:** ContactDetailCallbackInformationRegion
 - **View:** ContactDetailCallbackInformationView (IGenericDataView) <ref name="Windows" />
 - **View:** OpenMediaContactDetailContentView (IOpenMediaContactDetailContentView) <ref name="OpenMedia">Module: Genesyslab.Desktop.Modules.OpenMedia</ref>
 - **Region:** ControlListAttachmentRegion
 - **View:** AttachmentView ControlListAttachmentView (IAttachmentView) <ref name="Windows" />
 - **View:** ContactHistoryNotepadView(INotepadView) <ref name="Windows" />
 - **View:** ContactHistoryCaseDataView (IStaticCaseDataView) <ref name="Windows" />
 - **Region:** StaticCaseDataRegion

- **View:** StaticCaseDataView (IGenericDataView) <ref name="Windows">Module: Genesyslab.Desktop.Modules.Windows</ref>
- **Region:** StaticDispositionCodeRegion
 - **View:** StaticDispositionCodeView (IGenericDataView) <ref name="Windows">Module: Genesyslab.Desktop.Modules.Windows</ref>

The following screenshot shows this component and its nested views and regions (but not all of them):



The Contact Button is selected in the ToolbarWorkSheetButtonRegion.

Multi-view MainToolbarWorkbinsContainerView

Modified in 8.1.4

The multi-view MainToolbarWorkbinsContainerView is part of the ToolbarWorksheetRegion region, which includes the following regions and views:

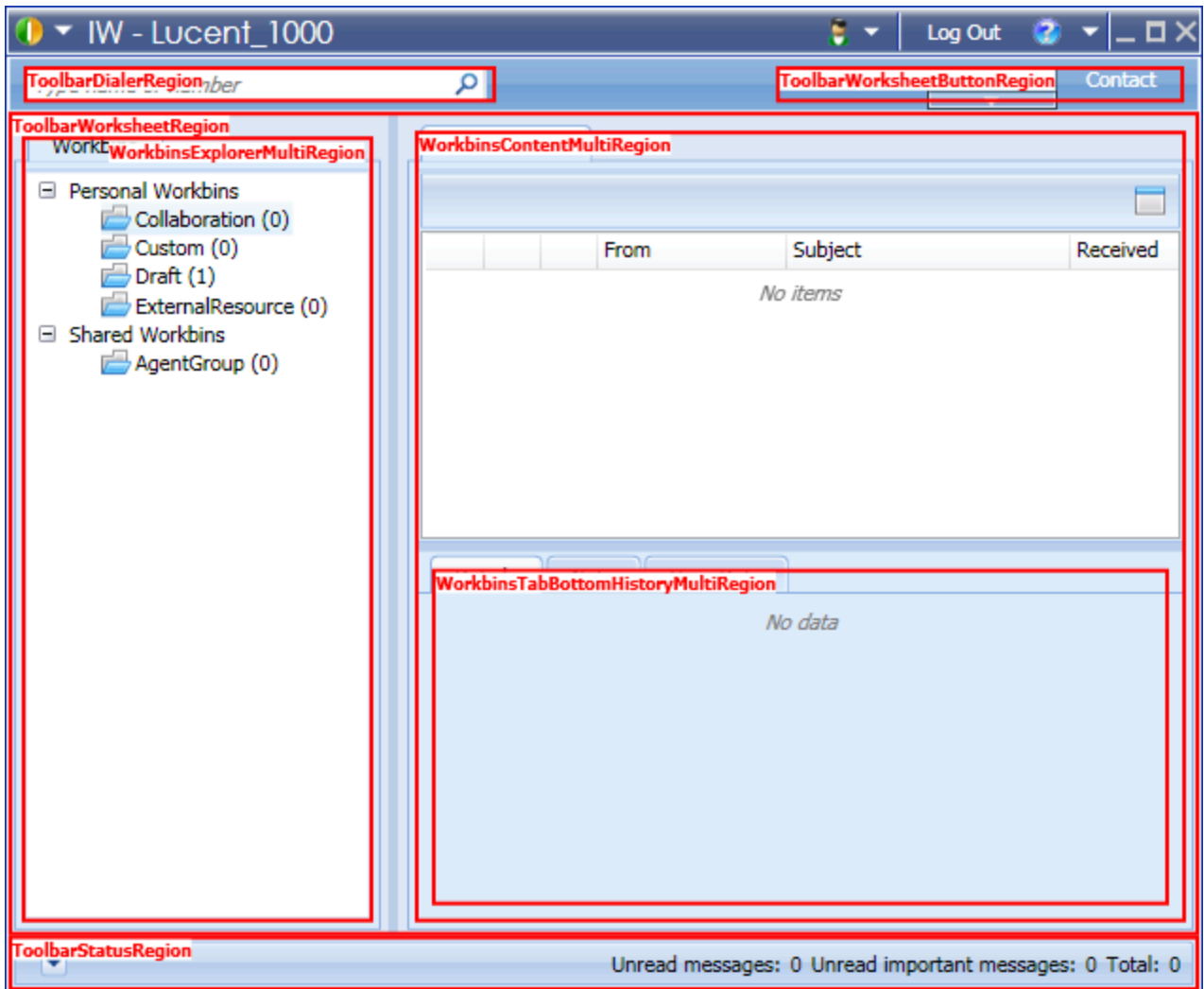
- **View:** MainToolbarWorkbinsContainerView (IMainToolbarWorkbinsContainerView) <ref name="OpenMedia" />

- **Region:** WorkbinsExplorerMultiRegion (Multi-view)
 - **View:** WorkbinsExplorerViewMyWorkbinsExplorerView (IWorkbinsExplorerView) <ref name="OpenMedia" />
Modified in 8.1.4
 - **Region:** WorkbinsExplorerViewErrorRegion
 - **View:** WorkbinsExplorerViewErrorView (ILastAlertErrorView) <ref name="Windows" />
- **View:** MyTeamWorkbinsExplorerView (ITeamLeadWorkbinsExplorerView) <ref name="OpenMedia" />
Added in 8.1.4
 - **Region:** MyTeamWorkbinsExplorerViewErrorRegion
 - **View:** MyTeamWorkbinsExplorerViewErrorView (ILastAlertErrorView) <ref name="Windows" />
- **View:** MyInteractionFiltersExplorerView (IInteractionFiltersExplorerView) <ref name="OpenMedia" />
Added in 8.1.4
- **Region:** WorkbinsContentMultiRegion (Multi-view)
 - **View:** WorkbinsView (IWorkbinsView) <ref name="OpenMedia" />
 - **Region:** WorkbinsViewErrorRegion
 - **View:** WorkbinsViewErrorView (ILastAlertErrorView) <ref name="Windows" />
 - **Region:** WorkbinsTabBottomHistoryMultiRegion (Multi-view)
 - **View:** ContactDetailView (IContactDetailView) <ref name="Contacts" />
 - **Region:** ContactDetailRegion
 - **View:** CallbackContactDetailContentView (ICallbackContactDetailContentView) <ref name="Callback" />
Added in: 8.1.4
 - **Region:** ContactDetailCallbackInformationRegion
 - **View:** ContactDetailCallbackInformationView (IGenericDataView) <ref name="Windows" />
 - **View:** FormerContactDetailContentView (IOpenMediaContactDetailContentView) <ref name="Contacts">Module: Genesyslab.Desktop.Modules.Contacts</ref>
 - **Region:** ControlListAttachmentRegion
 - **View:** ControlListAttachmentView (IAttachmentView) <ref name="Windows" />
 - **View:** OpenMediaContactDetailContentView (IContactDetailContentView) <ref name="OpenMedia">Module: Genesyslab.Desktop.Modules.OpenMedia</ref>
 - **Region:** ControlListAttachmentRegion
 - **View:** ControlListAttachmentView (IAttachmentView) <ref name="


```
"Windows" />
```

- ContactHistoryNotepadView <ref name="Windows" /> (INotepadView)
- **View:** ContactHistoryCaseDataView (IStaticCaseDataView) <ref name="Windows" />
 - **Region:** StaticCaseDataRegion
 - **View:** StaticCaseDataView (IGenericDataView) <ref name="Windows" >Module: Genesyslab.Desktop.Modules.Windows</ref>
 - **Region:** StaticDispositionCodeRegion
 - **View:** StaticDispositionCodeView (IGenericDataView) <ref name="Windows" >Module: Genesyslab.Desktop.Modules.Windows</ref>

The following screenshot shows this component and its nested views and regions (but not all of them):



Workbins components.

References

<references />