



This PDF is generated from authoritative online content, and is provided for convenience only. This PDF cannot be used for legal purposes. For authoritative understanding of what is and is not supported, always use the online content. To copy code samples, always use the online content.

Gplus Adapter User Guide

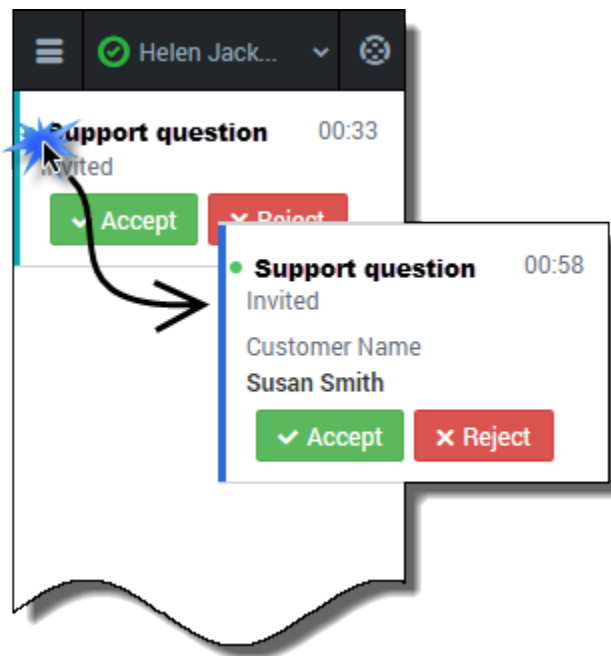
Chatting with a customer

Chatting with a customer

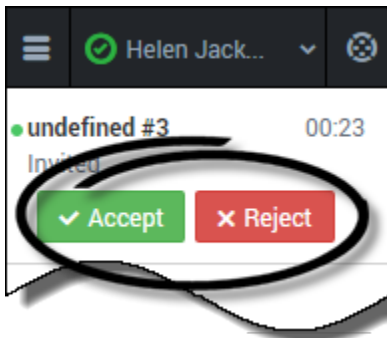
When you open your chat channel, the main chat view is displayed. Initially, there are no chat invitations displayed. When a new chat interaction arrives, it is displayed in your list. A green symbol is displayed beside each unanswered chat invitation. The symbol goes away after you accept the chat and the status changes to show that your chat is in progress. This view is useful for when you are **managing multiple chats**.

You can click any white space on the invitation to view more details about the chat before you accept or reject it.

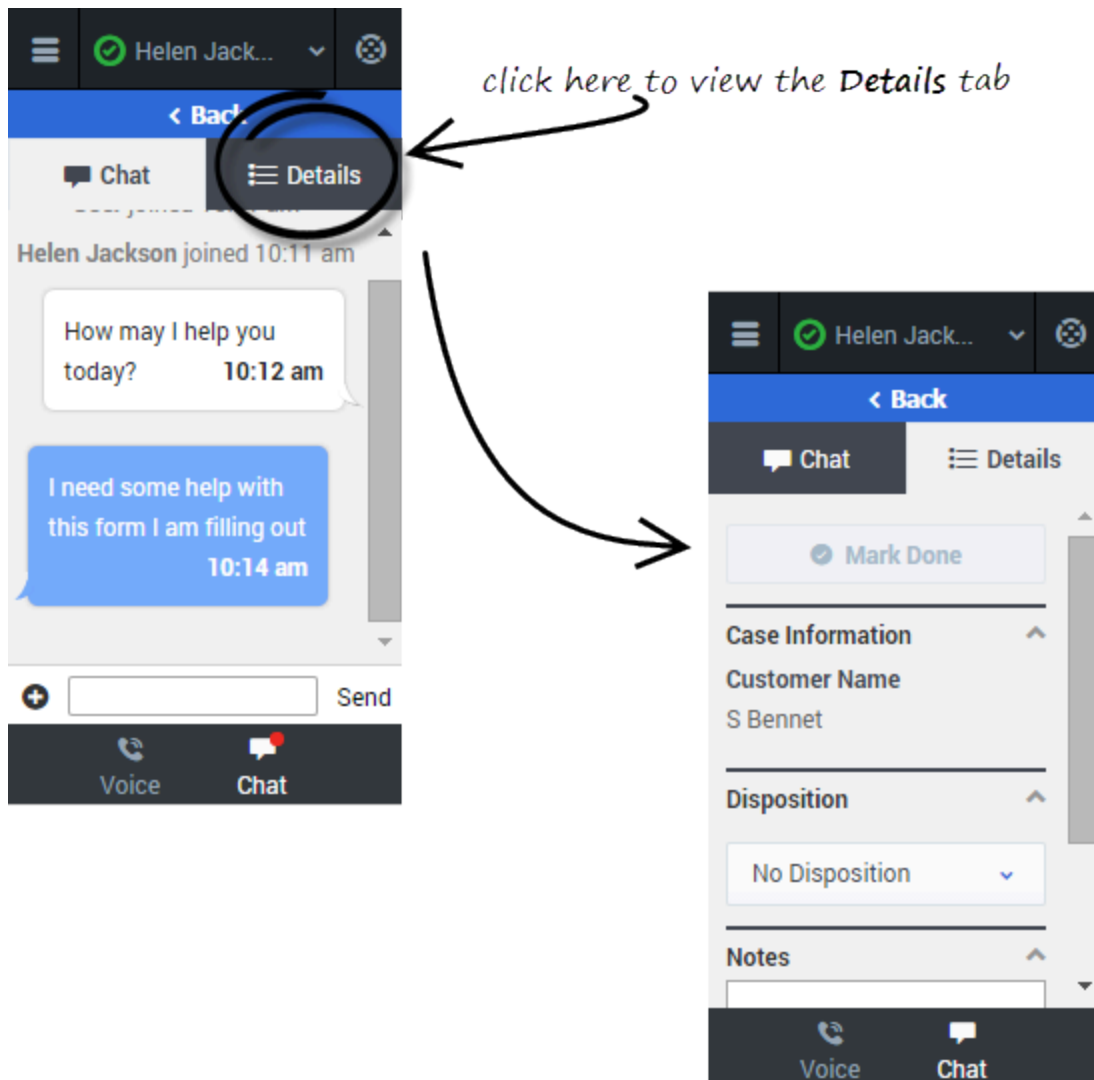
click here to expand the section to see more details



You can choose to **Accept** or **Reject** the chat invitation.



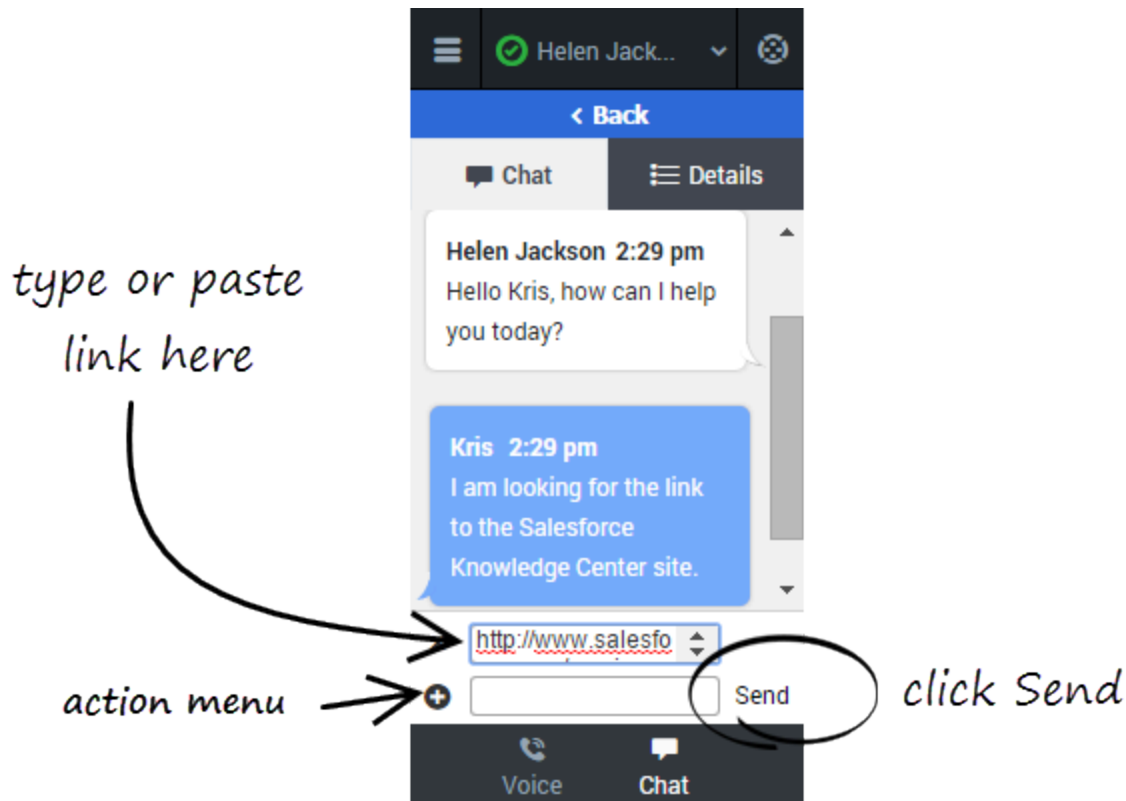
How to conduct a chat




When you accept a chat invitation, the Details view for the chat is opened, you can click the Chat view to chat with your customer. This is where you actively chat with your customer. Chatting is very simple. You just read the messages, and respond by typing text in the text field and then clicking **Send**. You can also click the **Details** tab to view call details.

To conduct a chat, click **Accept** when a new chat invitation arrives. If required, click the **Details** tab to view the call details. Conduct your chat conversation with your customer. When the conversation is complete, click the **+** symbol at the bottom of the Adapter, and then select **Leave Chat**. On the **Detail** tab, enter your notes, select a disposition, and click **Mark Done**.

How to send a link



While chatting with a customer, you might want to send a link to a website. For example, you can send a link to an application form for a client card or a knowledge center on your support site.

To send a link, click **Send Link**  in the Actions menu. Copy and paste (or type) the Universal Resource Locator (URL) in the URL field above the entry field that pops up. You can also type a message to accompany the link in the text entry field. Then you click **Send**. The Adapter validates the URL and sends the link to your client.

After you send a URL to a customer, the link stays active in the transcript so that the customer can access the link after the call is complete.

Warning

If your browser is refreshed or closed while you are in the middle of a chat session, the chat session will resume after you log back into the Adapter. However, if you are typing a message at the time the browser closes or refreshes, your message will be lost. When you close your browser window, you are automatically logged out the Adapter. All interactions are terminated and do not resume when you log back in again; therefore, ensure that your interactions are complete before logging out and closing your browser window.

Important

If you reject the chat, the chat invitation is no longer displayed on the list and the customer is routed to another agent.

Troubleshooting tip

- If the customer leaves the chat before you accept the invitation, a message is displayed in the chat transcript. This message lets you know that the chat is now offline. The only action that you can perform in an offline chat is mark the chat as done.