



This PDF is generated from authoritative online content, and is provided for convenience only. This PDF cannot be used for legal purposes. For authoritative understanding of what is and is not supported, always use the online content. To copy code samples, always use the online content.

Quick Start Guide

Testing the Playground Application

12/14/2025

Testing the Playground Application

Contents

- 1 Testing the Playground Application
 - 1.1 Test Scenario Steps
 - 1.2 Test Scenario Preparation
 - 1.3 Other Test Scenarios

To give you a better idea of how to use the Playground application, let's walk through an example of building a "keyword search" scenario.

Test Scenario Steps

Here are the steps in our scenario:

1. An anonymous user visits the site.
2. The user enters a search term, "contract", in the search box.
3. The user browses the search results.
4. A chat invitation window appears.
5. The user accepts the invitation.
6. The user fills out the registration form and submits it.
7. The user chats with an agent.
8. The agent sees pages the user visited.
9. The agent sends the user a link to a page of interest.
10. The user exits the chat session.

Test Scenario Preparation

Here are the steps to complete before we can walk through our test scenario. Note that for steps 1 through 6, you do not need to take any action if you are using the Playground application, as these items are covered out of the box.

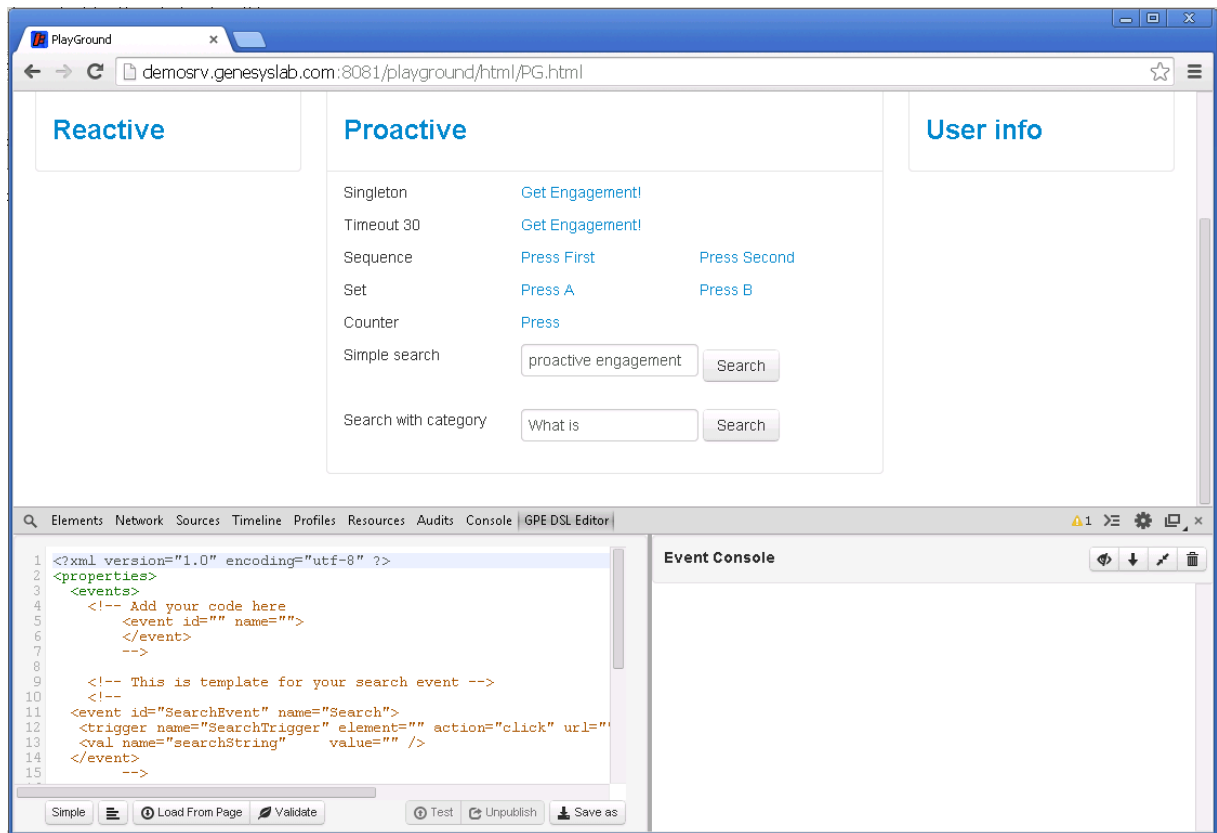
1. Customize the DSL file with the InTool application.

IMPORTANT: If your web browser blocks the installation of extensions, you can try the steps described in [InTools installation for Chrome \(Windows\)](#).

Complete the steps below to add the events to the DSL file for our test scenario.

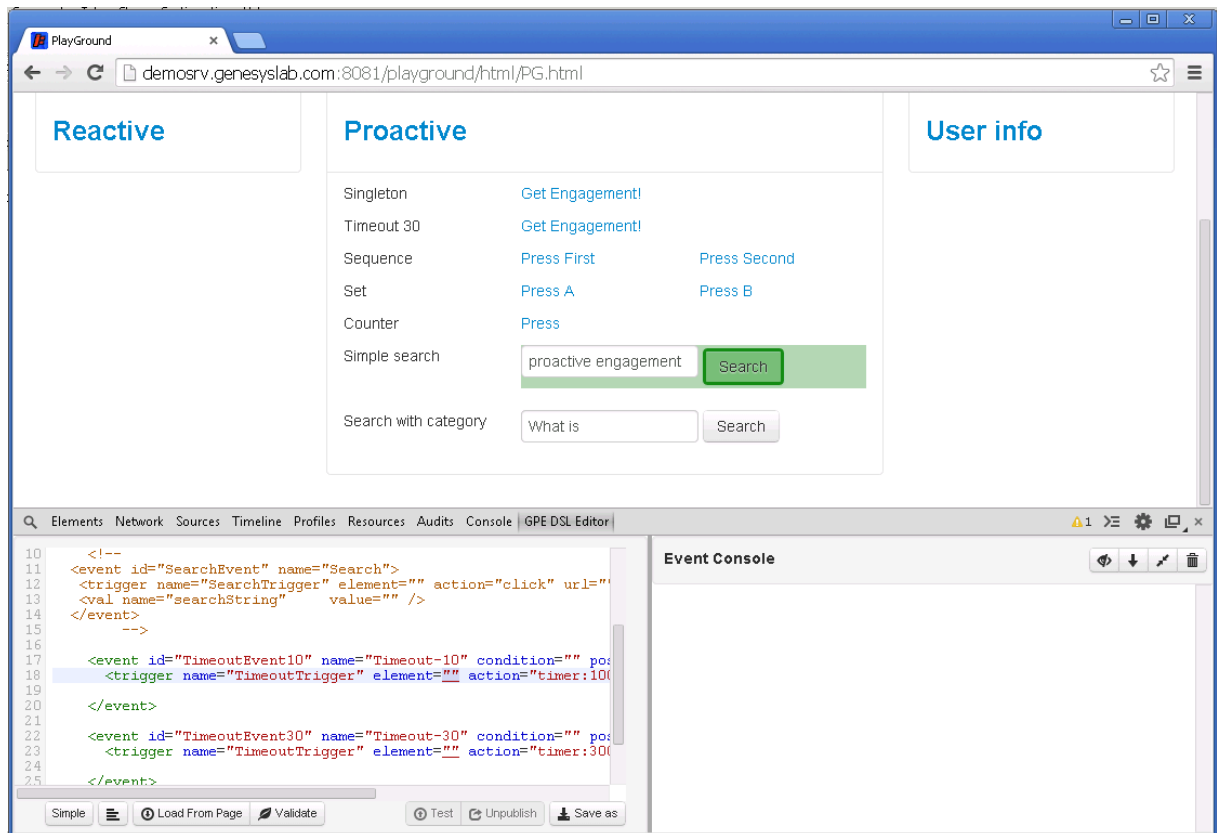
Start

1. Open the Playground application in InTools. You can launch InTools by navigating to **GWE_installation_directory\tools\intools**. Take the **intools.crx** file and drop it into the Extensions page of your Google Chrome or Chromium browser.
2. Press F12 to open the developer tools and select **GPE DSL Editor**.

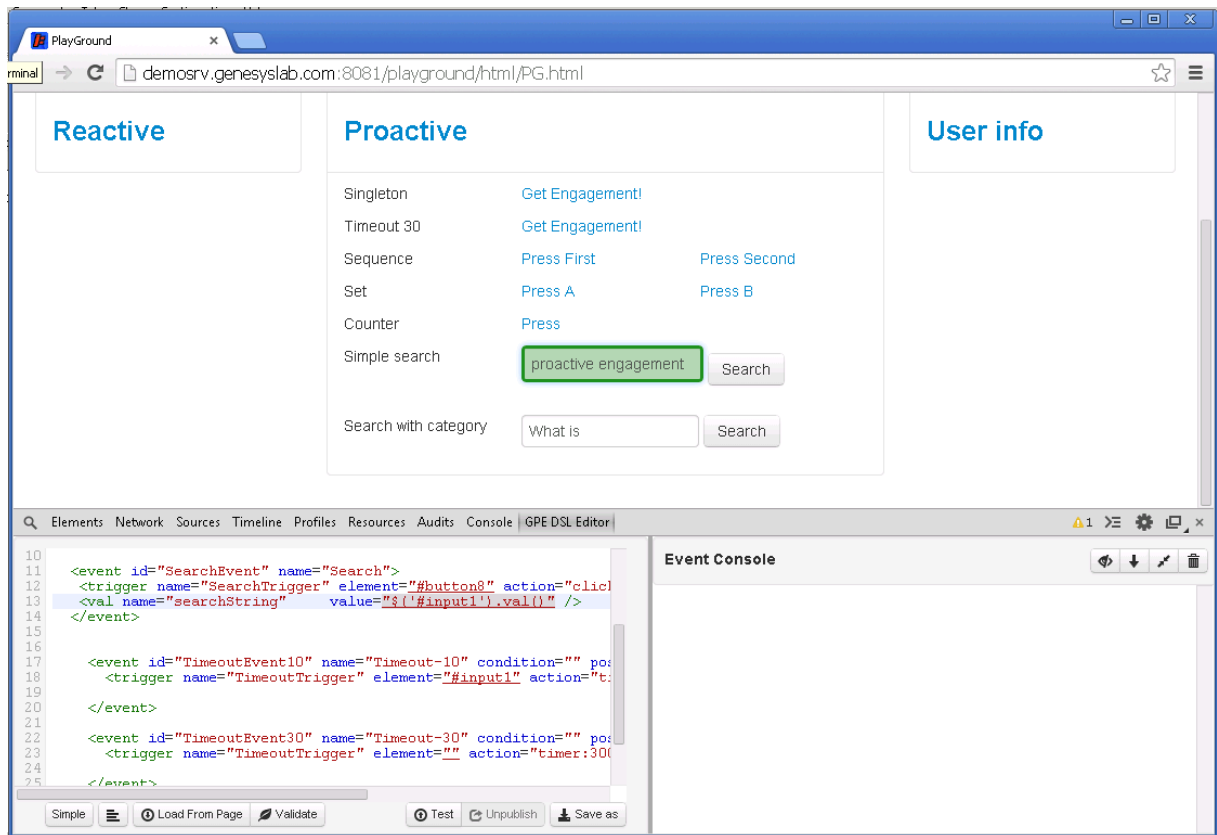


The left window shows the DSL for Playground application, while the right window shows the events on the page.

- Find the "TimeoutEvent10" **<event>** in the DSL and select the "element" attribute on its **<trigger>**. InTool goes into search mode.
- Select **Search**. The selector for **Search** replaces the "element" attribute value. We now have a trigger for the event in Step 5 of our test scenario: 10 seconds after loading the search results appears chat invitation window.



5. If you select a "value" attribute in the DSL, InTool goes into search mode. Now you can select an item on the page and the selector for that item will replace the "value" attribute in the DSL.



6. Click **Test** to confirm your event works.

End

2. Create categories using the GWE Management interface.

In the steps below we create a category that matches the "contract" search term, Step 2 in our Test Scenario.

Start

1. Open a browser and go to `http(s)://<GWE Load Balancer host>:<GWE Load Balancer port>/server`
2. On the **Categories** page, click **New Category**.
3. Enter the following information:
 - **Category Name** — Playground-SearchWithCategory
 - **Category Description** — Keywords for search
 - Enable "Reveal category in Agent Portal" to make the category available for agents.
 - Click **Save**. The new category is added to the list of categories.
4. Select the **Playground-SearchWithCategory** category.
5. In the **Matching Tags** section, click +.
6. Enter the following information:
 - **Name** — PlayGround-SearchWithCategory

- **Type** — Plain Text
- **Expression** — contact
- **Language** — Select a language from the list.
- Click **Save**. The tag is added to the Category Matching Tags section.

7. In the Language section, click +.

8. Enter the following information:

- **Name** — PlayGround-SearchWithCategory
- **Language** — Select a language from the list.
- Click **Save**. The language is added to the Language section.

End

3. Configure Genesys Rules System

Complete the following procedures Genesys Rules System to work with Web Engagement.

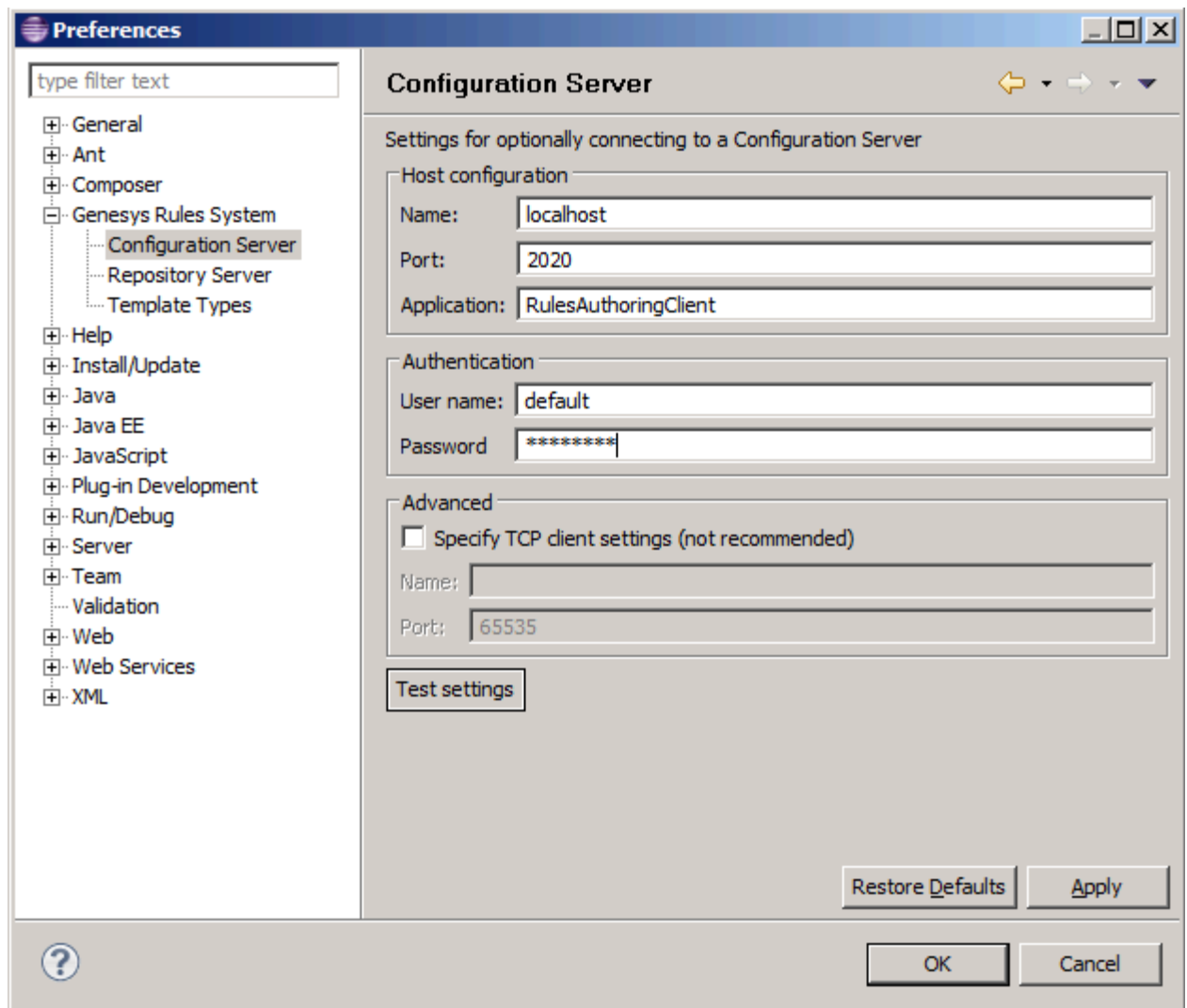
Configuring Genesys Rules Development Tool

Prerequisites

- Your environment includes Genesys Rules Development Tool (GRDT), deployed as a Composer plug-in. See [Genesys environment prerequisites](#) for compliant versions. For more information about installing GRDT, refer to [Installing the GRDT Component](#) in the the Genesys Rules System Deployment Guide.
- You enabled the Galileo update site in GRDT, as described in [Installing the GRDT Component](#).

Start

1. Open Genesys Rules Development Tool by starting Composer.
2. Navigate to **Window > Preferences**. The **Preferences** window opens.
3. Navigate to **Genesys Rules System > Configuration Server**. Edit the settings.
 - Enter the Configuration Server host name. For instance, localhost.
 - Enter the Configuration Server port. For instance, 2020.
 - Enter the application name for the Rules Authoring Client application. For instance, RulesAuthoringClient.
 - In the Authentication section, enter the name and password for a user who can connect to Configuration Server and click **Apply**.

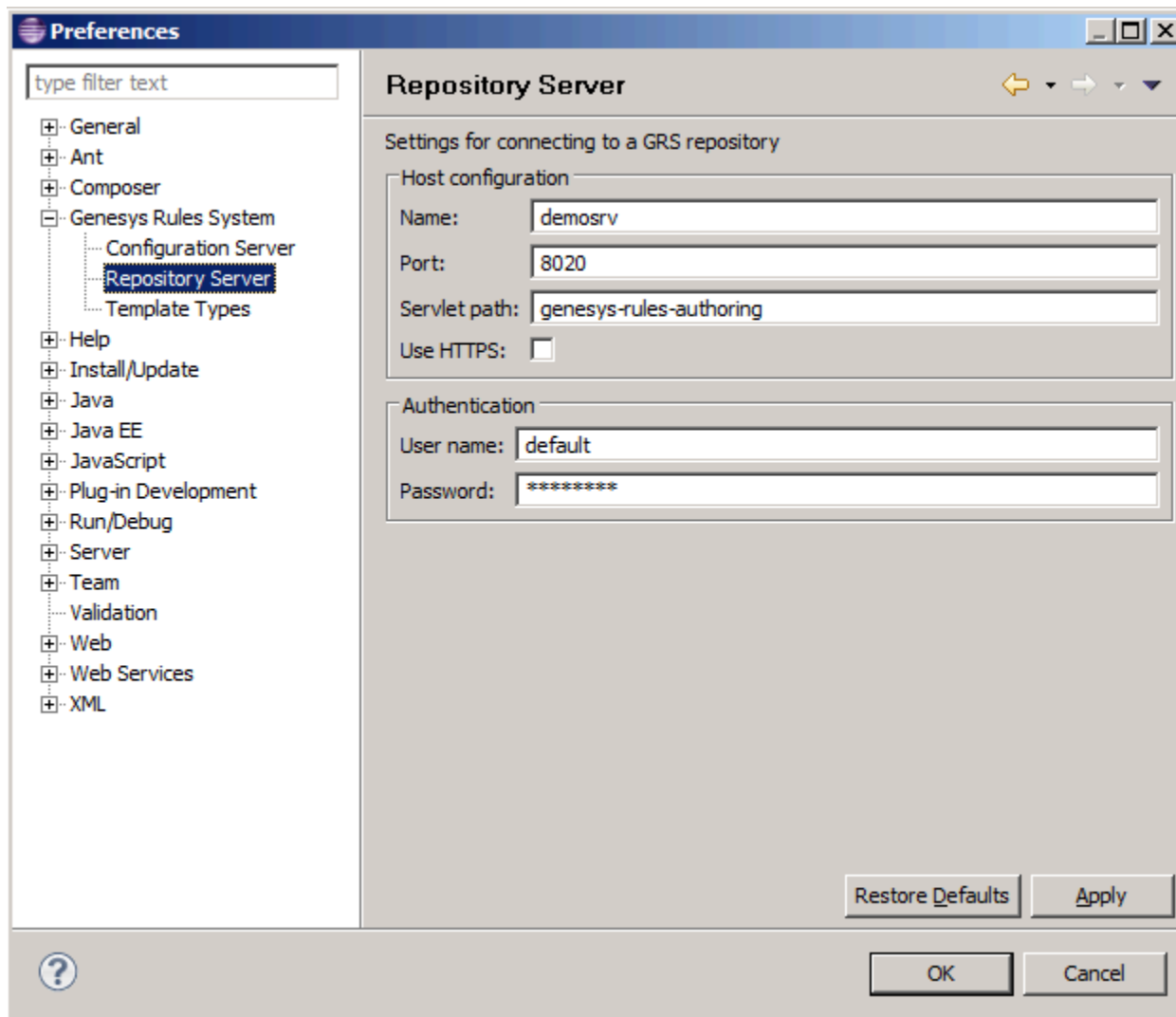


GRDT settings for Configuration Server.

4. Navigate to **Genesys Rules System > Repository Server**. Edit the settings.

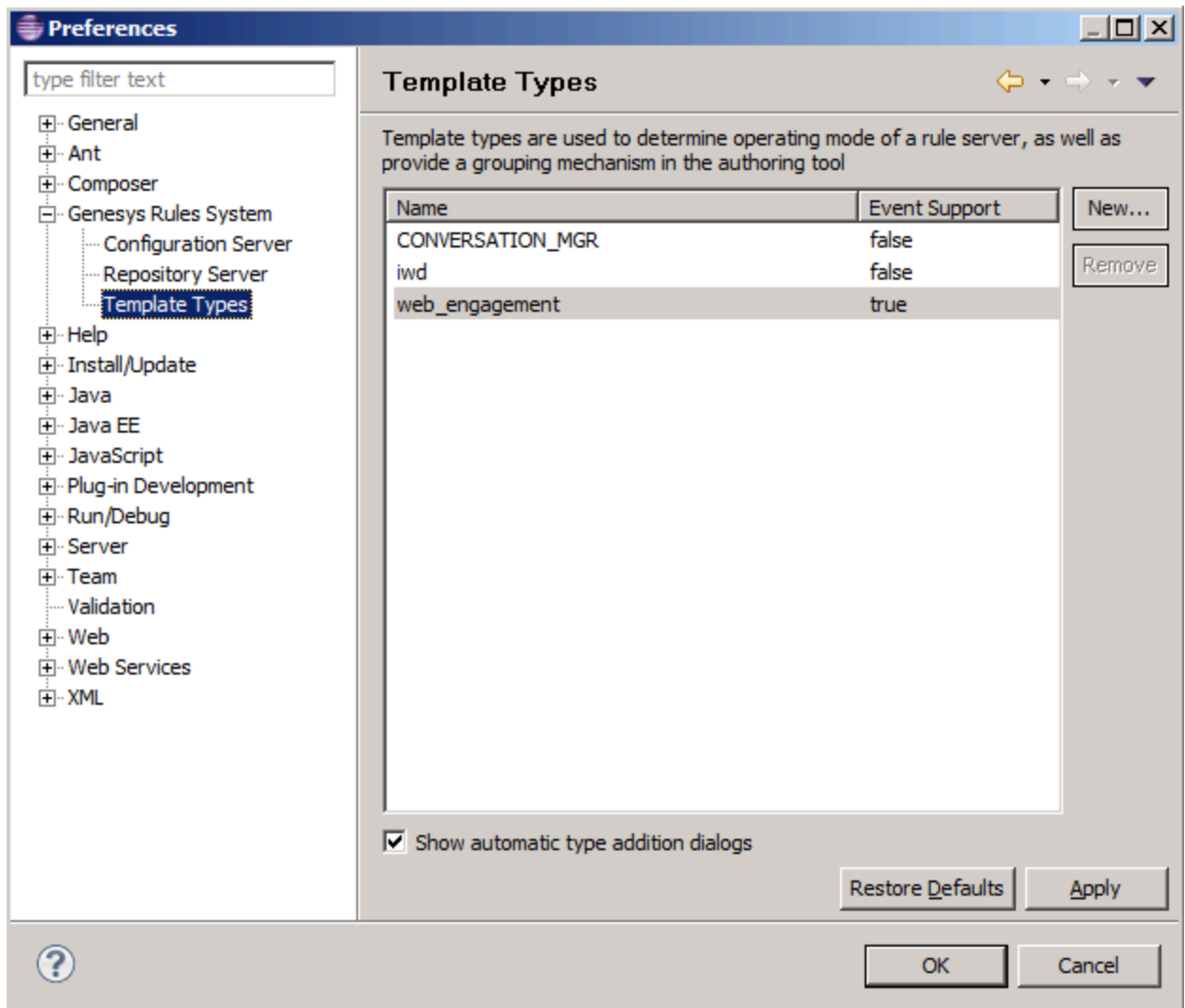
- Enter the Repository Server host name. This is the name of the host specified for the GRS application (application with type Business Rules Execution Server) in Genesys CME. For instance, localhost.
- Enter the Repository Server port. This is the port with the ID genesys - rules - engine that is specified for the GRS application (with type Business Rules Execution Server) in Genesys CME. For instance, 8020.
- Enter the Servlet path as genesys - rules - authoring.
- In the Authentication section, enter a name and password for a user who:
 - Has Read and Execute permissions for the Genesys Rules Authoring client application (set up in Configuration Server); this user must have explicit Read and Execute permissions or must belong to an access group with those permissions.
 - Belongs to a Role with the following privileges: Template - Create, Template - Modify, Template - Delete.

5. Click **Apply**.



GRDT settings for the Repository Server.

6. Navigate to **Genesys Rules System > Template Types**. If it is not present, add the **web_engagement** template type and set **Event Support** to true. Click **Apply**.



Template types in Composer

7. Click **OK**.

End

Configuring Genesys Rules Authoring Tool

Prerequisites

- Your environment includes Genesys Rules Authoring Tool (GRAT). See [Genesys environment prerequisites](#) for compliant versions. For more information about installing GRAT, refer to the [Genesys Rules System Deployment Guide](#).

Start

- In Genesys Administrator, navigate to **Provisioning > Environment > Applications**, select the GRAT application (the application with type Business Rules Execution Server), and click **Edit**.

2. In the Connections section, click **Add...**
3. Select the Genesys Web Engagement Cluster and click **OK**.
4. Select the Web Engagement Cluster in the list of connections and click **Edit**.
5. In the **Connection Info** window, select default for the ID field. Click **OK**.

ID is set to the default port.

6. Select the **Options** tab.
7. In the **[settings]** section, set **verify-deploy-address** to false. You must set this option because in Genesys Web Engagement, rule packages are deployed to the Web Engagement Server, not to Genesys Rules Engine. When set to false, this option prevents GRS from trying to verify that the server deploying the rules is Genesys Rules Engine.

Configuration

Options

Permissions

Dependencies

Alarms

Logs

New

Delete

Export

Import

View: Advanced View (Options)

Name	Section	Option	Value
Filter	Filter	Filter	Filter

settings (6 Items)

settings/group-by-level	settings	group-by-level	false
settings/max-connections	settings	max-connections	99
settings/session-timeout	settings	session-timeout	30
settings/session-timeout-alert-interval	settings	session-timeout-aler...	1
settings/strict-mode	settings	strict-mode	true
settings/verify-deploy-address	settings	verify-deploy-address	false

verify-deploy-address is set to false.

8. In the **Security** tab, set a user who has Read, Create, Change rights for the Scripts folder in **Log On As**. This user should also have: Read access to all tenants which are supposed to be used; Role with

sufficient permissions (as detailed in [Genesys Rules System Deployment Guide](#)); Read access to Business Structure folder and associated nodes that are supposed to be used; Read access to Scripts folder and Scripts objects (which are representations of the rule templates).

9. Click **Save & Close**.

End

(Optional) Configuring Roles Settings for Rules Management

You should complete this procedure if you need to import permissions to enable a user to create rules for Genesys Web Engagement. Once roles are imported, you can assign them to the user who publishes the rule templates and creates rules for GWE.

You should not complete this procedure if you have already created a user who has permissions to create rules packages in Genesys Rules Authoring (as described in the "Role-based Access Control" chapter of the [Genesys Rules System Deployment Guide](#)).

Start

1. In Genesys Administrator, navigate to **Provisioning > Accounts > Roles** and click **New...**
2. Enter a name for the new role. For example, GWE_Rules_Administrator.
3. In the Members section, you can specify who should have this role. Click **Add** to add as many access groups or users as you need.

GWE_Rules_Administrator - \Roles

Cancel Save & Close Save Save & New Reload Validate Permissions

Configuration Role Privileges Permissions

*** General**

* Name: GWE_Rules_Administrator

Description: in GRDT - import or create, modify and publish templates, in GRAT - create, modify, delete and

Tenant: Environment

State: ☒ Enabled

Members

Users:

User Name	Agent	Last Name	First Name
No objects to display			

Access Groups:

Name	Type
No objects to display	

New Role

4. Select the **Role Privileges** tab and select Genesys Rules Authoring Tool. The privileges for GRAT are added to the GWE_Rules_Administrator role.

GWE_Rules_Administrator - \Roles

Cancel Save & Close Save Save & New Reload Validate Permissions

Configuration **Role Privileges** Permissions

Allow All Export Import

Add/Remove Products

☐ Interaction Workspace

☒ Genesys Rule Authoring Tool

☐ Genesys Administrator

Name	Value
Filter	Filter
Rule Authoring (4 Items)	
▶ Create Rule	
▶ Delete Rule	
▶ Modify Rule	
▶ View Rule	
Rule Packages (4 Items)	
▶ Create Package	
▶ Delete Package	
▶ Deploy Package	
▶ Modify Package	
Rule Templates (3 Items)	
▶ Create Template	
▶ Delete Template	
▶ Modify Template	
Business Calendars (4 Items)	
▶ Create Calendar	
▶ Delete Calendar	
▶ Modify Calendar	
▶ View Calendar	

Imported Role Privileges

5. Click **Save & Close**.

End

Members of the GWE_Rules_Administrator role can now do the following:

- Create, modify, and delete rules
- Create, modify, delete, and deploy rule packages
- Create, modify, and publish CEP rule templates

4. Prepare the CEP Rule Templates.

Complete the following procedures to import, configure, and publish the CEP Rule Templates.

Importing the CEP Rule Templates in Genesys Rules Development Tool

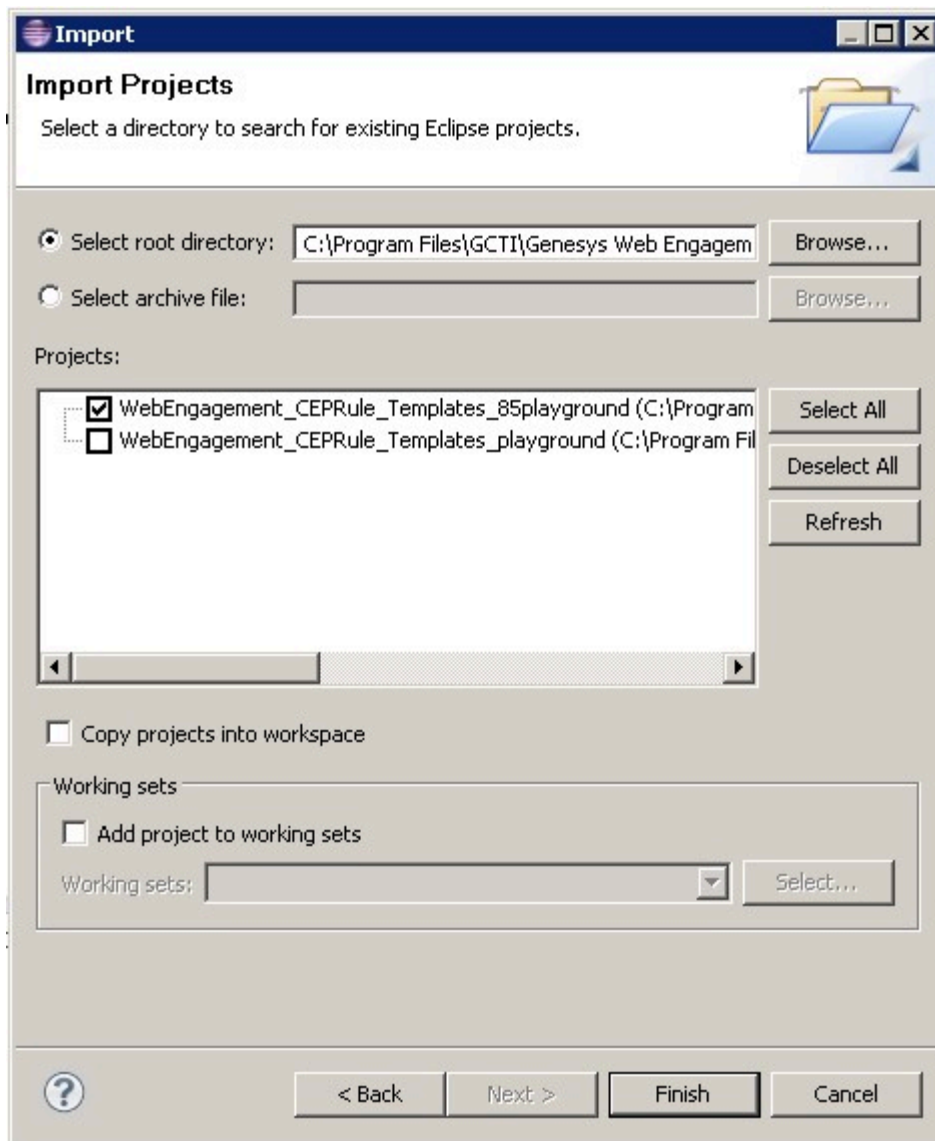
Complete this procedure to import the CEP rule templates in the Genesys Rules Development Tool. Even if you do not plan to customize the templates, your rule template must be published in the Rules System Repository before you try to create rules.

Prerequisites

- The Genesys Rules Development Tool is installed, configured, and opened in Composer.

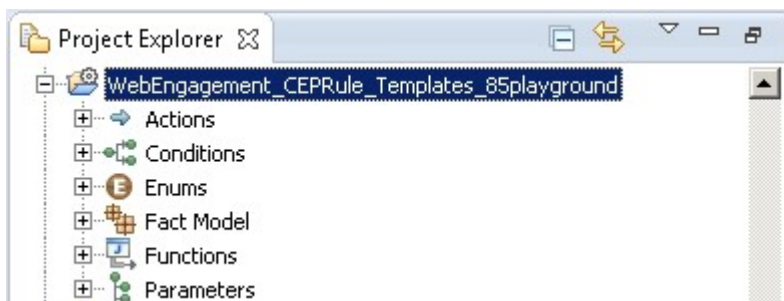
Start

1. Navigate to **Window > Open Perspective > Other > Template Development** to switch to the Template Development perspective of the Genesys Rules Development Tool.
2. Select **File > Import....**
3. In the **Import** dialog window, navigate to **General > Existing Projects into Workspace**. Click **Next**.
4. Select **Select Root Directory:**, then click **Browse**.
5. Import your project, located in the folder at **Web Engagement installation directory\apps\playground\resources_composer-projects\WebEngagement_CEPRule_Templates**. Select the rules template project to import:
 - Browse to the **\apps\playground\resources_composer-projects** folder in the Genesys Web Engagement installation directory and select a project.
 - Click **OK**. **WebEngagement_CEPRule_Templates_playground** is added to the **Projects** list.
 - Select the **WebEngagement_CEPRule_Templates_playground** project.
 - Warning: Do **not** enable the option **Copy projects into workspace**.



Import the default templates by clicking **Finish**.

- Click **Finish** to import the project. **WebEngagement_CEP_Rule_Templates_playground** is added to the **Project Explorer**.



WebEngagement_CEP_Rule_Templates_playground is added to the Project Explorer.

End

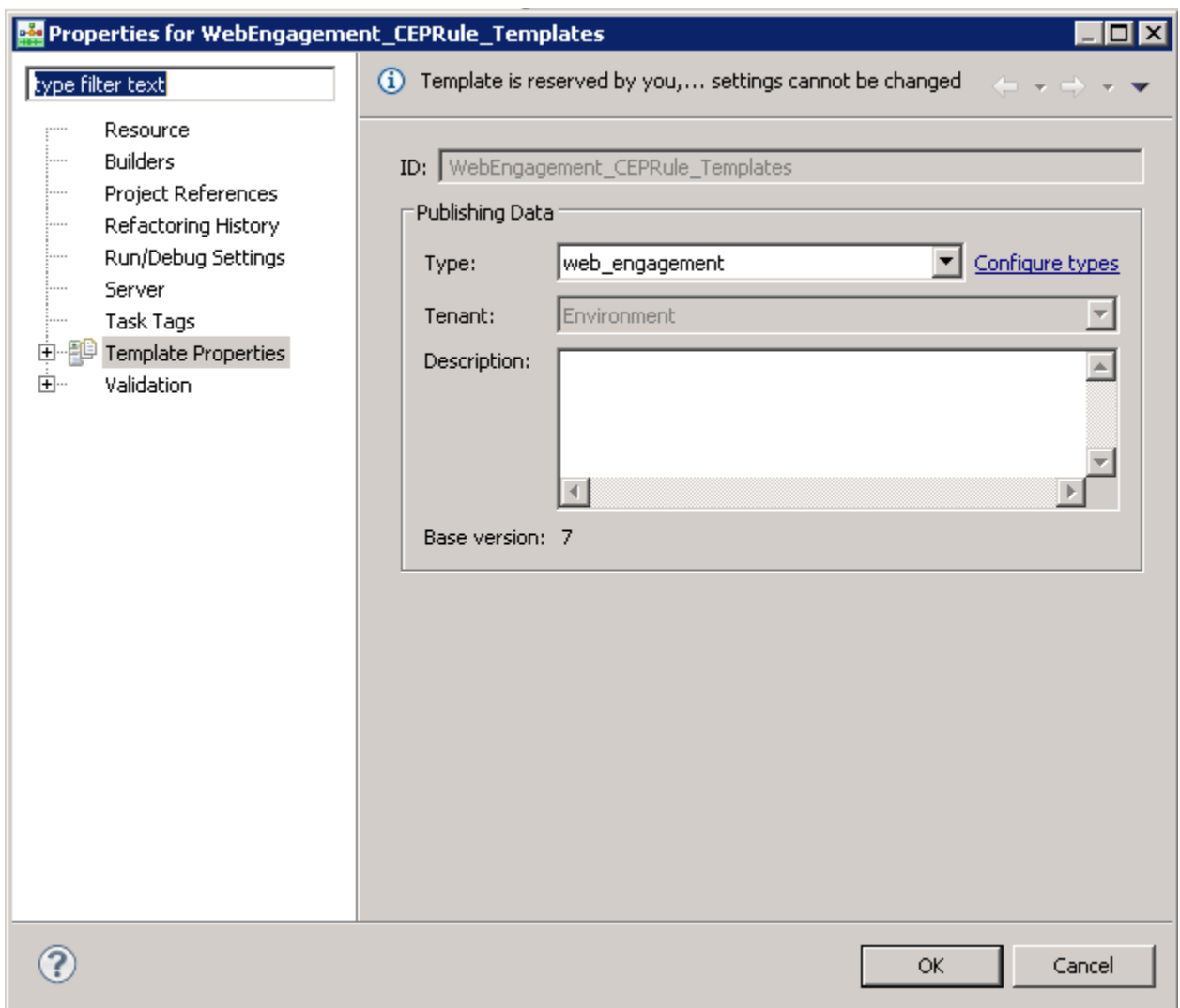
Configuring the CEP Rule Templates

Prerequisites

- The **Web Engagement Categories** business attribute is defined in Genesys Administrator.

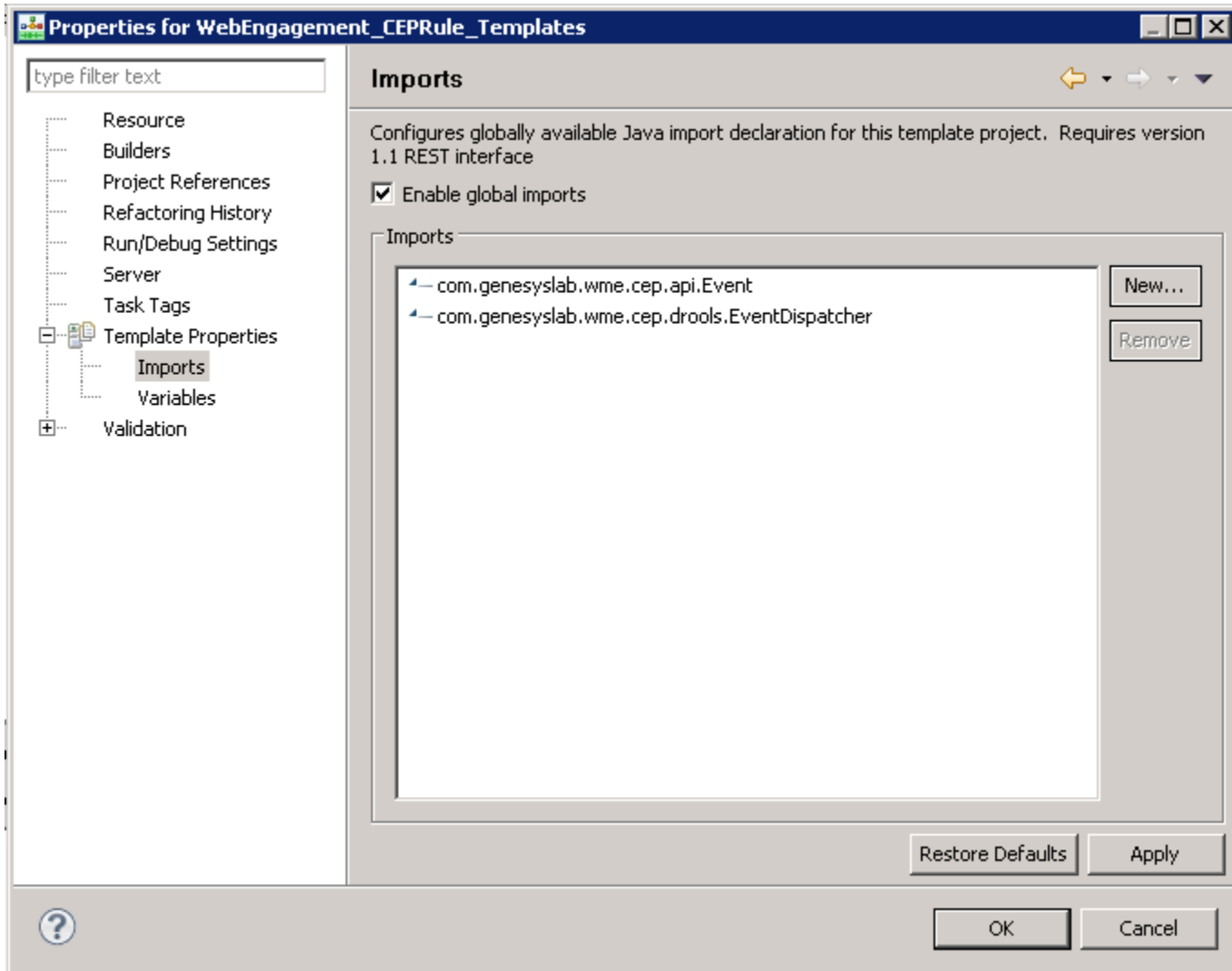
Start

1. In the GRDT **Project Explorer**, right-click on the **WebEngagement_CEPRule_Templates** project. Click **Properties**.
2. In the **Properties** dialog window, navigate to **Template Properties**. In **Publishing Data**, set **Type** to web_engagement.



Set the **type** to web_engagement.

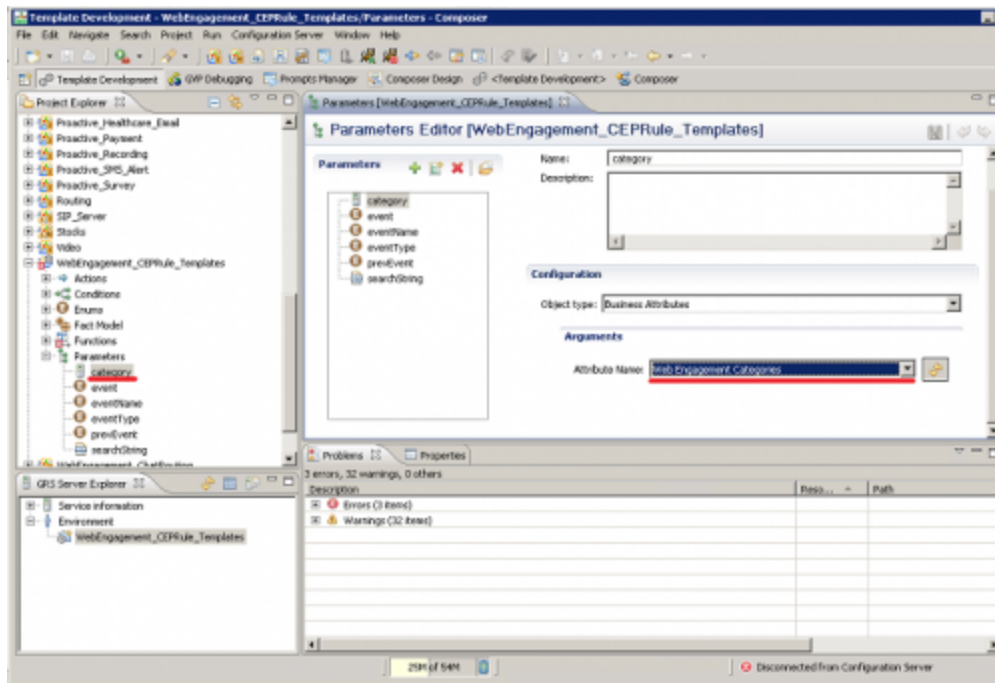
3. Navigate to **Template Properties > Imports**. The **Imports** panel opens.
4. Select the **Enable global imports** option.



Enabling global imports.

Note: The `com.genesyslab.wme.cep.api.Event` and `com.genesyslab.wme.cep.drools.EventDispatcher` packages must be present.

5. Click **OK**.
6. In the **Project Explorer**, navigate to **WebEngagement_CEPRule_Templates > Parameters > category**.
7. In the **Parameters Editor** panel, set **Attribute Name** to Web Engagement Categories.



8. Click **Save**.

End

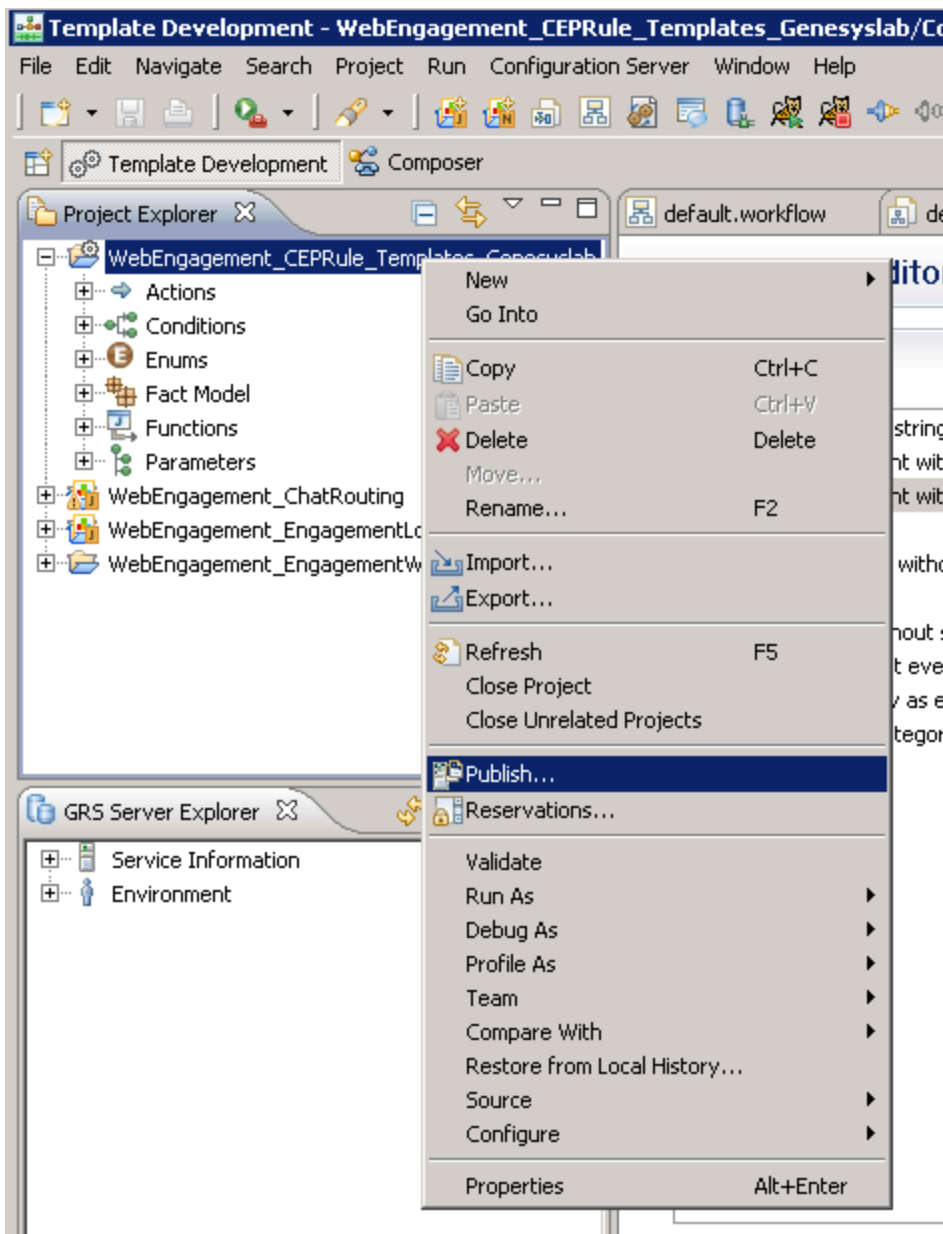
Publishing the CEP Rule Templates in the Rules Repository

Prerequisites

- Your user has the correct permissions to manage rules in GRAT, as detailed in the [Genesys Rules System Deployment Guide](#).
- You configured GRDT to enable a connection to Configuration Server and Rules Repository Server.

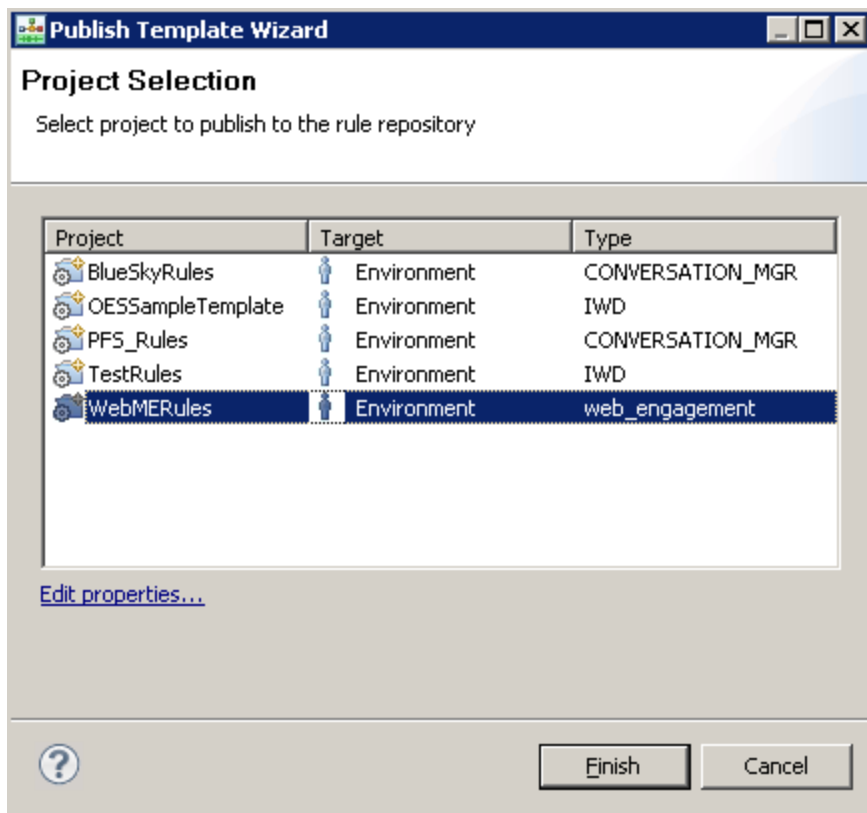
Start

1. In **Project Explorer**, right click **WebEngagement_CEPRule_Templates**.
2. Select **Publish**. The **Publish Template Wizard** opens.



The Publish Template Wizard.

3. Select **WebEngagement_CEP_Rule_Templates**.



Select **WebEngagement_CEP_Rule_Templates**.

4. Click **Finish**.

End

5. Create business rules in Genesys Rules Authoring Tool.

Complete the steps below to create business rules in GRAT to use in our Test Scenario.

Start

1. In GRAT, navigate to your site and select New Rule Package

The screenshot shows the Genesys Rules Authoring application. The left sidebar displays a tree view of environments: Environment, ACME Solution, BlueSky, Demo Solution, Playground (highlighted with a 'New Rule Package' button), Premier Financial Services, and Social. The main area is titled 'GENESYS RULES AUTHORIZING' and shows the 'General' tab for a new rule package. The fields are filled with: Package Name: com.playground, Business Name: Playground Rules, Package Type: web_engagement, and Description: Rules for the Playground application test scenario. Below these fields is a table of templates. The first row is selected. Buttons for 'Import Rule Package', 'Export Rule Package', 'Save', 'Cancel', and 'Delete' are visible.

Selected	Name	Version	Version Comment	Modified By	Date Modified
<input checked="" type="checkbox"/>	WebEngagement_CEP1	1		demo	Jun 27, 2014 4:35 PM
<input type="checkbox"/>	WebEngagement_CEP1	1		demo	Nov 7, 2013 7:49 PM
<input type="checkbox"/>	WebEngagement_CEP1	4		demo	Nov 6, 2013 3:19 PM
<input type="checkbox"/>	WebEngagement_CEP1	3		demo	Oct 29, 2013 11:44 PM
<input type="checkbox"/>	WebEngagement_CEP1	2		demo	Sep 24, 2013 2:48 PM

2. Enter the following information:
 - **Package Name** — com.playground
 - **Business Name** — Playground Rules
 - **Package Type** — Select web_engagement
 - **Description** — Rules for the Playground application test scenario.
 - **Template** — Select the Web Engagement CEP template from the list.
 - Click **Save**.
3. Select the package you just created and select the **Rules** tab.

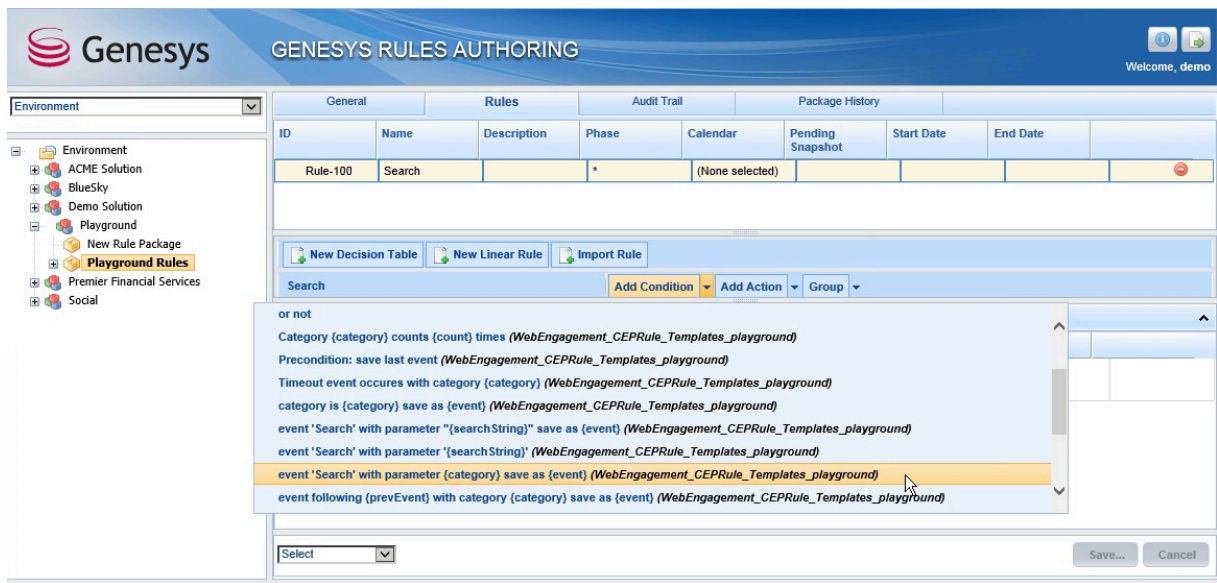


4. Click **New Linear Rule** and enter the following information:

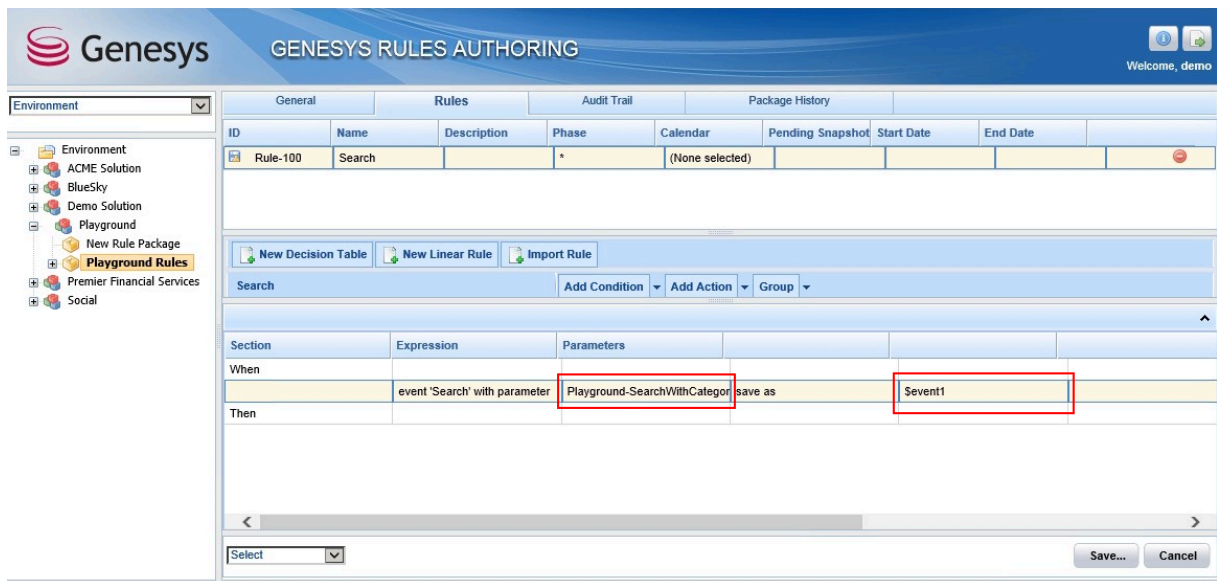
- **Name** — Search
- **Phase** — *



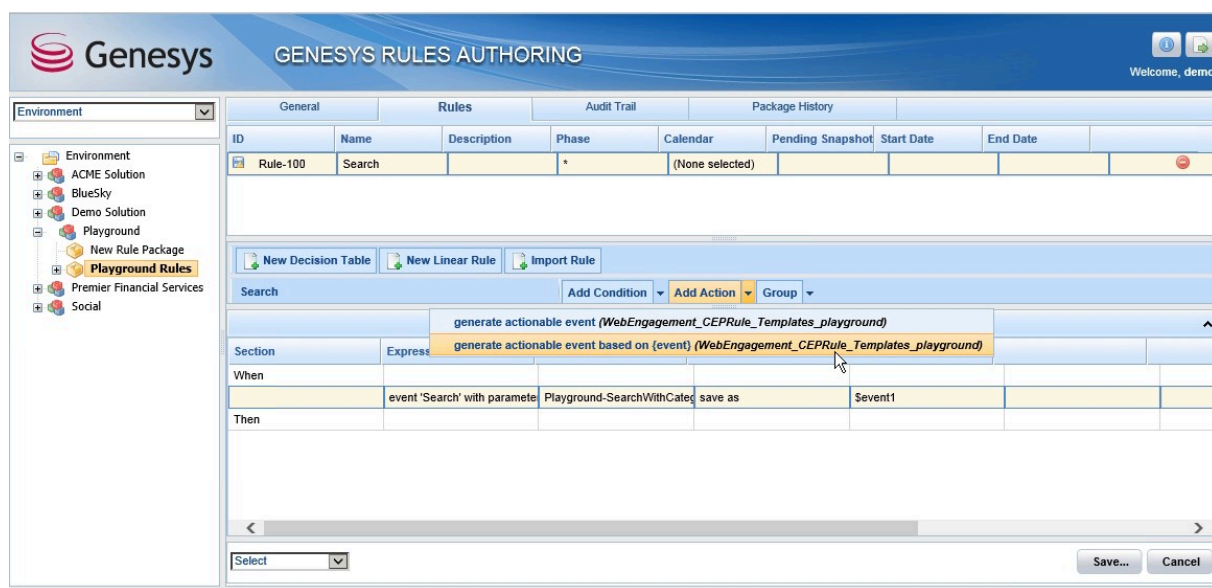
5. Click **Add Condition** and select "event 'Search' with parameter {category} save as {event}".



6. Select "PlayGround-SearchWithCategory" and "\$event1".



7. Click **Add Action** and select "generate actionable event based on {event}".



8. Select "\$event1" from the list.

9. Click **Save**. We now have a business rule for our search with category scenario.

End

6. Deploy rules to the Genesys Web Engagement Environment.

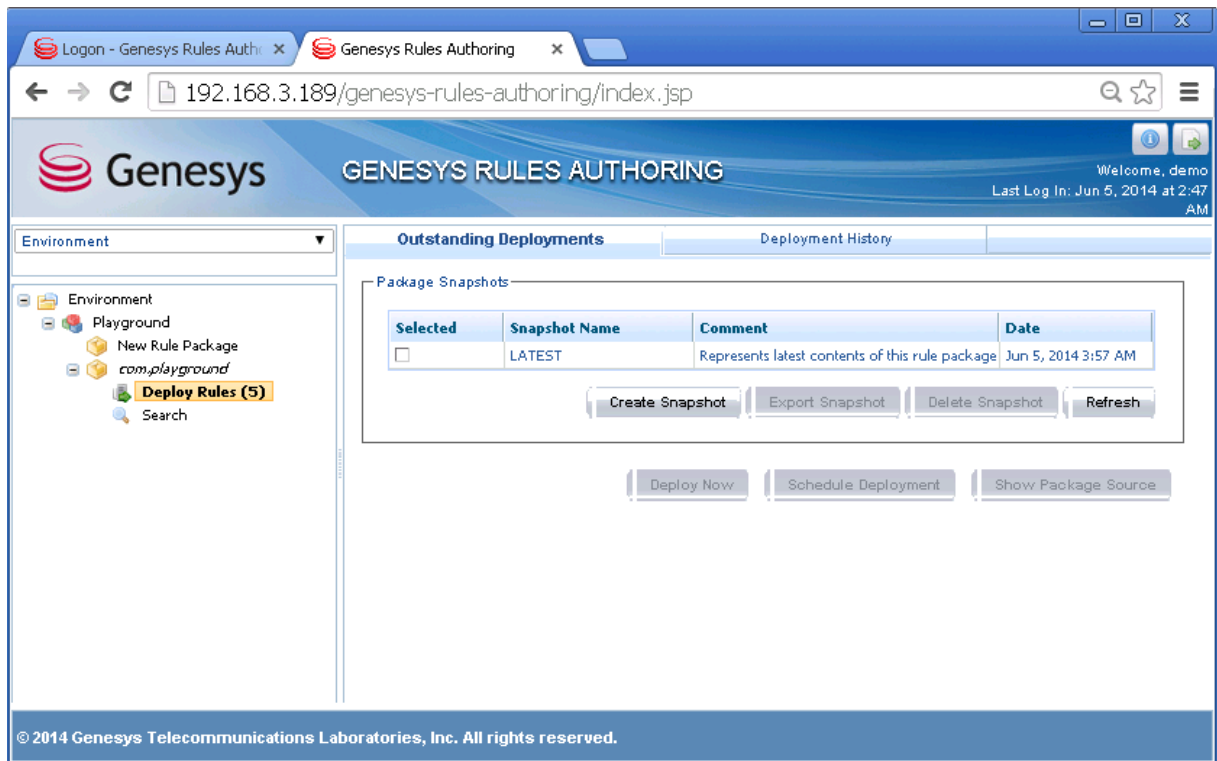
Complete the steps below to deploy your rules to the GWE environment.

Prerequisites

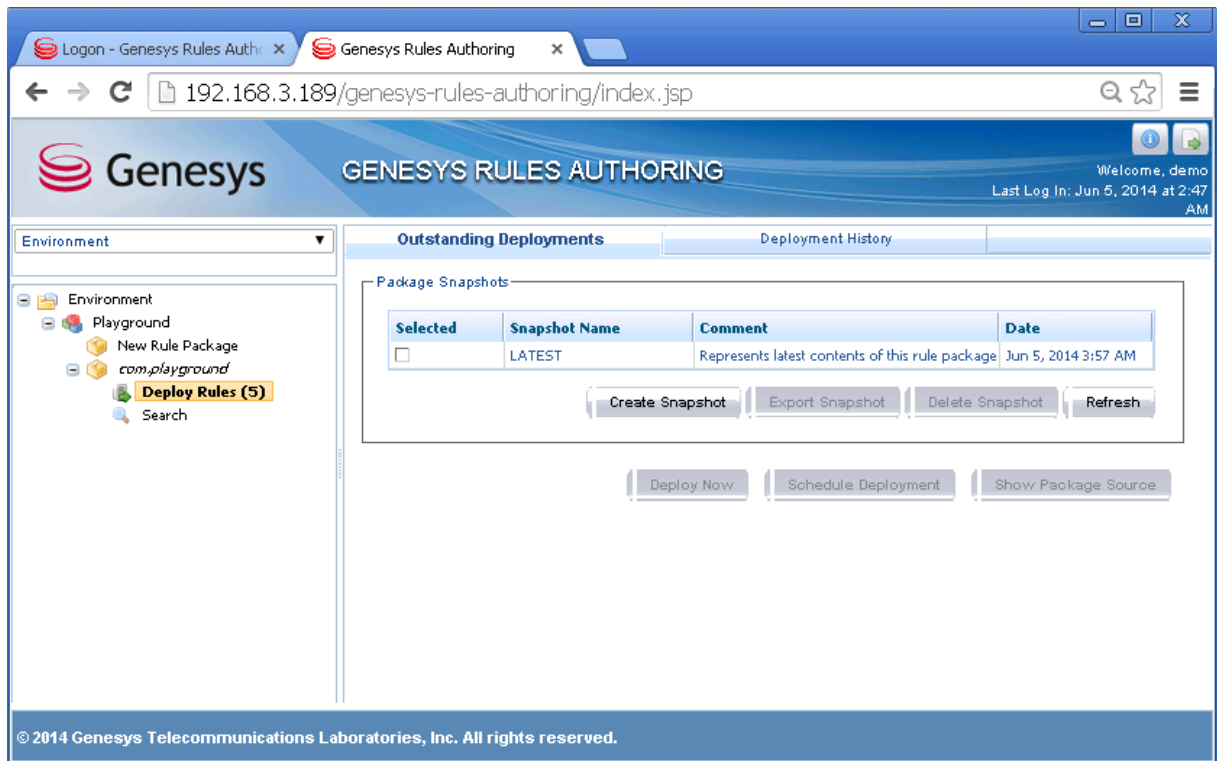
- You started the Web Engagement servers.

Start

1. In Genesys Rules Authoring Tool, navigate to **Solution > your rules package > Deploy Rules**.



2. Select the checkbox next to your rules package in the Package Snapshots section.
3. Click **Deploy Now**. The **Deploy** window opens.
4. Select your Genesys Web Engagement Server for the **Location**.



5. Click **Deploy**. The rules package is deployed to the Web Engagement system.

End

7. Deploy the Playground application.

Warning

Make sure that your GWE Server is running before deploying an application.

Deploying your Application

Start

1. Navigate to the installation directory for Genesys Web Engagement and open a new console window.
2. Type:

```
deploy playground
```

End

8. Make sure the components in your Genesys environment are running.

- Configuration Server
- Universal Routing Server

- [Interaction Server](#)
- [Orchestration Server](#)
- [Stat Server](#)
- [Chat Server](#)
- [Interaction Workspace](#)

9. Start the Web Engagement servers.

Start

To start your servers from Genesys Administrator:

1. Navigate to **Provisioning > Environment > Applications**.
2. Select the Web Engagement Server.
3. Click **Start applications** in the **Runtime** panel.

To start your servers using the provided **start** script (**start.bat** on Windows and **start.sh** on Linux):

1. Navigate to the Web Engagement installation directory and launch a console window.
 - For Windows, type: `start.bat`
 - For Linux, type: `start.sh`

End

The Web Engagement Server is started.

10. Confirm that the test scenario is a success by walking through the [Test Scenario Steps](#).

Other Test Scenarios

You can use the Playground application to complete the following test scenarios:

- Entrance to a specific page (Singleton)
- Inactivity timeout for the user (Singleton)
- Select an element on the page (Singleton)
- Search
- Get information about user
- Successful completion of the wizard (Sequence)
- Go to the previous page of the wizard (Sequence)
- Repeated input on the same page (Counter)
- Send custom event
- Changing the type of invitation depending on the status of the user (gold, platinum)
- Filling out the form (Sequence)
- Display advertisement (Sequence)