



This PDF is generated from authoritative online content, and is provided for convenience only. This PDF cannot be used for legal purposes. For authoritative understanding of what is and is not supported, always use the online content. To copy code samples, always use the online content.

Reporting Guide

CCPulse Standard Reporting Templates

12/19/2025

CCPulse Standard Reporting Templates

Contents

- 1 CCPulse Standard Reporting Templates
 - 1.1 Pre-engagement Phase Templates
 - 1.2 Engagement Phase Templates
 - 1.3 Importing Genesys Web Engagement Sample Reporting Templates in CCPulse+

Genesys Web Engagement provides the following standard reporting templates that can be imported into CCPulse+:

Pre-engagement Phase Templates

Web Engagement includes standard reporting templates for each Web Engagement statistics queue.

Reporting Template	Interaction Queue
WebEng_Accepted.xtpl	Webengagement_Accepted
WebEng_Engaged.xtpl	Webengagement_Engaged
WebEng_Failed.xtpl	Webengagement_Failed
WebEng_Missed.xtpl	Webengagement_Missed
WebEng_Qualified.xtpl	Webengagement_Qualified
WebEng_Rejected.xtpl	Webengagement_Rejected
WebEng_Timeout.xtpl	Webengagement_Timeout

Engagement Phase Templates

Web Engagement includes the following types of standard reporting templates for the engagement phase:

- Report templates on chat and web callback interactions triggered by the Web Engagement process and processed by an agent.
- Report templates for rule based reporting based on the data attached to chat and web callback interactions triggered by the Web Engagement process and processed by an agent.

Importing Genesys Web Engagement Sample Reporting Templates in CCPulse+

Note: For information about using CCPulse+, click Help in the CCPulse+ user interface or see the [Reporting 8.0 CCPulse+ Administrator's Guide](#). The Web Engagement templates for CCPulse+ have an extension of .xtpl, which is an XML format. The documentation for CCPulse+ does not distinguish files by extension and refers to .xtpl files as XML files.

Prerequisites

- You have installed CCPulse+ version 8.0.000.36 (or later).
- You are a CCPulse+ administrator.

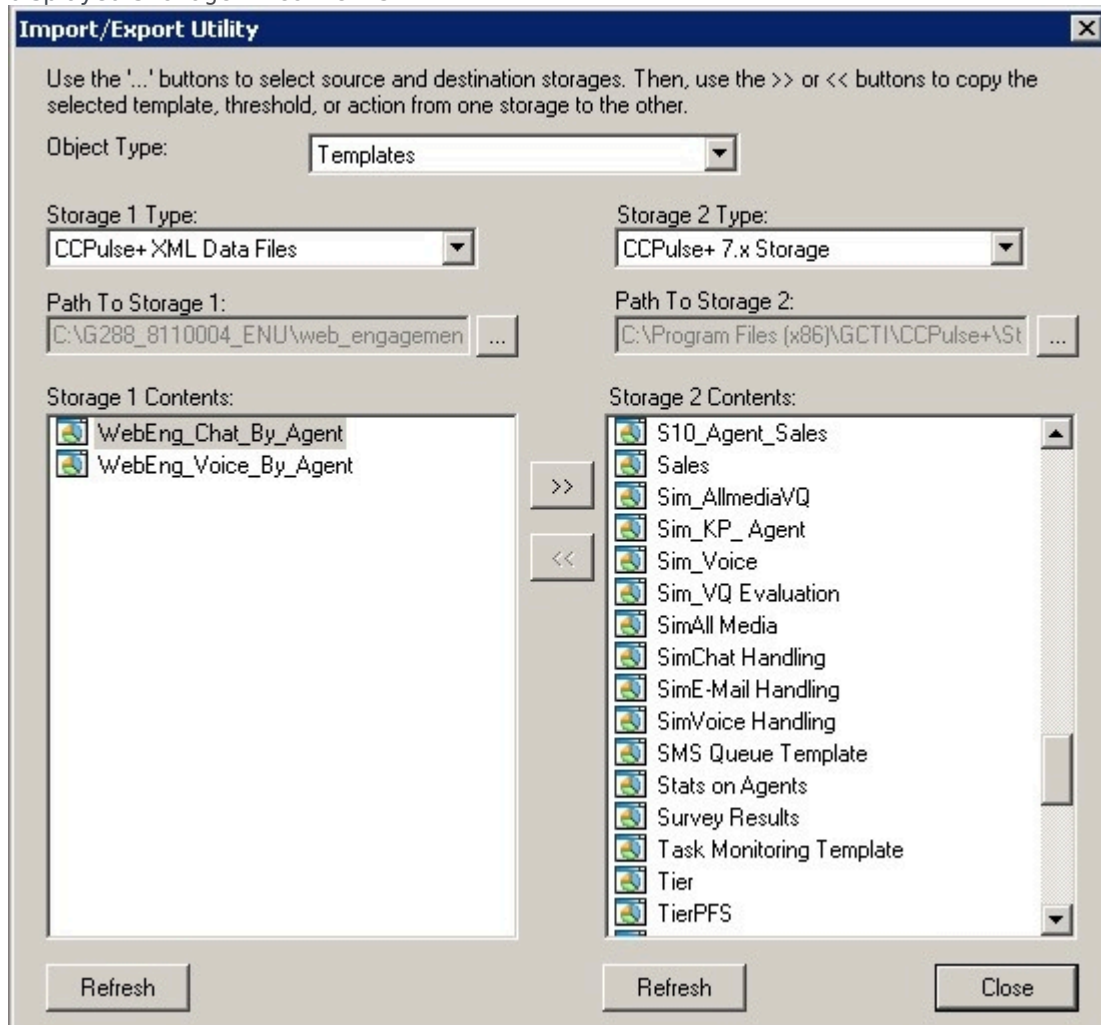
Start

1. Open CCPulse+ and navigate to Tools > Import/Export. The Import/Export Utility opens.

2. Select Templates for the Object Type.

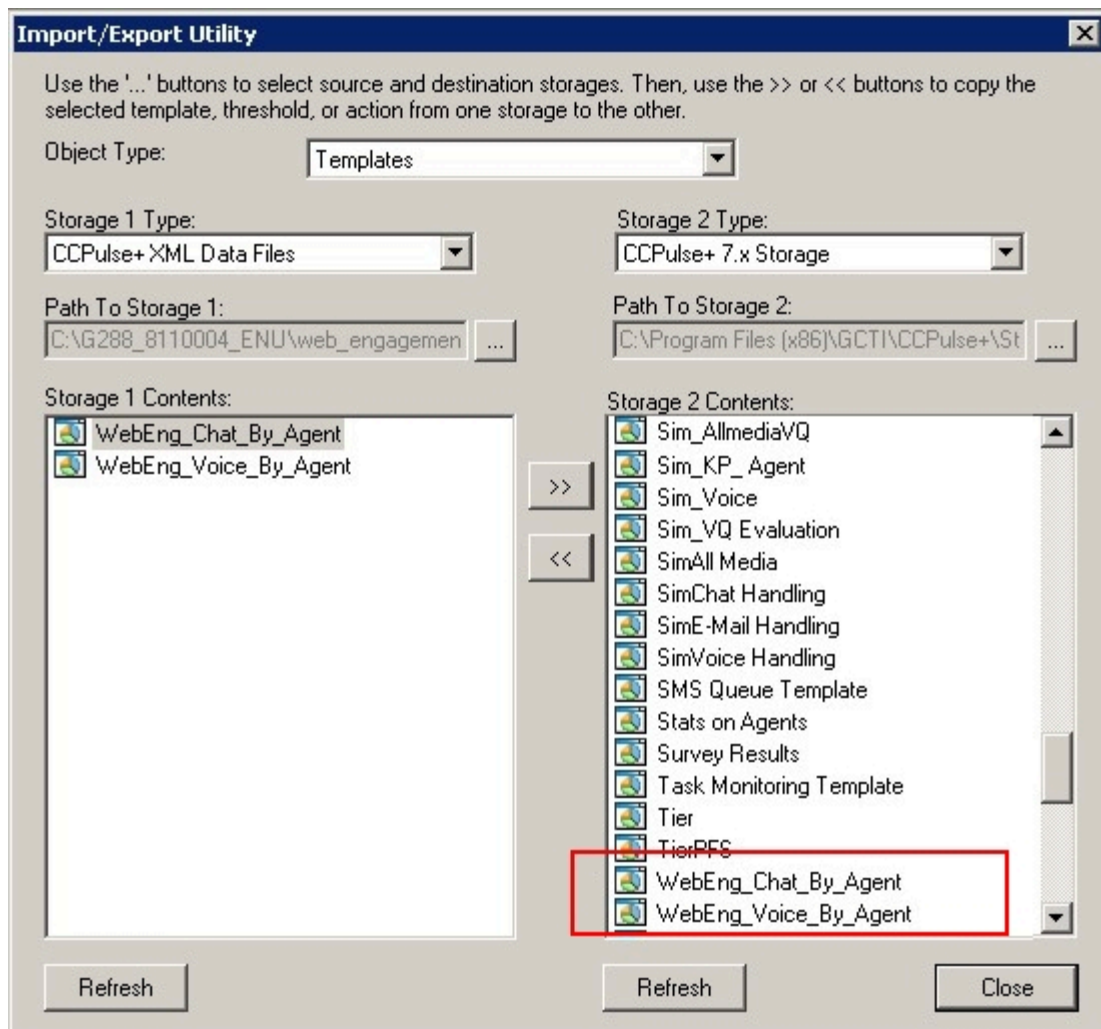
3. Choose the import source.

- For Storage 1 Type, select CCPulse+ XML Data Files.
- For Path To Storage 1, click ... and select the path to the reporting XML template(s) you wish to import. The Genesys Web Engagement Sample Reporting Templates are located in the web_engagement_reporting_template directory on your installation CD.
- Click Open. The reporting templates are displayed in the Storage 1 Contents box below. For example, if you select the Web Engagement Media Based folder for Path To Storage 1, the reporting templates WebEng_Chat_By_Agent.xtpl and WebEng_Voice_By_Agent.xtpl are displayed Storage 1 Contents.



4. Choose the import destination.

- Select CCPulse+ 7.x Storage for the Storage 2 Type.
- Select a template in Storage 1 Contents and click the >> button. The template is copied to the Storage 2 Contents box. Repeat for each template you wish to copy from Storage 1 Contents.



5. Repeat steps 3 and 4 for each template you would like to import into CCPulse+.
6. Click Close. The Import/Export Utility closes.

End