



This PDF is generated from authoritative online content, and is provided for convenience only. This PDF cannot be used for legal purposes. For authoritative understanding of what is and is not supported, always use the online content. To copy code samples, always use the online content.

# Service Management UI Help

Examples of Call Flows for Access Number Allocation

12/15/2025

---

## Contents

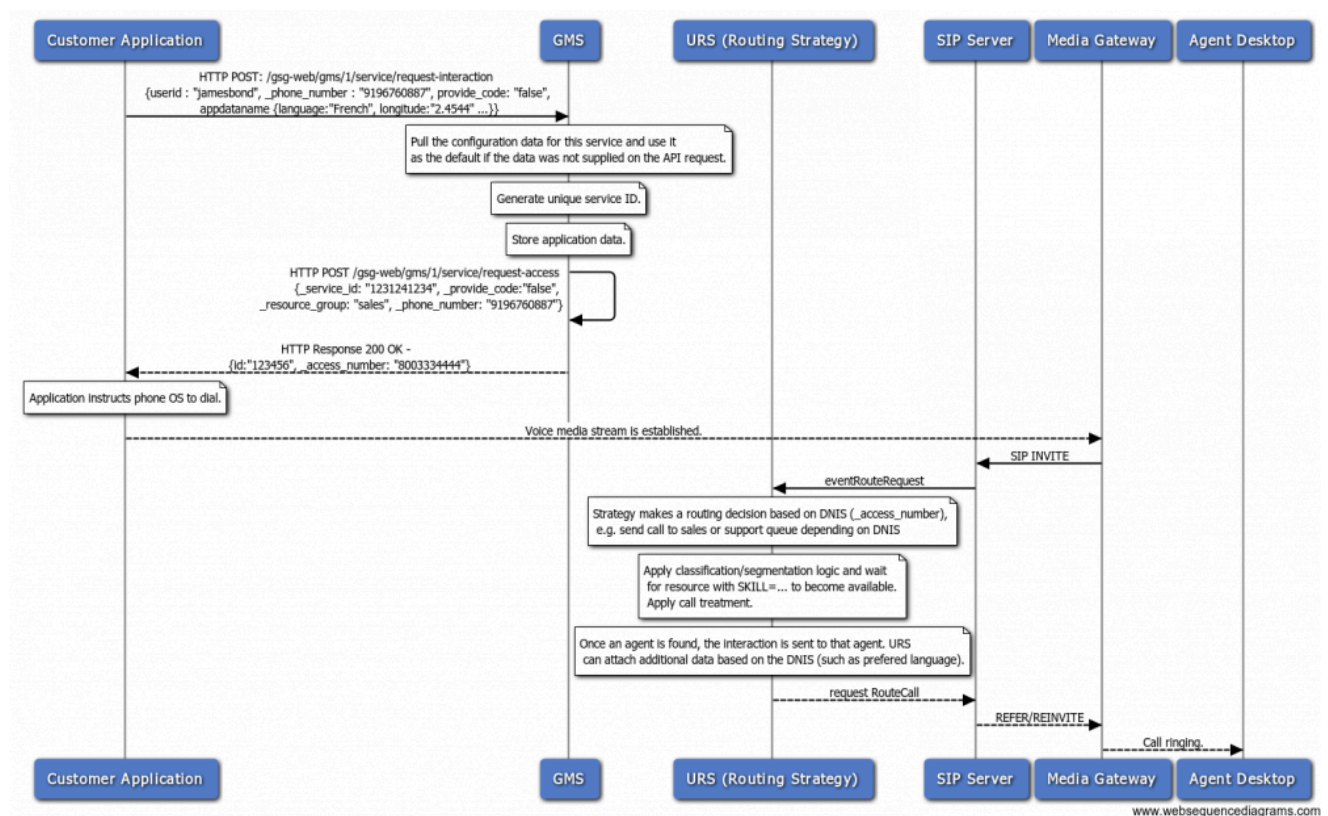
- 1 Examples of Call Flows for Access Number Allocation
  - 1.1 No Locking
  - 1.2 Locking

# Examples of Call Flows for Access Number Allocation

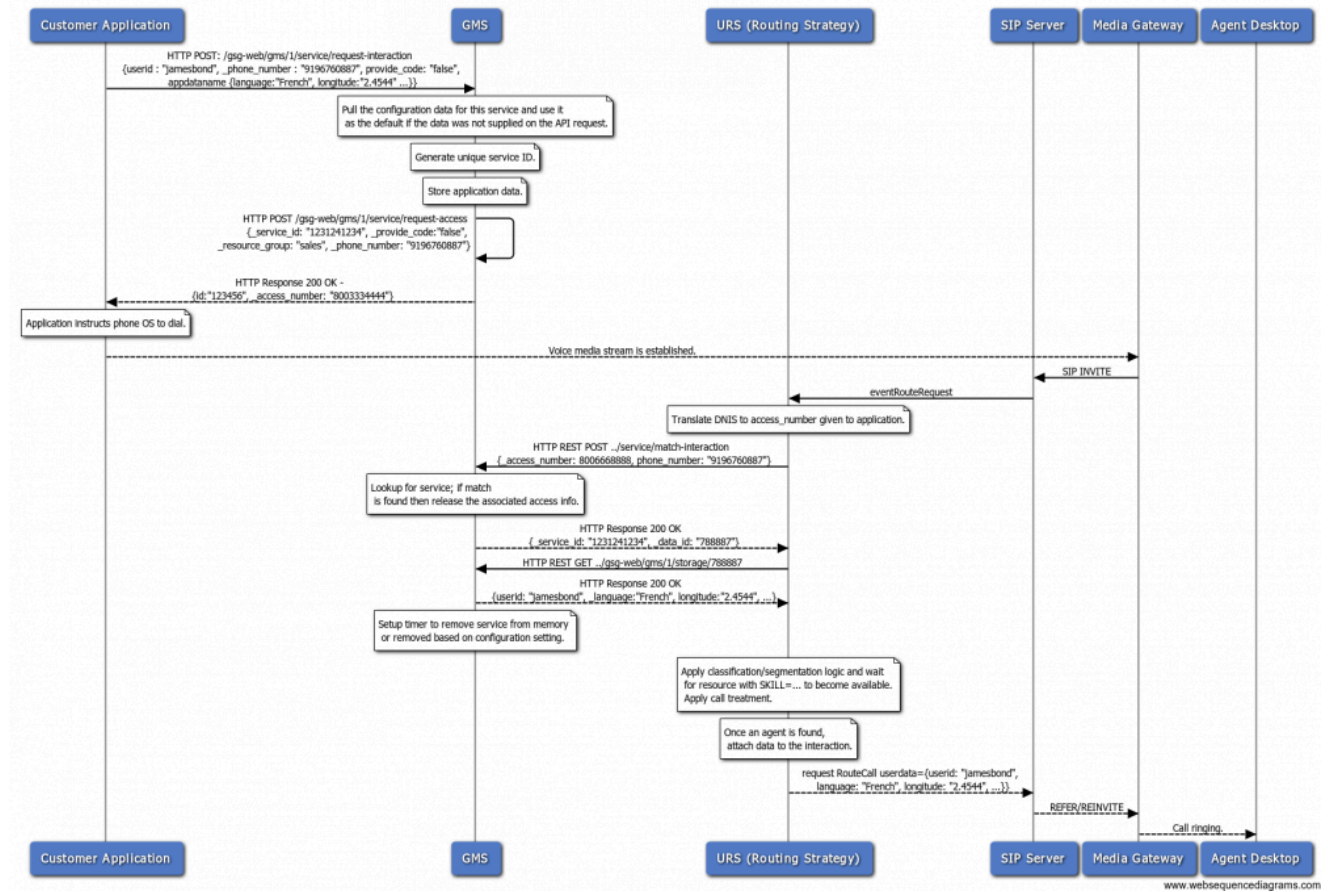
The following call flows show how you can use the following builtin services to implement access number allocation.

## No Locking

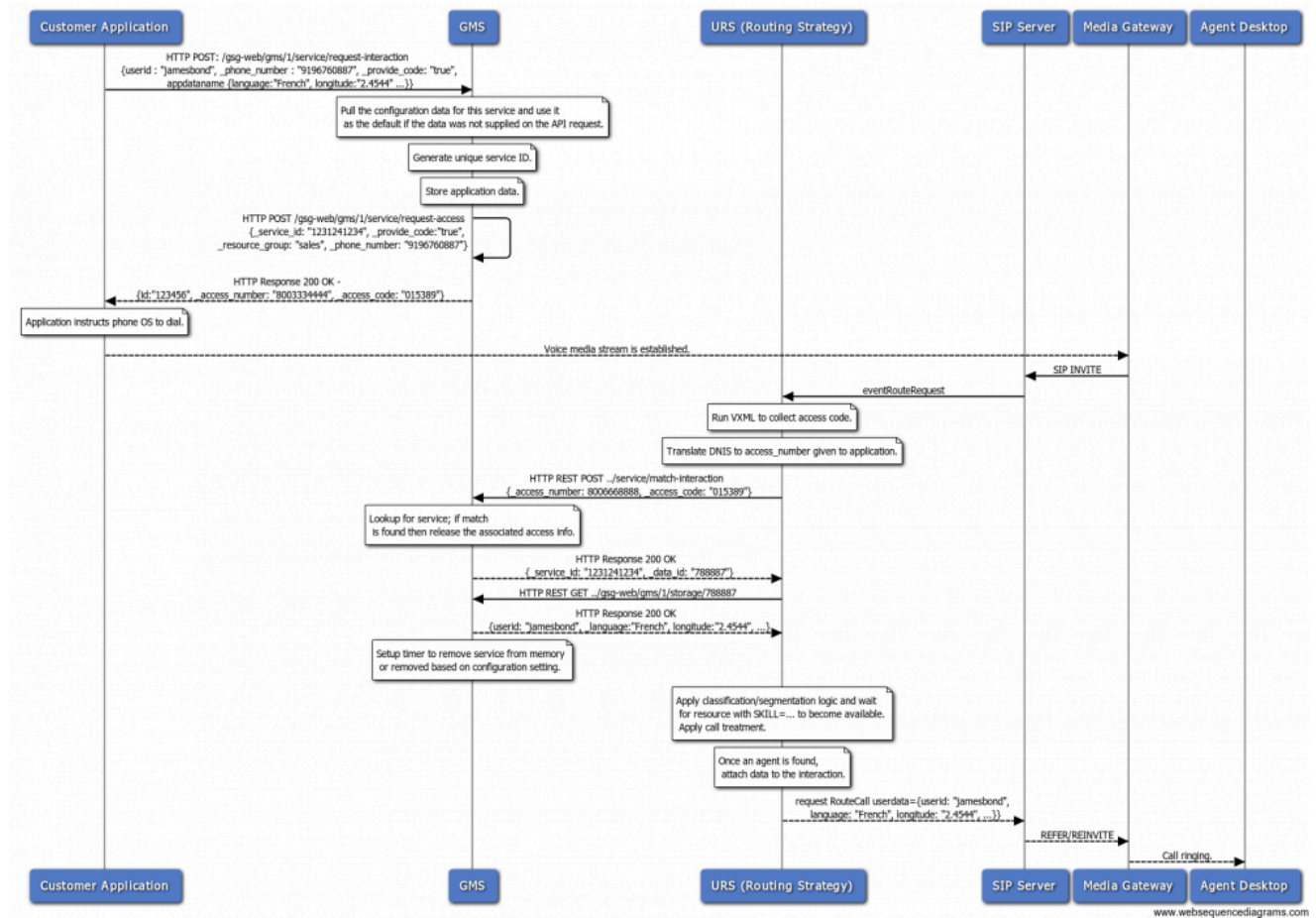
DNIS only - no match is done here



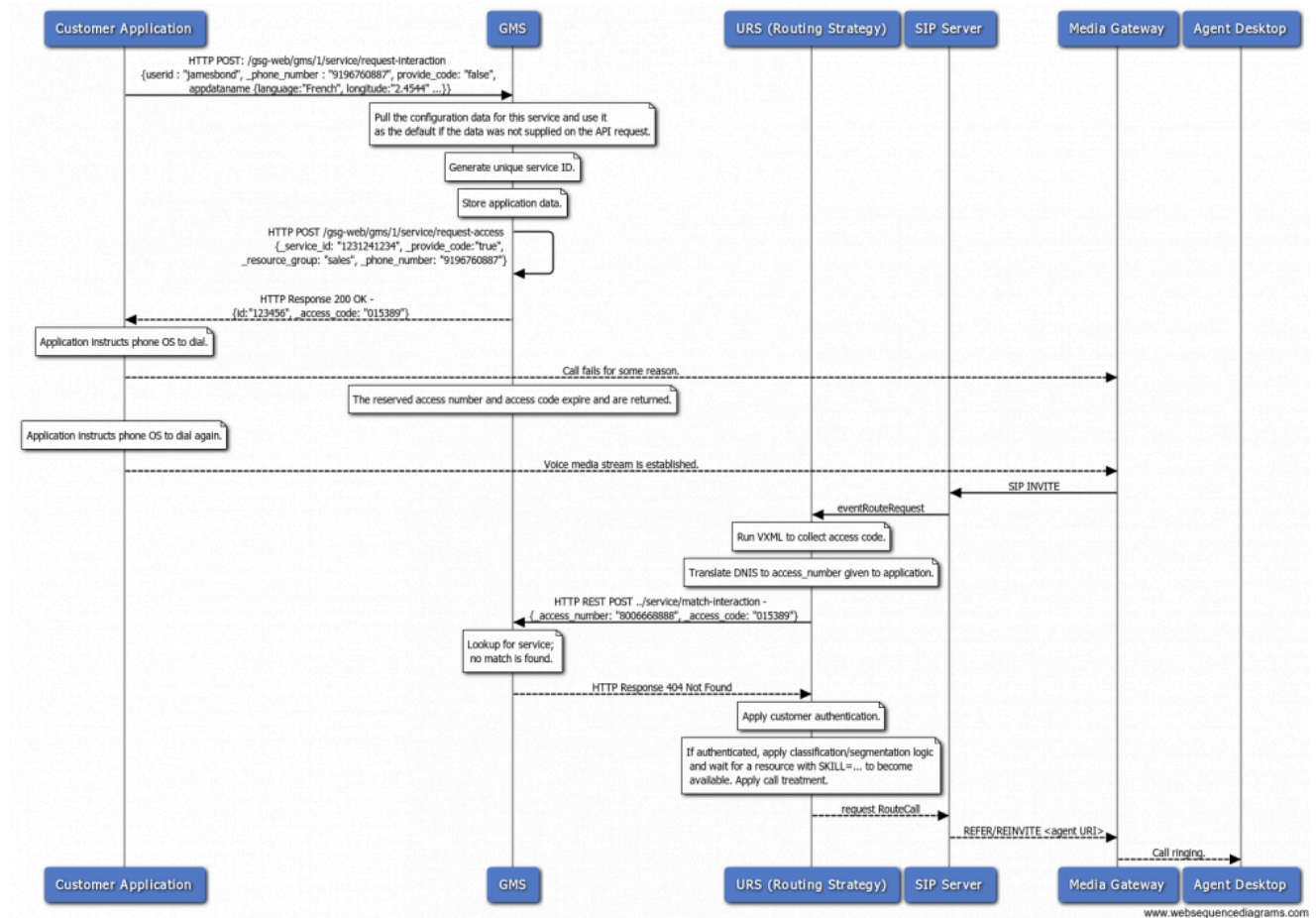
### Match DNIS + ANI



## Match DNIS + Access Code



### No Match



### Locking

The only difference between locking and non-locking call flows is the algorithm that determines how access numbers are handed out. In this case, a given access number is only assigned to a single service which allows for a more reliable match.

#### Match DNIS + ANI

Same as the equivalent no lock case.

#### Match DNIS + Access Code

Same as the equivalent no lock case.

### No Match

Same as the equivalent no lock case.