



This PDF is generated from authoritative online content, and is provided for convenience only. This PDF cannot be used for legal purposes. For authoritative understanding of what is and is not supported, always use the online content. To copy code samples, always use the online content.

# Service Management UI Help

Access Number Allocation Call Flows

5/2/2025

---

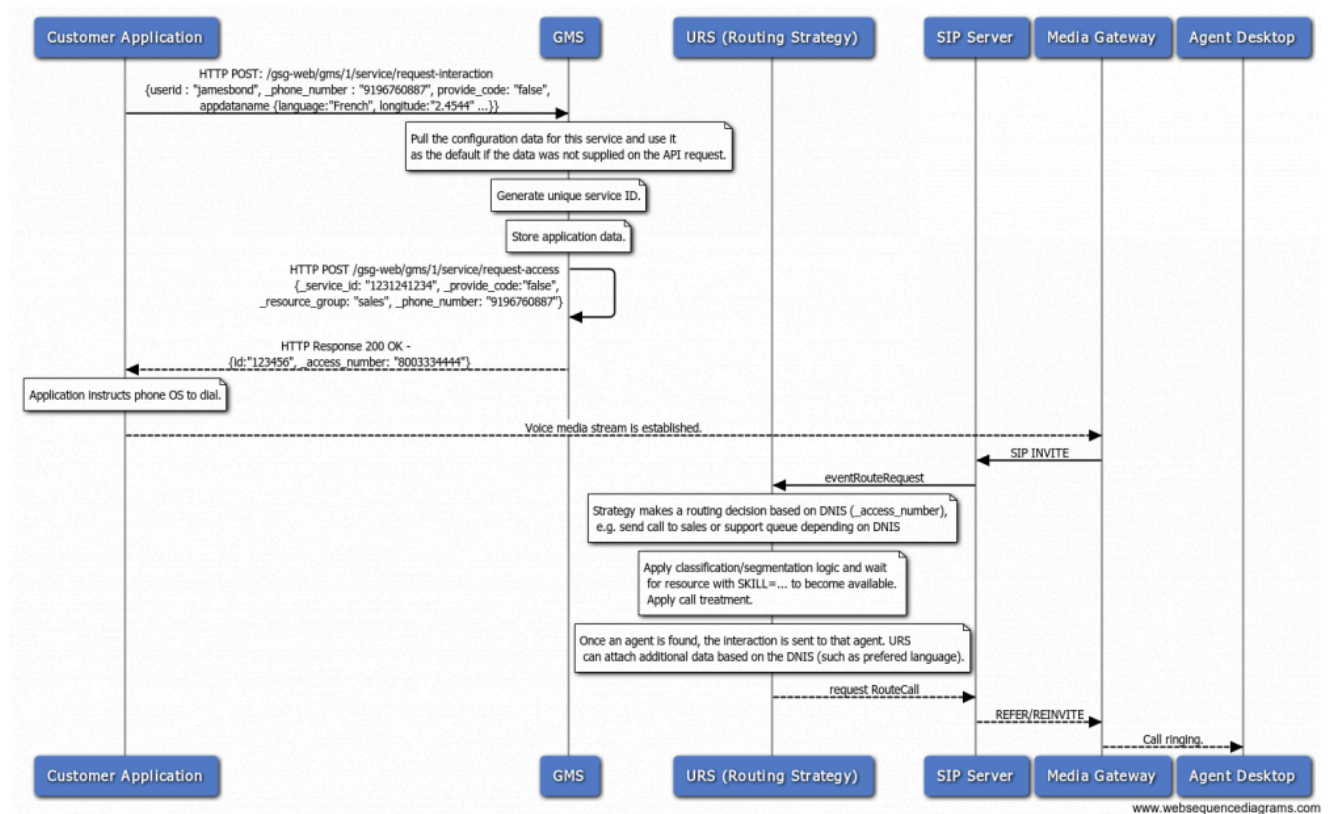
## Contents

- 1 Access Number Allocation Call Flows
  - 1.1 No Locking
  - 1.2 Locking

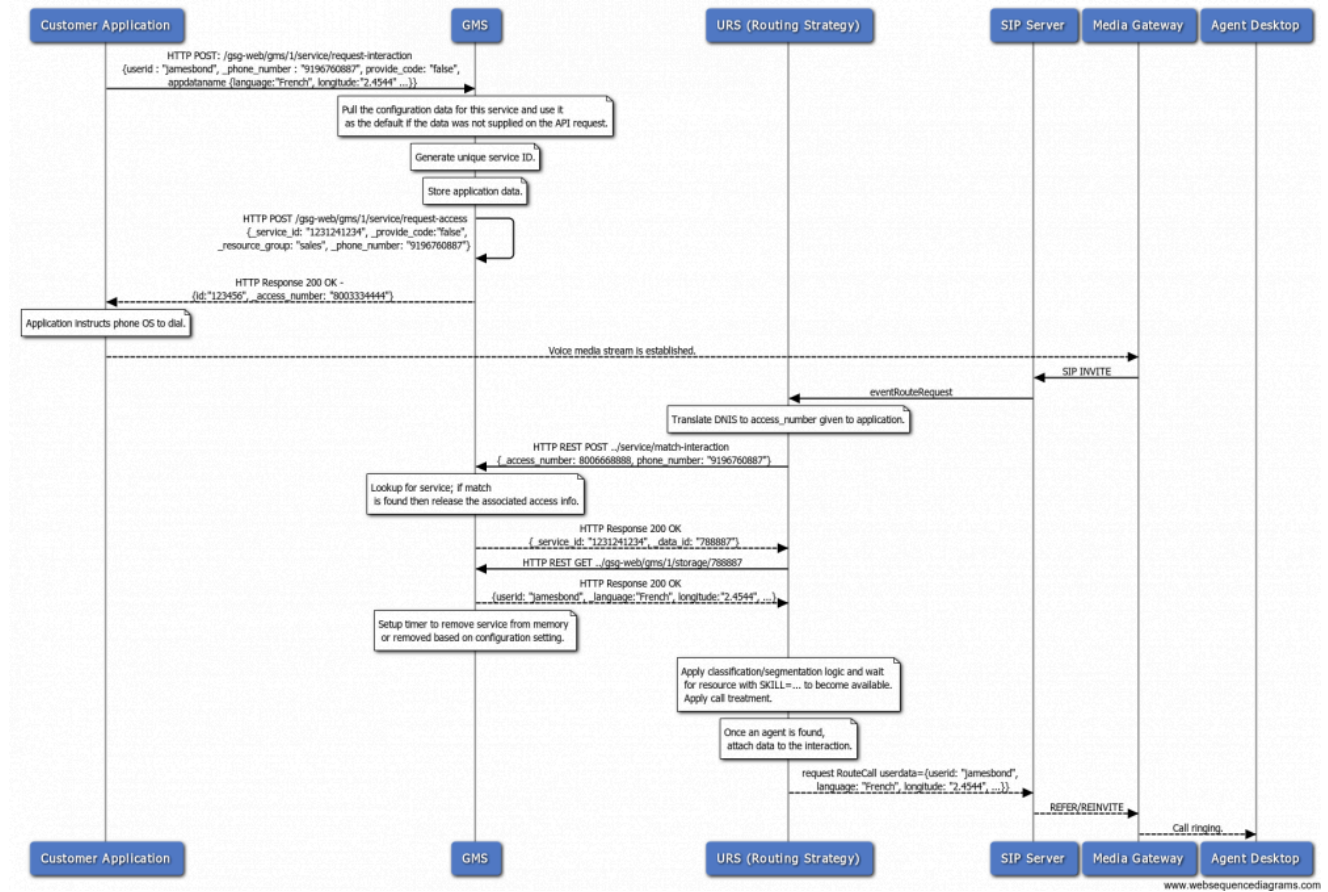
# Access Number Allocation Call Flows

No Locking

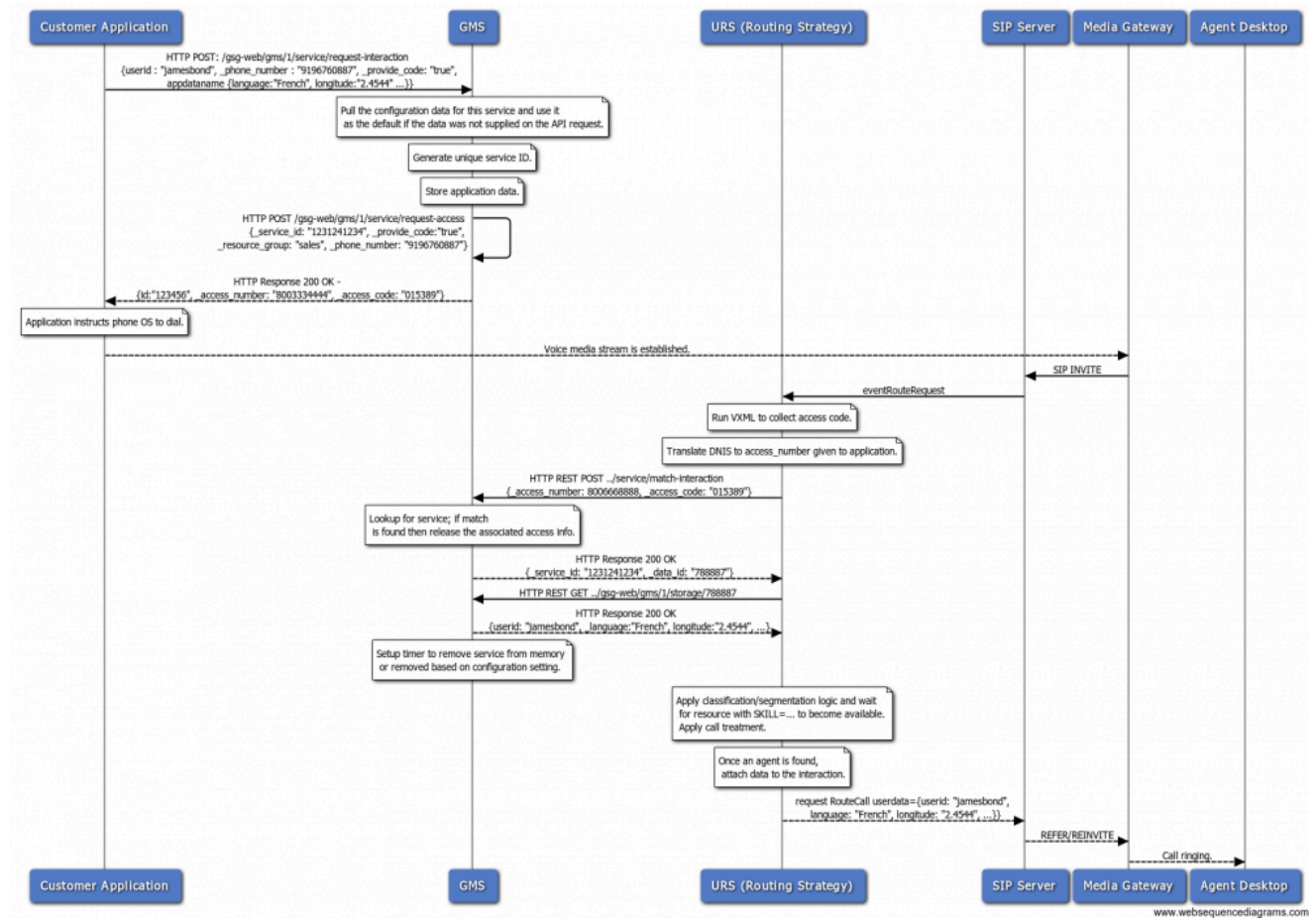
DNIS only - no match is done here



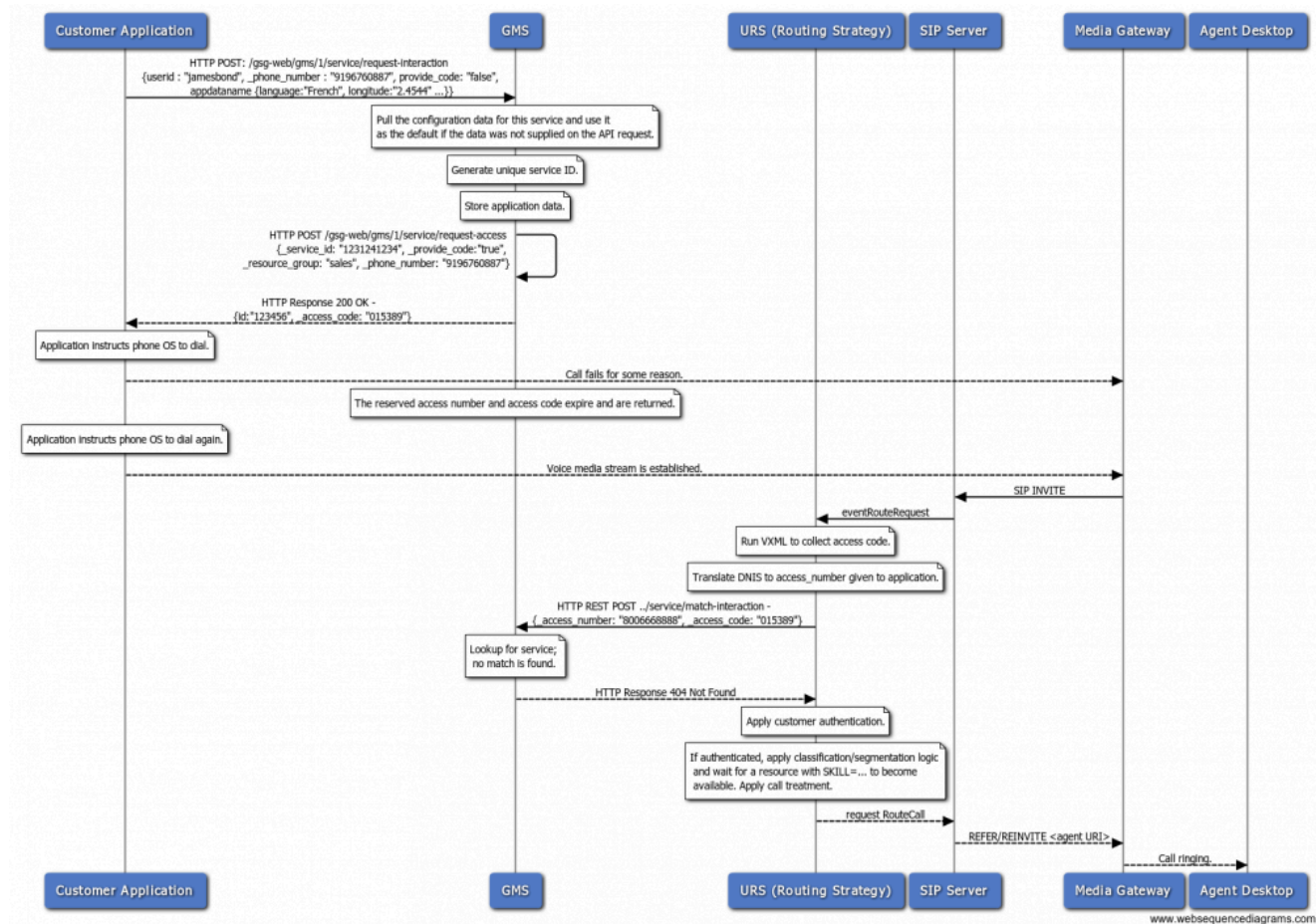
## Match DNIS + ANI



## Match DNIS + Access Code



## No Match



## Locking

The only difference between locking and non-locking call flows is the algorithm that determines how access numbers are handed out. In this case, a given access number is only assigned to a single service which allows for a more reliable match.