



This PDF is generated from authoritative online content, and is provided for convenience only. This PDF cannot be used for legal purposes. For authoritative understanding of what is and is not supported, always use the online content. To copy code samples, always use the online content.

# Genesys Info Mart Deployment Guide

Completing Database Preparation

4/22/2025

# Completing Database Preparation

This page describes steps you must take to complete deployment of the Info Mart database after it has been initialized.

## Contents

- [1 Completing Database Preparation](#)
  - [1.1 Preparing the Info Mart Database for 3rd Party Media](#)
  - [1.2 Creating Custom Calendars](#)
  - [1.3 Creating Read-Only Tenant Views](#)

### Preparing the Info Mart Database for 3rd Party Media

The Genesys Info Mart transformation job processes online and offline interactions differently. (For definitions of online and offline as used in Genesys Info Mart, see [Online and Offline Interactions](#).) The `IS_ONLINE` field in the `MEDIA_TYPE` dimension table identifies whether a particular media type will be associated with online interactions or with offline interactions.

Genesys Info Mart will dynamically add to the `MEDIA_TYPE` table any unknown media types that it encounters during transformation, but it identifies them as media types for offline interactions (`IS_ONLINE=0`, by default). Genesys recommends specifying new online media types in advance, to ensure that they are represented correctly in interaction data from the start.

#### Tip

It is only new *online* media types that Genesys recommends that you add manually in advance, because *offline* media types that are added dynamically by Genesys Info Mart will be identified correctly as offline from the start.

The following procedure describes how to set up the Info Mart database to handle online 3rd Party Media interactions. You can perform this procedure at any time after the Info Mart database schema has been initialized.

### Procedure: Setting up media types for online interactions

**Purpose:** To prepopulate the `MEDIA_TYPE` dimension table with media types that Genesys Info Mart might encounter in 3rd Party Media interactions, so that they will be processed as online interactions.

#### Prerequisites

- The Info Mart database has been initialized (see [step 1 in Overview: Completing the Deployment](#)).
- You have the required permissions to alter the Info Mart database.

#### Steps

1. Log in to the Info Mart database as any user with `INSERT` and `ALTER` permissions.
2. Check the current contents of the `MEDIA_TYPE` table to identify the last `MEDIA_TYPE_KEY` value.

Media types for 3rd Party Media interactions have values of 1001 or higher.

3. Execute an SQL INSERT command to add the desired media types to the MEDIA\_TYPE table. For each new media type, specify values for the required fields.

- MEDIA\_TYPE\_KEY — The unique primary key. Using the information from [step 2](#), specify the next available value greater than 1000 (in other words, 1001 or higher).
- MEDIA\_NAME — Any name, up to 64 characters, that you want to use to identify the media type.
- MEDIA\_NAME\_CODE — The name of the media type that Genesys Info Mart uses internally. The code name can be up to 32 characters, must be unique, and must exactly match the name of the corresponding Media Type Business Attribute, including case.
- IS\_ONLINE — The online/offline flag. For online media types, specify a value of 1.
- CREATE\_AUDIT\_KEY — The lineage for data creation. Specify a value of -1, which indicates that the row was not inserted by Genesys Info Mart.
- UPDATE\_AUDIT\_KEY — The lineage for data update. Specify a value of -1, which indicates that the row was not updated by Genesys Info Mart.

The following Figure shows the contents of a sample MEDIA\_TYPE table in which:

MEDIA_TYPE_KEY	MEDIA_NAME	MEDIA_NAME_CODE	IS_ONLINE	CREATE_AUDIT_KEY	UPDATE_AUDIT_KEY
0	None	NONE	1	2	0
1	Voice	VOICE	1	2	0
2	Email	EMAIL	0	2	0
3	Chat	CHAT	1	2	0
1001	SampleOnlineMedia1	SampleOnlineMedia1	1	-1	-1
1002	SampleOfflineMedia	SampleOfflineMedia	0	5	0
→ 1003	SampleOnlineMedia2	SampleOnlineMedia2	1	5	-1

Sample MEDIA\_TYPE Table View Large

- None, Voice, Email, and Chat are the default media type dimensions.
- SampleOnlineMedia1 is an online 3rd Party Media media type that was added manually in advance.
- SampleOfflineMedia is an offline 3rd Party Media media type that was added dynamically by Genesys Info Mart during runtime.
- SampleOnlineMedia2 is an online 3rd Party Media media type that was not added in advance (for example, because the user forgot or because it is new to the deployment). The media type was added dynamically by Genesys Info Mart (as an offline media type) during runtime, and then the IS\_ONLINE field in the record was manually altered to indicate that it is an online media type.

For more information about the required data types and the meaning of the fields, see the [Genesys Info Mart Physical Data Model](#) (formerly called *Reference Manual*) for your RDBMS.

If you are executing this procedure during runtime and you encounter a constraint violation, go to [step 4](#). Otherwise, go to [step 5](#).

4. Constraint violations, if they occur, are most likely to occur if you are manually adding media types while the transformation job is running.

You might encounter a constraint violation when you execute the INSERT command if:

- The media type has already been added. Check the contents of the MEDIA\_TYPE table to identify if a record with that MEDIA\_NAME\_CODE already exists, and verify the value of the IS\_ONLINE flag. If the record exists because Genesys Info Mart added it dynamically during transformation, execute an ALTER TABLE command to change the value of the IS\_ONLINE flag to 1.
- Genesys Info Mart dynamically added a media type to the MEDIA\_TYPE table and used a MEDIA\_TYPE\_KEY value that you were planning to use. Repeat [step 2](#) and [step 3](#) to add the desired media type with a different MEDIA\_TYPE\_KEY value.

Genesys Info Mart might encounter a constraint violation if the transformation job was coincidentally trying to add an unknown media type at the exact time that you were manually adding it or using the same MEDIA\_NAME\_KEY to add another media type, and your insert took effect first. In this case, no action is required.

- The transformation job will complete unsuccessfully.
- In the next ETL cycle, the transformation job will take the appropriate action — either recognizing the media type that you inserted, or else using a different MEDIA\_TYPE\_KEY to insert the new media type.

5. Commit the change to the database.

## Creating Custom Calendars

To enable you to customize the calendars that you use in your reporting, Genesys Info Mart supports multiple custom calendar dimensions. The following procedure describes the steps to create a custom calendar.

### Procedure: Configuring custom calendars

**Purpose:** To modify the Genesys Info Mart Application object and Info Mart database schema to provide additional calendar dimensions for use in reports.

#### Prerequisites

- You have the required permissions to access and modify the Genesys Info Mart Application object, if required (see [step 1](#)).
- The database access account that you use to create the Info Mart database schema is available and has the required privileges (see [Database Privileges](#)). If you prepared a [database worksheet](#), refer to it to determine the ID to use.

- If your deployment does not always use the latest Oracle Java SE platform JDK or JRE update release (which is Oracle's preferred means of delivering timezone data updates), you have run the [Java Timezone Updater Tool](#) to update your JRE time zone data.

### Steps

1. Configure the Genesys Info Mart application to support the required custom calendars, if you did not configure the required options before installing the application.
  1. On the **Options** tab of the Genesys Info Mart Application object, create a new section that has a section name that starts with the prefix **date-time-** (for example, **[date-time-emea]**).
  2. Create new options that have the same names as the options in the default **[date-time]** section, and configure the options as required for your reporting purposes.  
For more information about the **[date-time]** options, see [date-time Section](#) in the *Genesys Info Mart Configuration Options Reference*.
2. Prepare the script to create the custom dimension tables in the Info Mart database schema.
  1. Locate the script that you ran to create the Info Mart database schema, as described in [Preparing the Info Mart Database](#). (The script is **make\_gim.sql**, **make\_gim\_partitioned.sql**, **make\_gim\_multilang.sql**, or **make\_gim\_multilang\_partitioned.sql** in the **sql\_scripts** folder in your Genesys Info Mart installation package.)
  2. Copy the SQL statements that create the default DATE\_TIME table, and use them as the basis for a custom script to create additional calendar table(s), with the same structure and column names as the default DATE\_TIME table.  
The table name must match the value of the **date-time-table-name** option that you specified in the custom [date-time-*\**] configuration section (see [step 1](#)).
3. Log in to the Info Mart database by using the Info Mart owner ID.
4. Execute the script that you created in [step 2](#).

### Next Steps

- Verify that the custom dimension tables have been populated.  
If you configure the custom calendars before you start Genesys Info Mart for the first time, **Job\_InitializeGIM** will populate the custom calendar dimension tables. If you configure the custom calendars after **Job\_InitializeGIM** has run, the custom calendar dimension tables will be populated at the next run of **Job\_MaintainGIM**.
- If you have not already done so, create read-only views for your reporting application to query.  
See [Creating Read-Only Tenant Views](#).

## Creating Read-Only Tenant Views

Read-only views allow you to control end-user access to Info Mart data.

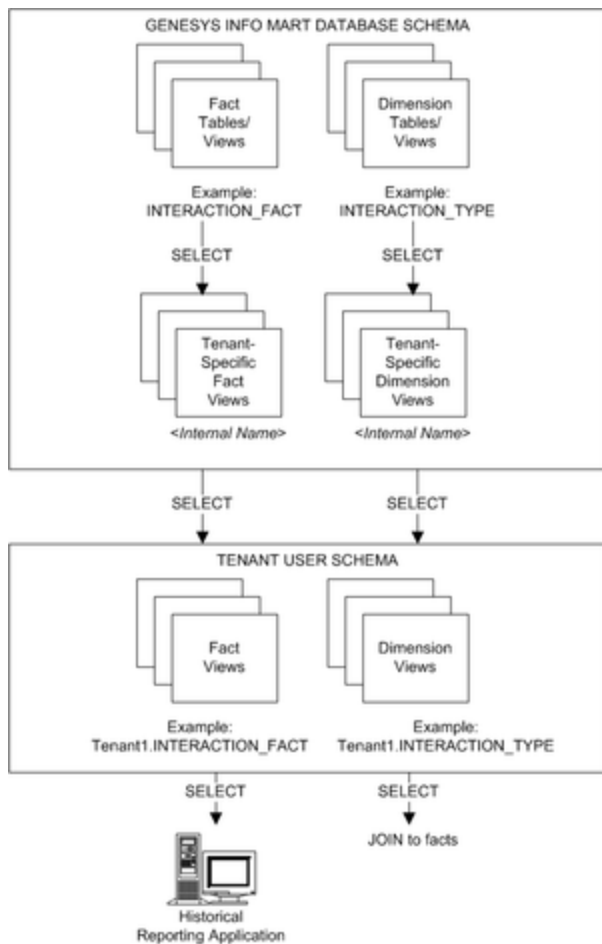
### Tip

Creating read-only, tenant-specific views is strictly required only for multi-tenant deployments. However, even in single-tenant deployments, Genesys recommends that you consider setting up a tenant-specific, read-only view for security reasons: A read-only view helps protect the data, because your queries do not work directly on the database tables.

## About Read-Only Views

Each Tenant User schema has a view on a single DATE\_TIME table, so each schema supports a single time zone. Genesys Info Mart supports creating table views for more than one tenant in the same Tenant User schema. This functionality simplifies deployment of the reporting solution.

The following Figure illustrates how the tenant-specific, read-only Genesys Info Mart Views function in a Genesys Info Mart deployment. The diagram shows a Tenant User schema that contains table views for only one tenant.



Multi-Tenant Filtered Views or Single-Tenant Read-Only View View Large

### Reports in multiple time zones

To provide reports in multiple time zones, the downstream report developer must use a separate Tenant User schema for each time zone. However, the Tenant Admin does not need to create a separate Tenant User schema for each combination of time zone and tenant. Instead, the Tenant Admin can include all tenants, or a group of tenants, in a single schema per time zone.

In addition to creating a separate Tenant User schema for each time zone, you must configure your aggregation software to identify the different time-zone calendars and enable tenant-specific access to the applicable Tenant User schema for a particular time zone. For deployments that use GCXI, see [Configuring aggregation across more than one time zone](#) in the *Reporting and Analytics Aggregates User's Guide* for more information.

### Creating the Views

The Genesys Info Mart installation package includes a script, **make\_gim\_view\_for\_tenant.sql**, that you run in order to create tenant-specific, read-only views on the Genesys Info Mart tables. The following procedures describe the modifications you must make to the



**make\_gim\_view\_for\_tenant.sql** script for your RDBMS, in order to create the tenant views in your deployment.

## Microsoft SQL Server

### Creating Read-Only Views — Microsoft SQL Server

Repeat the following procedure for each tenant in your Genesys Info Mart configuration.

The script that creates each tenant view first drops the view, so the script can be rerun if necessary (for example, if you add new custom user-data tables to the Info Mart database schema).

#### Procedure: Creating Genesys Info Mart tenant views for Microsoft SQL Server

**Purpose:** In a tenant user schema, to create tenant-specific, read-only views on database objects (database tables and views) that are in the Info Mart schema in Microsoft SQL Server.

##### Prerequisites

- You have identified database connection parameters for each database. Refer to the [database worksheet](#) you prepared for Microsoft SQL Server.
- You have obtained the TENANT\_KEY, which Genesys Info Mart uses to identify the tenant, in one of the following ways:
  - You have obtained the database identifier that Configuration Server assigned to the tenant (Tenant DBID). The TENANT\_KEY matches the Tenant DBID.
  - You have successfully run the first ETL cycle, so that the TENANT dimension has been populated, and then you queried the TENANT dimension table in the Info Mart view that is named TENANT, to obtain the TENANT\_KEY. The TENANT view was created by the script you ran to create the Info Mart database schema (**make\_gim.sql**, **make\_gim\_partitioned.sql**, **make\_gim\_multilang.sql**, or **make\_gim\_multilang\_partitioned.sql**).
- The Tenant User user accounts are available. Refer to the [database worksheet](#) you prepared for Microsoft SQL Server to determine the IDs to use.
- You have located a copy of the **make\_gim\_view\_for\_tenant.sql** script, which is available in the **sql\_scripts** folder in the installation directory or in the **sql\_scripts** folder on the Genesys Info Mart CD.

### Steps

1. Log in to the Info Mart database as the Tenant Admin database user.
2. In a text editor, modify the **make\_gim\_view\_for\_tenant.sql** script to provide the required parameters:
  - **&&1** — Replace all instances of **&&1** with the name of the Tenant User schema.
  - **&&2** — Replace all instances of **&&2** with the name of the Info Mart schema.
  - **&&3** — Replace all instances of **&&3** with one of the following:
    - **all\_tenants** — To create views for all the tenants that have been configured for the deployment
    - A list of Tenant keys (for example: 101, 102, 103) — To create views for a group of tenants
    - The Tenant key — To create views for a single tenant
  - **&&4** — Replace all instances of **&&4** with the name of the tenant user who will access the view.
3. Run the modified **make\_gim\_view\_for\_tenant.sql** script.

### Next Steps

- If you are enabling optional functionality, see the task summaries that are provided under [Enabling Specific Functionality](#).
- If you want to use the Data Export feature to export your Info Mart data to a data warehouse for the purpose of archiving or custom reporting, see the "About Data Export" page in the [Genesys Info Mart Physical Data Model](#) for your RDBMS. There you will find information about configuring and scheduling the export job, optionally creating and using export views for the export, and creating a target database consistent with the Info Mart schema. (The Data Export feature is supported for premise customers starting with release 8.5.011.22.)
- Otherwise, your Genesys Info Mart deployment process is complete.

## Oracle

### Creating Read-Only Views — Oracle

Repeat the following procedure for each tenant in your Genesys Info Mart configuration.

The script that creates each tenant view first drops the view, so the script can be rerun if necessary (for example, if you add new custom user-data tables to the Info Mart database schema).

## Procedure: Creating Genesys Info Mart tenant views for Oracle

**Purpose:** In a tenant user schema, to create tenant-specific, read-only views on database objects (database tables and views) that are in the Info Mart schema in Oracle.

### Prerequisites

- You have identified database connection parameters for each database. Refer to the [database worksheet](#) you prepared for Oracle.
- You have obtained the TENANT\_KEY, which Genesys Info Mart uses to identify the tenant, in one of the following ways:
  - You have obtained the database identifier that Configuration Server assigned to the tenant (Tenant DBID). The TENANT\_KEY matches the Tenant DBID.
  - You have successfully run the first ETL cycle, so that the TENANT dimension has been populated, and then you queried the TENANT dimension table in the Info Mart view that is named TENANT, to obtain the TENANT\_KEY. The TENANT view was created by the script you ran to create the Info Mart database schema (**make\_gim.sql**, **make\_gim\_partitioned.sql**, **make\_gim\_multilang.sql**, or **make\_gim\_multilang\_partitioned.sql**).
- The Tenant User user accounts are available. Refer to the [database worksheet](#) you prepared for Oracle to determine the IDs to use.
- You have located a copy of the **make\_gim\_view\_for\_tenant.sql** script, which is available in the **sql\_scripts** folder in the installation directory or in the **sql\_scripts** folder on the Genesys Info Mart CD.

### Steps

1. Log in to the Info Mart database as the Tenant Admin database user.
2. In a text editor, modify the **make\_gim\_view\_for\_tenant.sql** script to provide the required parameters:
  - `&&1` — Replace all instances of `&&1` with the name of the Tenant User schema.
  - `&&2` — Replace all instances of `&&2` with the name of the Info Mart schema.
  - `&&3` — Replace all instances of `&&3` with one of the following:
    - `all_tenants` — To create views for all the tenants that have been configured for the deployment
    - A list of Tenant keys (for example: 101, 102, 103) — To create views for a group of tenants
    - The Tenant key — To create views for a single tenant

### Tip

Ensure that you use upper case for the user names. For example, if the name of the Tenant User is Tenant1, replace all instances of &&1 with TENANT1.

3. Run the modified **make\_gim\_view\_for\_tenant.sql** script.

### Next Steps

- If you are enabling optional functionality, see the task summaries that are provided under [Enabling Specific Functionality](#).
- If you want to use the Data Export feature to export your Info Mart data to a data warehouse for the purpose of archiving or custom reporting, see the "About Data Export" page in the [Genesys Info Mart Physical Data Model](#) for your RDBMS. There you will find information about configuring and scheduling the export job, optionally creating and using export views for the export, and creating a target database consistent with the Info Mart schema. (The Data Export feature is supported for premise customers starting with release 8.5.011.22.)
- Otherwise, your Genesys Info Mart deployment process is complete.

## PostgreSQL

### Creating Read-Only Views — PostgreSQL

Repeat the following procedure for each tenant in your Genesys Info Mart configuration.

The script that creates each tenant view first drops the view, so the script can be rerun if necessary (for example, if you add new custom user-data tables to the Info Mart database schema).

#### Procedure: Creating Genesys Info Mart tenant views for PostgreSQL

**Purpose:** In a tenant user schema, to create tenant-specific, read-only views on database objects (database tables and views) that are in the Info Mart schema in PostgreSQL.

### Prerequisites

- You have identified database connection parameters for each database. Refer to the [database worksheet](#) you prepared for PostgreSQL.
- You have obtained the TENANT\_KEY, which Genesys Info Mart uses to identify the tenant, in one of the following ways:
  - You have obtained the database identifier that Configuration Server assigned to the tenant (Tenant DBID). The TENANT\_KEY matches the Tenant DBID.
  - You have successfully run the first ETL cycle, so that the TENANT dimension has been populated, and then you queried the TENANT dimension table in the Info Mart view that is named TENANT, to obtain the TENANT\_KEY. The TENANT view was created by the script you ran to create the Info Mart database schema (**make\_gim.sql**, **make\_gim\_partitioned.sql**, **make\_gim\_multilang.sql**, or **make\_gim\_multilang\_partitioned.sql**).
- The Tenant User user accounts are available. Refer to the [database worksheet](#) you prepared for PostgreSQL to determine the IDs to use. In releases earlier than 8.5.009, the name of the Tenant User schema must be the same as the name of the corresponding tenant user.
- You have located a copy of the **make\_gim\_view\_for\_tenant.sql** script, which is available in the **sql\_scripts** folder in the installation directory or in the **sql\_scripts** folder on the Genesys Info Mart CD.

### Steps

1. Log in to the Info Mart database as the Tenant Admin database user.
2. In a text editor, modify the **make\_gim\_view\_for\_tenant.sql** script to provide the required parameters:
  - &&1 — Replace all instances of &&1 with the name of the Tenant User schema.
  - &&2 — Replace all instances of &&2 with the name of the Info Mart schema.
  - &&3 — Replace all instances of &&3 with one of the following:
    - all\_tenants — To create views for all the tenants that have been configured for the deployment
    - A list of Tenant keys (for example: 101, 102, 103) — To create views for a group of tenants
    - The Tenant key — To create views for a single tenant

Starting with release 8.5.009, you must also provide the following parameters:

  - &&4 — Replace all instances of &&4 with the name of the Tenant user.
  - &&5 — Replace all instances of &&5 with the name of the Info Mart database user.
3. Run the modified **make\_gim\_view\_for\_tenant.sql** script.

### Next Steps

- If you are enabling optional functionality, see the task summaries that are provided under [Enabling Specific Functionality](#).
- If you want to use the Data Export feature to export your Info Mart data to a data warehouse for the purpose of archiving or custom reporting, see the "About Data Export" page in the [Genesys Info Mart Physical Data Model](#) for your RDBMS. There you will find information about configuring and scheduling the export job, optionally creating and using export views for the export, and creating a target database consistent with the Info Mart schema. (The Data Export feature is supported for premise customers starting with release 8.5.011.22.)
- Otherwise, your Genesys Info Mart deployment process is complete.