



This PDF is generated from authoritative online content, and is provided for convenience only. This PDF cannot be used for legal purposes. For authoritative understanding of what is and is not supported, always use the online content. To copy code samples, always use the online content.

Genesys Knowledge Management User Guide

Reading and Understanding the Ratings

Contents

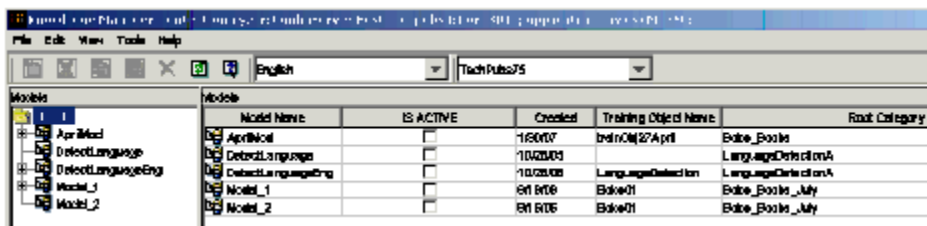
- 1 Reading and Understanding the Ratings
 - 1.1 Models Tab: Root Node Selected
 - 1.2 Models Tab: Model Node Selected
 - 1.3 Models Tab: Ratings Nodes Displayed

Reading and Understanding the Ratings

This topic describes part of the functionality of **Genesys Content Analyzer**.

The Models tab displays a browserlike tree structure on its left-hand pane. You can use the structure as follows:

- Select the root Models node to display a list of summary information about all models, as shown in "Models Tab: Root Node Selected." The IS ACTIVE column consists of check boxes; select one check box to select the model that will be active in classification.

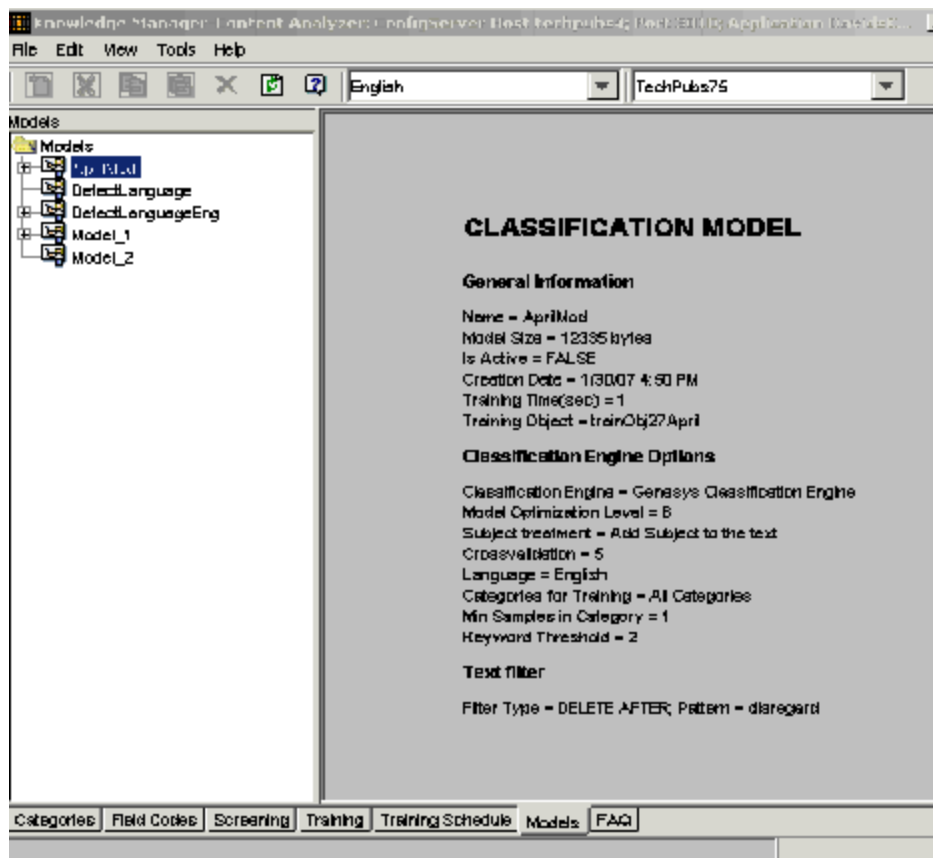


The screenshot shows the Genesys Content Analyzer interface. On the left is a tree view under the 'Models' tab, with nodes for '1', 'DetectModel', 'DetectLanguage', 'DetectLanguageEng', 'Model_1', and 'Model_2'. The '1' node is selected. On the right is a table with the following data:

Model Name	IS ACTIVE	Created	Training Object Name	Root Category
165007	<input type="checkbox"/>	165007	trainOM127Apr1	Books_Books
1042003	<input type="checkbox"/>	1042003	LanguageDetection	LanguageDetectionA
1042003	<input type="checkbox"/>	1042003	LanguageDetection	LanguageDetectionA
641 R106	<input type="checkbox"/>	641 R106	Books01	Books_Books_July
641 R106	<input type="checkbox"/>	641 R106	Books01	Books_Books_July

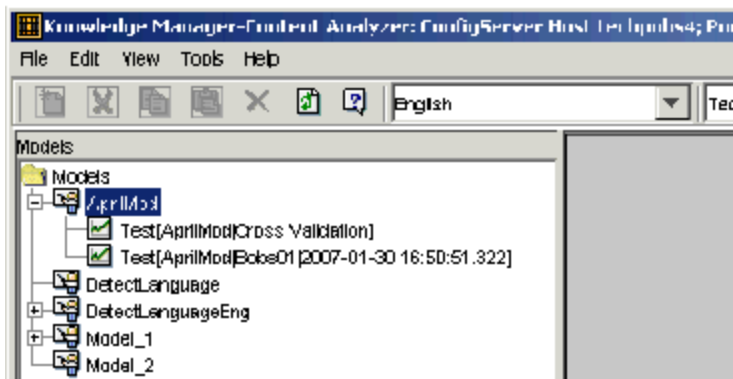
Models Tab: Root Node Selected

- Select a model node to display detailed information about the model, as shown in "Models Tab: Model Node Selected."



Models Tab: Model Node Selected

- If a model has been tested ([Testing Models](#)), its node can expand to display ratings nodes, as shown in "Models Tab: Ratings Nodes Displayed."



Models Tab: Ratings Nodes Displayed

The ratings node label has the form Model
<modelname>[<ratingsource>], where <ratingsource> is either
'CrossValidation or on<testObjectName> Testing Object/
Time=<date time>. For example, in **Models Tab: Ratings Nodes Displayed**,
the Model New04 has two sets of ratings. One is from cross-validation
applied during generation of the model, and the other is from testing the
model on the training object Bobs01.

- Select a model's ratings node to display its ratings on four subtabs, as described in the sections **Average Results**, **Category Confusion**, **Results by Category**, and **Correct in Top N**.