



This PDF is generated from authoritative online content, and is provided for convenience only. This PDF cannot be used for legal purposes. For authoritative understanding of what is and is not supported, always use the online content. To copy code samples, always use the online content.

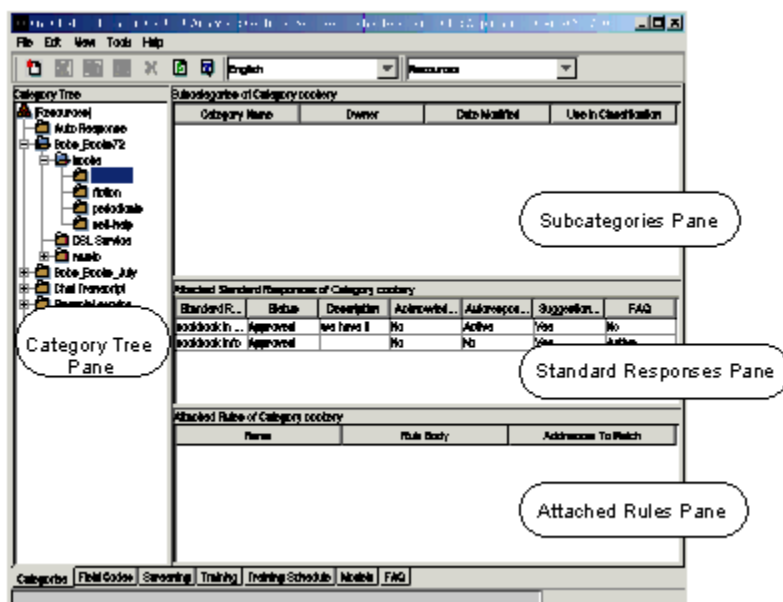
Genesys Knowledge Management User Guide

Knowledge Management User Interface

5/9/2025

Knowledge Management User Interface

The Knowledge Manager user interface is a window with three (basic Knowledge Manager) or seven (Genesys Content Analyzer) tabs. The figure "Knowledge Manager Window" shows the interface with seven tabs. It also shows the four panes Category Tree, Subcategories, Standard Responses, and Attached Rules.



Knowledge Manager Window

Important

All Knowledge Manager screenshots in this guide show the Genesys Content Analyzer version. This differs from the version without Genesys Content Analyzer, even on tabs that are common to both. For example, without Genesys Content Analyzer, there is no Tools menu.

The table "Knowledge Manager Tabs" briefly describes each tab and what it does. Note that the first three tabs are relevant to all users of Knowledge Manager, whereas the last four tabs are relevant only to users of Genesys Content Analyzer. For details see [eServices 8.1 Knowledge Manager Help](#).

Knowledge Manager Tabs

Relevance	Tab	Description
General	Categories	Displays and gives access to category trees and the standard responses and screening rules associated with categories. Provides access to the Standard Response Editor.
	Field Codes	Displays the set of field codes and provides access to the Field Code Editor
	Screening	Displays the set of screening rules and provides access to the Screening Rules Editor
Genesys Content Analyzer only	Training	Displays the set of training objects and provides access to the Mail Editor
	Training Schedule	Displays the start time, status, and other information about training objects
	Models	Displays information about models
	FAQ	Displays information about FAQ objects

Important

In most Knowledge Manager windows, lists of items can be sorted by clicking on the column headings. The major exceptions are lists of test results on the Models tab. See [Testing Models](#) and [Using and Rating Models](#).