



This PDF is generated from authoritative online content, and is provided for convenience only. This PDF cannot be used for legal purposes. For authoritative understanding of what is and is not supported, always use the online content. To copy code samples, always use the online content.

Composer Deployment Guide

Installation

Installation

Contents

- **1 Installation**
 - 1.1 Composer Installation Video
 - 1.2 Getting Started After Installation
 - 1.3 Installing Composer as an Eclipse Plugin
 - 1.4 Support for OpenJDK
 - 1.5 Update Site
 - 1.6 Operating Systems Supported
 - 1.7 Application Server Requirements
 - 1.8 Web Application Server Configuration
 - 1.9 Database Support
 - 1.10 Speech Engines Supported
 - 1.11 Web Browsers Supported
 - 1.12 Third Party Software Requirements
 - 1.13 Genesys Software Prerequisites
 - 1.14 Minimum System Requirements
 - 1.15 Minimum Screen Resolution
 - 1.16 Before Installing
 - 1.17 Installing Composer on Windows
 - 1.18 Prerequisites
 - 1.19 Installation Steps
 - 1.20 Manual Plugin Installation
 - 1.21 Windows 7 and Server 2008 32 Bit
 - 1.22 Viewing a Sample Application

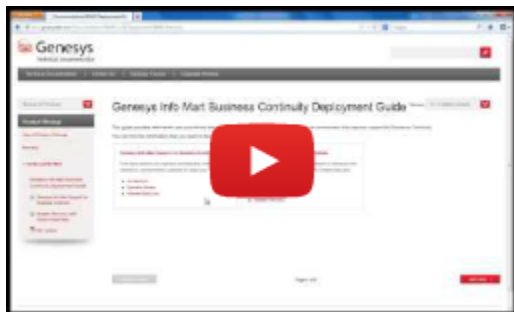
This section describes the Composer software requirements, and installation and launching procedures.

Composer Installation Video

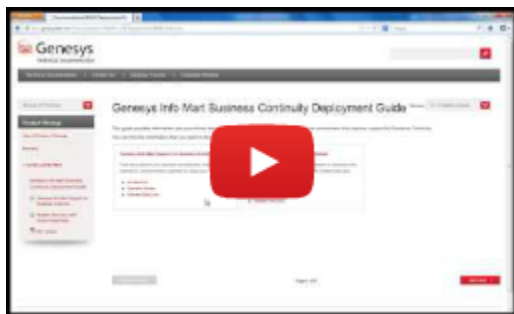
Below is a video tutorial on installing Composer 8.1.4 in Windows in an Eclipse environment. Depending on the flavor of Eclipse you have installed, your interface may appear slightly different than that shown in the video. The installation **Available Software** dialog box for release 8.1.430.06 adds the option for **Composer Language Locales** (not shown in this video). For more information, see [Locales](#).

Important

Silent installation of Composer is not supported. Download the correct Eclipse for your computer's processor, i.e., download 64-bit Eclipse download or 32-bit Eclipse based on the target computer. Java Development Kit and Eclipse must match, i.e., both 32-bit or both 64-bit.



Getting Started After Installation



Installing Composer as an Eclipse Plugin

Composer 8.1.3/8.1.4/8.1.5+ is installed as plugins into an existing Eclipse environment as well as Oracle Java Development Kit 1.7.0_0 or higher.

Important

- **Composer uses Eclipse Java Development Tools (JDT) and Web Development Tools (WDT) in addition to the Xpand, GEF, EMF, and GMF diagramming frameworks.**
- **Genesys strongly recommends having an Eclipse IDE exclusively for Composer.**
- **Genesys strongly recommends the *Eclipse IDE for Java EE Developers* packages.**
- **Composer downloads the required dependent packages during installation. Other than those packages that are automatically installed by Composer, DO NOT install additional Eclipse packages or frameworks on Composer Eclipse.**

The supported Eclipse versions depend on the Composer version, as shown below:

- Starting with Composer version 8.1.600.07, only Eclipse 2024-09 is supported.
- For Composer version 8.1.561.35, only Eclipse Photon is supported.
- Eclipse Photon (4.8) - starting with Composer version 8.1.560.15.
- Eclipse Neon (4.6) and Oxygen (4.7) - starting with Composer version 8.1.530.17.
- Eclipse Luna (4.4.2) and Mars (4.5) - starting with Composer version 8.1.410.14.

Important

Before installing the Composer plugins into the Eclipse environment, you must install the GMF Tooling plugin. The GMF tooling is no longer available from Eclipse since September 2023.

Follow these instructions to install the GMF tooling:

1. Install OpenJDK 1.8.

Important

- Beginning with Composer 8.1.600.07, install OpenJDK 17.
- Beginning with Composer 8.1.600.08, install OpenJDK 21.

1. Configure the JAVA_HOME and PATH environment variables to point to this installation.
2. Run Eclipse Photon and install the GMF runtime [using this Eclipse site](#).

Important

Beginning with Composer 8.1.600.07, run Eclipse 2024-09, install the GMF runtime [using this Eclipse site](#), and install the XPAND plugin [using this Eclipse site](#).

3. Restart Eclipse.
4. Manually deploy the gmf-tooling plugin by copying the **jar** `org.eclipse.gmf.tooling.runtime_3.2.0.201409171321.jar` from older setups to **Eclipse/plugins**.

Important

Beginning with Composer version 8.1.561.35, the step to install the GMF tooling is not required.

5. Restart Eclipse.
6. Install Composer to its default location
7. Ignore the *Plugin component will not be installed...* warning.
8. Add Composer plugins to Eclipse.
9. In Eclipse, configure Composer update site (.zip file).
10. Install all Composer plugins.
11. Trust all certificates if this popup appears.
12. Restart Eclipse.

The Composer installation should work and the bundled Tomcat should also be installed and functional.

Note: Oracle Java 8 is required for Eclipse Neon (4.6) and Oxygen (4.7). Eclipse Luna (4.4.2) and Mars (4.5) support both Oracle Java 7 and 8. However, Genesys recommends using Oracle Java 8.
Note: Beginning with Composer 8.1.600.07, Open JDK 17 is required for Eclipse 2024-09 (4.33). Beginning with Composer 8.1.600.08, OpenJDK 21 is required.

Important

- Beginning with Composer version 8.1.530.17, Eclipse versions Juno and Kepler are no longer supported.
- Beginning with Composer version 8.1.560.15, Eclipse versions Luna (4.4.2) and Mars (4.5) are no longer supported.
- Beginning with Composer version 8.1.561.35, only Eclipse version Photon (4.8) is supported.
- Beginning with Composer version 8.1.600.07, only Eclipse version 2024-09 (4.33) is supported.

Note: Previous to 8.1.410.14, Indigo (3.7+) was supported for Composer 8.1.3 and some 8.1.4 versions. Not supported for Composer 8.1.410.14 and later. See [Upgrading Eclipse](#).

Previous to 8.1.3, Composer installation consisted of:

1. The “basic” Eclipse application download.
2. Eclipse plugin dependencies.
3. The Genesys Composer plugins.
4. A bundled **Tomcat** for testing applications.

Starting with 8.1.3, the Composer installer supplies (3) and (4). The “basic” Eclipse (1) is up to you to download.

Important

Composer supports only Oracle JRE. All references to Java, JDK, and JRE in Composer documentation pertain to Oracle JRE.

Support for OpenJDK

- Starting with release 8.1.600.08, Composer supports only Open JDK 21 for both designtime and runtime.
- Starting with release 8.1.600.07, Composer supports only Open JDK 17 for both designtime and runtime.
- Starting with release 8.1.550.08, Composer supports OpenJDK 8 and OpenJDK 11.

Important

- Support for OpenJDK 11 is included for runtime deployment and execution of WAR files only.
- Starting with release 8.1.561.35, the WebService block supports OpenJDK 11. Previously, the WebService block did not support OpenJDK 11.

OpenJDK 8 is supported for both design time and runtime execution of Eclipse IDE and WAR file deployments.

Update Site

The Composer plugins are distributed as an *update site*, which is contained in *com.genesyslab.composer.updateSite.zip* . In Eclipse terminology, “update site” refers to a location from which Eclipse can pull plugins. The installer gives the option to pull the plugins from the update site zip file and install them into an existing Eclipse (1) environment.

If that option is enabled, then the Installer runs a script that automatically finds and downloads the plugin dependencies (2) and installs them along with the Composer plugins (3) and the bundled Tomcat (4). This is optional because you may not have downloaded a basic Eclipse yet, in which case you can install (2) and (3) later from within Eclipse using **Help > Install New Software** .

Important

Eclipse is not required first if you only want to extract the update site without installing Composer plugins into the Eclipse. This is possible, for example, if you just want the update site zip file to copy to multiple machines where the actual Composer installation will take place.

User-Facing Changes as a Result of Plug-in Installation

Change	Before 8.1.3	813+ Behavior
Change in file encoding used by Eclipse-based text editors to save files.	Composer based editors such as the VoiceXML Editor and SCXML Editor uses UTF-8 Encoding. Other Eclipse-based generic test editors uses default CP1252 encoding.	All the files and editors within the IDE will use UTF-8 encoding if the General > Workspace > Text File Encoding preference is default while launching the IDE. Otherwise, user-specified encoding takes precedence. However, Composer recommends using UTF-8

Change	Before 8.1.3	813+ Behavior
The Composer splash screen is not displayed anymore.	Composer branded splash screen was displayed showing the Genesys logo, version, and so on.	encoding. Eclipse's default screen is displayed. No Genesys specific information shown.
Help > About	The Help About dialog is integrated into Eclipse and displays as part of the Eclipse workbench with information pulled out of the product definition.	The About Composer dialog exists is now a custom implementation. There is now a Help > About Composer in addition to a Help >> About.

Also see: [Plugin Installation](#).

Operating Systems Supported

For information on supported operating systems, see the [Composer](#) section in the [Genesys Supported Operating Environment Reference Guide](#). Also see the note on Windows 7 and Windows 8 Server under [Installing Composer on Windows](#).

Application Server Requirements

Genesys does not certify Composer with specific Web application server vendors and versions. This applies to developing both:

- VXML applications and related resources that will be executed on the Genesys Voice platform and
- SCXML applications and related resources that will be executed on the Orchestration platform.

Java Composer Projects can be deployed to any Web application server that meets the following minimum pre-requisites:

- Application server should be J2EE 5 compliant.
- Support for the JSP 2.1/Servlet 2.5 specification.
- Oracle Java 7 or 8.

When considering a potential Web application server to use for a production deployment of Composer-generated applications, please refer to the vendor's documentation to ensure that the software meets these pre-requisites. In addition, you should run a few basic tests using a Composer sample application, to ensure that the application behaves as expected. For more details, please refer to the section [Suggested Test Plan](#).

For developing SCXML applications and related resources that will be executed on the Orchestration Server platform, only specific Web application servers are supported. Please refer to the [Orchestration Server 8.1 Deployment Guide](#) for more information.

- Note: For more detailed information on deploying Composer applications to an application server, see [Deploying Composer Applications](#).

Bundled Tomcat

Composer installs an embedded Tomcat web server for your use (code generation and testing). Genesys does *not* recommend that you use this bundled Tomcat web server for deploying and running your Composer-generated applications as part of a production setup. You may use a separate instance of Tomcat as a stand-alone web server, depending upon your needs and the recommendations of your IT department. Starting with 8.1.420.14, Composer supports Tomcat 7. Composer installation adds the role for manager-gui to Tomcat configuration for callflows and workflows.

For deployment of Composer-generated applications that use .NET resources, you can use any version of Microsoft IIS that is compatible with the Windows versions on which Composer is supported.

Important

- Starting with Composer 8.1.600.08, Composer supports both Tomcat 11.0.x and 10.1.x.
- Starting with Composer 8.1.561.35, Tomcat is no longer bundled with composer. You will be prompted to provide the Tomcat installed location when running the Composer installer. Only Tomcat versions 10.1.x are supported.
- The latest release of Composer, 8.1.560.15, is now bundled with Tomcat version 9.0.36.
- Starting with release 8.1.450.20, the Tomcat version bundled with the Composer installation package is upgraded from 7.0.69 to 8.5.27.
- Tomcat bundled with Composer is of 32-bit only. As of now, there are no plans to bundle Composer with 64-bit Tomcat. If required, you can have 64-bit Tomcat installed separately and deploy Composer files with it.

Web Application Server Configuration

For Composer's server-side pages to work effectively on your Web application server, some configuration changes are required.

Tomcat

See the following sections ahead:

- [Configuring Tomcat Settings](#)
- [Configuring Proxy Settings](#)

Internet Information Services (IIS)

See the following sections ahead:

- [Internet Information Services](#)
- [Configuring IIS/.NET Preferences](#)
- [Adding MIME Types for IIS](#)
- [Proxy Settings for .NET Composer Projects](#)

Suggested Test Plan

After configuring your Web application server as described above, you should run some basic tests. Here is a suggested testing approach:

1. Create a new Project based on Project templates supplied with Composer. The New Project Creation wizard will guide you through the process and show a list of Project templates to choose from. Choose a template Project depending on the Project type and feature(s). Note: If you are using both the voice and route features, Genesys recommends that you test both features by running two tests.

Composer Feature	Not Using Databases	Using Databases
Voice	Business Logic Project	Database Project
Route	Routing Using Web Request Project	Database Query Result Access Project

2. These sample Projects may require configuration to be done, which will be documented in the workflow or callflow diagram(s) in the Project template. Projects that access databases contain a *readme.htm* file in the *doc* folder that provides instructions on how to set up the database as well as SQL scripts that may be needed to set up the required database structure and populate tables with sample data.
3. Validate the diagrams in your Project and verify there are no errors. Generate the code for these diagrams.
4. Export the Project for deployment. See the Deployment book in the Composer Help for the steps.
5. Consult the documentation for your application server on how to deploy applications on it. Some application servers may require custom steps.
6. Once deployed successfully, make a test call to invoke the application. Verify the application behaves as expected. If it does not, check the configuration and Troubleshooting book in the Composer Help for more information.

Database Support

For information on supported databases, see the [Composer](#) section in the [Genesys Supported Operating Environment Reference Guide](#).

Important

When installing SQL Server, select SQL Server authentication (Composer does not support integrated Windows authentication).

Before you can use database blocks in a .NET Composer Project for accessing an Oracle database, you need to install and configure the Oracle client on the Composer machine. The Oracle client will be required on any deployment machines as well where the application will run. As a test, after installing the client software you should be able to connect to the Oracle database from SQLPlus. Once that works, database blocks in your .NET Composer Project should also be able to connect to your Oracle database. For configuring Oracle client, please contact your Oracle database administrator. Composer 8.1 has switched to an Oracle Provider from a Microsoft Provider for .NET Composer projects.

- At design time, both Java Composer Projects and .NET Composer Projects use bundled JDBC drivers to connect to Oracle, which is why your query will work in the Query Builder in both types of Composer projects. At runtime, Composer .NET projects use OLEDB database drivers, which are installed as part of Microsoft.NET Framework. These are required on each IIS where .NET Composer Projects will be run or deployed.
- Composer Java Projects use JDBC (Java Database Connectivity) drivers, which are bundled with Composer and are automatically installed with the software.
- Java Composer Projects continue to use JDBC, while .NET Composer Projects use Microsoft's OLEDB providers from the .NET Framework.

Speech Engines Supported

Composer supports all Automatic Speech Recognition (ASR) and Text-to-Speech (TTS) engines that GVP 8.1 supports.

Important

The .WAR file generated by older versions of Composer may not be compatible with the newer versions of GVP. Genesys recommends that you upgrade to Composer versions 8.1.4 or 8.1.5 for compatibility with newer versions of GVP.

Web Browsers Supported

For information on web browser support, see the [Composer](#) section in the [Genesys Supported Operating Environment Reference Guide](#).

Third Party Software Requirements

Composer requires the following third-party software on the computer on which Composer is installed:

1. **Eclipse must already be installed in your environment.** The only exception to this is listed above in the Update Site section.
 - Download the correct Eclipse for your computer's operating system, i.e., download 64-bit Eclipse or the 32-bit Eclipse based on your computer. Installation of Eclipse consists of extracting the downloaded zip file. The recommendation is to not extract the Eclipse zip file into a Programs folder. Composer installation allows you to specify the Eclipse path.
 - If installing Eclipse Juno EE 32-bit version, you must install the Oracle modeling plug-in, which Composer requires, but is not included with the Eclipse Juno EE 32-bit download. Note that many other dependencies are downloaded during the process that adds the Composer plugins to Eclipse.

Important

As stated in the [Installing Composer as an Eclipse Plugin](#) section above, Genesys recommends using a dedicated instance of Eclipse for Composer.

2. **Oracle Java Development Kit 1.7.0_0 or higher must already be installed in your environment.**
 - Set the JAVA_HOME environmental variable to point to the JRE installation directory as described on the Oracle website. You must explicitly point to the Composer-supported version of Oracle JRE (1.7 or higher) and not use the system environment variable location. This is important if you have different versions of Java installed as the system environment variable may indicate another version, which may not be usable by the Composer version of Eclipse.
 - The above warning also applies to JDK installation. The JDK's JRE version could get lost if there are other JREs on a host. If you previously installed JDK separately (or did not enable the Public JRE option), Oracle JDK 1.7 installation by itself might require the Oracle JRE 1.7 installation to be explicitly called out. A symptom of this type of JRE confusion is Composer perspectives not being available after installation.
 - Oracle Java Development Kit and Eclipse must match, i.e., both 32-bit or both 64-bit.

Important

- Beginning with Composer 8.1.600.07, Open JDK 17 must already be installed in your environment.
- Beginning with Composer 8.1.600.08, Open JDK 21 must already be installed in your environment.

1. **Microsoft .NET Framework** 2.0 and 3.5 (both are required if you intend to work with .NET Composer Projects). Starting with Composer release 8.1.500.03, **.NET Framework** 4.7.2 is also supported.

2. **Web Service Enhancements** (WSE) 3.0 for Microsoft .NET. The WSE path must be specified in Composer's IIS/.NET preferences before Composer .NET Projects can work.

Important

Composer 8.1.x does not support silent installation.

Genesys Software Prerequisites

To obtain the full functionality of Composer 8.1, the following Genesys products/software components are required:

- Orchestration Server 8.1.4 or later for developing and running SCXML session-based applications. To work with eServices, Orchestration Server 8.1.400.27+ is required.
- Orchestration Server 8.1.400.45+ is required if you want to use the **Associate New Interaction** property for the Chat Transcript, Create Email, Create SMS, Email Forward, and Email Response blocks.
- Composer 8.1.4 and Interaction Server 8.5.1 are required for enhanced pulling of multimedia interactions. While other eServices components can be 8.1 Genesys recommends that other eServices be 8.5.0 or later.
- Genesys Voice Platform (GVP) Media Control Platform 8.1.6 or later for testing and running VXML applications.
- Genesys Configuration Server 7.5 or later for support of eServices capabilities.
- If you want to use the Context Services capability of Universal Contact Server, you will need Universal Contact Server 8.1.000.10 or later.
- If you want to use Outbound Campaigns, you will need Outbound Contact Server 8.1.100.09 or later.
- If you want to use Business Rules, you will need Genesys Rules System 8.1.0 or later for business logic, which can be customized, and then invoked by VXML and SCXML applications.

Minimum System Requirements

Genesys recommends the following:

- Pentium 4 2GHz or comparable, 2 GB RAM or higher.

Minimum Screen Resolution

The minimum resolution for the Composer user interface is 1024x768 on a standard 4:3 aspect ratio monitor. The recommended resolution is 1280x1024. Lesser resolutions, such as 800x600, are not supported.

Before Installing

Before you install the Composer plugin, make sure that:

- You have met the **third party software requirements**.
- You have an account that has administrative privileges to install Composer.
- You have installed a supported SIP phone on your desktop (required if you want to conduct test calls). This can be done before or after installing Composer.
- You have installed Microsoft .NET Framework 2.0 *and* .NET Framework 3.5, for ASP.NET support in Composer.
- You have reviewed the Composer 8.1 Release Advisory.
- You have read the important information on User Account Control(UAC) (see note under [Installing Composer on Windows](#)).
- You have reviewed the chapter on configuring a security banner in the [Genesys Security Deployment Guide](#) as well as the Security Banner Configuration section below. If configuring a security banner, decide whether you want to configure it before or after installation of Composer.
- You are not installing through a Microsoft Remote Desktop Connection. You should perform the installation locally. Genesys does not recommend installation of its components through Remote Desktop Connection.
- Composer 8.1 does not support silent installation.

Security Banner Configuration

Decide whether you want to configure a security banner.

Composer installation gives the option of configuring a security banner that displays when users connect to Configuration Server. In the case of Composer, the security banner appears in a separate window that is displayed when you connect to Configuration Server. The content of this window is defined by the system administrator, and can include such items as Terms of Use of the application or some kind of disclaimer.

While Composer supports the basic operation of specifying and displaying a security banner as described in the [Genesys Security Deployment Guide](#), be aware of the following limitations for Composer:

- The banner only displays when you connect to Configuration Server after launching Composer.
- The following options are not supported:
 - List of security banner URLs.
 - **Error URL** if banner cannot be retrieved.
 - **ShowUpTimeout** , which displays a *Loading* message if loading takes more than this timeout.
 - **NoCompleteTimeout** , which is the timeout for retrieving security banner.
 - **AckMandatory** , which controls if user must acknowledge the security banner in order to proceed.
 - Height, width and title of dialog.

- **AckMode** , which controls how often the banner is displayed. Note: A Java equivalent of unilogin library is not available.
- The security banner configuration option *Until each user chooses to turn it off once for application type* is not supported. It is handled the same as the option *Until each user chooses to turn it off* .

Under some circumstances, Composer may not try to display a banner page although the loading of a previous page in the list failed. This behavior is likely to happen if the embedded browser component returns that loading is finished (although the loading failed) before the loading timeout elapses.

Pending Operations Message

When installing or un-installing Composer in a Windows XP Professional or Windows Server 2003 Standard Edition environment, the prompt to reboot appears. After the reboot, the following message appears:

```
There are some pending operations and the system needs a reboot.
The target computer does not meet some mandatory requirements.
```

Subsequent reboots result in the same behavior and you temporarily cannot install Composer on this machine. This is a result of pending reboots from other installations. If this situation occurs, follow the procedure below.

Registry Edit for Pending Operations Message

Use the information below if you receive the above message after un-installing or installing Composer:

1. Open the Registry editor.
2. Remove the following key: **HKEY_LOCAL_MACHINE\SYSTEM\CurrentControlSet\Control\Session Manager\PendingFileRenameOperations**
3. Install Composer as described below.

Installing Composer on Windows

At a high level, the installation process for is as follows:

1. Install Eclipse.
2. Configure update site for the specific flavor of Eclipse.
3. Install JDK and select the public JRE option.
4. Shutdown Eclipse.
5. Install Composer and select the **Composer Plugins** option.

A [video](#) of the Composer installation procedure is available at the beginning of this page.

Notes:

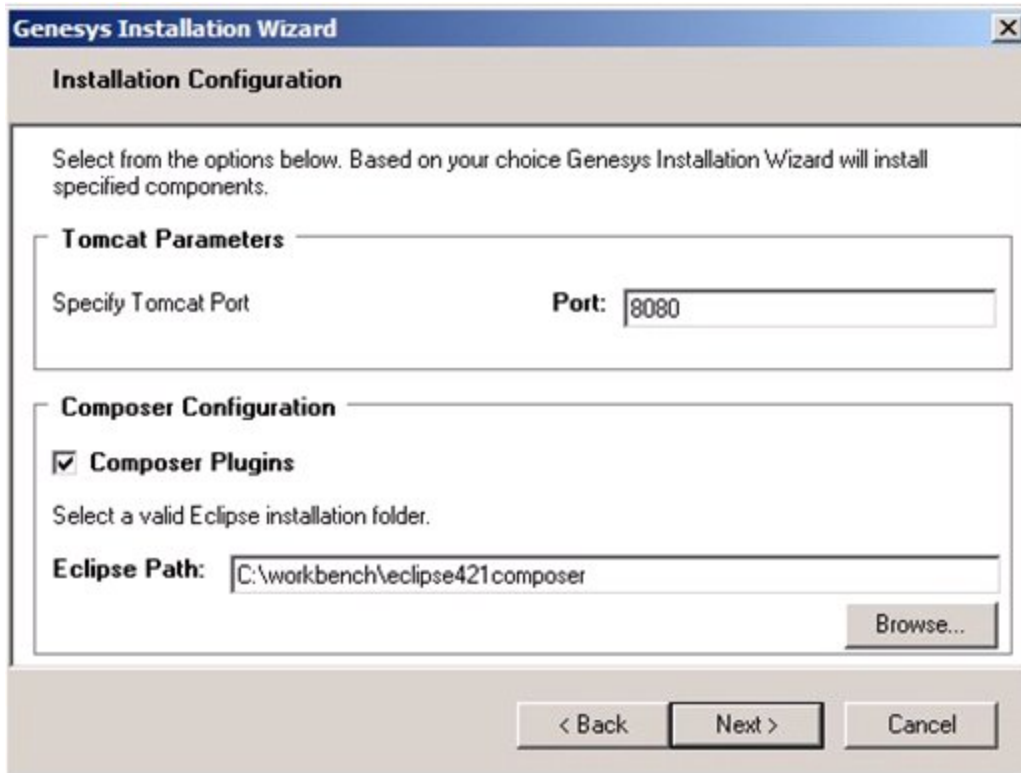
- Starting with 8.1.561.35, UAC (User Account Control) can affect the Tomcat configuration process. If UAC is disabled, installing Tomcat in a Program Files location (any location that is under UAC control) will work. However, if UAC is enabled, then Tomcat must be installed in a location that is not under UAC control, for example, C:\GCTI\Tomcat.
- On Windows 7 and Windows Server 2008, UAC (User Account Control) can affect the installation process and subsequent addition of Composer plugins to Eclipse. If UAC is disabled, installing Eclipse in a Program Files location (any location that is under UAC control) will work. However, if UAC is enabled, then Eclipse should be installed in a location that is not under UAC control, for example, C:\GCTI\Composer.
- While installing Composer 8.1.4, there is a step to download dependencies from Eclipse update sites. If your Internet connection is lost during this process, or some other error occurs, the Installer may not detect it and may incorrectly report success. Error messages will appear in the *scripts\composer-plugin-install.log* file in the Composer installation directory, (Example: C:\Program Files\GCTI\Composer\scripts\composer-plugin-install.log). Workaround: Instead of letting the Installer add Composer plugins directly to Eclipse, add Composer plugins using Eclipse's "Install New Software" feature (see Manual Plugin Installation below).

Prerequisites

See [Third Party Software Requirements](#). To uninstall/reinstall a later version, see [Uninstalling and Reinstalling](#).

Installation Steps

1. Run **setup.exe** from the Composer installation package (or where the latest version is located).
2. If you want to configure a security banner, see Security Banner Configuration section above.
3. Enter **Destination**. The destination is also where [com.genesyslab.composer.updateSite.zip](#) will be located.
4. When you reach the screen shown below:
 - Check the **Composer Plugins** checkbox and browse to the existing Eclipse location (the folder where `eclipse.exe` is located). This option automatically installs [com.genesyslab.composer.updateSite.zip](#) into your Eclipse installation.



- You also have the option to leave the **Composer Plugins** box unchecked and manually install the Composer plugin. A common case for leaving Composer Plugins unchecked would be if Eclipse is not yet installed or you do not have internet access so that dependencies cannot be downloaded during the installation process. See Manual Plugin Installation section below.

The next step assume you have checked the **Composer Plugins** box.

5. Specify the Tomcat port. For testing purposes, Composer supports automated deployment of routing applications to the bundled Tomcat server or to a local IIS server. Enter a port number to be used for Tomcat.

Important

If there is already a version of Tomcat installed, the port should be changed from 8080, which is the default, to another port (for example, 8090) to avoid port conflicts.

6. Click **Next** and **Finish** on the installation wizard. The installation may take some time because other plugin dependencies are also downloaded and installed.
7. To open Composer, open Eclipse. You may have a desktop shortcut or you may need to search for Eclipse in the directory where you extracted the Eclipse zip. If a Welcome screen appears, close it.
8. Select the Composer perspective by clicking the **Composer** button in the upper right of the screen. Or select **Window > Perspective > Open Perspective > Other**. All **perspectives** (views) available in Eclipse are listed, including those not used by Composer. Select **Composer** perspective.

Next Steps After Automatic Plugin Installation

- See [Post Installation Configuration](#).
- See [Composer Interface](#).

Manual Plugin Installation

If you left **Composer Plugins** unchecked, you can later manually install the Composer plugins if:

- You have an internet connection
- You have installed the required versions of Eclipse and Java Development in your environment.
- You have enabled the Public JRE option, which causes the JDK installer to install both JDK and JRE. Composer requires both components.

The Composer installation will have created a directory, for example, *C:\Program Files\GCTI\Composer 8.1* , in which there is a zipped update site called *com.genesyslab.composer.updateSite.zip* .

1. In a running Eclipse instance, go to **Help > Install New Software** .
2. If installing Composer in Eclipse Indigo 3.7 (not supported starting with 8.1.410.14 and later), the following extra steps are required.
 - On the Eclipse **Install' dialog box**, **click Add** .
 - Opposite **Name** , enter **GMF Tooling** .
 - Opposite Location, enter the URL for GMF Tooling: <http://download.eclipse.org/modeling/gmp/gmf-tooling/updates/releases/>
 - Click **OK**.
3. Click **Add**.
4. Type something in the *Name* field, such as *Composer* .
5. Click **Archive** .
6. Browse to the *com.genesyslab.composer.updateSite.zip* file in the *Destination* folder you previously specified in the **Destination** field. The destination is also where *com.genesyslab.composer.updateSite.zip* will be located.
7. Click **OK** .
8. Check the three Composer Features (*Common'* , **Voice**, **Route**).
9. Click **Finish** , and click through the license pages. The installation will now begin. Again, this may take some time because other plugin dependencies are downloaded and installed.
10. After installation is complete, the Installer will prompt you to restart Eclipse. **Click OK** .

Windows 7 and Server 2008 32 Bit

The procedure below also applies to 64-bit Windows 7 Ultimate in 32-bit compatibility mode.

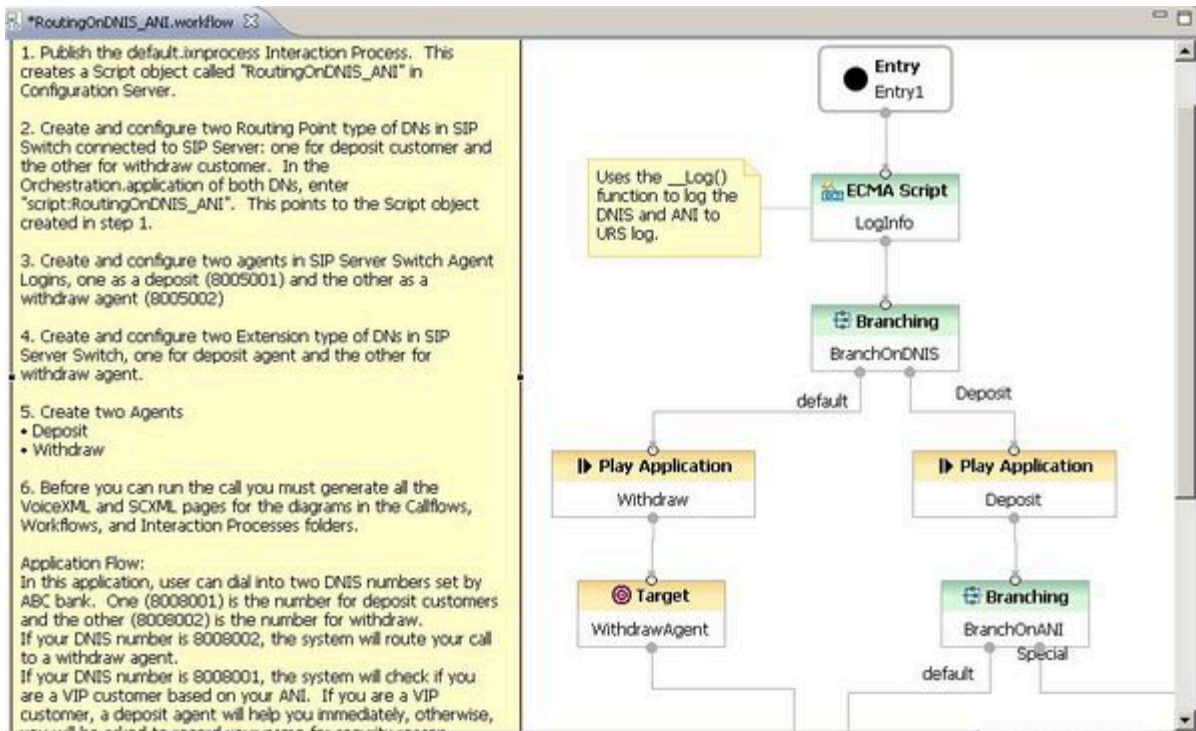
1. Run / launch Eclipse as Administrator.
2. DO NOT keep your workspace under the *Program Files* location as prompted by Composer. Instead specify your workspace location outside of the *Program Files* location, for example,
C:\My Composer 8.1.4 Applications or
C:\Users\<your user>\MyWorkspaceFolder

Viewing a Sample Application

Composer provides a set of predefined Project templates containing sample applications. If using Composer for the first time, before creating your own Project, you may find it helpful to load one or more of the sample Projects. The procedures below lead you through the process of loading a sample applications.

Sample Integrated Voice and Route Application

1. By default, when you enter Composer for the first time, you will be taken inside the Composer perspective.
2. On the toolbar, click the button to create a Java Composer Project.
3. In the **Java Composer Project** dialog box, name your Project and indicate whether you want to use the default location.
4. Select the Project type: **Integrated Voice and Route**, *Voice*, or **Route**. Your selection will determine which Project templates are shown in the next dialog box. For this example, select *Integrated Voice and Route*.
5. Click **Next**. The **Select a Composer Project Template** dialog box opens.
6. Select the **Routing Based on DNIS and ANI** Project template and click **Finish**. A commented *RoutingOnDNISandANI.workflow* diagram appears on the canvas.



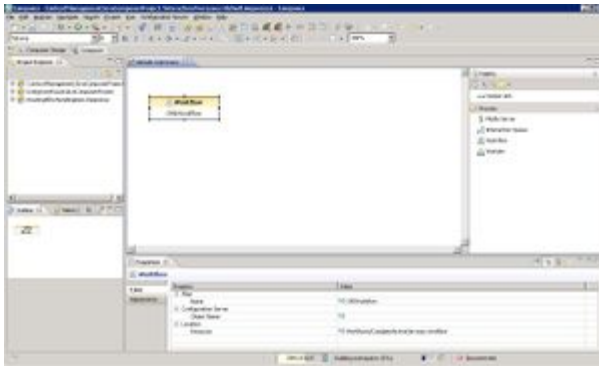
Double-clicking a block opens its **Properties** view so you can view the fields.

The next procedure differs from the above procedure in that it demonstrates how to view a workflow contained within an interaction process diagram.

Viewing a Routing Workflow Inside an Interaction Process Diagram

By default, when you enter Composer for the first time, you will be taken inside the Composer perspective.

1. On the toolbar, click the button to create a Java Composer Project.
2. In the **Java Composer Project** dialog box, name your Project and indicate whether you want to use the default location.
3. Select the Project type: **Integrated Voice and Route** , **Voice** , or **Route** . For this example, select **Route** .
4. Click **Next** . The **Select a Composer Project Template** dialog box opens.
5. Select **Context Services Service Project** click **Finish** . This automatically creates an **interaction process diagram** for voice interactions with a single Workflow block in the *default.ixnprocess* tab.
6. Double-click the Workflow block to open the **Properties** view in the tab underneath.



7. In the **Properties** view, note that the **Resource** property indicates that the name of the workflow is *CompleteActiveServices.workflow* . To view this workflow, expand the Project in the **Package Explorer** on the left.
 8. Expand the **Workflows** folder.
 9. Double-click *CompleteActiveServices.workflow* . A commented workflow appears.
 10. View the properties for each block by double-clicking a block.
- Use the above method to review the various routing Project templates.