



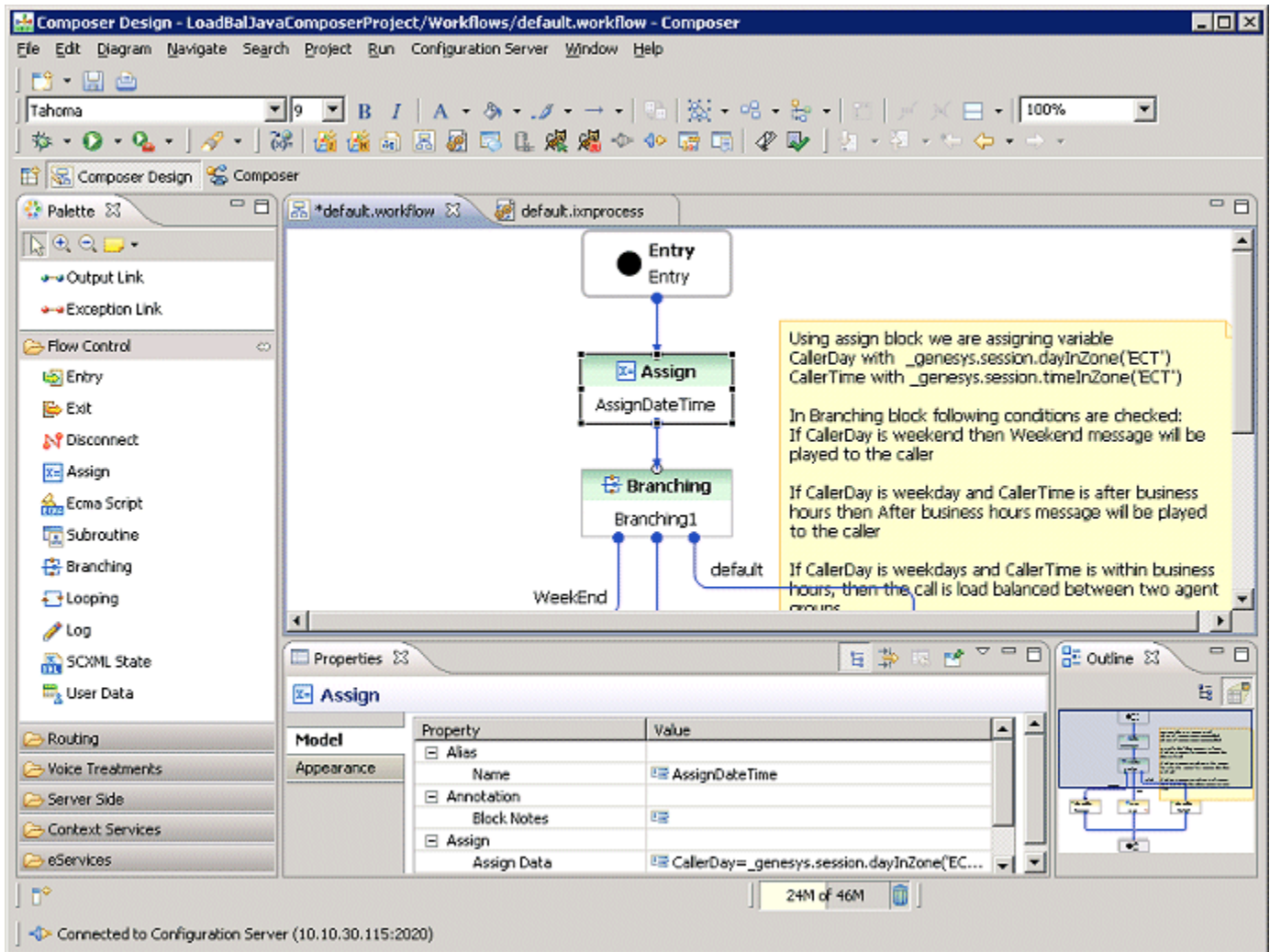
This PDF is generated from authoritative online content, and is provided for convenience only. This PDF cannot be used for legal purposes. For authoritative understanding of what is and is not supported, always use the online content. To copy code samples, always use the online content.

## Composer Help

Workflow Example and Palette

# Workflow Example and Palette

The figure below shows an example routing workflow in Composer Design **perspective**.



As shown above, in Composer Design perspective, the palette of blocks appears on the left. When creating workflows, you drag blocks from palette, drop them in the center canvas area, configure their properties in the lower Properties tab, and connect them.